

15+/- Acres

Vacant Land in Lumberton, MS

Lamar County



\$82,500



DAVID BELDEN ASSOCIATE BROKER, ALC®
O: 601.898.2772 | C: 601.415.3884
DBelden@TomSmithLand.com



ROBERT RITCHIE REALTOR®
O: 601.898.2772 | C: 985.750.2968
RRitchie@TomSmithLand.com

Expect More. Get More.

The Real Estate Experts You Can Trust!



TomSmithLandandHomes.com

Office: 601.898.2772

Property Information

Location:

- S. County Line Road, Lumberton, MS
- Pine Burr Community
- Approximately 720 ft. of Road Frontage on S. County Line Road

Property Use:

- Residential
- Investment
- Recreational
- Private Estate
- Hunting

Coordinates:

- 31.12915, -89.64955

Property Highlights

- 15+/- acres of blank-canvas potential
- Clear cut and ready to be planted again
- A clean slate where you can bring your vision to life while allowing the property to naturally regenerate and flourish.
- Water well and power already on site
- Road access running through the property for added convenience
- Two gated entry points from S. County Line Road

DAVID BELDEN
ASSOCIATE BROKER, ALC®
O: 601.898.2772 | C: 601.415.3884
DBelden@TomSmithLand.com



ROBERT RITCHIE
REALTOR®
O: 601.898.2772 | C: 985.750.2968
RRitchie@TomSmithLand.com

Expect More. Get More.

The Real Estate Experts You Can Trust!

TomSmithLandandHomes.com

Information is believed to be accurate but not guaranteed.



The Property

15+/- Acres

Located in the desirable Pine Burr community of Lamar County, Mississippi, this 15± acre property offers endless possibilities for your next investment, homesite, or country getaway. Recently clear-cut within the past 2-3 years, the property now features healthy natural regrowth, creating an excellent opportunity for replanting timber, developing a private homesite, or establishing a recreational retreat.

With approximately 720 feet of frontage on S. County Line Road, two gated entrances, and an extensive internal road system, the property offers convenient access throughout. Power and a water well are already on site, adding both value and functionality. Whether you envision building your dream home, investing in timberland, creating a hunting property, or simply enjoying a peaceful rural escape, this versatile tract is ready for your vision.



DAVID BELDEN
ASSOCIATE BROKER, ALC®
O: 601.898.2772 | C: 601.415.3884
DBelden@TomSmithLand.com

ROBERT RITCHIE
REALTOR®
O: 601.898.2772 | C: 985.750.2968
RRitchie@TomSmithLand.com

Expect More. Get More.

The Real Estate Experts You Can Trust!



TomSmithLandandHomes.com

Information is believed to be accurate but not guaranteed.

The Property



DAVID BELDEN
ASSOCIATE BROKER, ALC®
O: 601.898.2772 | C: 601.415.3884
DBelden@TomSmithLand.com

ROBERT RITCHIE
REALTOR®
O: 601.898.2772 | C: 985.750.2968
RRitchie@TomSmithLand.com

Expect More. Get More.

The Real Estate Experts You Can Trust!

TomSmithLandandHomes.com

Information is believed to be accurate but not guaranteed.



The Property



- Good Road System
- Power on Site
- Water Well on Site



DAVID BELDEN
ASSOCIATE BROKER, ALC®
O: 601.898.2772 | C: 601.415.3884
DBelden@TomSmithLand.com

ROBERT RITCHIE
REALTOR®
O: 601.898.2772 | C: 985.750.2968
RRitchie@TomSmithLand.com

Expect More. Get More.

The Real Estate Experts You Can Trust!

TomSmithLandandHomes.com

Information is believed to be accurate but not guaranteed.



Additional Photos



DAVID BELDEN
ASSOCIATE BROKER, ALC®
O: 601.898.2772 | C: 601.415.3884
DBelden@TomSmithLand.com

ROBERT RITCHIE
REALTOR®
O: 601.898.2772 | C: 985.750.2968
RRitchie@TomSmithLand.com

Expect More. Get More.

The Real Estate Experts You Can Trust!

TomSmithLandandHomes.com

Information is believed to be accurate but not guaranteed.



Aerial Map



[VIEW INTERACTIVE MAP](#)



DAVID BELDEN
ASSOCIATE BROKER, ALC®
O: 601.898.2772 | C: 601.415.3884
DBelden@TomSmithLand.com



ROBERT RITCHIE
REALTOR®
O: 601.898.2772 | C: 985.750.2968
RRitchie@TomSmithLand.com

Expect More. Get More.

The Real Estate Experts You Can Trust!



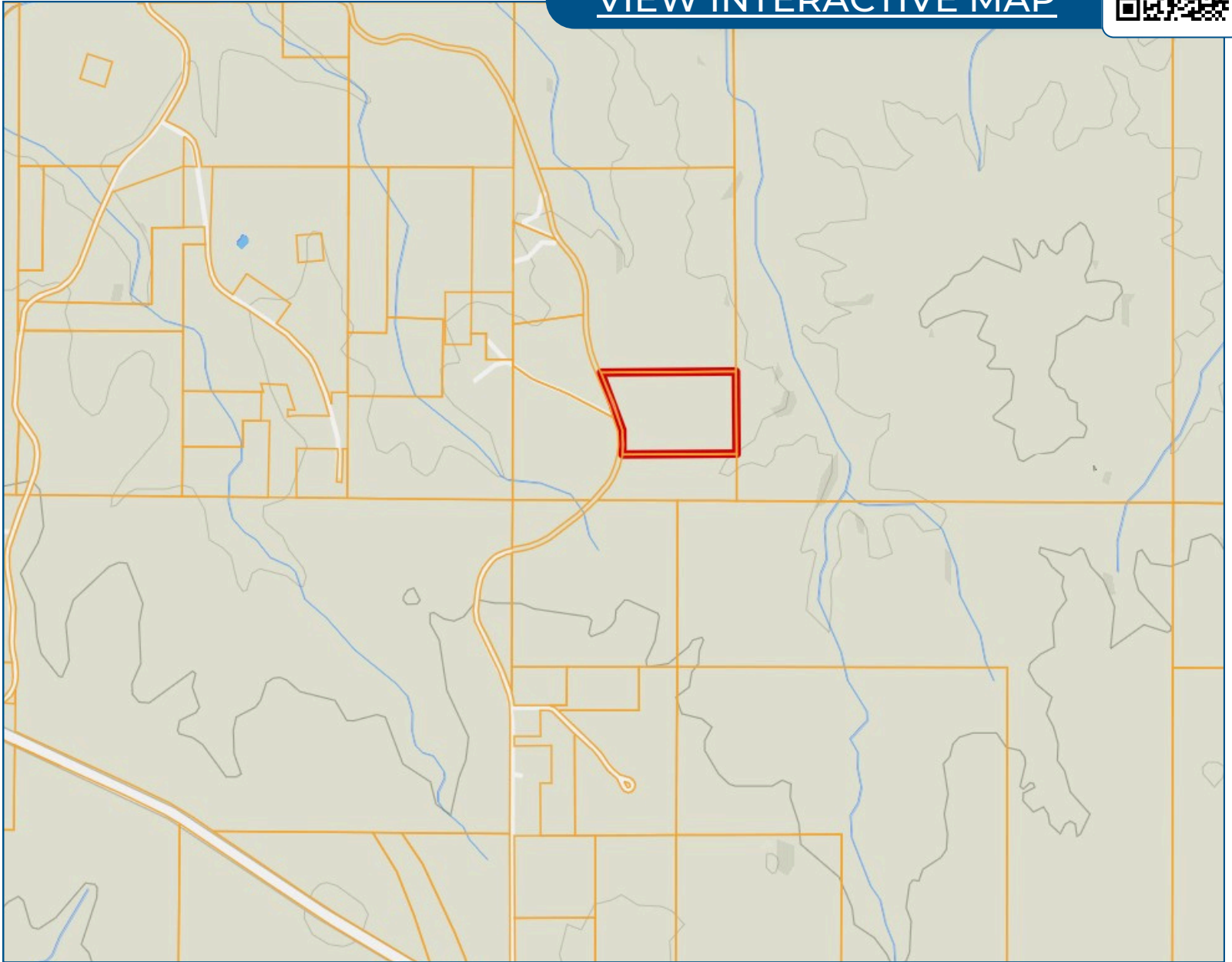
TomSmithLandandHomes.com

Information is believed to be accurate but not guaranteed.

Ownership Map



[VIEW INTERACTIVE MAP](#)



DAVID BELDEN
ASSOCIATE BROKER, ALC®
O: 601.898.2772 | C: 601.415.3884
DBelden@TomSmithLand.com

ROBERT RITCHIE
REALTOR®
O: 601.898.2772 | C: 985.750.2968
RRitchie@TomSmithLand.com

Expect More. Get More.

The Real Estate Experts You Can Trust!



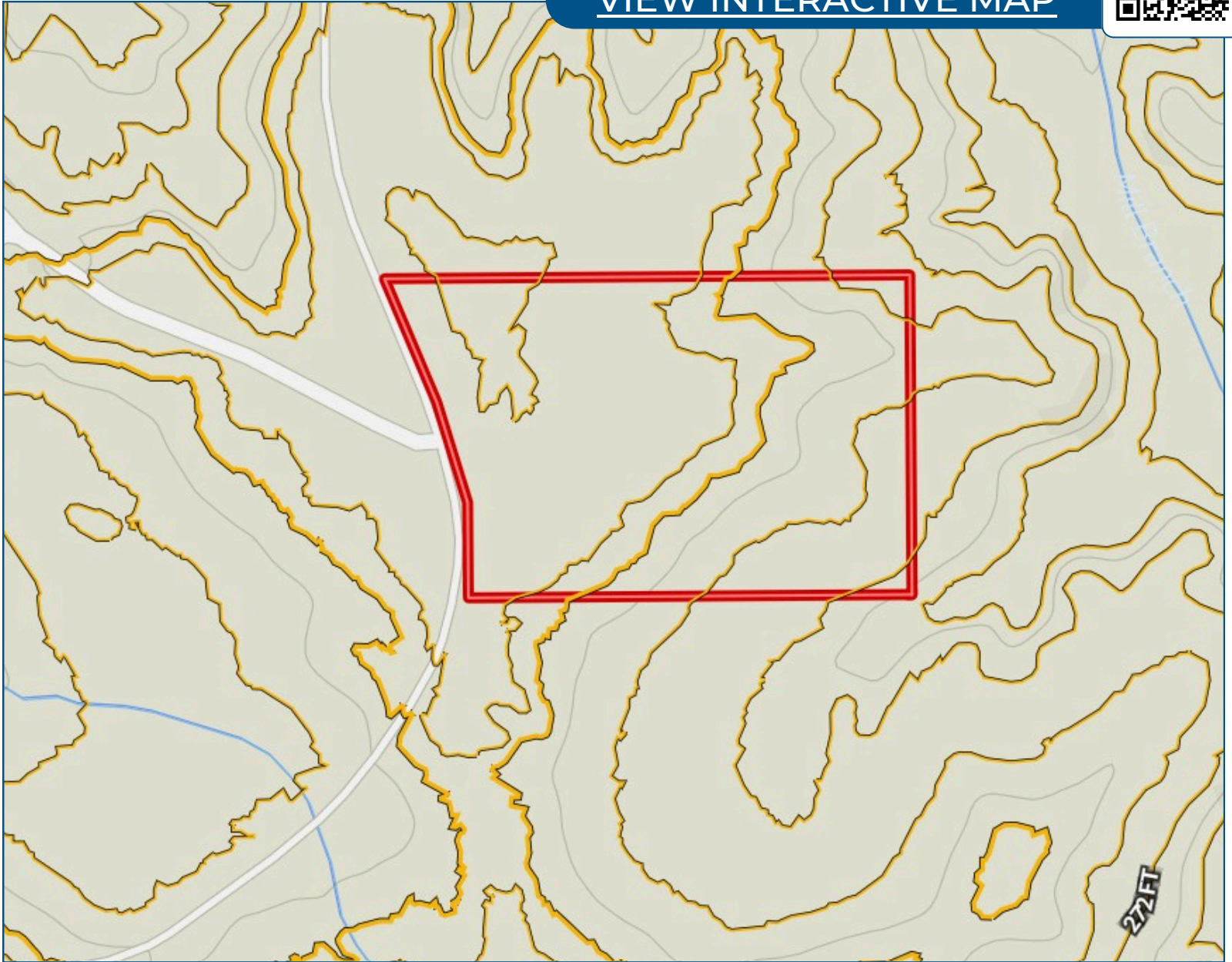
TomSmithLandandHomes.com

Information is believed to be accurate but not guaranteed.

Topo Map



[VIEW INTERACTIVE MAP](#)



DAVID BELDEN
ASSOCIATE BROKER, ALC®
O: 601.898.2772 | C: 601.415.3884
DBelden@TomSmithLand.com

ROBERT RITCHIE
REALTOR®
O: 601.898.2772 | C: 985.750.2968
RRitchie@TomSmithLand.com

Expect More. Get More.

The Real Estate Experts You Can Trust!



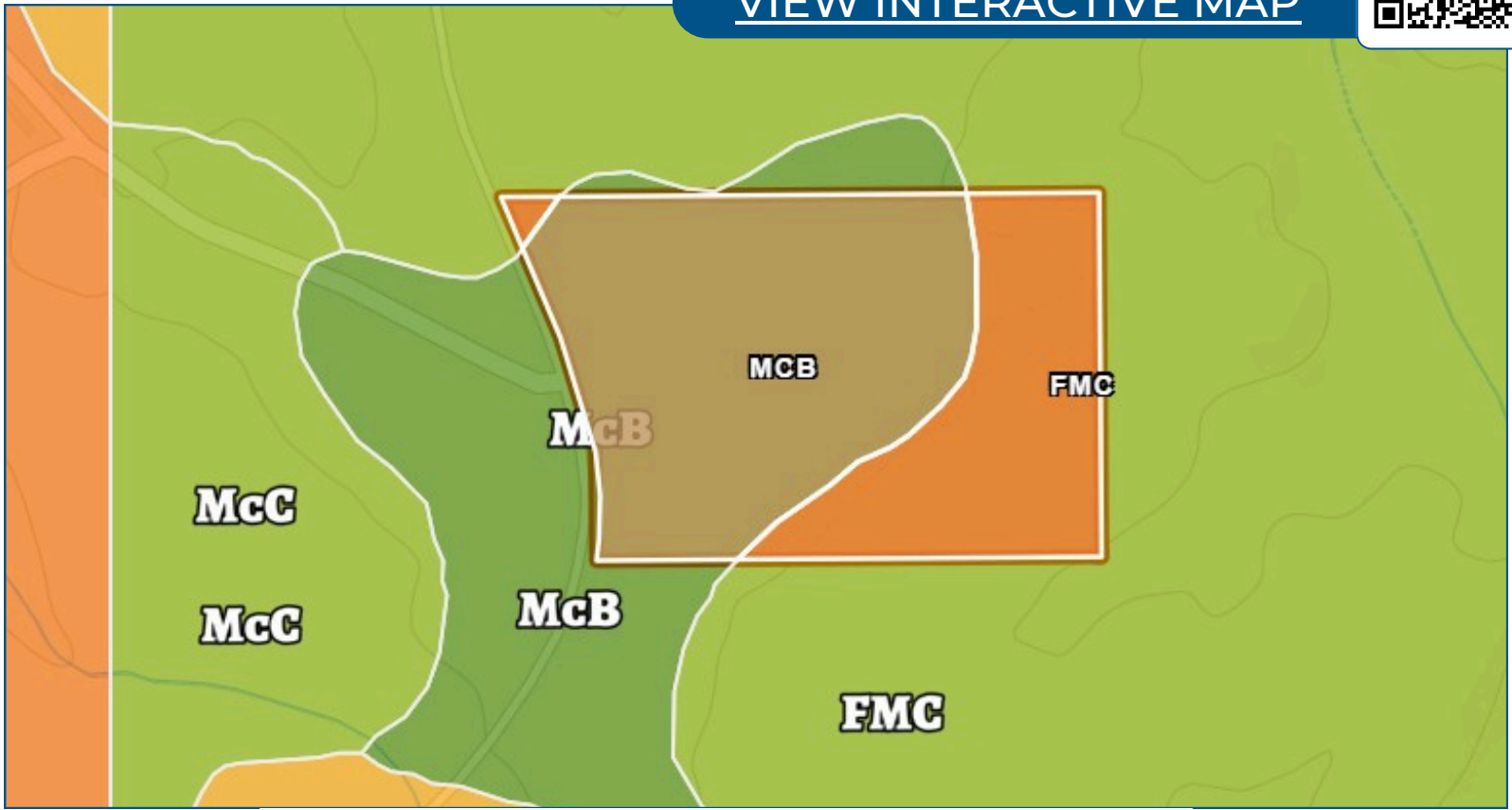
TomSmithLandandHomes.com

Information is believed to be accurate but not guaranteed.

Soil Map



[VIEW INTERACTIVE MAP](#)



McB	McLaurin fine sandy loam, 2 to 5 percent slopes	9.41	64.41%	-	47	2e
FMC	Freestone-McLaurin-Susquehanna association, rolling (frest-mclaurin-susquehanna)	5.20	35.59%	-	51	3e



DAVID BELDEN
ASSOCIATE BROKER, ALC®
O: 601.898.2772 | C: 601.415.3884
DBelden@TomSmithLand.com

ROBERT RITCHIE
REALTOR®
O: 601.898.2772 | C: 985.750.2968
RRitchie@TomSmithLand.com

Expect More. Get More.

The Real Estate Experts You Can Trust!



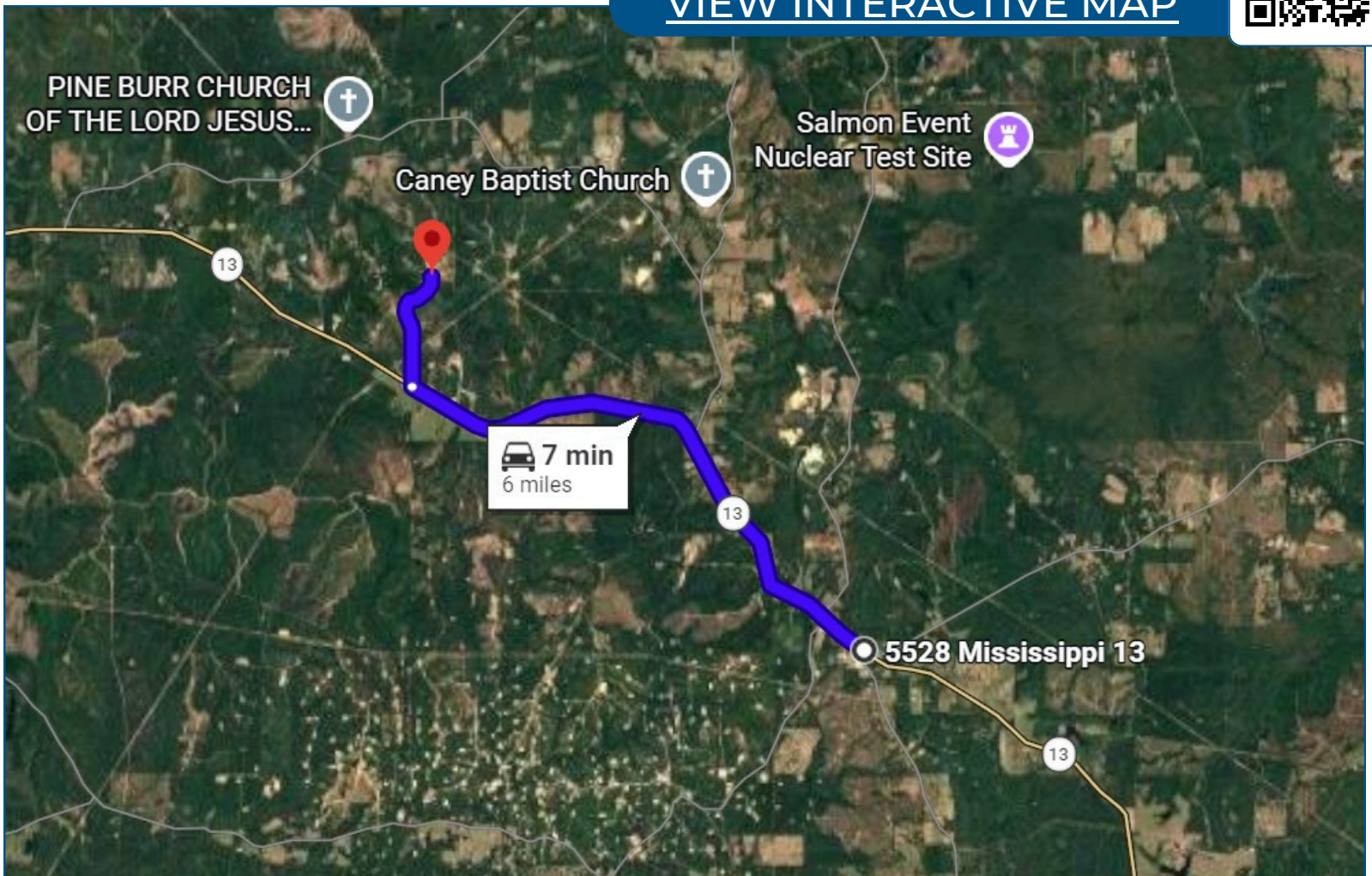
TomSmithLandandHomes.com

Information is believed to be accurate but not guaranteed.

Directional Map



[VIEW INTERACTIVE MAP](#)



From Highway 13 in Baxterville, head west on Highway 13 for 4.8 miles. Then, turn right onto South County Line Road, travel approximately 1 mile, and the destination will be on your right.



DAVID BELDEN
ASSOCIATE BROKER, ALC®
O: 601.898.2772 | C: 601.415.3884
DBelden@TomSmithLand.com

ROBERT RITCHIE
REALTOR®
O: 601.898.2772 | C: 985.750.2968
RRitchie@TomSmithLand.com

Expect More. Get More.

The Real Estate Experts You Can Trust!



TomSmithLandandHomes.com

Information is believed to be accurate but not guaranteed.