

148 West Pinebrook Drive Brandon, MS 39047

3 Bedroom | 2 Bathroom



\$299,000



HALEY BELDEN
REALTOR®

O: 601.898.2772 | C: 601.209.2310
Haley@TomSmithHomes.com



Expect More. Get More.



DAVID BELDEN
REALTOR®

O: 601.898.2772 | C: 601.415.3884
DBelden@TomSmithLand.com

TomSmithLandandHomes.com

Information is believed to be accurate but not guaranteed.



Property Information

Location:

- 148 W Pinebrook Drive, Brandon, MS, 39047-7818
- Pinebrook Subdivision

Property Use:

- Residential

Coordinates:

- 32.37445, -90.03195

Property Highlights

- 0.15± Acres
- 1,559± square feet, 3 Bedrooms, 2 Bathrooms
- Split-Plan Home
- Office Nook with Built-Ins
- Fresh Paint
- Updated Flooring
- New Hot Water Heater
- New Gutters
- Situated on a Quiet Cul-de-Sac
- Convenient Location
- Zoned for Northwest Rankin School District



HALEY BELDEN
REALTOR®

O: 601.898.2772 | C: 601.209.2310
Haley@TomSmithHomes.com



DAVID BELDEN
REALTOR®

O: 601.898.2772 | C: 601.415.3884
DBelden@TomSmithLand.com

The Residence

1,559± Sq Ft

Welcome to 148 W Pinebrook Drive in the desirable Pinebrook West neighborhood of Brandon! This well-maintained 3-bedroom, 2-bath split-plan home offers 1,559± square feet of comfortable living space and a functional layout perfect for everyday living and entertaining. Step inside to a formal entry that opens into a spacious formal dining room. The large kitchen features abundant cabinet and counter space, stainless steel appliances, a breakfast bar, and a cozy breakfast area. Just off the garage entry, you'll find a convenient office nook complete with built-ins.

The primary suite offers plenty of room to relax and unwind, with an en-suite bath featuring double vanities, a whirlpool tub, separate shower, and a walk-in closet. Two guest bedrooms are located on the opposite side of the home and share a full bath. Recent updates include fresh paint, updated flooring, a new hot water heater, and added gutters. Enjoy outdoor living on the covered patio overlooking a low-maintenance backyard. Situated on a quiet cul-de-sac, this home offers both privacy and convenience. Located just minutes from the Ross Barnett Reservoir and the Dogwood Festival Market area, you'll have quick access to dining, shopping, and recreation. Zoned for the highly sought-after Northwest Rankin School District, this home is a must-see!



HALEY BELDEN
REALTOR®

O: 601.898.2772 | C: 601.209.2310
Haley@TomSmithHomes.com



DAVID BELDEN
REALTOR®

O: 601.898.2772 | C: 601.415.3884
DBelden@TomSmithLand.com

The Residence



HALEY BELDEN
REALTOR®

O: 601.898.2772 | C: 601.209.2310
Haley@TomSmithHomes.com



DAVID BELDEN
REALTOR®

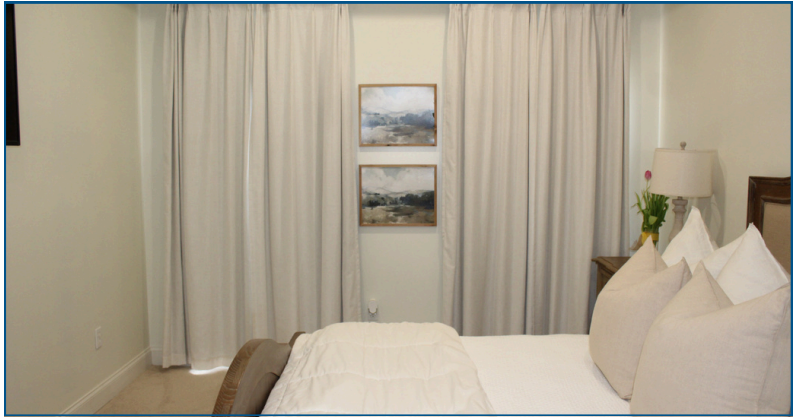
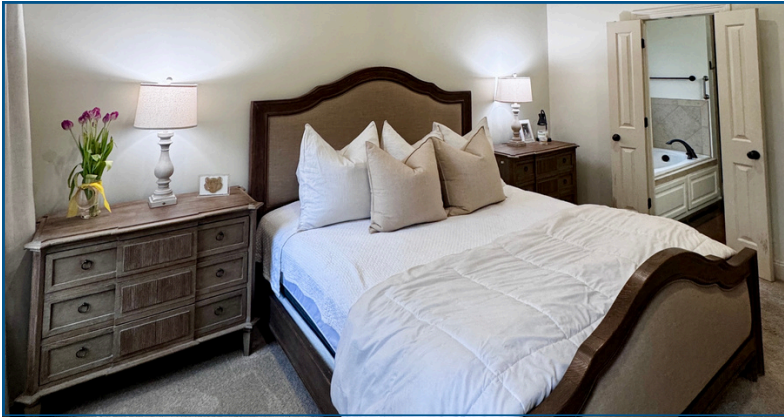
O: 601.898.2772 | C: 601.415.3884
DBelden@TomSmithLand.com

TomSmithLandandHomes.com

Information is believed to be accurate but not guaranteed.



The Residence



HALEY BELDEN
REALTOR®

O: 601.898.2772 | C: 601.209.2310
Haley@TomSmithHomes.com



DAVID BELDEN
REALTOR®

O: 601.898.2772 | C: 601.415.3884
DBelden@TomSmithLand.com

TomSmithLandandHomes.com

Information is believed to be accurate but not guaranteed.



Aerial Map

[VIEW INTERACTIVE MAP](#)



HALEY BELDEN
REALTOR®

O: 601.898.2772 | C: 601.209.2310
Haley@TomSmithHomes.com

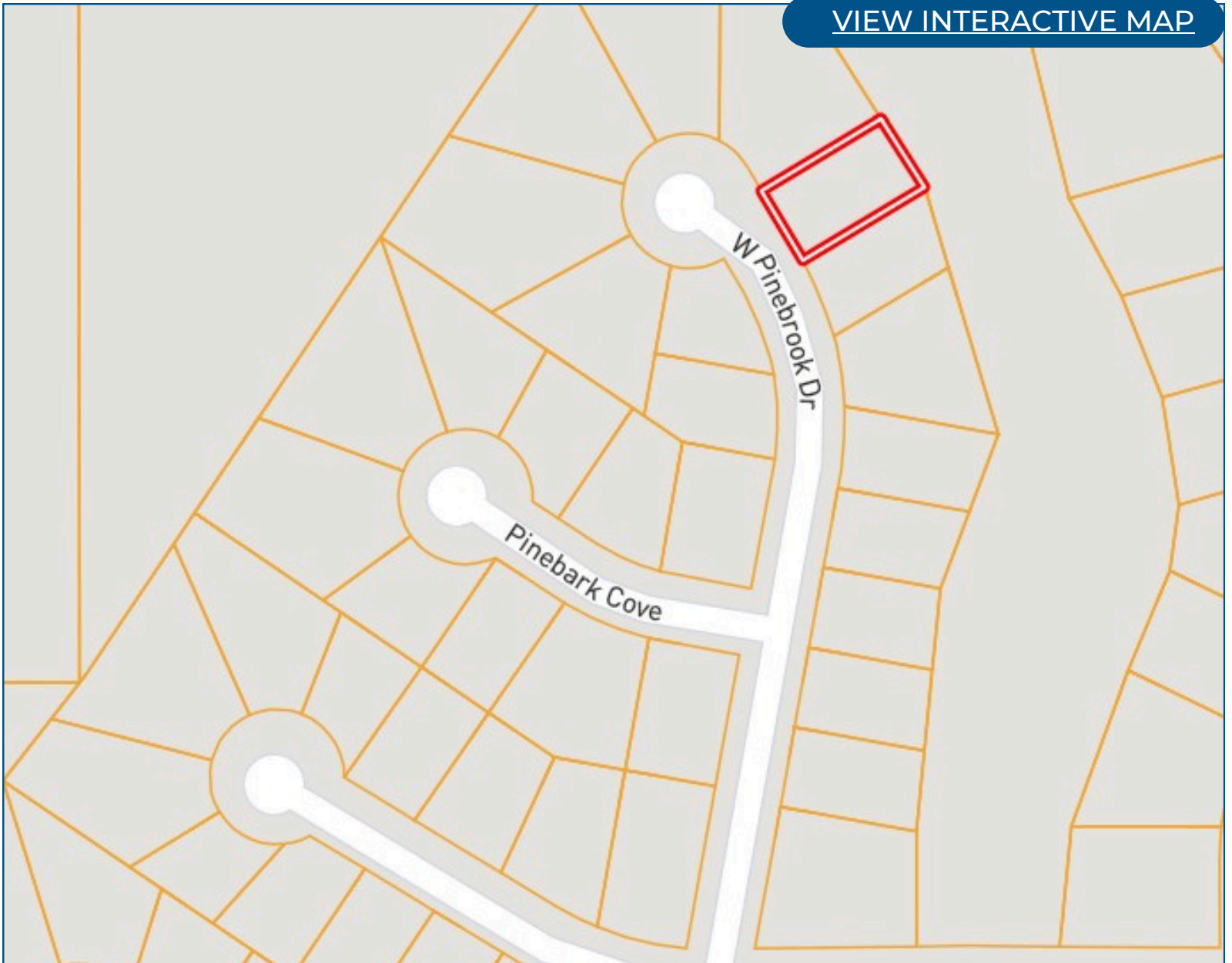


DAVID BELDEN
REALTOR®

O: 601.898.2772 | C: 601.415.3884
DBelden@TomSmithLand.com

Ownership Map

[VIEW INTERACTIVE MAP](#)



HALEY BELDEN
REALTOR®

O: 601.898.2772 | C: 601.209.2310
Haley@TomSmithHomes.com



DAVID BELDEN
REALTOR®

O: 601.898.2772 | C: 601.415.3884
DBelden@TomSmithLand.com

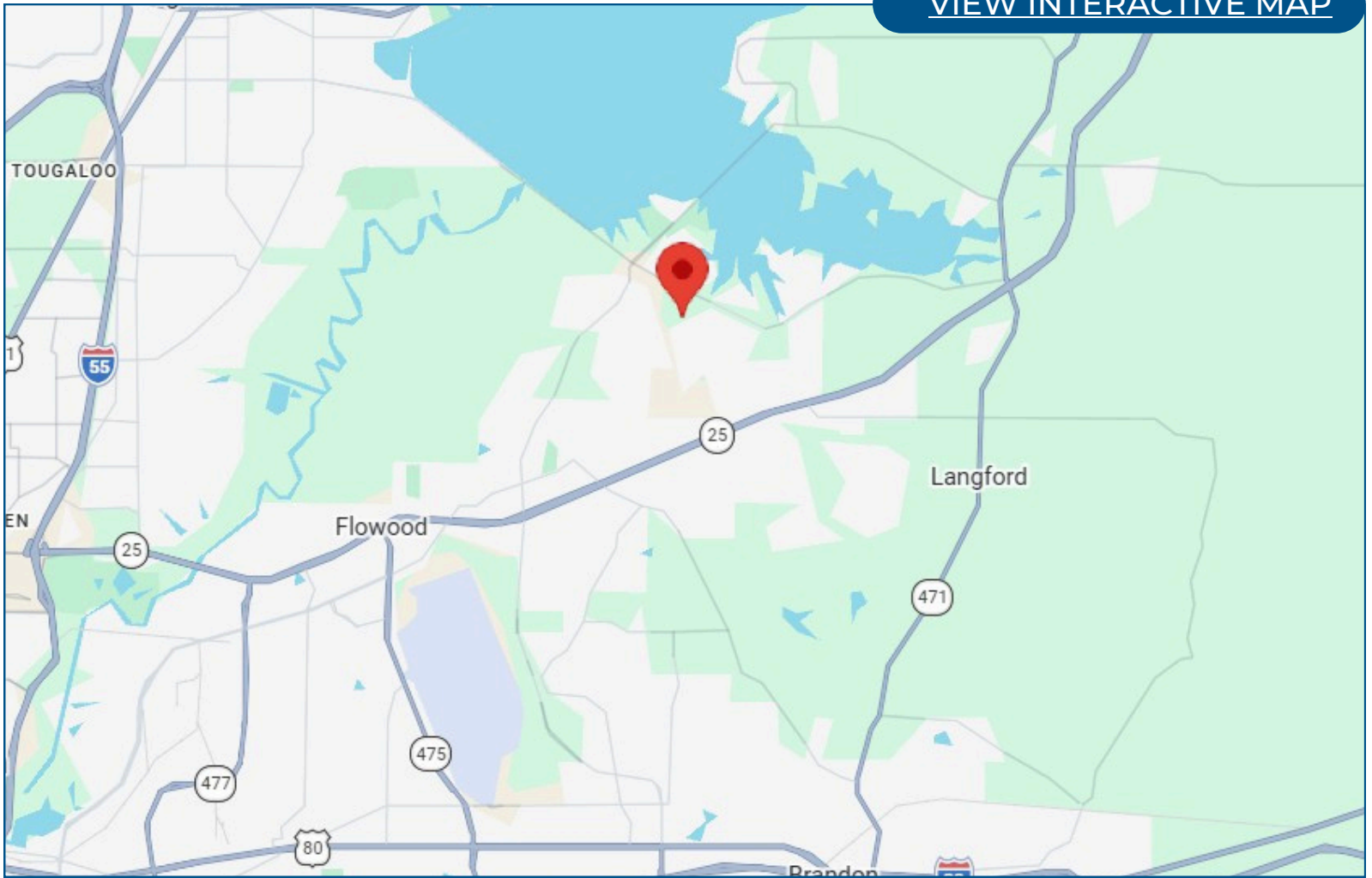
TomSmithLandandHomes.com

Information is believed to be accurate but not guaranteed.



Directional Map

[VIEW INTERACTIVE MAP](#)



Directions from Highway 25/Lakeland Drive: From Highway 25 (Lakeland Drive), turn onto Hugh Ward Boulevard. Continue straight, then turn into the Pinebrook subdivision. Follow the main road to W Pinebrook Drive—148 W Pinebrook Drive will be on your left.



HALEY BELDEN
REALTOR®

O: 601.898.2772 | C: 601.209.2310
Haley@TomSmithHomes.com



DAVID BELDEN
REALTOR®

O: 601.898.2772 | C: 601.415.3884
DBelden@TomSmithLand.com

TomSmithLandandHomes.com

Information is believed to be accurate but not guaranteed.

