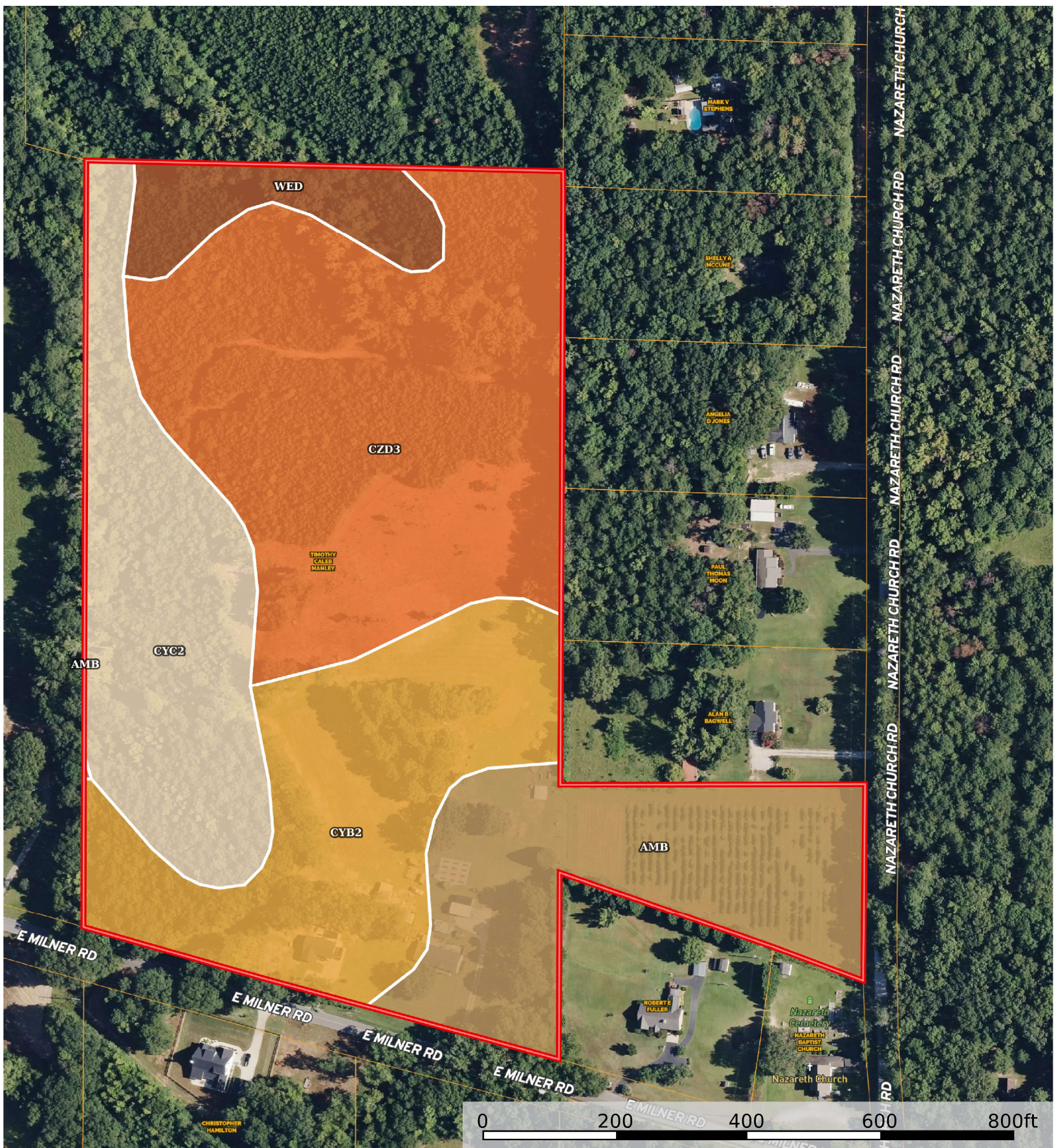


351 E Milner Rd- Exhibit 'A'

Georgia, 22.86 AC +/-



Boundary

Boundary 23.02 ac

SOIL CODE	SOIL DESCRIPTION	ACRES	%	CPI	NCCPI	CAP
CZD3	Cecil sandy clay loam, 6 to 15 percent slopes, severely eroded	8.33	36.2	0	59	4e
CYB2	Cecil sandy loam, 2 to 6 percent slopes, moderately eroded	5	21.73	0	70	2e
CYC2	Cecil sandy loam, 6 to 10 percent slopes, moderately eroded	4.25	18.47	0	69	3e
AmB	Appling sandy loam, 2 to 6 percent slopes	4.21	18.3	0	75	2e
Wed	Wehadkee soils, 0 to 2 percent slopes, frequently flooded	1.23	5.35	0	53	6w
TOTALS		23.02(*)	100%	-	65.87	3.12

(*) Total acres may differ in the second decimal compared to the sum of each acreage soil. This is due to a round error because we only show the acres of each soil with two decimal.

Capability Legend

Increased Limitations and Hazards

Decreased Adaptability and Freedom of Choice Users

Land, Capability

	1	2	3	4	5	6	7	8
'Wild Life'	•	•	•	•	•	•	•	•
Forestry	•	•	•	•	•	•	•	
Limited	•	•	•	•	•	•	•	
Moderate	•	•	•	•	•	•		
Intense	•	•	•	•	•			
Limited	•	•	•	•				
Moderate	•	•	•					
Intense	•	•						
Very Intense	•							

Grazing Cultivation

(c) climatic limitations (e) susceptibility to erosion

(s) soil limitations within the rooting zone (w) excess of water