

# BROOKSVILLE COMMERCIAL LAND



0 Cortez Blvd | 3.82 Acres | PDP(GC) Zoning

Listed By

**Robert Buckner**  
352-238-6930  
robert@bucknerrealestate.com

**Charles Buckner**  
352-848-5545  
charles@bucknerrealestate.com

**Buckner**  
REAL ESTATE, INC.  
11 N Main St, Brooksville, FL 34601

## Property Summary

Exceptional opportunity to acquire 3.82± acres of commercial land with approximately 300 feet of frontage along Cortez Blvd, one of Brooksville's busiest commercial corridors. The property is positioned directly across from a Publix-anchored shopping plaza and is just west of the signalized intersection at Cortez Blvd and US-41 (Broad Street), offering excellent visibility, access, and exposure.

The site benefits from strong traffic counts of approximately 16,700 vehicles per day and is surrounded by established national retailers including Publix, Walmart, Lowe's, and Winn-Dixie. Continued residential growth and major infill development in the surrounding area further enhance long-term demand and investment potential. Zoned City of Brooksville PDP (General Commercial), the property allows for a wide range of commercial uses. Parcel Key #778484.

## Highlights

- 16,700 vehicles pass each day on Cortez Blvd
- Located directly across the street from Publix in the Brooksville Square Plaza
- City Water and Sewer are available nearby, more details to come

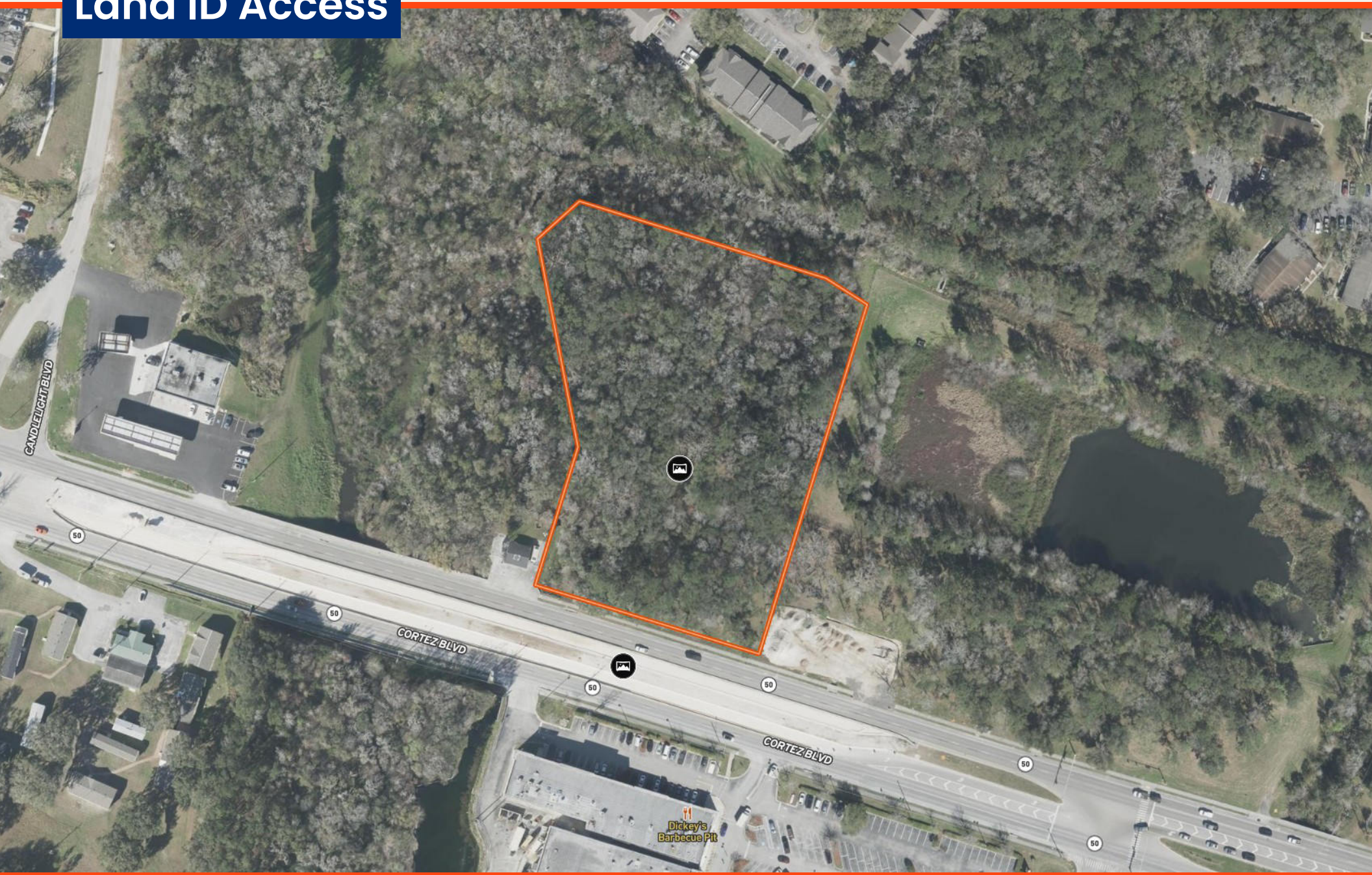
## Location Information

|                  |                       |
|------------------|-----------------------|
| Site Address     | 0 Cortez Blvd         |
| City, State, Zip | Brooksville, FL 34601 |
| County           | Hernando              |

## Property Information

|                      |   |
|----------------------|---|
| Size +/- (Acres, SF) | 3.82 Acres or 166,555 SF                          |
| Parcel Key #         | 778484  |
| Zoning               | PDP(GC) General Commercial                        |
| DOR Use Code         | (10) Vacant Commercial                            |
| Utilities            | 12" Water and 16" Sewer Main Connections Possible |
| Frontage             | 300 FT  |
| Traffic Counts       | 16,700 AADT on Cortez Blvd                        |
| Taxes (2025)         | \$9,662.83  |
| Price                | <b>\$575,000</b>                                  |

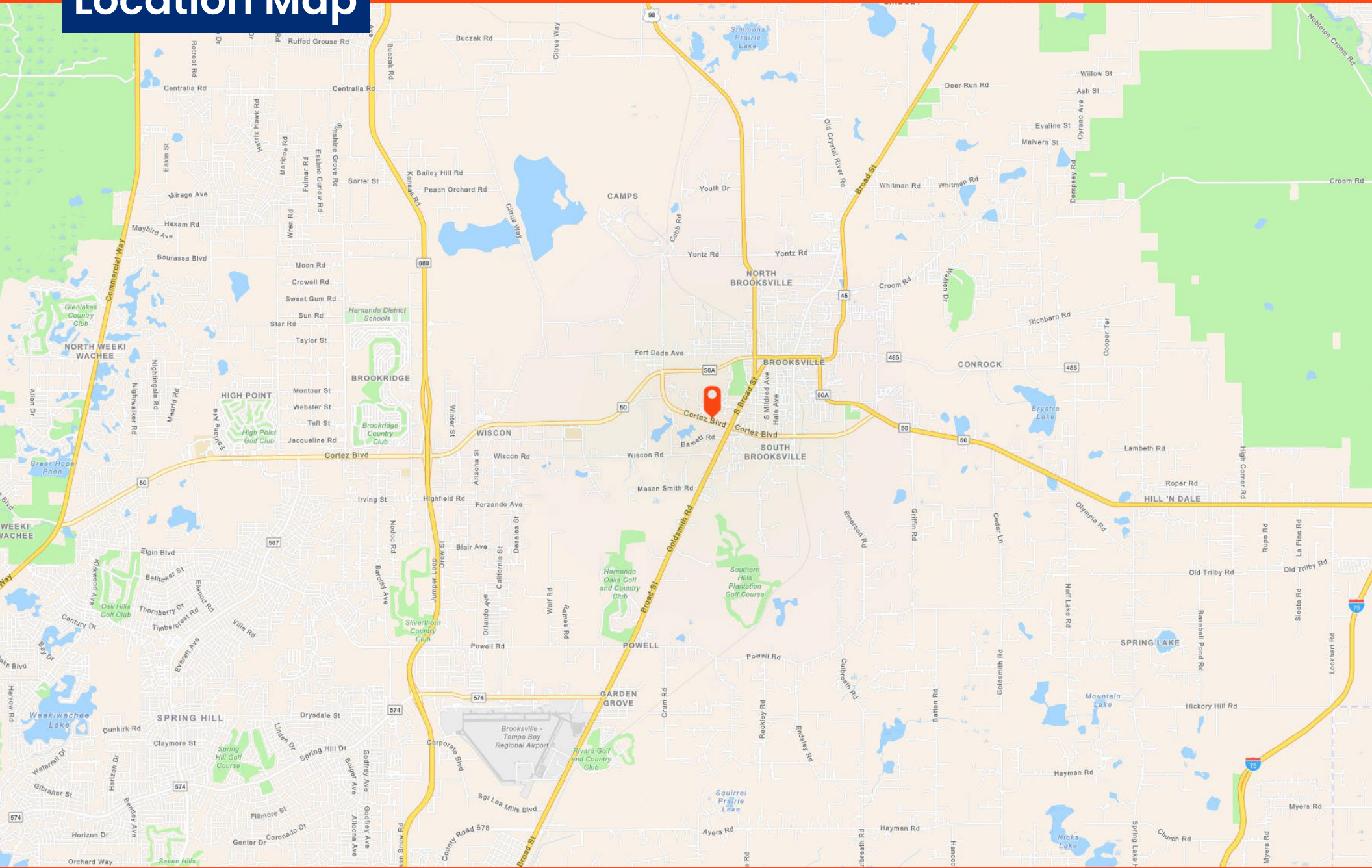
# Land ID Access



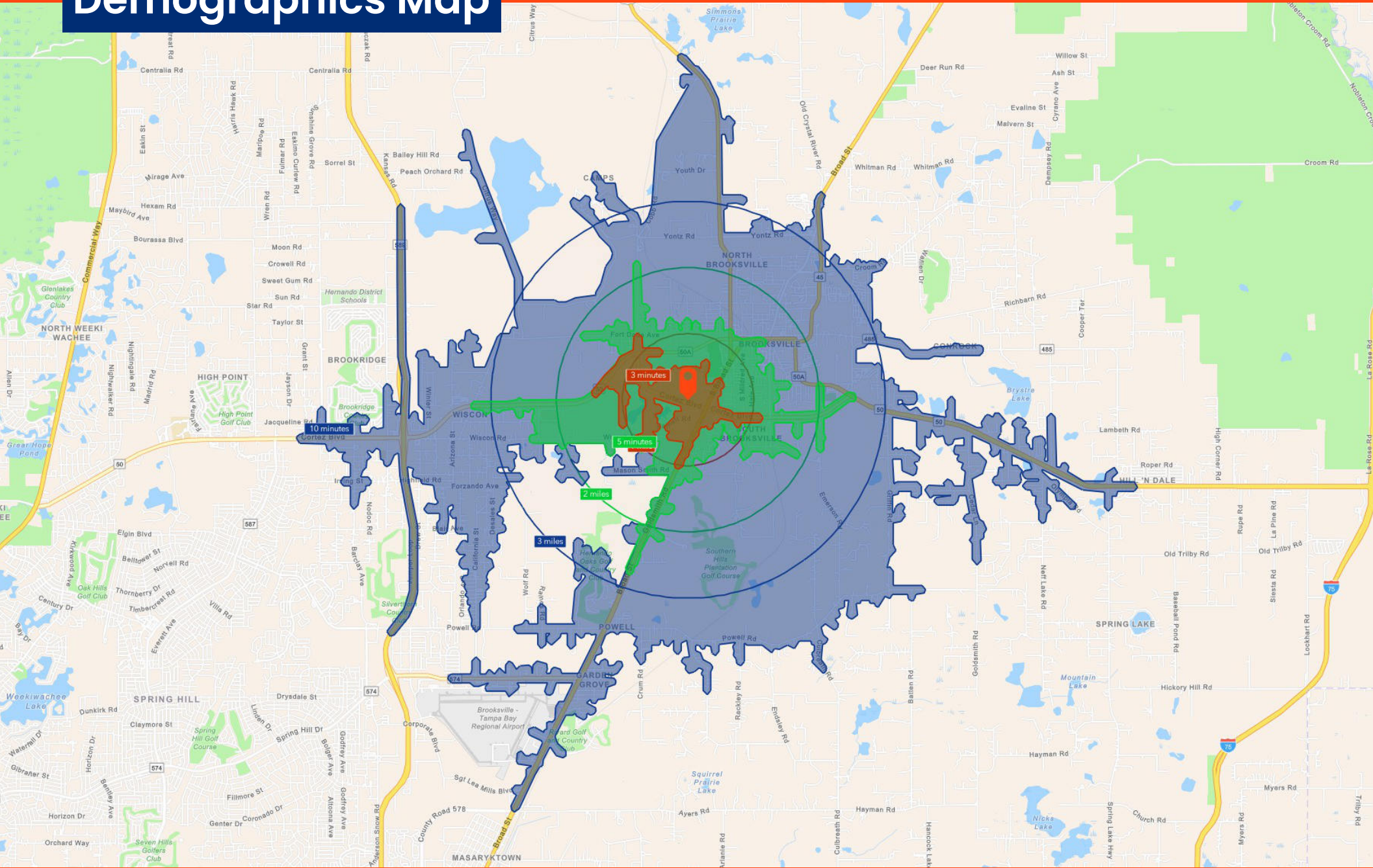
View the map [here](#)



# Location Map



# Demographics Map



| Drive Time               | 3 Minutes | 5 Minutes | 10 Minutes | 1 Miles  | 2 Miles  | 3 Miles  | Hernando | Florida    |
|--------------------------|-----------|-----------|------------|----------|----------|----------|----------|------------|
| <b>Population Data</b>   |           |           |            |          |          |          |          |            |
| Total Population         | 1,669     | 5,528     | 19,220     | 3,492    | 8,945    | 14,705   | 209,837  | 23,027,836 |
| Households               | 926       | 2,417     | 8,054      | 1,628    | 3,910    | 6,581    | 86,963   | 9,263,074  |
| Average Household Size   | 1.73      | 2.21      | 2.21       | 2.07     | 2.22     | 2.18     | 2.39     | 2.43       |
| Owner Occupied Housing   | 453       | 1,251     | 5,693      | 817      | 2,223    | 4,447    | 71,114   | 6,222,143  |
| Renter Occupied Housing  | 473       | 1,166     | 2,361      | 811      | 1,687    | 2,134    | 15,849   | 3,040,931  |
| Median Age               | 44.8      | 41.8      | 47.8       | 43       | 42.4     | 48.1     | 49.5     | 43.6       |
| <b>Income Data</b>       |           |           |            |          |          |          |          |            |
| Median Household Income  | \$46,180  | \$46,527  | \$56,050   | \$46,407 | \$49,894 | \$54,013 | \$68,105 | \$78,205   |
| Average Household Income | \$69,068  | \$65,556  | \$77,065   | \$66,739 | \$66,870 | \$73,109 | \$85,601 | \$111,382  |
| Per Capita Income        | \$34,780  | \$29,380  | \$32,458   | \$31,480 | \$29,214 | \$32,568 | \$35,511 | \$44,891   |
| <b>Business Data</b>     |           |           |            |          |          |          |          |            |
| Total Businesses         | 206       | 527       | 1,317      | 370      | 870      | 1,060    | 6,023    | 1,009,114  |
| Total Employees          | 2,030     | 5,270     | 15,054     | 3,590    | 9,110    | 11,735   | 56,389   | 9,333,811  |

**Key Highlights:**

- Population of 19,220 people within a 10-minute drive
- Per Capita Income within a 3-minute drive is \$34,780

# Neighborhood Trade



**Publix**  
DICKEY'S BARBECUE PIT  
ANYTIME FITNESS  
Quest Diagnostics

**WAL★MART**  
SUPERCENTER  
**LOWE'S**

**Winn-Dixie**  
bealls  
OUTLET  
Auto Zone  
Hungry Howies  
T-Mobile  
ups

**DOLLAR TREE**  
SUBWAY  
BUDDY'S HOME FURNISHINGS  
Little Caesars  
AMSCOT  
metro by T-Mobile  
boost mobile  
BANK OF AMERICA

**7-ELEVEN**  
Starbucks  
Wendy's

**DQ**  
Tires Plus  
Culver's  
KFC  
CHARLEYS  
DD

**Wawa** **IHOP**  
CVS pharmacy  
BURGER KING  
EXPRESS OIL CHANGE

**HARBOR FREIGHT**  
QUALITY TOOLS LOWEST PRICES  
Walgreens  
OLLIE'S  
GOOD STUFF CHEAP  
EP+C HEALTH & FITNESS  
save a lot  
Applebee's GRILL + BAR

# Trade Area Map



## Water and Sewer Lines

12" Water distribution line, north side of Cortez Blvd in the ROW

16" Gravity sewer main in the westbound travel lanes of SR 50

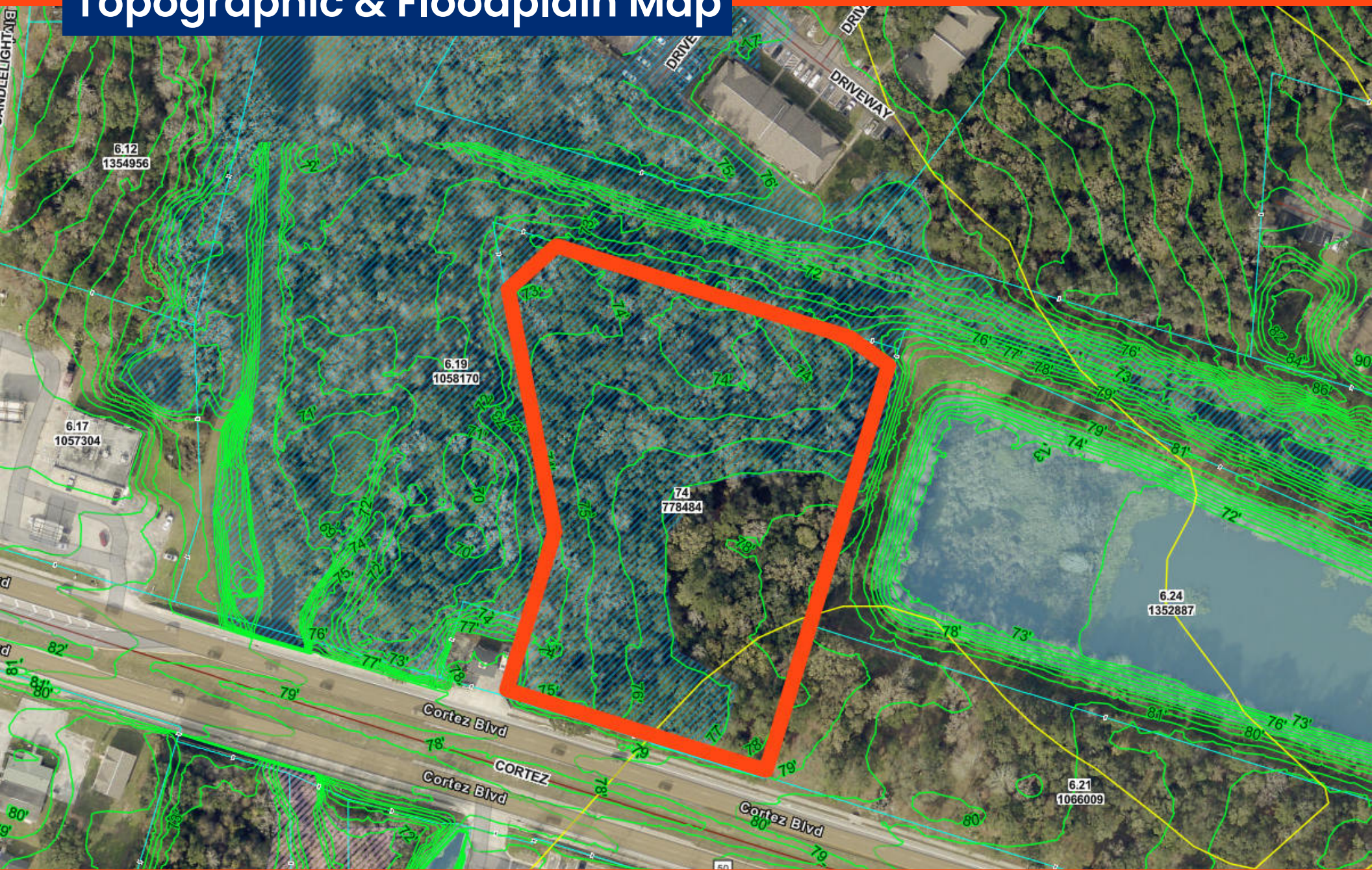
\*Map provided by City of Brooksville



# Property Aerial



# Topographic & Floodplain Map



# SWFWMD Map



# Soils Report



 Boundary

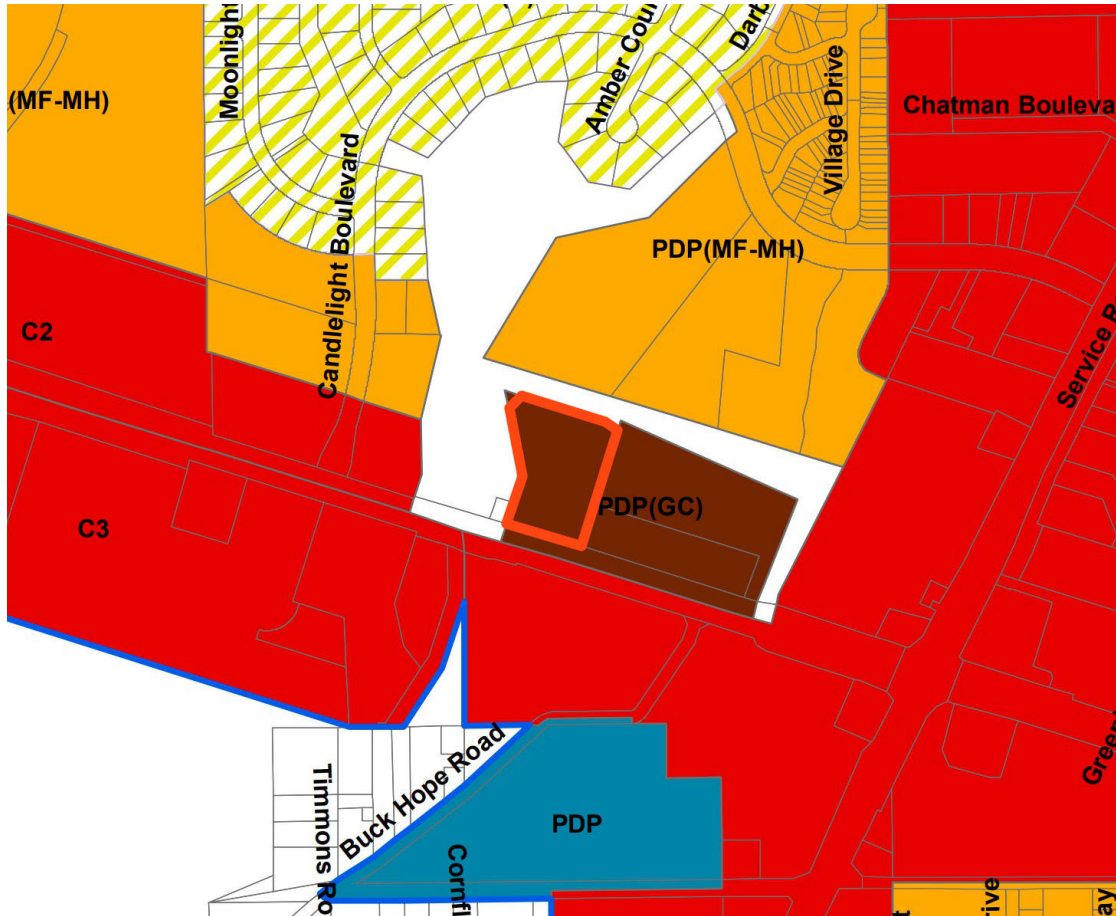
 The information contained herein was obtained from sources deemed to be reliable. Land id™ Services makes no warranties or guarantees as to the completeness or accuracy thereof.

 Boundary 3.84 ac

| SOIL CODE | SOIL DESCRIPTION                                  | ACRES   | %     | CPI | NCCPI | CAP  |
|-----------|---|---------|-------|-----|-------|------|
| 21        | Flemington fine sandy loam, 2 to 5 percent slopes | 2.1     | 54.83 | 0   | 45    | 3w   |
| 34        | Micanopy loamy fine sand, 2 to 5 percent slopes   | 1.74    | 45.43 | 0   | 49    | 2w   |
| TOTALS    |   | 3.84(*) | 100%  | -   | 46.93 | 2.55 |

(\*) Total acres may differ in the second decimal compared to the sum of each acreage soil. This is due to a round error because we only show the acres of each soil with two decimal.

# Zoning Classification







## Zoning Information

PDP(GC) zoning in the City of Brooksville.

View Brooksville Zoning Municode library here - [https://library.municode.com/fl/brooksville/codes/code\\_of\\_ordinances?nodeId=SPBLADECO\\_ART11ZODIUSLOR](https://library.municode.com/fl/brooksville/codes/code_of_ordinances?nodeId=SPBLADECO_ART11ZODIUSLOR)

## Zoning Key

-  PDP General Commercial
-  PDP
-  Commercial C2 or C3
-  PDP Multifamily





## Robert Buckner

Broker/Owner

robert@bucknerrealestate.com

Office: 352 796 4544 | Cell: 352 238 6930

### About & Experience

Robert has been the broker-owner of Buckner Real Estate since 1987. He is the sixth generation of his family to reside in Hernando County, Florida. Over 35 years of experience and integrity in all aspects of real estate brokerage, and he established a company that endeavors to provide superlative professional service, advice and assistance to clients. Robert is an avid golfer, hunter and Florida Gator fan.

### Education & REALTOR® Involvement & Awards

- Attended the University of Florida and graduated from St. Leo University Cum Laude with a BA degree in Business Administration
- Member of National Association of REALTORS®, Hernando County Association of REALTORS® and past District Vice-President of the Florida Realtors®
- 1989 President of Hernando County Association of REALTORS®, 2012 Realtor of the Year Award and 2-time recipient of the Civic Achievement Award
- Numerous courses in commercial real estate investment and appraisal technique

### Current Board Involvement

- 2022-2024 President of Gator Boosters, Inc.
- Hernando Progress, Inc.
- Brooksville Vision Foundation, Inc.
- Hernando County Business Alliance

**Buckner Real Estate, Inc.**

11 N Main Street  
Brooksville, FL 34601



## Charles Buckner

Senior Associate

[charles@bucknerrealestate.com](mailto:charles@bucknerrealestate.com)

Office: 352 796 4544 | Cell: 352 848 5545

### About & Experience

Charles marks the seventh generation of his family to live in Hernando County. From having grown up right here in Brooksville, he credits his first real estate interests stemming from the time spent with his father, Robert Buckner, hunting and picking oranges on the local land from a young age. Charles went on to earn his real estate degree from the University of Central Florida and his Master's in Real Estate from the University of Florida. He has since moved back to Brooksville and utilized much of what he learned to spearhead the brokerage's new look and features that are seen in use today. Charles is a devoted gym-goer and greatly enjoys the aquarium hobby.

### Education

- BSBA in Real Estate, University of Central Florida
- Master of Science in Real Estate, University of Florida

### Community Involvement

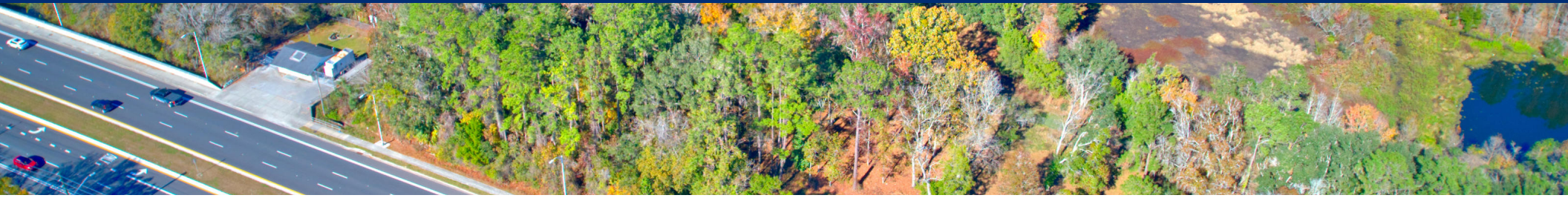
- Board Member, Brooksville Main Street, Inc.
- Board Member, The Ederington Foundation
- Kiwanis Club of Brooksville
- Leadership Hernando Class of 2024
- Member, Hernando County Chapter of the Coastal Conservation Association

### Focus Areas

- Land Brokerage
- Commercial Brokerage and Leasing

**Buckner Real Estate, Inc.**

11 N Main Street  
Brooksville, FL 34601



**Buckner Real Estate, Inc.**

11 N Main Street

Brooksville, FL 34601

[BucknerRealEstate.com](http://BucknerRealEstate.com)

**Confidentiality & Disclaimer**

Buckner Real Estate, Inc. aims to provide accurate information that is garnered from sources we deem as reliable for this property. We do not guarantee this accuracy. Buyers should rely on their own research.