

Prime Investment Opportunity

Bolivar County

233 North Street, Cleveland, MS 38732



\$275,000



Expect More. Get More.

Property Information

Location:

- 233 North Street
Cleveland, MS 38732

Coordinates:

- 33.7446, -90.71645

Property Use:

- Investment Opportunity
- Retail
- Office

Property Highlights

- 0.13± Acres
- 1,746± Sq Ft
- Two Separate Units Under One Roof
- New Central A/C Unit
- Updated Water Heaters
- Updated Flooring & Exterior Paint



Expect More. Get More.

**BRUCE
WEST**

MANAGING BROKER, ALC®

Office: 662.771.1101

Cell: 662.873.3007

Bruce@TomSmithLand.com

**A Real Estate Expert
You Can Trust!**



Commercial Property

Located in Cleveland, MS, this 1,746± sq. ft. mixed-use commercial property offers a prime investment opportunity in a vibrant college town filled with year-round festivals and events. Featuring two separate units under one roof, the building is 100% occupied with reliable tenants on Triple Net Leases, ensuring steady income. Positioned just off Highway 61 near the central downtown area, the property benefits from high visibility and strong traffic counts. Recently upgraded and well-cared-for, the property features a new central A/C unit, updated water heaters, bathroom, flooring, and fresh exterior paint. This property delivers excellent ROI potential for investors.



**BRUCE
WEST**
REALTOR®

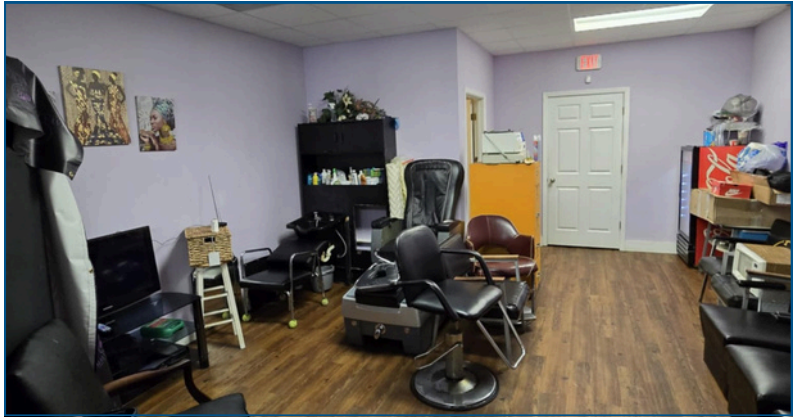
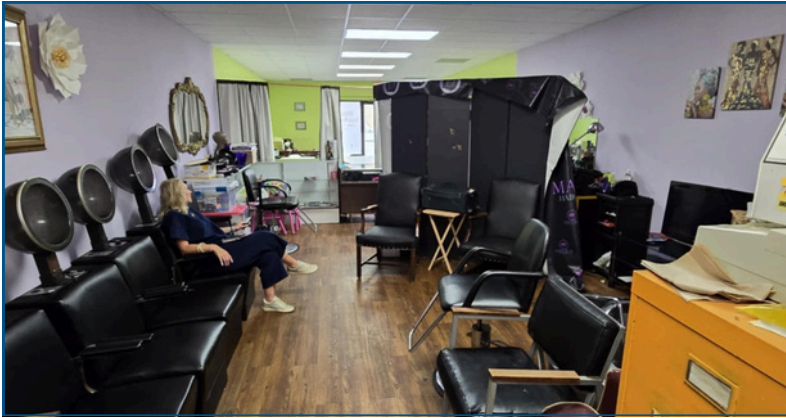
Office: 662.771.1101
Cell: 662.873.3007

Bruce@TomSmithLand.com



Expect More. Get More.

Commercial Property



**BRUCE
WEST**
REALTOR®

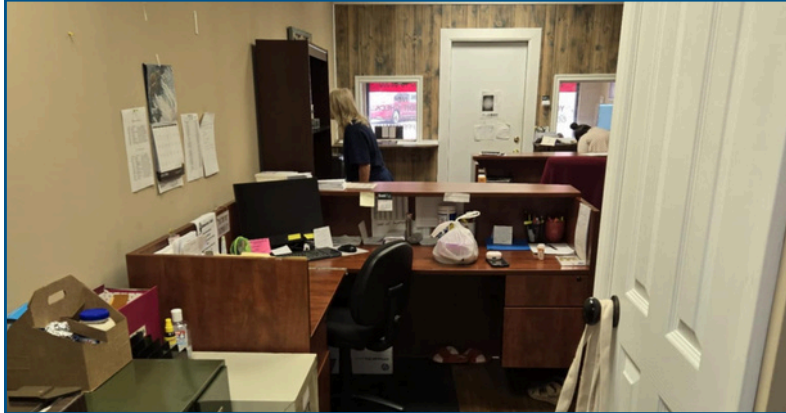
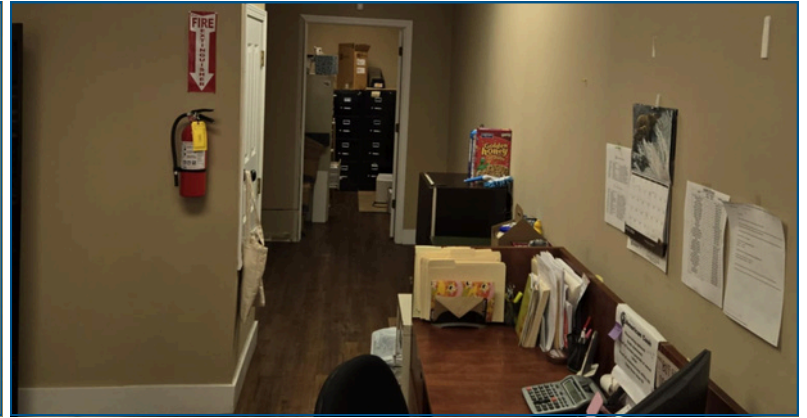
Office: 662.771.1101
Cell: 662.873.3007

Bruce@TomSmithLand.com

**Tom
Smith**
**LAND AND
HOMES**

Expect More. Get More.

Commercial Property



**BRUCE
WEST**
REALTOR®

Office: 662.771.1101
Cell: 662.873.3007

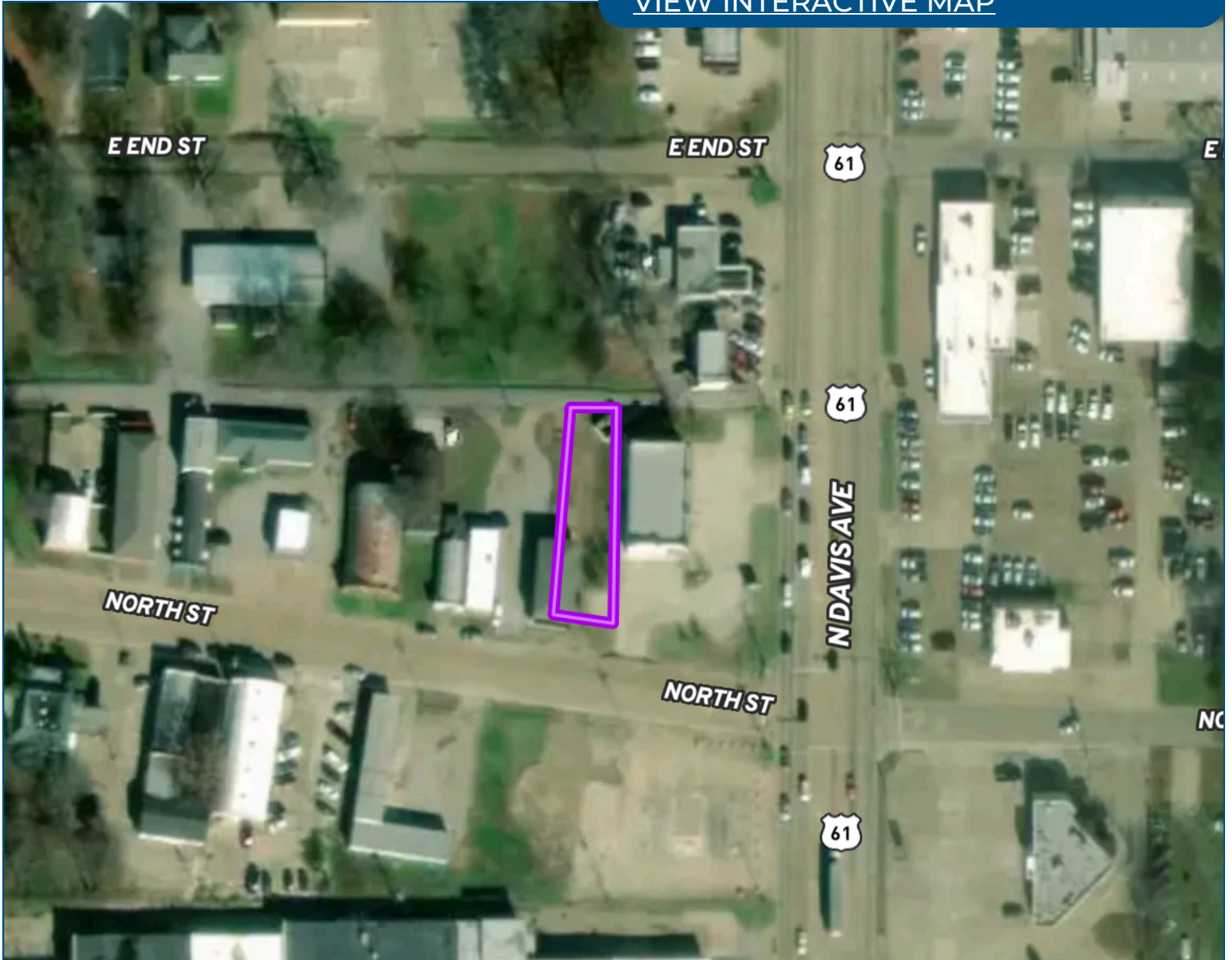
Bruce@TomSmithLand.com

**Tom
Smith**
**LAND AND
HOMES**

Expect More. Get More.

Aerial Map

[VIEW INTERACTIVE MAP](#)



**BRUCE
WEST**

REALTOR®

Office: 662.771.1101

Cell: 662.873.3007

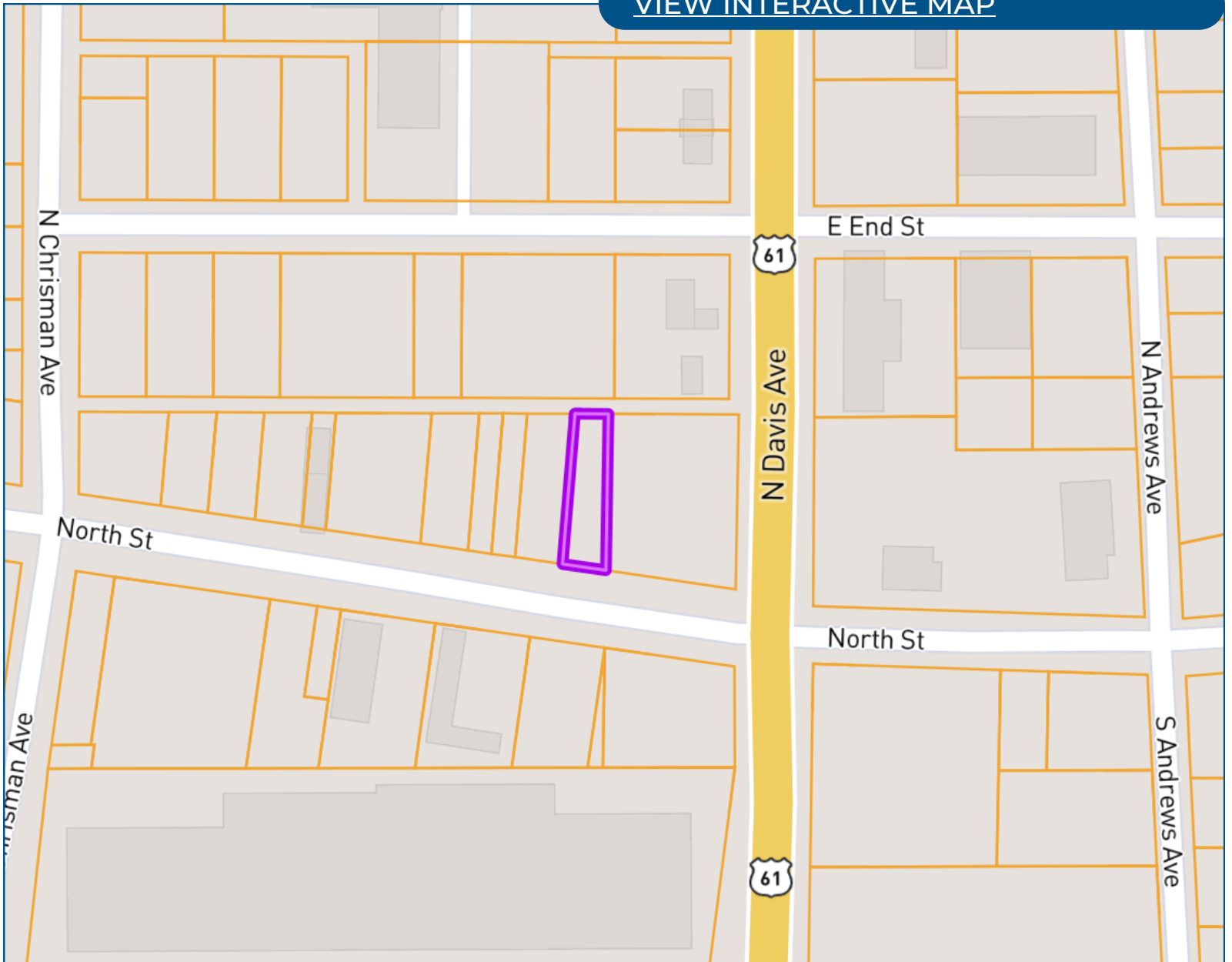
Bruce@TomSmithLand.com



Expect More. Get More.

Ownership Map

[VIEW INTERACTIVE MAP](#)



**BRUCE
WEST**
REALTOR®

Office: 662.771.1101
Cell: 662.873.3007

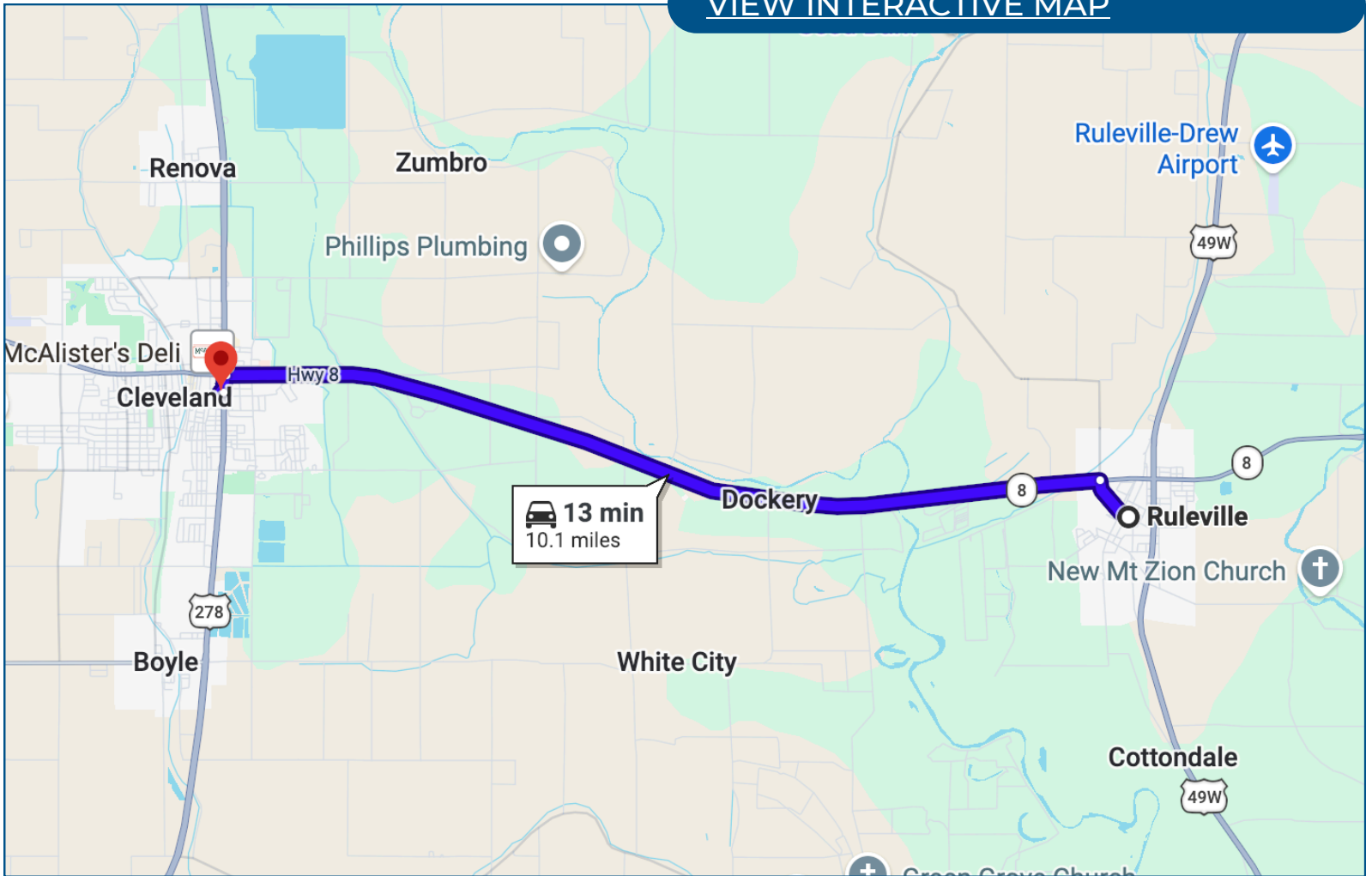
Bruce@TomSmithLand.com



Expect More. Get More.

Directional Map

[VIEW INTERACTIVE MAP](#)



Directions from Ruleville, MS:

Head toward N Ruby Ave for 0.5 miles. Turn left onto MS-8/Quiver St for 9.4 miles. Turn left onto N Davis Ave for 0.2 miles, then in 197 feet turn right. The destination will be on your left.

**BRUCE
WEST**
REALTOR®

Office: 662.771.1101
Cell: 662.873.3007

Bruce@TomSmithLand.com



Expect More. Get More.