

# Prime Investment Opportunity

Bolivar County

233 North Street, Cleveland, MS 38732



**\$210,000**



Expect More. Get More.

# Property Information

## Location:

- 233 North Street  
Cleveland, MS 38732

## Coordinates:

- 33.7446, -90.71645

## Property Use:

- Investment Opportunity
- Retail
- Office

# Property Highlights

- 0.13± Acres
- 1,746± Sq Ft
- Two Separate Units Under One Roof
- New Central A/C Unit
- Updated Water Heaters
- Updated Flooring & Exterior Paint



Expect More. Get More.

**BRUCE  
WEST**  
MANAGING BROKER, ALC®  
Office: 662.771.1101  
Cell: 662.873.3007  
Bruce@TomSmithLand.com

**A Real Estate Expert  
You Can Trust!**



# Commercial Property

Located in Cleveland, MS, this 1,746± sq. ft. mixed-use commercial property offers a prime investment opportunity in a vibrant college town filled with year-round festivals and events. Featuring two separate units under one roof, the building is 100% occupied with reliable tenants on Triple Net Leases, ensuring steady income. Positioned just off Highway 61 near the central downtown area, the property benefits from high visibility and strong traffic counts. Recently upgraded and well-cared-for, the property features a new central A/C unit, updated water heaters, bathroom, flooring, and fresh exterior paint. This property delivers excellent ROI potential for investors.



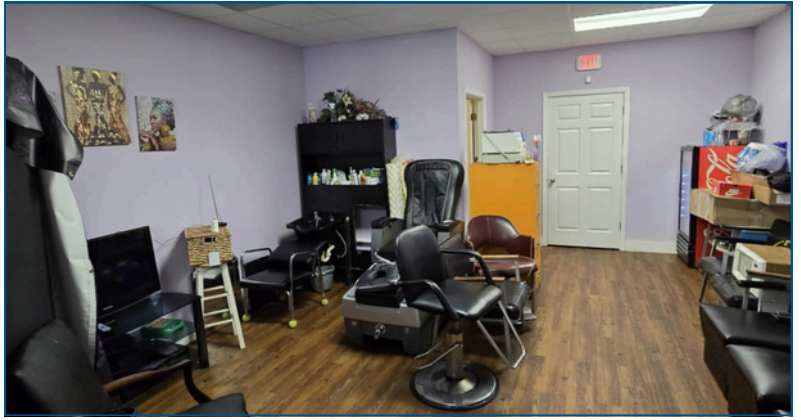
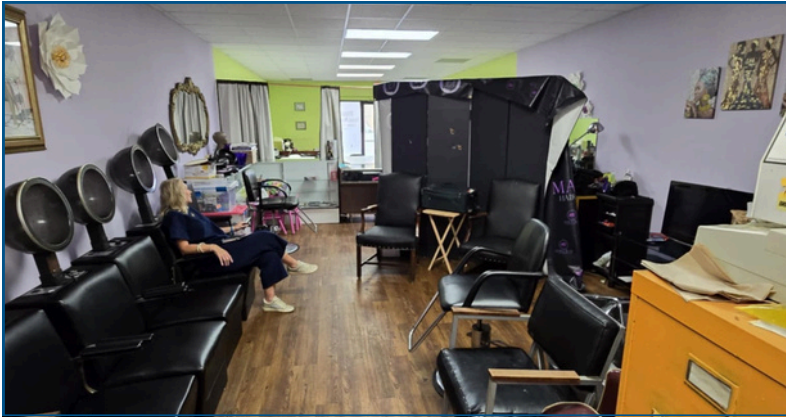
**BRUCE  
WEST**  
REALTOR®

Office: 662.771.1101  
Cell: 662.873.3007

Bruce@TomSmithLand.com



# Commercial Property



**BRUCE  
WEST**  
REALTOR®

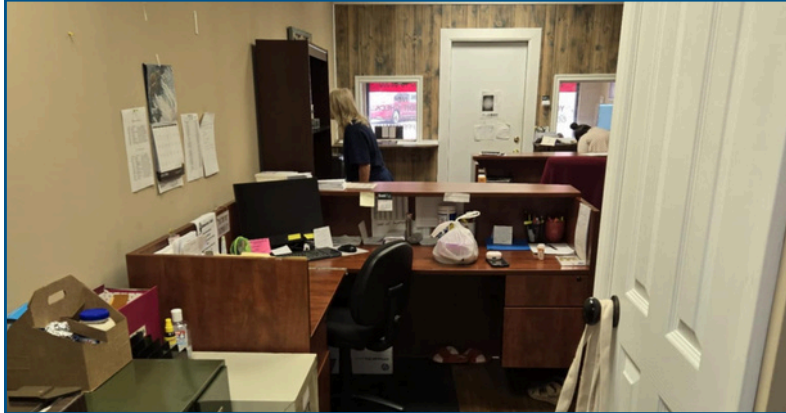
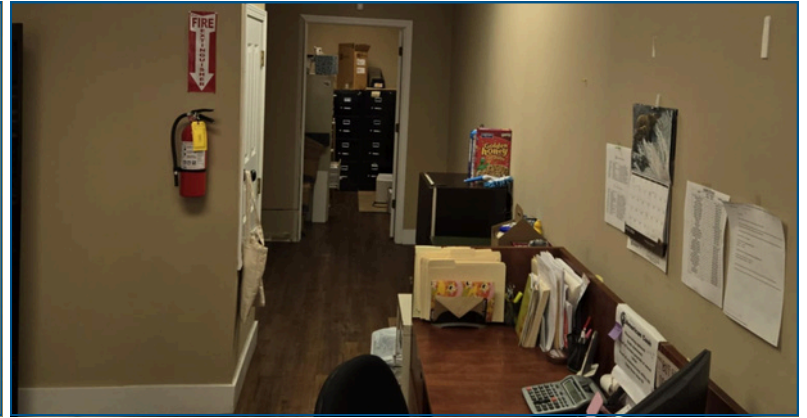
Office: 662.771.1101  
Cell: 662.873.3007

Bruce@TomSmithLand.com

**Tom  
Smith**  
**LAND AND  
HOMES**

Expect More. Get More.

# Commercial Property



**BRUCE  
WEST**  
REALTOR®

Office: 662.771.1101  
Cell: 662.873.3007

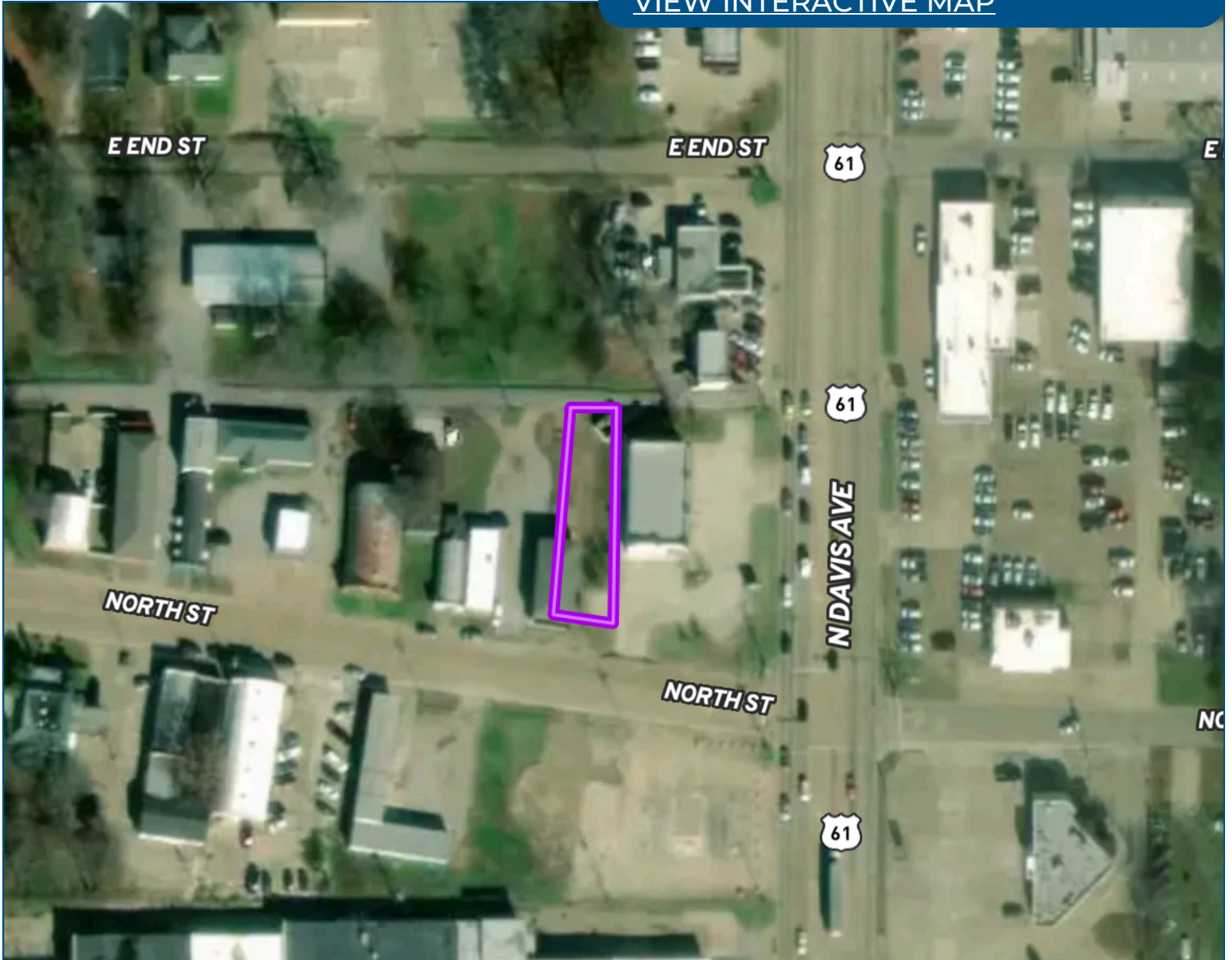
Bruce@TomSmithLand.com



Expect More. Get More.

# Aerial Map

[VIEW INTERACTIVE MAP](#)



**BRUCE  
WEST**

REALTOR®

Office: 662.771.1101

Cell: 662.873.3007

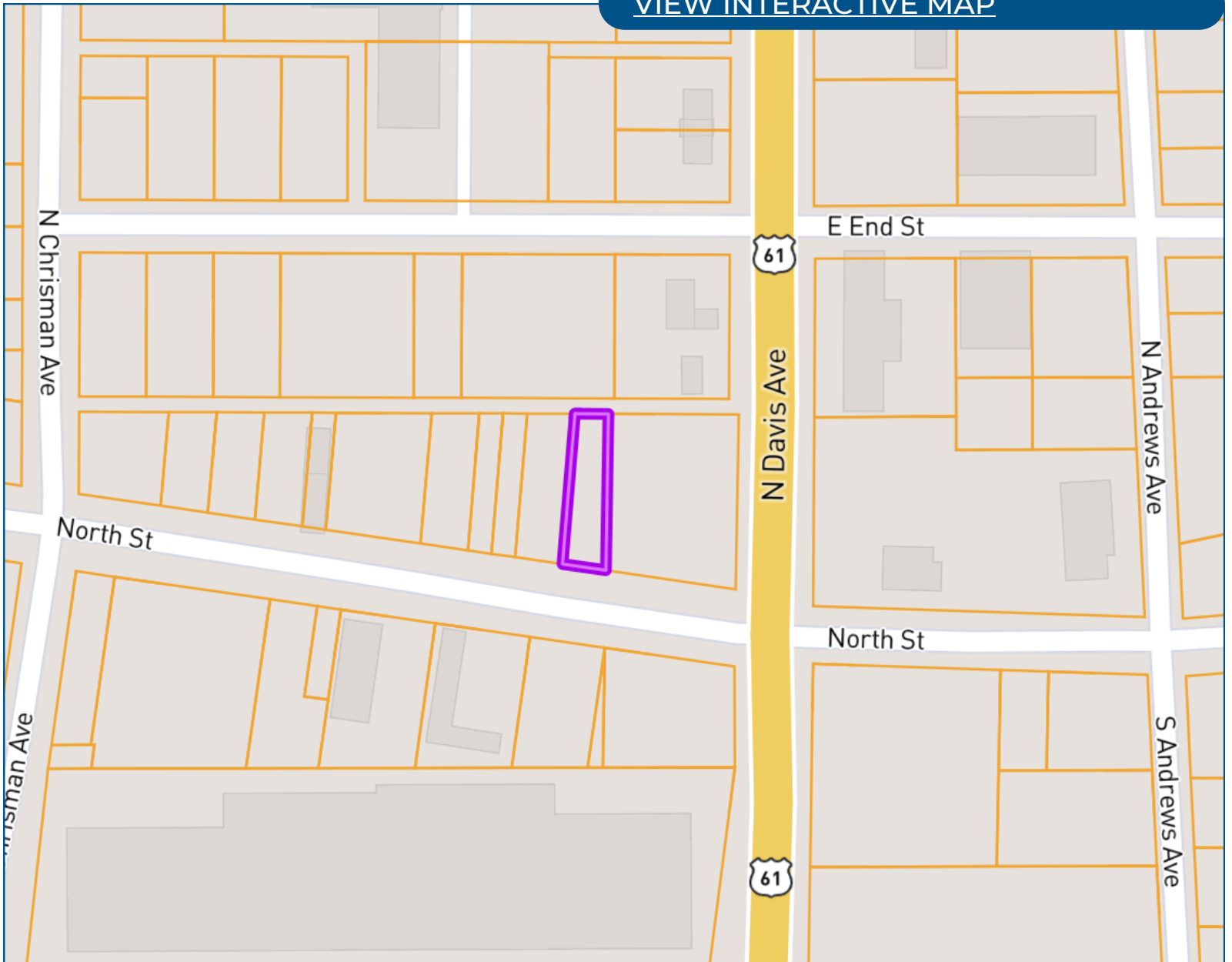
Bruce@TomSmithLand.com



Expect More. Get More.

# Ownership Map

[VIEW INTERACTIVE MAP](#)



**BRUCE  
WEST**

REALTOR®

Office: 662.771.1101

Cell: 662.873.3007

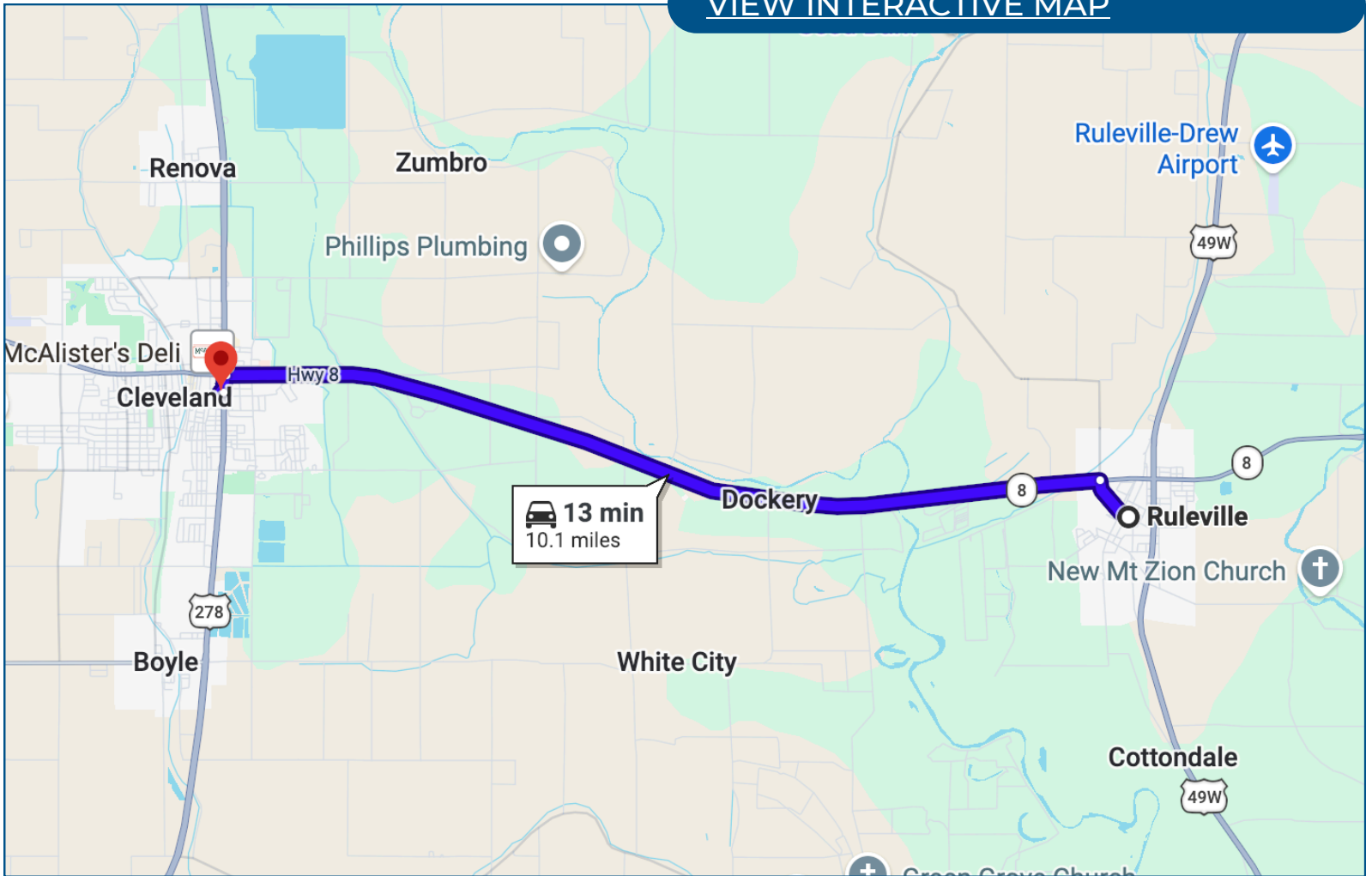
Bruce@TomSmithLand.com



Expect More. Get More.

# Directional Map

[VIEW INTERACTIVE MAP](#)



## Directions from Ruleville, MS:

Head toward N Ruby Ave for 0.5 miles. Turn left onto MS-8/Quiver St for 9.4 miles. Turn left onto N Davis Ave for 0.2 miles, then in 197 feet turn right. The destination will be on your left.

**BRUCE  
WEST**  
REALTOR®

Office: 662.771.1101  
Cell: 662.873.3007

Bruce@TomSmithLand.com



Expect More. Get More.