

Commercial Property For Lease

733 Desoto Avenue, Clarksdale, MS 38614
\$1,800 Per Month



Discover prime commercial property available for lease at 733 Desoto Ave in the heart of Clarksdale, Coahoma County. This location offers 5 versatile units, each priced at \$1,800 per month. Situated in a busy area with high traffic, this space presents an excellent opportunity for your business to thrive. Whether you're looking to open a retail shop, office, or service-based establishment, this property is perfectly positioned to attract customers and enhance your visibility. Don't miss out on the potential to establish your business; call Anthony Steen today!



**ANTHONY
STEEN**

REALTOR®

Office: 601.898.2772

Cell: 662.645.5151

Anthony@TomSmithLand.com



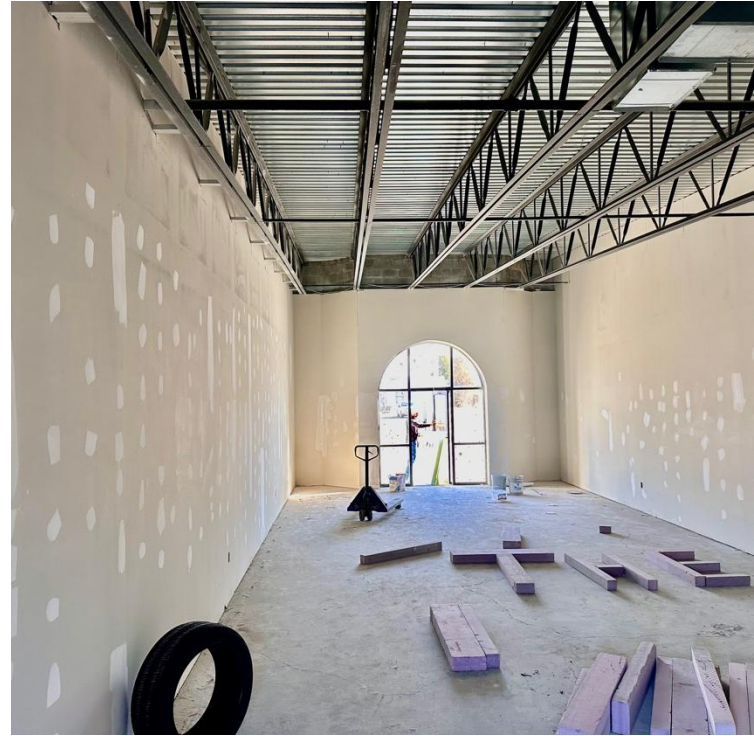
Expect More. Get More.

A Real Estate Expert You Can Trust

TomSmithLandandHomes.com

Information is believed to be accurate but not guaranteed.





A Real Estate Expert *You Can Trust!*

ANTHONY STEEN

REALTOR®

O: 601.898.2772 C: 662.645.5151

Anthony@TomSmithLand.com

TomSmithLandandHomes.com



Expect More. Get More.



Information is believed to be accurate but not guaranteed.



A Real Estate Expert
You Can Trust!

ANTHONY STEEN

REALTOR®

O: 601.898.2772 C: 662.645.5151

Anthony@TomSmithLand.com

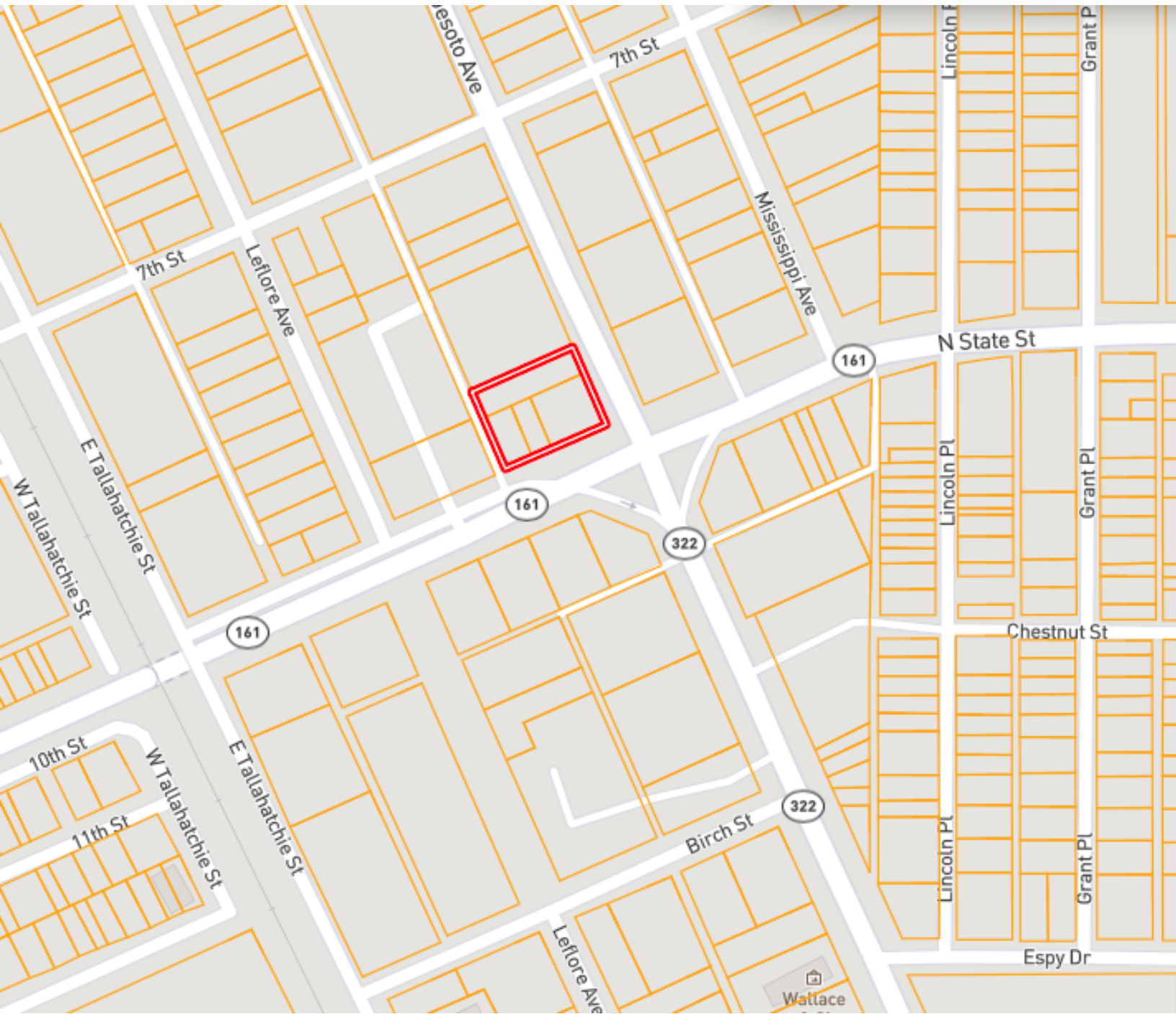
TomSmithLandandHomes.com



Expect More. Get More.



OWNERSHIP MAP



A Real Estate Expert
You Can Trust!

ANTHONY STEEN
REALTOR®

O: 601.898.2772 C: 662.645.5151

Anthony@TomSmithLand.com

TomSmithLandandHomes.com

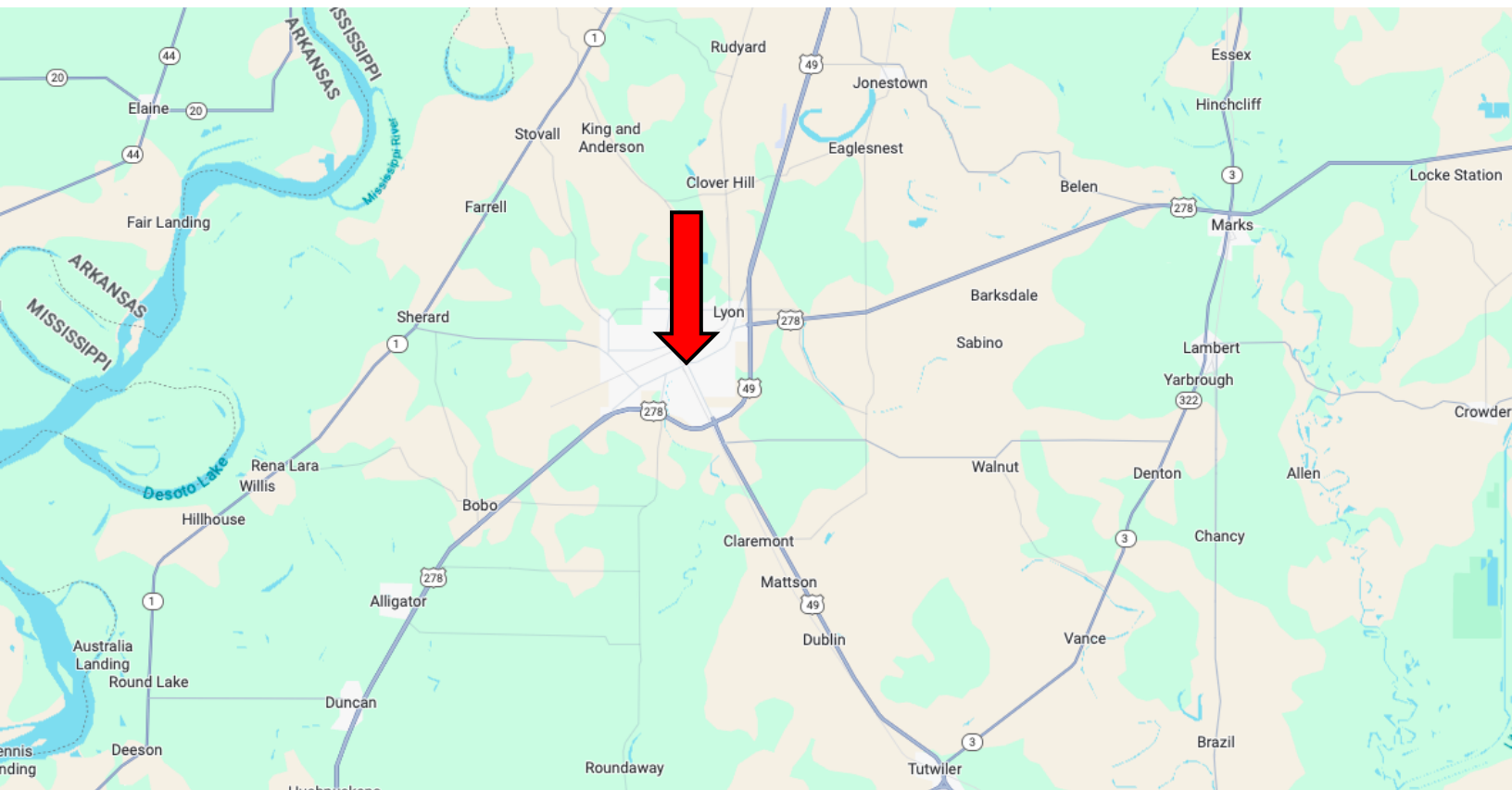


Expect More. Get More.

Information is believed to be accurate but not guaranteed.



DIRECTIONAL MAP



Address: 733 Desoto Avenue, Clarksdale, MS 38614

Directions from US-61 & US 49, Clarksdale, MS:

Travel northwest on US 49 for 0.1 miles. Continue onto Desoto Ave. After 1.9 miles, the property will be on the left. [Google Maps Link](#)



**ANTHONY
STEEN**

REALTOR®

Office: 601.898.2772

Cell: 662.645.5151

Anthony@TomSmithLand.com



Expect More. Get More.

A Real Estate Expert You Can Trust

TomSmithLandandHomes.com

Information is believed to be accurate but not guaranteed.

