

# Luxury Country Estate & Hunting Retreat

Custom-Built Home • Income-Producing Land • Turn-Key Outdoor Lifestyle

121.13± Acre Private Estate with a Home

**Panola County, Como, Mississippi**

**\$859,000**



**Tom  
Smith  
LAND AND  
HOMES**  
Expect More. Get More.

# Property Information

## Location

- 333 Paul White Road  
Como, MS 38619

## Coordinates:

- 34.5123, -89.8137

## Property Use:

- Private Estate
- Hunting
- Recreational
- Income-Producing Investment

# Property Highlights

- 3,300± Sq Ft Custom-Built Home (Built in 2018)
- 121.13± Acres of Managed Timber & Hardwoods
- Established Food Plots & Hunting Setups
- Private Shooting Range with a Shed
- Abundant Deer, Turkey, and Small Game
- Gated Entrance with a Long, Private Drive



**LESLIE PINNIX** REALTOR®  
O: 662.771.1101 | C: 662.820.2205  
Leslie@TomSmithLand.com

**BRUCE WEST** MANAGING BROKER  
O: 662.441.2500 | C: 662.873.3007  
Bruce@TomSmithLand.com

**Expect More. Get More.**

**TomSmithLandandHomes.com**

*The Real Estate Experts You Can Trust!*



Information is believed to be accurate but not guaranteed.

# The Property

121.13± Acres

Experience country living at its finest on this breathtaking 121.13± acre retreat, where a custom-built 3,300± square foot home, completed in 2018, is surrounded by managed timber, abundant wildlife, and thoughtfully designed outdoor spaces. Enter through the gated entrance and follow the long private drive as the landscape opens into a peaceful, secluded setting that immediately feels like home. Inside, the residence features a warm and inviting open-concept design, seamlessly connecting the kitchen and den while capturing scenic views of the surrounding land. The gourmet kitchen is beautifully appointed with custom cabinetry, granite countertops, under-cabinet lighting, a gas cooktop and oven, an oversized island with built-in outlets, and a spacious walk-in pantry with a double sink. The den offers a striking log fireplace with a gas starter, complemented by hickory hardwood floors, ceramic tile, and large windows that bring the outdoors in.

Designed for both comfort and versatility, the home includes three bedrooms, four and a half bathrooms, a bonus bunkroom with a private bath, and two office spaces—one of which could easily serve as an additional bedroom. Premium finishes such as Pella windows, Hunter ceiling fans, Delta fixtures, and energy-efficient LED lighting enhance the overall quality, while a reinforced storm/safe room and whole-home generator provide added peace of mind. Step outside to enjoy the screened-in porch, perfect for quiet mornings or watching deer and turkey roam, or entertain on the 16x24 lighted patio complete with a fountain and landscaped setting.

Beyond the home, the property is a true outdoor paradise, ideal for hunting, recreation, and investment. With managed timber, established food plots, multiple tree stands, and a private shooting range, the land is well-equipped for outdoor enthusiasts. Income-producing opportunities are supported by CRP acreage, while a mix of pine, oak, and mature hardwoods adds long-term value. Additional improvements include multiple sheds, storage containers with power and dehumidifiers, and equipment for maintaining the property. A deer-fenced garden and scattered fruit trees further enhance the lifestyle appeal. Whether you're seeking a private estate, hunting retreat, or income-producing investment, this exceptional property offers a rare combination of natural beauty, functionality, and modern comfort.

# The Property

[Click To View Full Property Tour](#)



**LESLIE PINNIX**

REALTOR®

O: 662.771.1101 | C: 662.820.2205

Leslie@TomSmithLand.com

**BRUCE WEST**

MANAGING BROKER

O: 662.441.2500 | C: 662.873.3007

Bruce@TomSmithLand.com

**Expect More. Get More.**

*The Real Estate Experts You Can Trust!*

[TomSmithLandandHomes.com](http://TomSmithLandandHomes.com)

Information is believed to be accurate but not guaranteed.



# The Property



**LESLIE PINNIX**  
REALTOR®  
O: 662.771.1101 | C: 662.820.2205  
Leslie@TomSmithLand.com

**BRUCE WEST**  
MANAGING BROKER  
O: 662.441.2500 | C: 662.873.3007  
Bruce@TomSmithLand.com

**Expect More. Get More.**

*The Real Estate Experts You Can Trust!*

**TomSmithLandandHomes.com**

Information is believed to be accurate but not guaranteed.



# The Property



**LESLIE PINNIX**  
REALTOR®  
O: 662.771.1101 | C: 662.820.2205  
Leslie@TomSmithLand.com

**BRUCE WEST**  
MANAGING BROKER  
O: 662.441.2500 | C: 662.873.3007  
Bruce@TomSmithLand.com

**Expect More. Get More.**

*The Real Estate Experts You Can Trust!*

[TomSmithLandandHomes.com](http://TomSmithLandandHomes.com)

Information is believed to be accurate but not guaranteed.



# The Property



**LESLIE PINNIX**  
REALTOR®  
O: 662.771.1101 | C: 662.820.2205  
Leslie@TomSmithLand.com

**BRUCE WEST**  
MANAGING BROKER  
O: 662.441.2500 | C: 662.873.3007  
Bruce@TomSmithLand.com

**Expect More. Get More.**

*The Real Estate Experts You Can Trust!*

**TomSmithLandandHomes.com**

Information is believed to be accurate but not guaranteed.



# The Property



**LESLIE PINNIX**  
 REALTOR®  
 O: 662.771.1101 | C: 662.820.2205  
 Leslie@TomSmithLand.com

**BRUCE WEST**  
 MANAGING BROKER  
 O: 662.441.2500 | C: 662.873.3007  
 Bruce@TomSmithLand.com

**Expect More. Get More.**

*The Real Estate Experts You Can Trust!*

[TomSmithLandandHomes.com](http://TomSmithLandandHomes.com)

Information is believed to be accurate but not guaranteed.



# The Property



**LESLIE PINNIX**

REALTOR®

O: 662.771.1101 | C: 662.820.2205

Leslie@TomSmithLand.com

**BRUCE WEST**

MANAGING BROKER

O: 662.441.2500 | C: 662.873.3007

Bruce@TomSmithLand.com

**Expect More. Get More.**

*The Real Estate Experts You Can Trust!*

**TomSmithLandandHomes.com**

Information is believed to be accurate but not guaranteed.



# The Property



**LESLIE PINNIX**

REALTOR®

O: 662.771.1101 | C: 662.820.2205

Leslie@TomSmithLand.com

**BRUCE WEST**

MANAGING BROKER

O: 662.441.2500 | C: 662.873.3007

Bruce@TomSmithLand.com

**Expect More. Get More.**

*The Real Estate Experts You Can Trust!*

**TomSmithLandandHomes.com**

Information is believed to be accurate but not guaranteed.



# The Property



**LESLIE PINNIX**

REALTOR®

O: 662.771.1101 | C: 662.820.2205

Leslie@TomSmithLand.com

**BRUCE WEST**

MANAGING BROKER

O: 662.441.2500 | C: 662.873.3007

Bruce@TomSmithLand.com

**Expect More. Get More.**

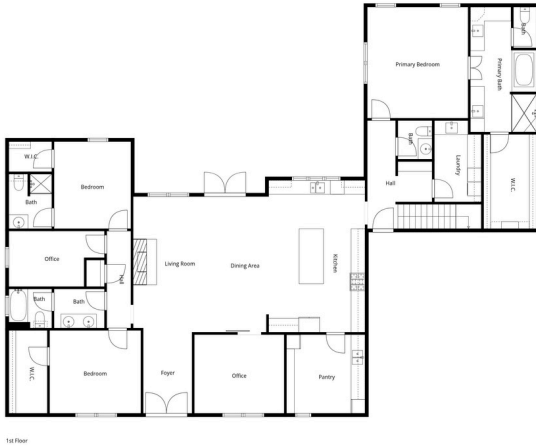
*The Real Estate Experts You Can Trust!*



[TomSmithLandandHomes.com](http://TomSmithLandandHomes.com)

Information is believed to be accurate but not guaranteed.

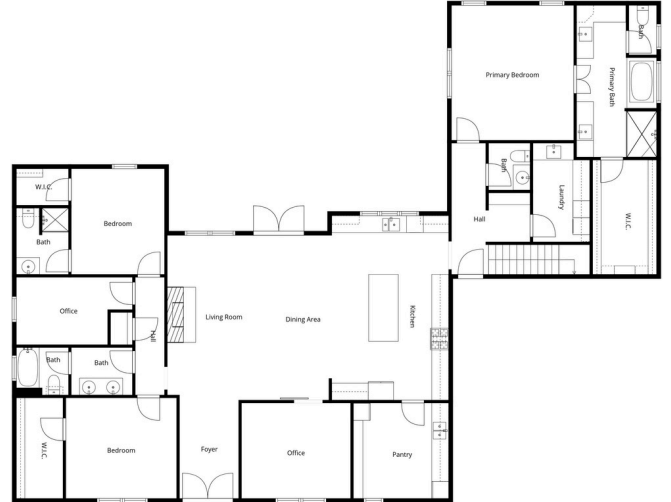
# The Property



1st floor



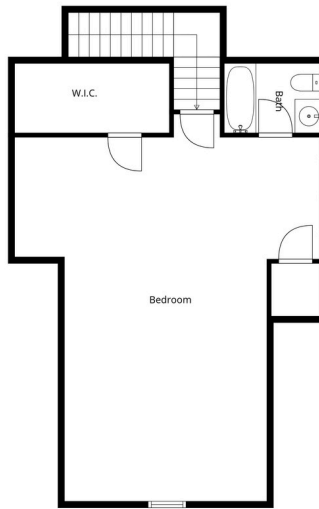
2nd floor



Floor Plan Captured With The Perfect Listing® Real Estate Photography. Measurements Deemed Highly Reliable But Not Guaranteed



Floor Plan Captured With The Perfect Listing® Real Estate Photography. Measurements Deemed Highly Reliable But Not Guaranteed



Floor Plan Captured With The Perfect Listing® Real Estate Photography. Measurements Deemed Highly Reliable But Not Guaranteed



**LESLIE PINNIX**  
 REALTOR®  
 O: 662.771.1101 | C: 662.820.2205  
 Leslie@TomSmithLand.com

**BRUCE WEST**  
 MANAGING BROKER  
 O: 662.441.2500 | C: 662.873.3007  
 Bruce@TomSmithLand.com

**Expect More. Get More.**

*The Real Estate Experts You Can Trust!*

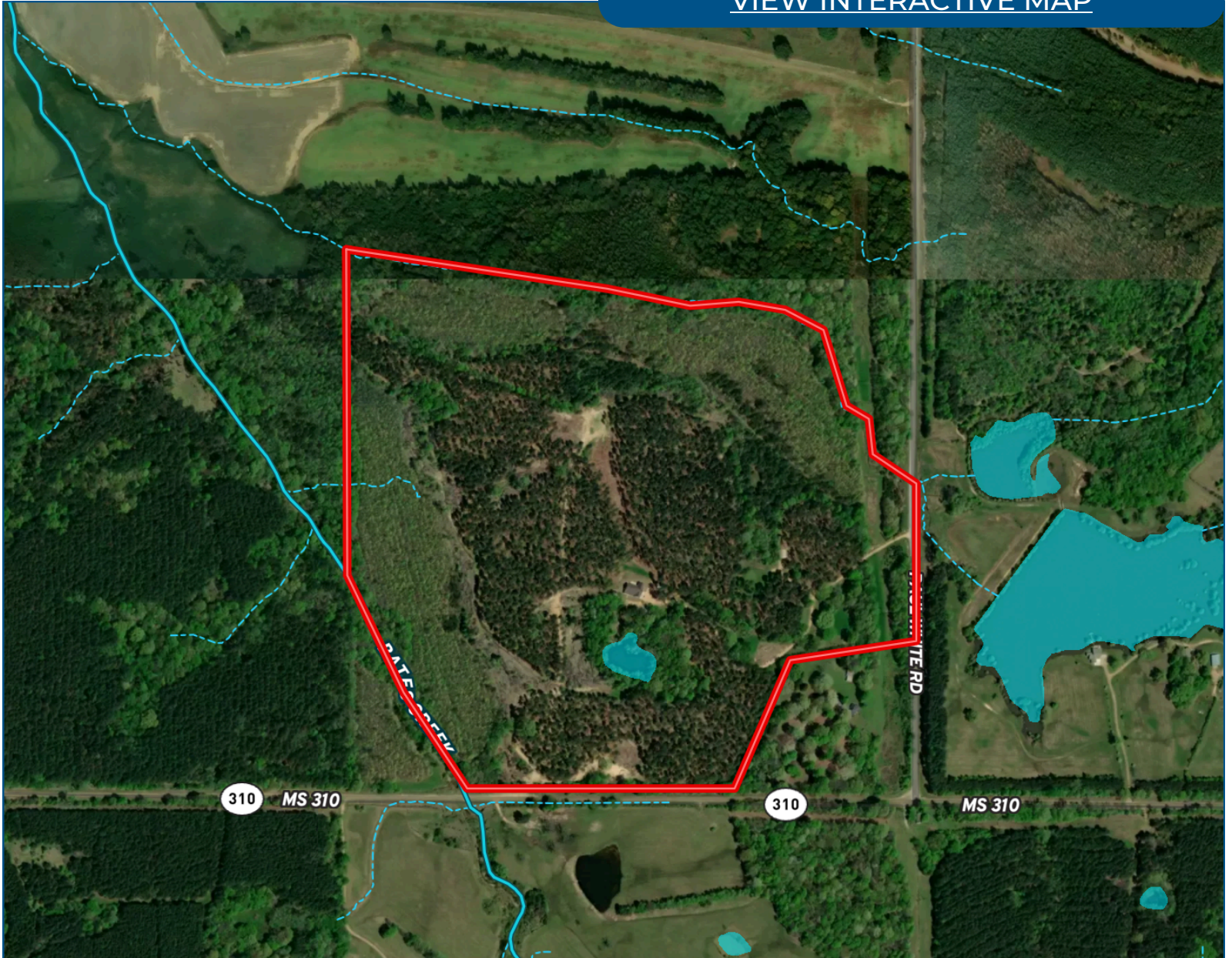
**TomSmithLandandHomes.com**

Information is believed to be accurate but not guaranteed.



# Aerial Map

[VIEW INTERACTIVE MAP](#)



**LESLIE PINNIX**

REALTOR®

O: 662.771.1101 | C: 662.820.2205

Leslie@TomSmithLand.com

**BRUCE WEST**

MANAGING BROKER

O: 662.441.2500 | C: 662.873.3007

Bruce@TomSmithLand.com

**Expect More. Get More.**

*The Real Estate Experts You Can Trust!*

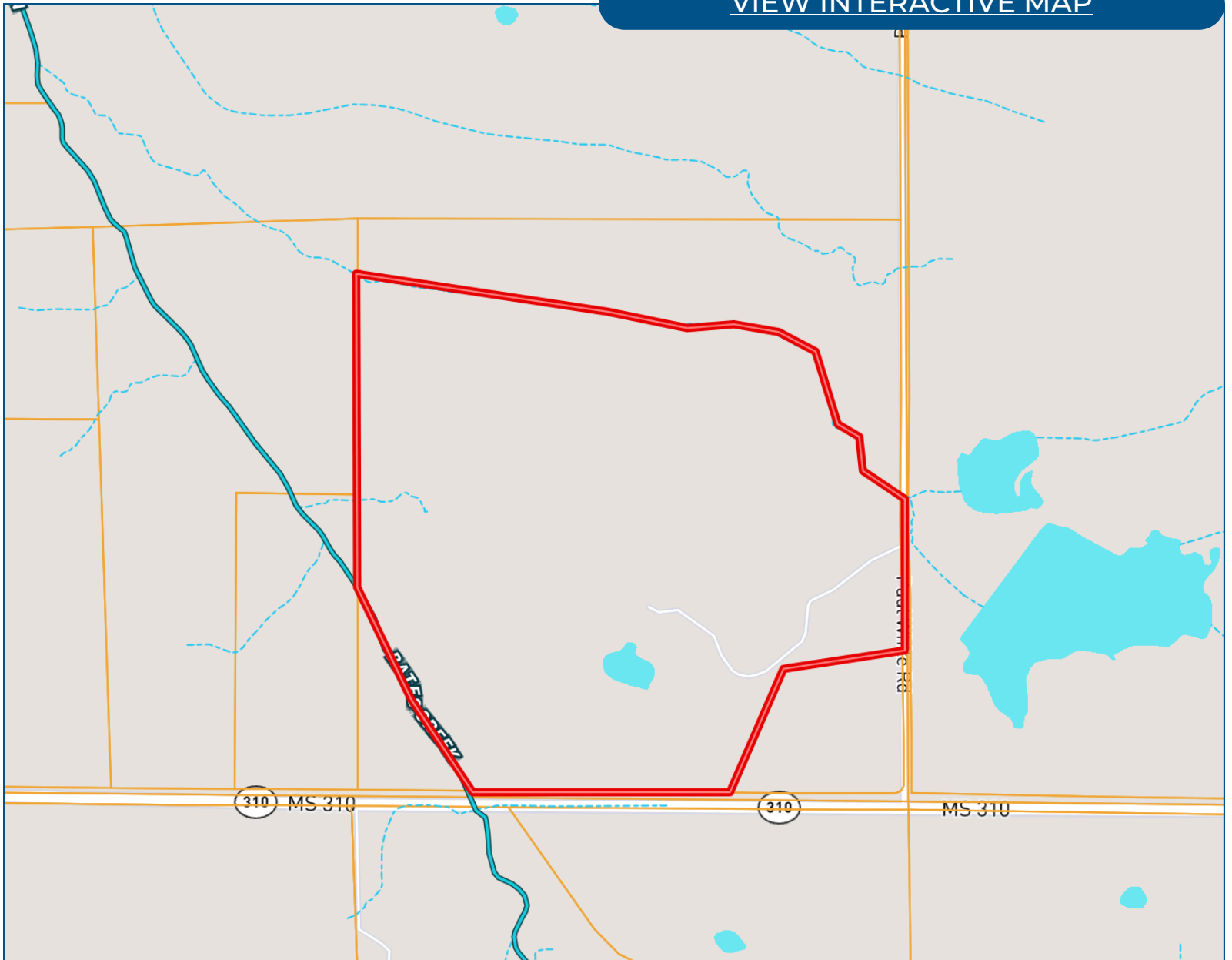


[TomSmithLandandHomes.com](http://TomSmithLandandHomes.com)

Information is believed to be accurate but not guaranteed.

# Ownership Map

[VIEW INTERACTIVE MAP](#)



**LESLIE PINNIX**

REALTOR®

O: 662.771.1101 | C: 662.820.2205

Leslie@TomSmithLand.com

**BRUCE WEST**

MANAGING BROKER

O: 662.441.2500 | C: 662.873.3007

Bruce@TomSmithLand.com

**Expect More. Get More.**

*The Real Estate Experts You Can Trust!*

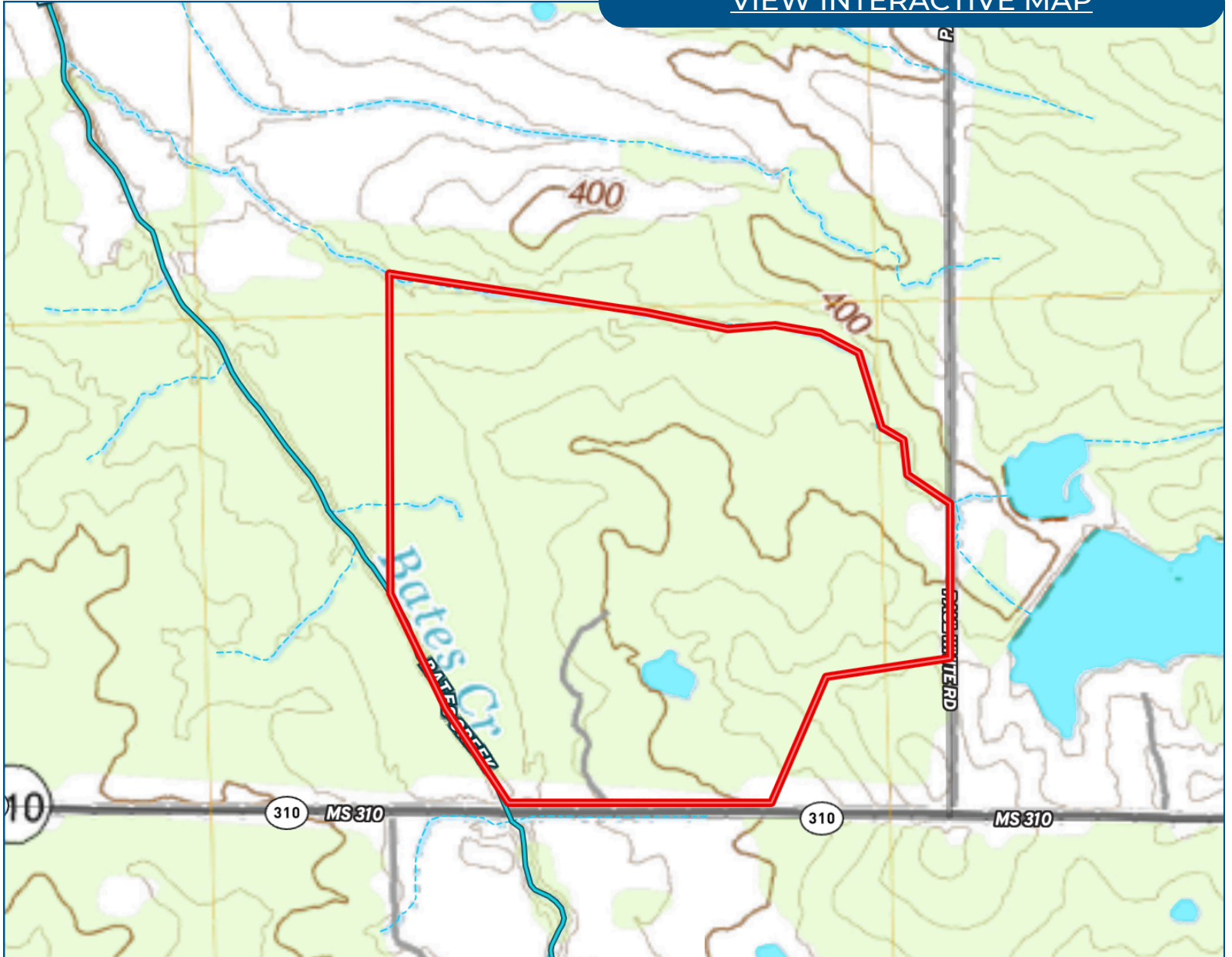
[TomSmithLandandHomes.com](http://TomSmithLandandHomes.com)

Information is believed to be accurate but not guaranteed.



# Topo Map

[VIEW INTERACTIVE MAP](#)



**LESLIE PINNIX**  
REALTOR®  
O: 662.771.1101 | C: 662.820.2205  
Leslie@TomSmithLand.com



**BRUCE WEST**  
MANAGING BROKER  
O: 662.441.2500 | C: 662.873.3007  
Bruce@TomSmithLand.com

**Expect More. Get More.**

*The Real Estate Experts You Can Trust!*

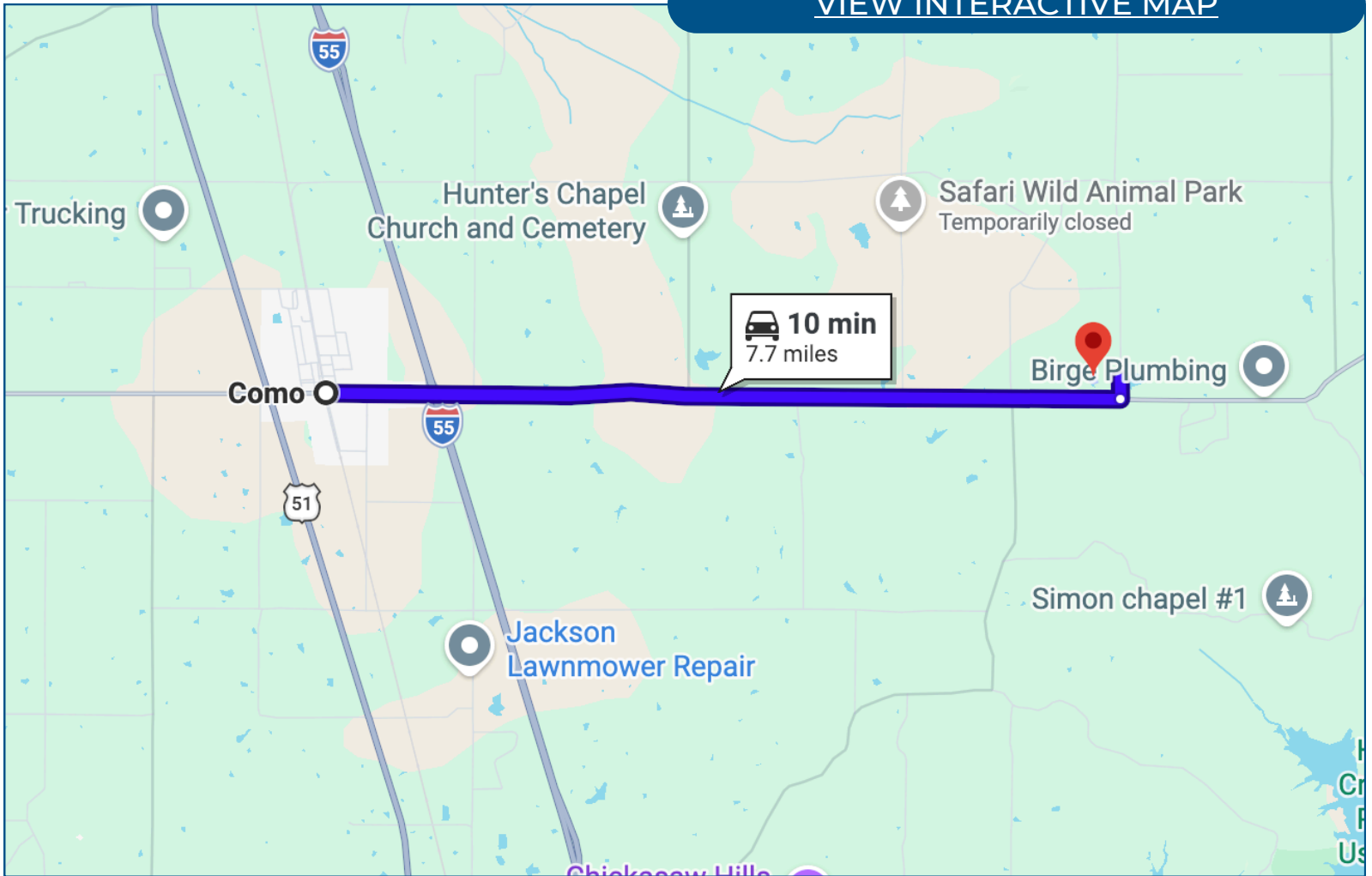
[TomSmithLandandHomes.com](http://TomSmithLandandHomes.com)

Information is believed to be accurate but not guaranteed.



# Directional Map

[VIEW INTERACTIVE MAP](#)



## From I-55 (Como Exit):

Take Exit 271 and travel west on MS-310 toward Como. Continue approximately 7–8 miles, then turn toward Senatobia and travel south for 5–6 miles to the property entrance. The property is accessed through a gated drive. Please use the interactive map or contact the listing agent for exact GPS directions.



**LESLIE PINNIX**

REALTOR®

O: 662.771.1101 | C: 662.820.2205

Leslie@TomSmithLand.com

**BRUCE WEST**

MANAGING BROKER

O: 662.441.2500 | C: 662.873.3007

Bruce@TomSmithLand.com

**Expect More. Get More.**

*The Real Estate Experts You Can Trust!*

[TomSmithLandandHomes.com](http://TomSmithLandandHomes.com)

Information is believed to be accurate but not guaranteed.

