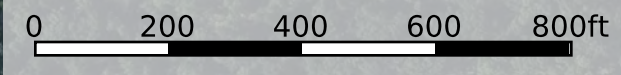
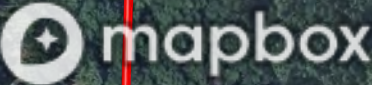


--- Road / Trail    □ Boundary    -.-.- Stream, Intermittent    — River/Creek    ■ Water Body



**TRACT 1 - 85± ACRES**

**TRACT 2 -**



--- Road / Trail    □ Boundary



**TRACT 1 - 85± ACRES**

**TRACT 2 - 140± ACRES**

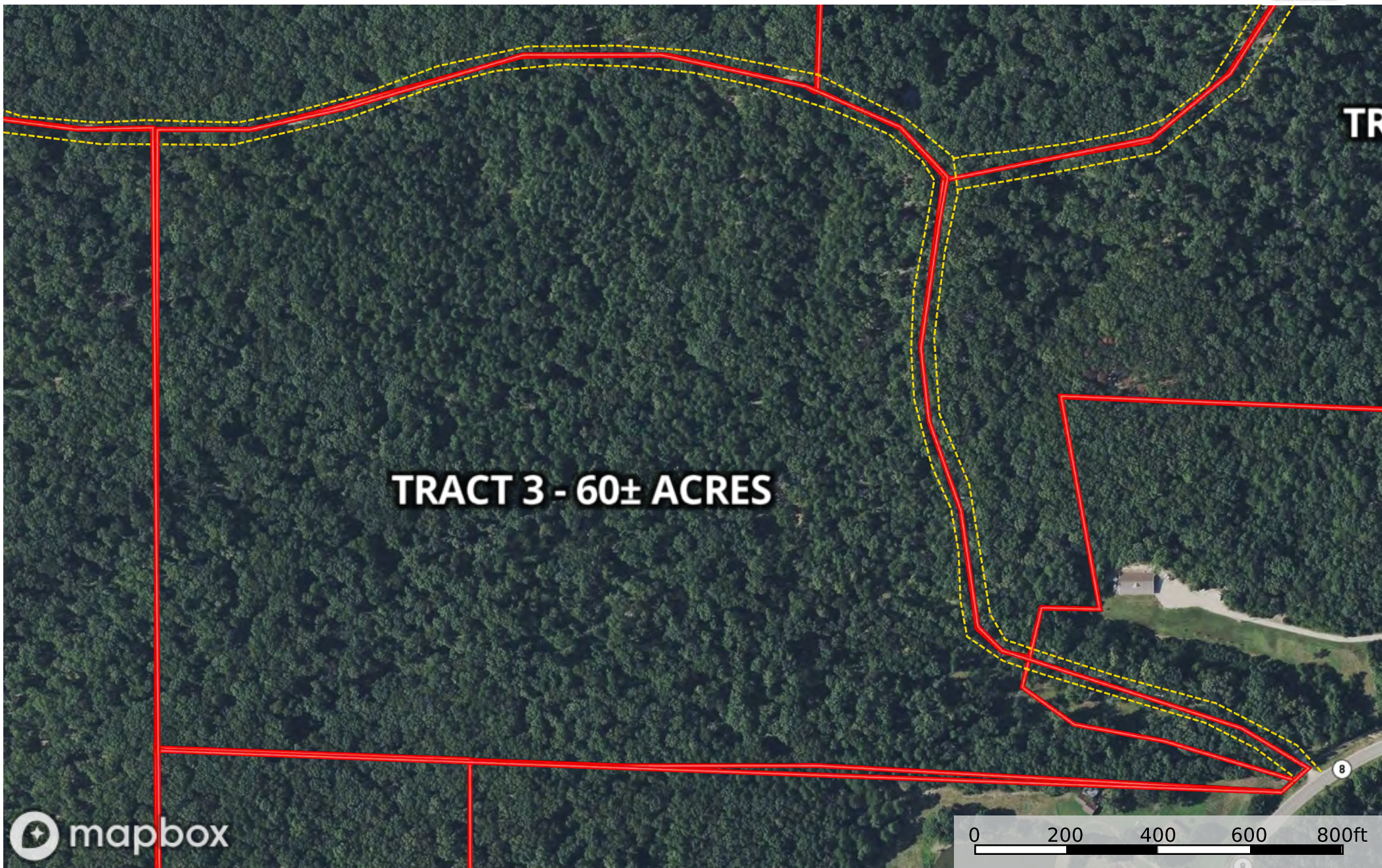
**TRACT 3 - 60± A**

**TRACT 11 - 30± ACRES**



 Road / Trail  Boundary

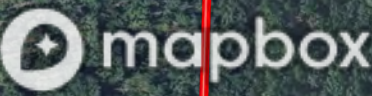




--- Road / Trail    ▭ Boundary

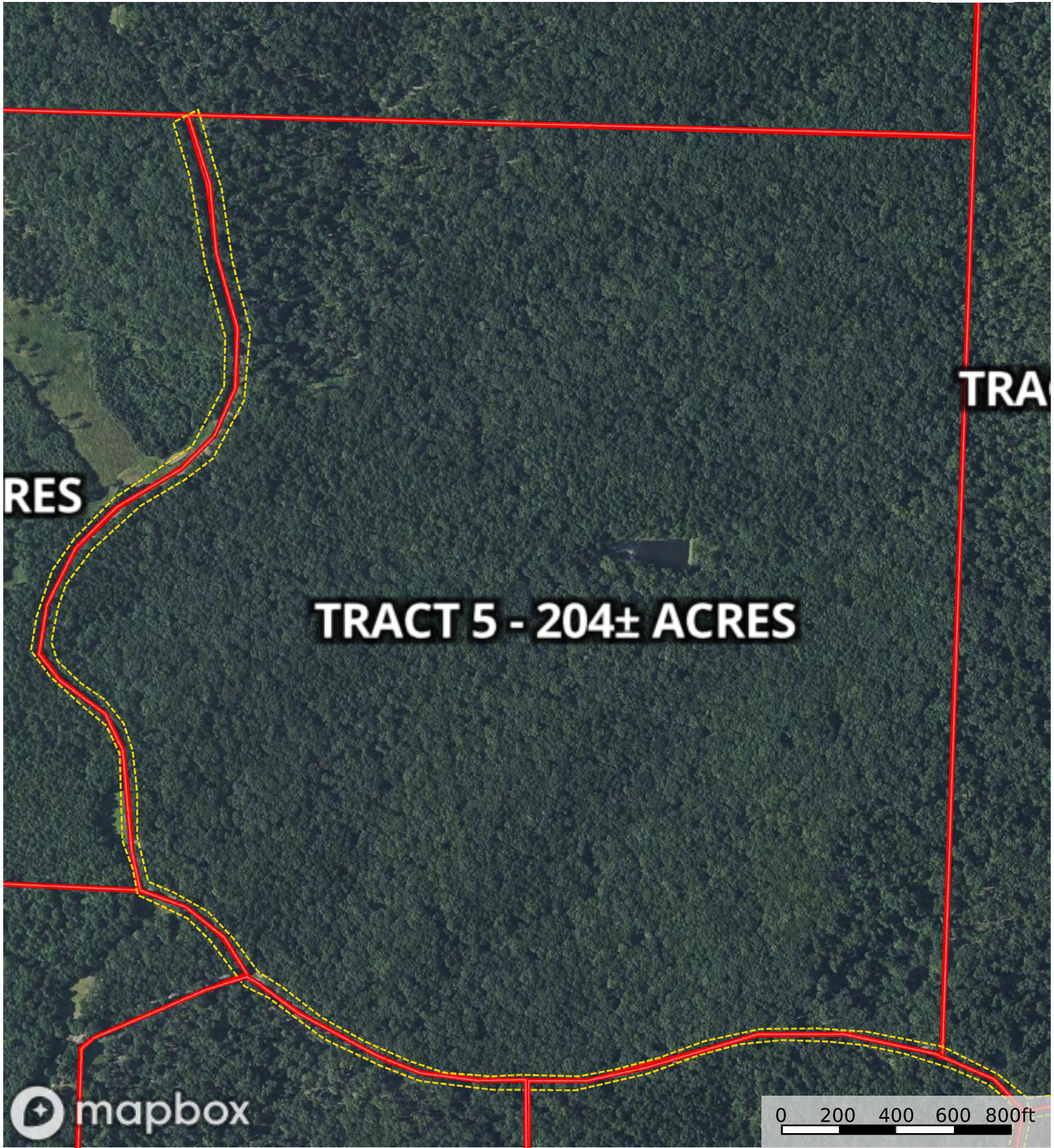


TRACT 4 - 108± ACRES



--- Road / Trail    □ Boundary



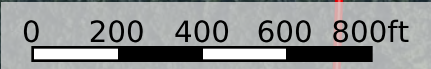
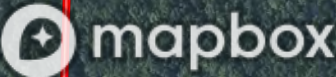


--- Road / Trail    □ Boundary



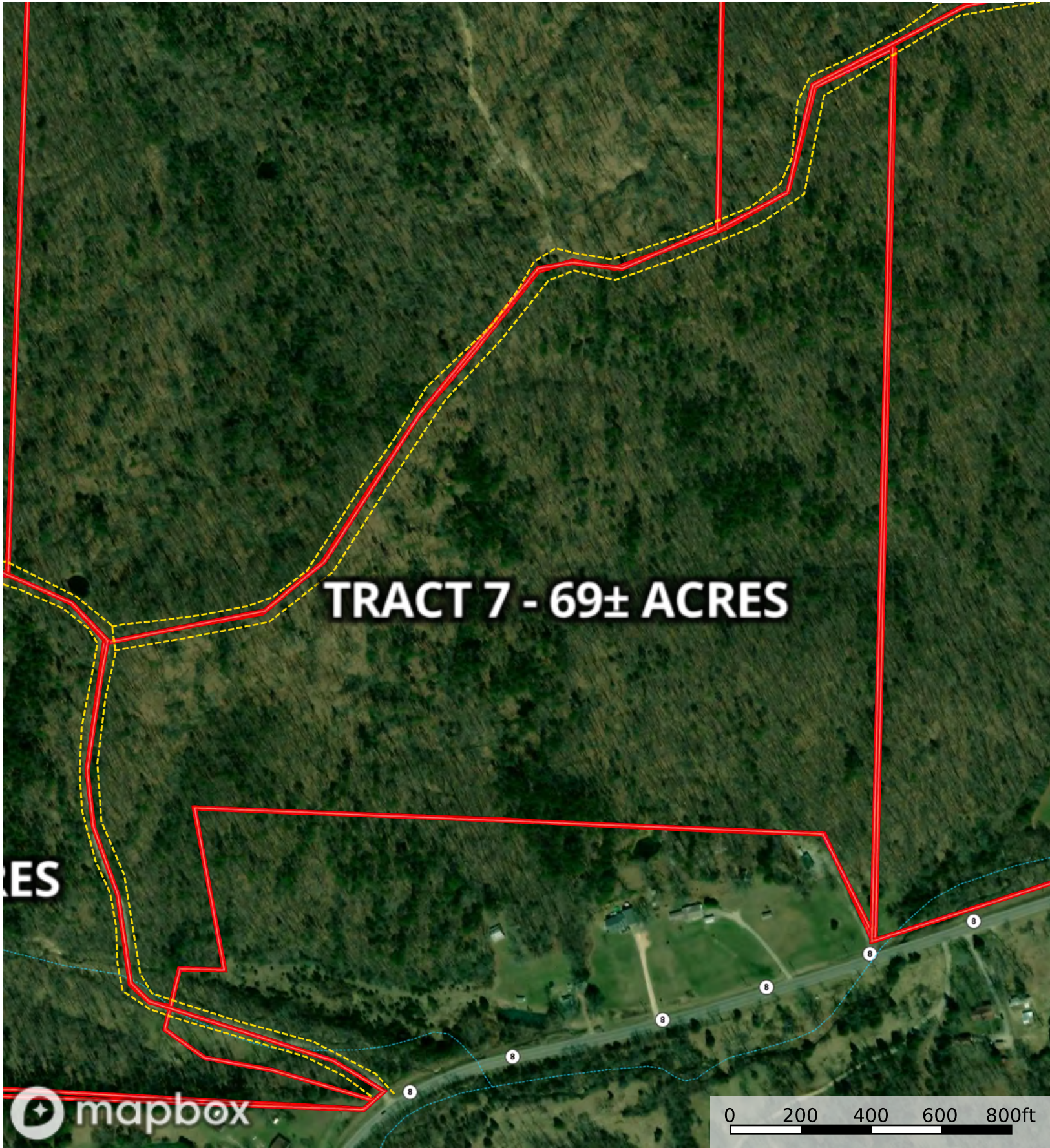


**TRACT 6 - 221± ACRES**



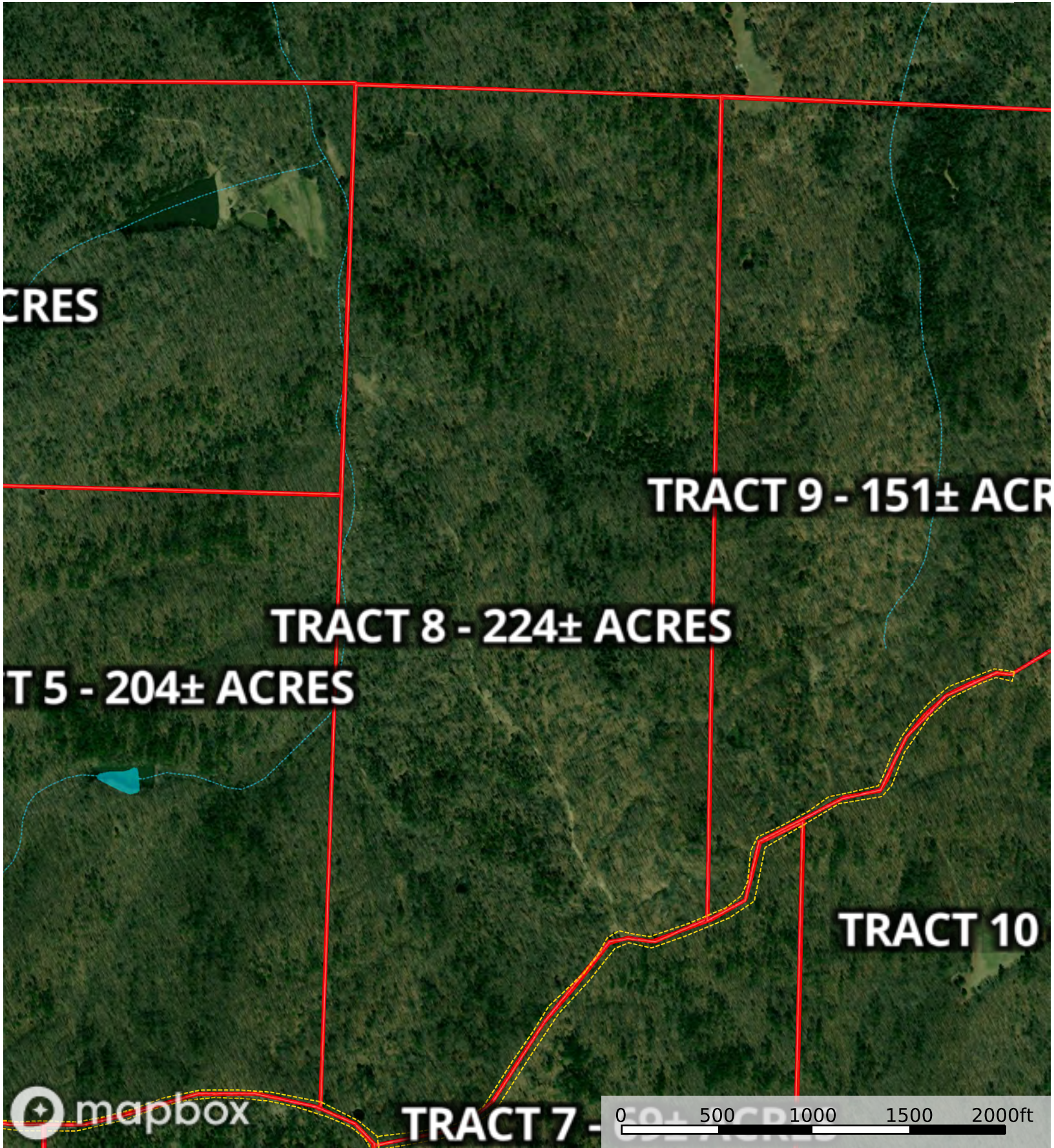
--- Road / Trail    ▭ Boundary





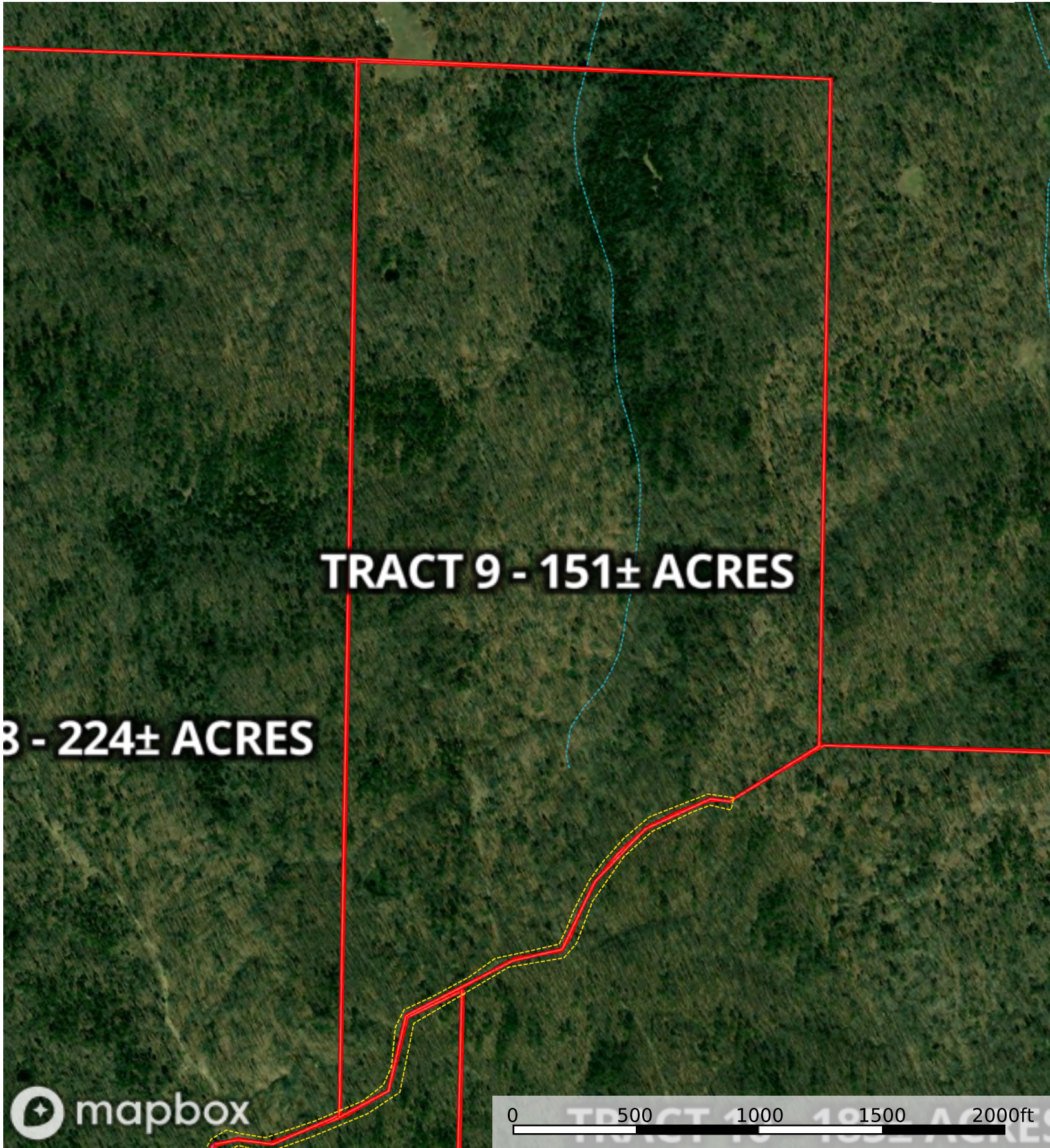
--- Road / Trail    □ Boundary    -.-.- Stream, Intermittent    — River/Creek    ■ Water Body





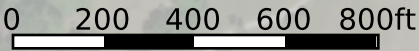
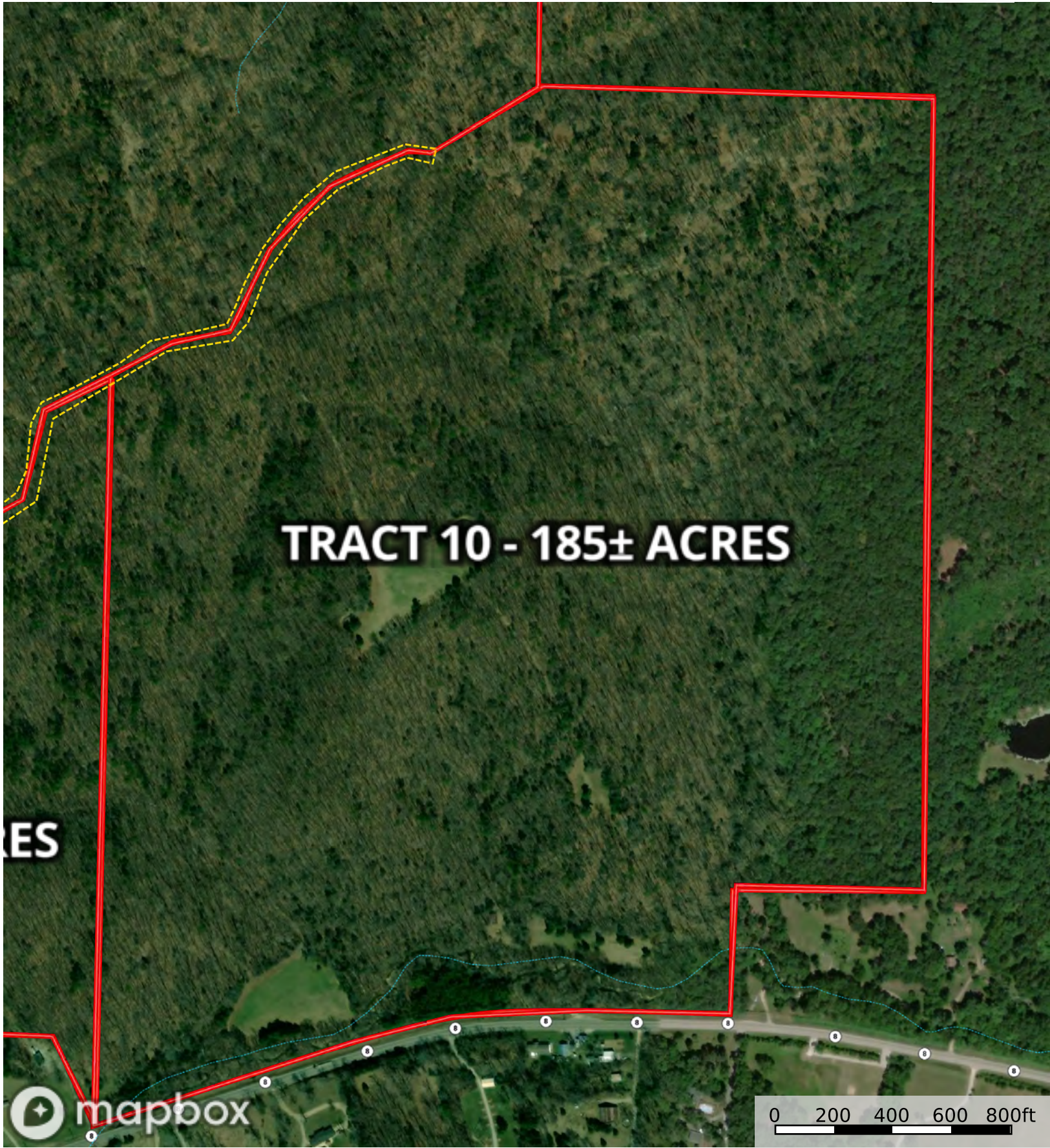
--- Road / Trail    □ Boundary    - - - - - Stream, Intermittent    — River/Creek    ■ Water Body





--- Road / Trail    □ Boundary    - - - - - Stream, Intermittent    — River/Creek    Water Body

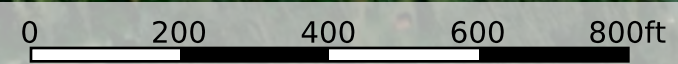
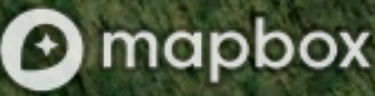




- Road / Trail
- Boundary
- - - Stream, Intermittent
- River/Creek
- Water Body



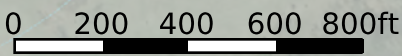
TRACT 11 - 30± ACRES



- Road / Trail
- Boundary
- Stream, Intermittent
- River/Creek
- Water Body



TRACT 12 - 130± ACRES



- Road / Trail
- Boundary
- Stream, Intermittent
- River/Creek
- Water Body