

406 Leflore Avenue
Belzoni, Mississippi 39038



\$250,000

Welcome home to this 3,585 sq. ft. home sitting on 3± scenic acres in Belzoni, MS. Inside, you'll find a large eat-in kitchen with an island that features a gas stove and oven, along with a stainless-steel refrigerator—plenty of space for cooking and gathering. The cozy den offers hardwood floors and a fireplace, making it the perfect spot to relax at the end of the day. You'll also have both a formal dining room and a formal living room for extra space when entertaining. The primary bedroom includes a private bath with a double vanity and walk-in shower, while the other two bedrooms share a convenient Jack-and-Jill bathroom. One of the highlights of this home is the spacious sunroom, complete with a built-in grill and direct access to the pool courtyard. The pool does need a new liner, but the setup has great potential for outdoor fun. With its large outdoor space and peaceful setting, this home is truly a sight to see. Call Bruce to view this Humphreys County home today!



**BRUCE
WEST**

ALC®, ASSOCIATE BROKER
ACCREDITED LAND CONSULTANT

Office: 662.441.2500

Cell: 662.873.3007

Bruce@TomSmithLand.com



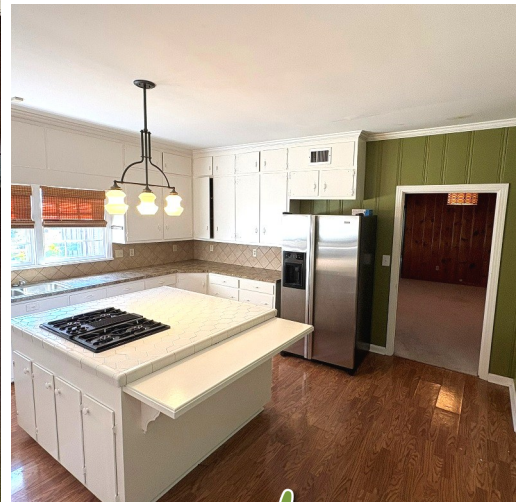
Expect More. Get More.

A Real Estate Expert You Can Trust

TomSmithLandandHomes.com

Information is believed to be accurate but not guaranteed.





A Real Estate Expert
You Can Trust!

BRUCE WEST

ALC®, ASSOCIATE BROKER
ACCREDITED LAND CONSULTANT

O: 662.441.2500 C: 662.873.3007

Bruce@TomSmithLand.com

TomSmithLandandHomes.com



Expect More. Get More.



Information is believed to be accurate but not guaranteed.



A Real Estate Expert You Can Trust!

BRUCE WEST

ALC®, ASSOCIATE BROKER
ACCREDITED LAND CONSULTANT

O: 662.441.2500 C: 662.873.3007

Bruce@TomSmithLand.com

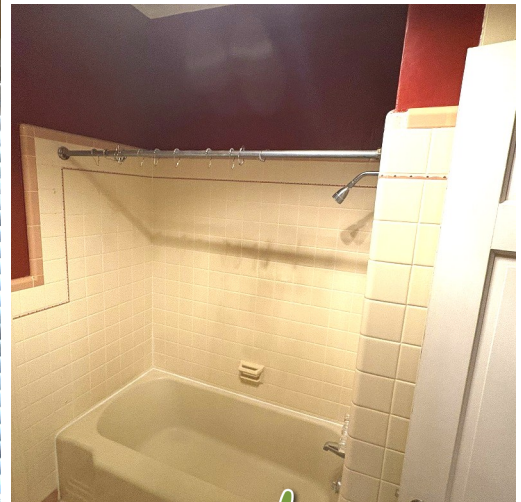
TomSmithLandandHomes.com



Expect More. Get More.



Information is believed to be accurate but not guaranteed.



A Real Estate Expert
You Can Trust!

BRUCE WEST

ALC®, ASSOCIATE BROKER
ACCREDITED LAND CONSULTANT

O: 662.441.2500 C: 662.873.3007

Bruce@TomSmithLand.com

TomSmithLandandHomes.com



Expect More. Get More.



Information is believed to be accurate but not guaranteed.



A Real Estate Expert You Can Trust!

BRUCE WEST

ALC®, ASSOCIATE BROKER
ACCREDITED LAND CONSULTANT

O: 662.441.2500 C: 662.873.3007

Bruce@TomSmithLand.com

TomSmithLandandHomes.com



Expect More. Get More.



Information is believed to be accurate but not guaranteed.



A Real Estate Expert You Can Trust!

BRUCE WEST

ALC®, ASSOCIATE BROKER
ACCREDITED LAND CONSULTANT

O: 662.441.2500 C: 662.873.3007

Bruce@TomSmithLand.com

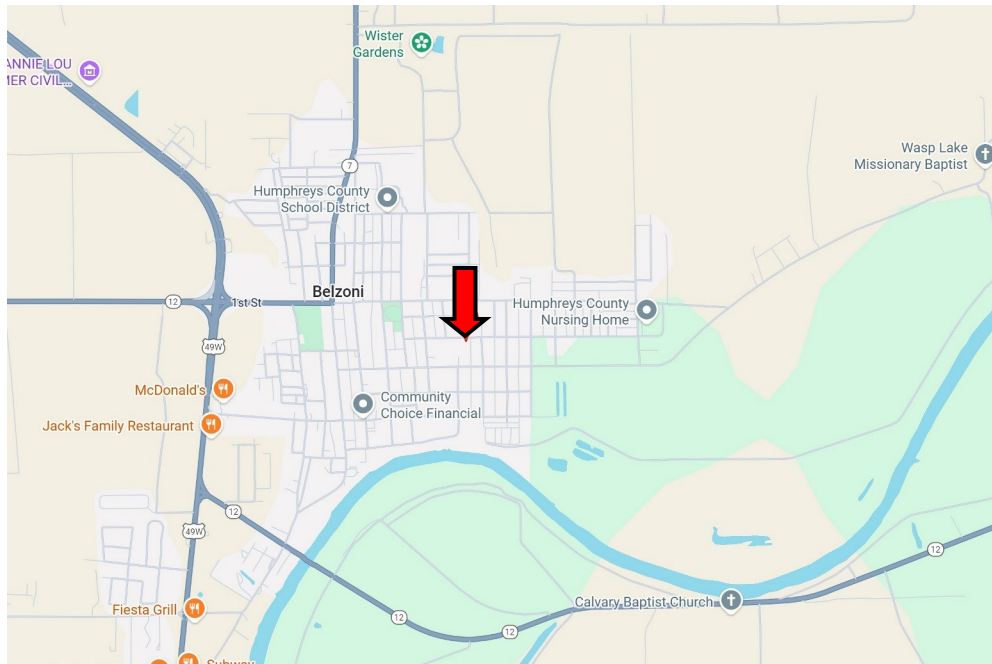
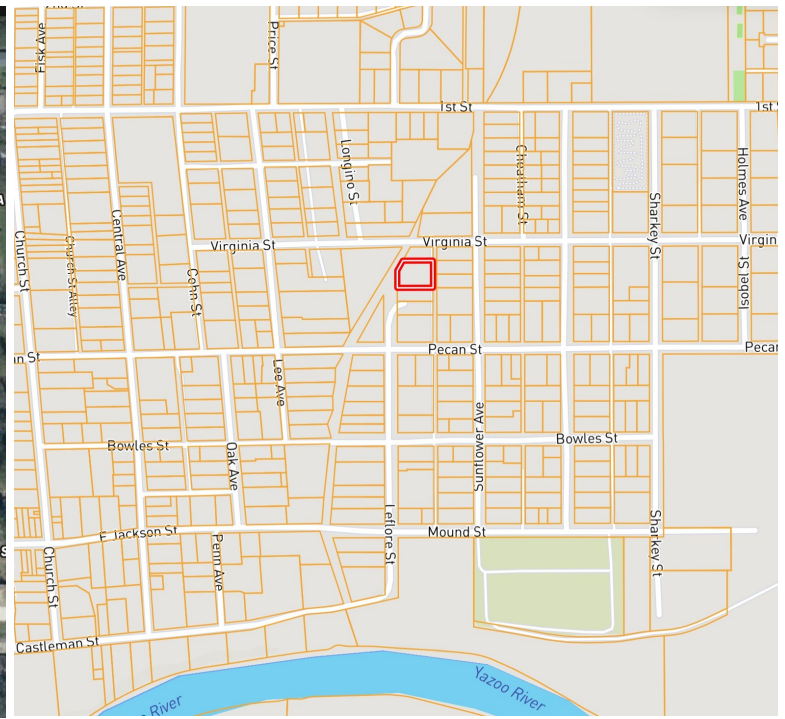
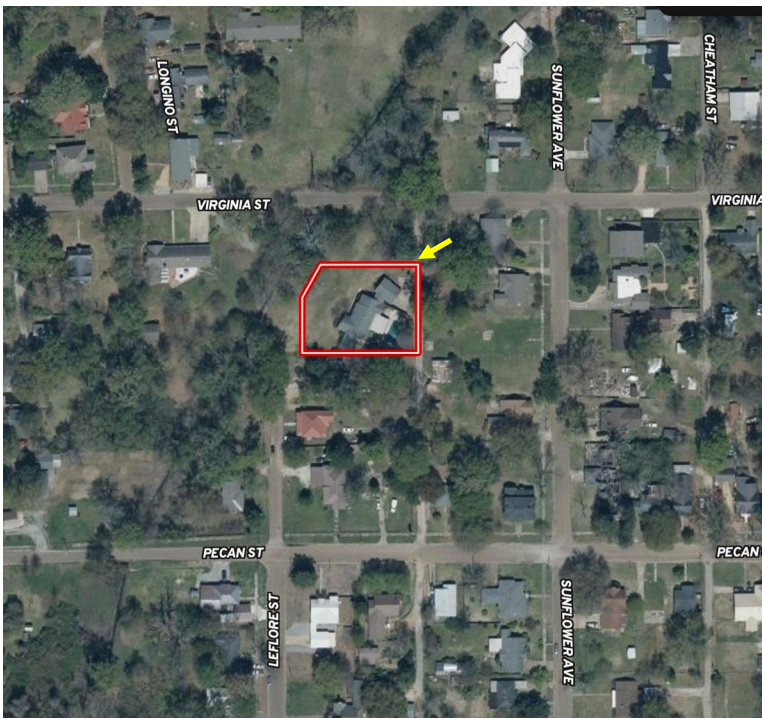
TomSmithLandandHomes.com



Expect More. Get More.



Information is believed to be accurate but not guaranteed.



land id. MAP LINK

Directions from Hwy 12 and Hwy 49W in Belzoni, MS: Turn onto Hwy 49W and travel North for 0.6 miles. Turn right onto 1st Street and travel 0.8 miles. Turn right onto Longino Street and then take a left onto Virginia St. After 167 feet, the home will be on your right at the corner of Virginia and Leflore Avenue.
406 Leflore Avenue
Belzoni, MS 39038—
Google Map Link



BRUCE WEST

ALC®, ASSOCIATE BROKER
 ACCREDITED LAND CONSULTANT

Office: 662.441.2500
 Cell: 662.873.3007

Bruce@TomSmithLand.com



Expect More. Get More.

A Real Estate Expert You Can Trust

TomSmithLandandHomes.com

Information is believed to be accurate but not guaranteed.

