

5± Acre Residential Lot

Sie Jenkins Road

Bogalusa/Washington Parish/LA



\$35,000



Expect More. Get More.

**ROBERT
RITCHIE**
REALTOR®

Office: 601.898.2772

Cell: 985.750.2968

RRitchie@TomSmithLand.com

**A Real Estate Expert
You Can Trust!**



TomSmithLandandHomes.com

Office: 601.898.2772

Property Information

Location:

- Sie Jenkins Road
- 10 minutes from Bogalusa, LA

Coordinates:

- 30.75745, -89.95945

Property Use:

- Residential
- Investment
- Hobby Farm

Property Highlights

- 5± Acres
- Plainview area between Highway 60 and Highway 439 on Sie Jenkins Road
- Wooded lot allows you to carve out your new home site
- Power already on property
- School Districts: Enon Elementary School, Franklinton Junior High School and Franklinton High School
- 10 minutes from Bogalusa with shopping and amenities

**ROBERT
RITCHIE**
REALTOR®

Office: 601.898.2772
Cell: 985.750.2968

RRitchie@TomSmithLand.com

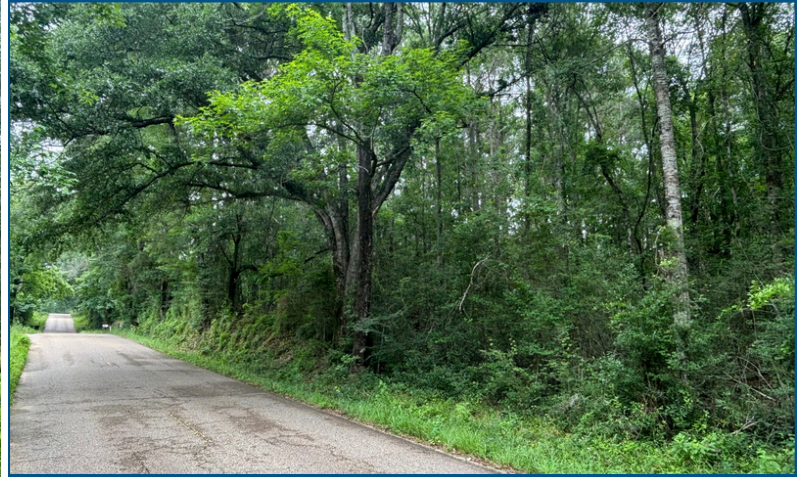
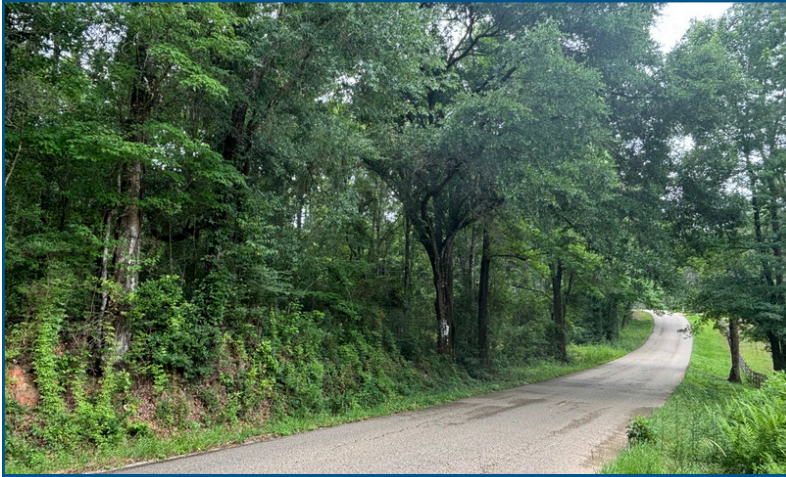


Expect More. Get More.

The Property

5± Acres

Discover the perfect blend of privacy and convenience on this beautiful 5± acre tract on Sie Jenkins Road in Washington Parish. With electricity already on site, mixed timber, and high, well-drained ground that slopes gently toward the front and rear of the property, this lot is ready for your vision. Whether you're planning a homestead, hobby farm, or secluded homesite, you'll enjoy the peaceful country feel while being just minutes from town. Plenty of room to build, grow, and enjoy the outdoors.



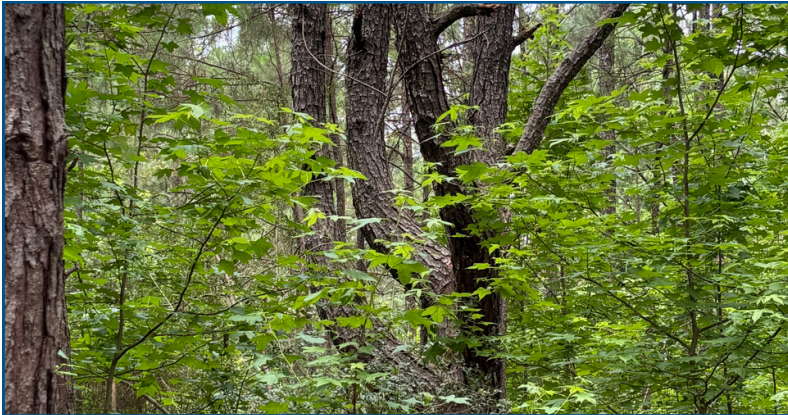
**ROBERT
RITCHIE**
REALTOR®

Office: 601.898.2772
Cell: 985.750.2968

RRitchie@TomSmithLand.com



The Property



**ROBERT
RITCHIE**
REALTOR®

Office: 601.898.2772
Cell: 985.750.2968

RRitchie@TomSmithLand.com



Expect More. Get More.

The Property



**ROBERT
RITCHIE**
REALTOR®

Office: 601.898.2772
Cell: 985.750.2968

RRitchie@TomSmithLand.com



Expect More. Get More.

Aerial Photos



**ROBERT
RITCHIE**
REALTOR®

Office: 601.898.2772
Cell: 985.750.2968

RRitchie@TomSmithLand.com

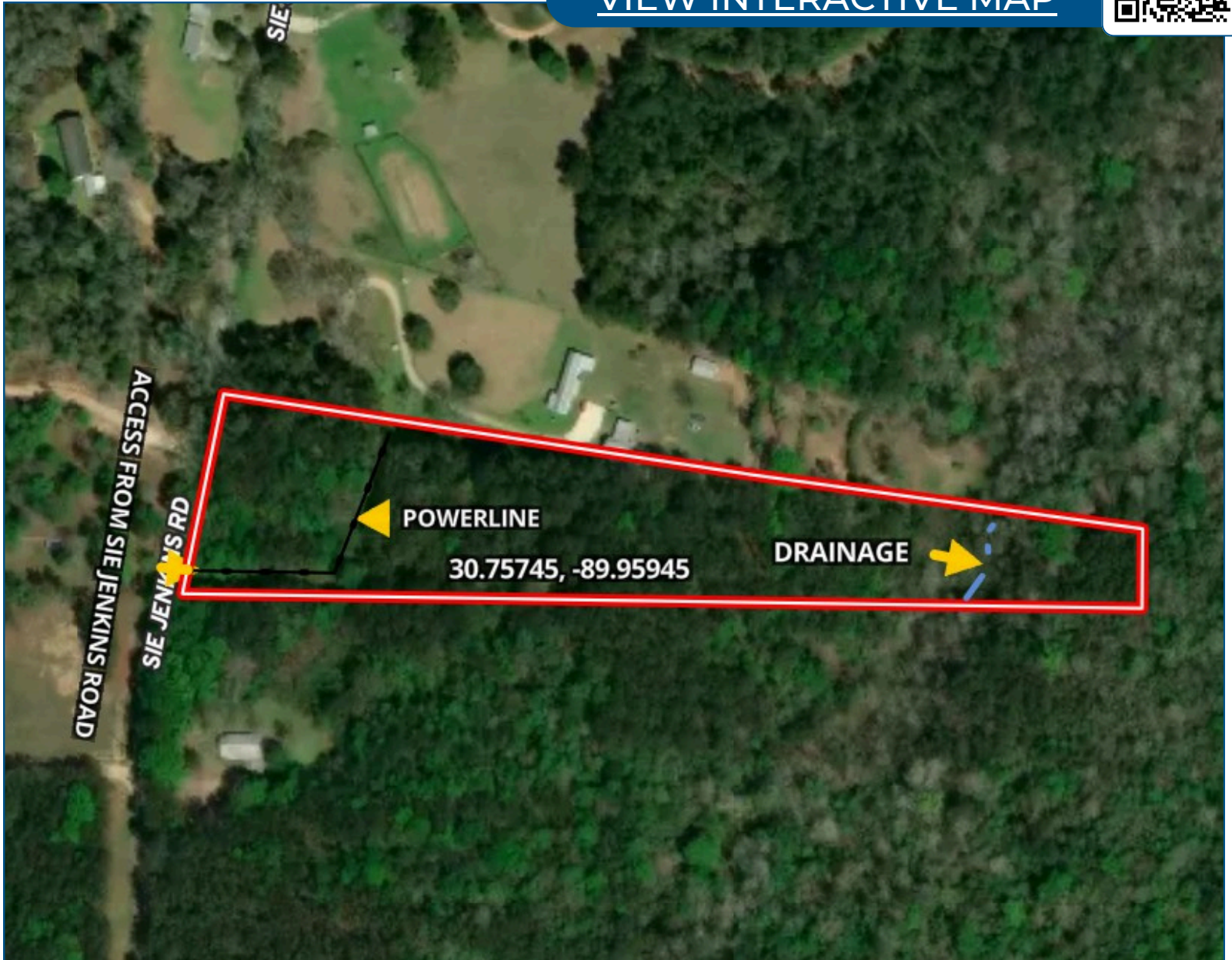


Expect More. Get More.

Aerial Map



[VIEW INTERACTIVE MAP](#)



**ROBERT
RITCHIE**
REALTOR®

Office: 601.898.2772
Cell: 985.750.2968

RRitchie@TomSmithLand.com

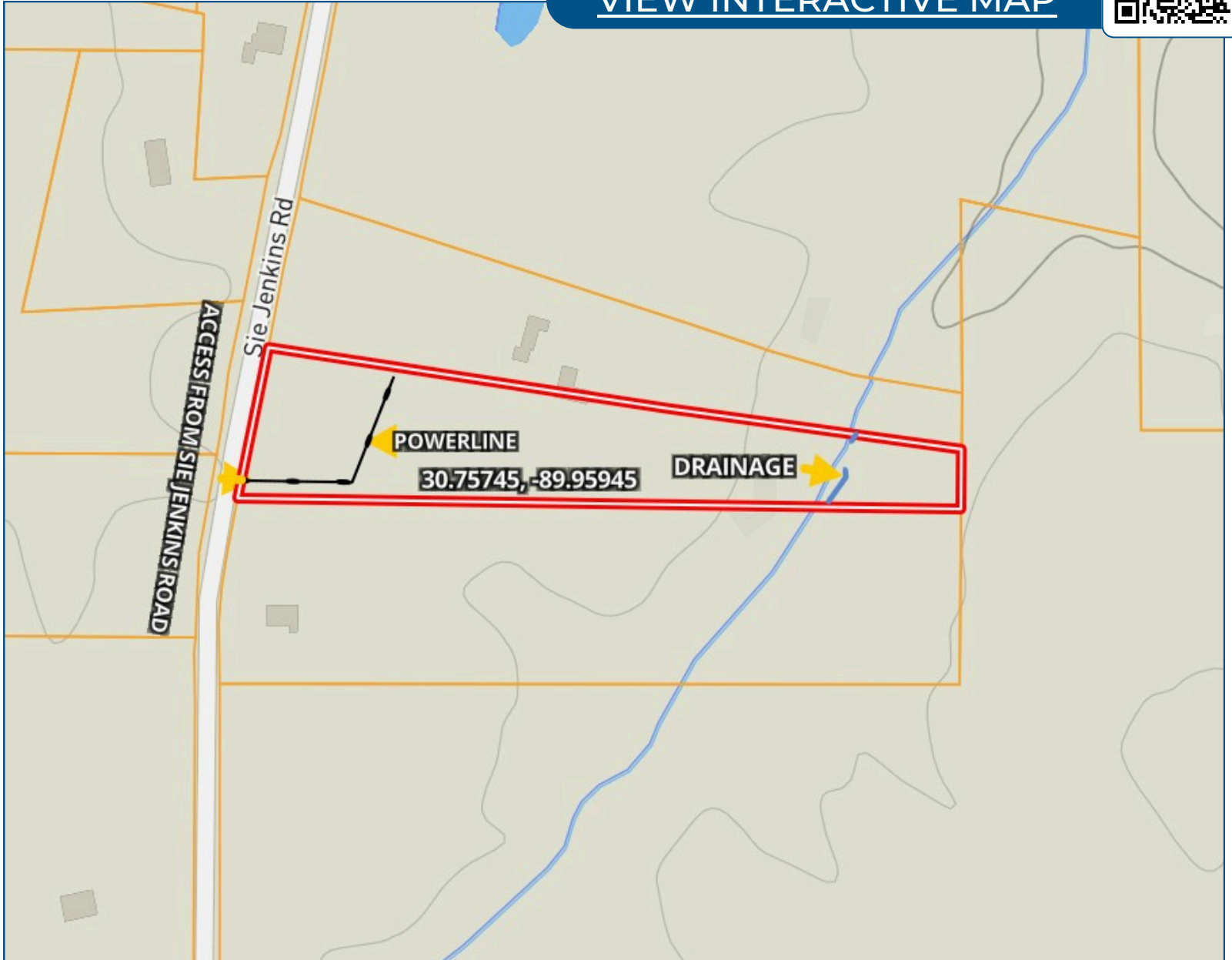


Expect More. Get More.

Ownership Map



[VIEW INTERACTIVE MAP](#)



**ROBERT
RITCHIE**
REALTOR®

Office: 601.898.2772
Cell: 985.750.2968

RRitchie@TomSmithLand.com

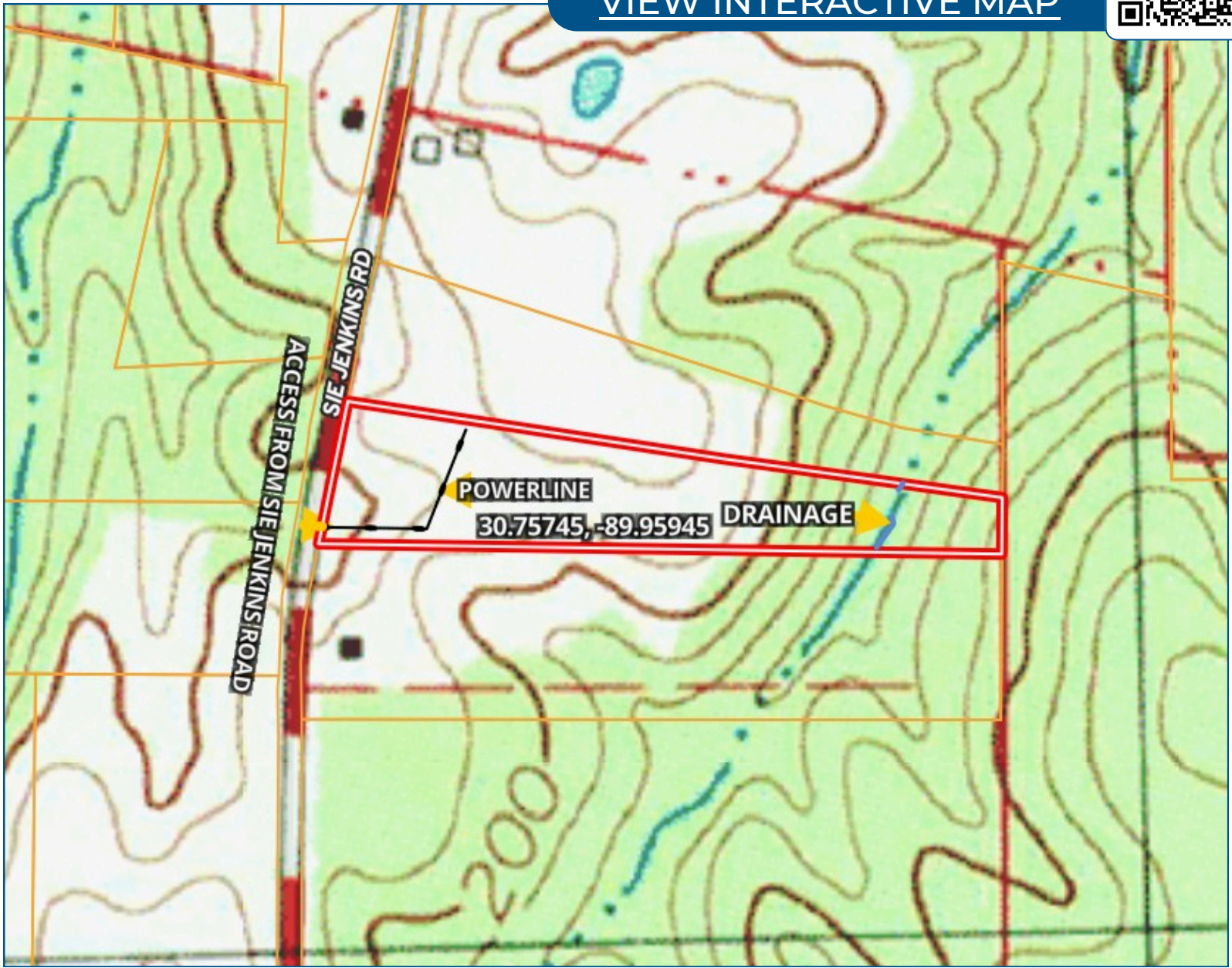


Expect More. Get More.

Topo Map



[VIEW INTERACTIVE MAP](#)



**ROBERT
RITCHIE**
REALTOR®

Office: 601.898.2772
Cell: 985.750.2968

RRitchie@TomSmithLand.com

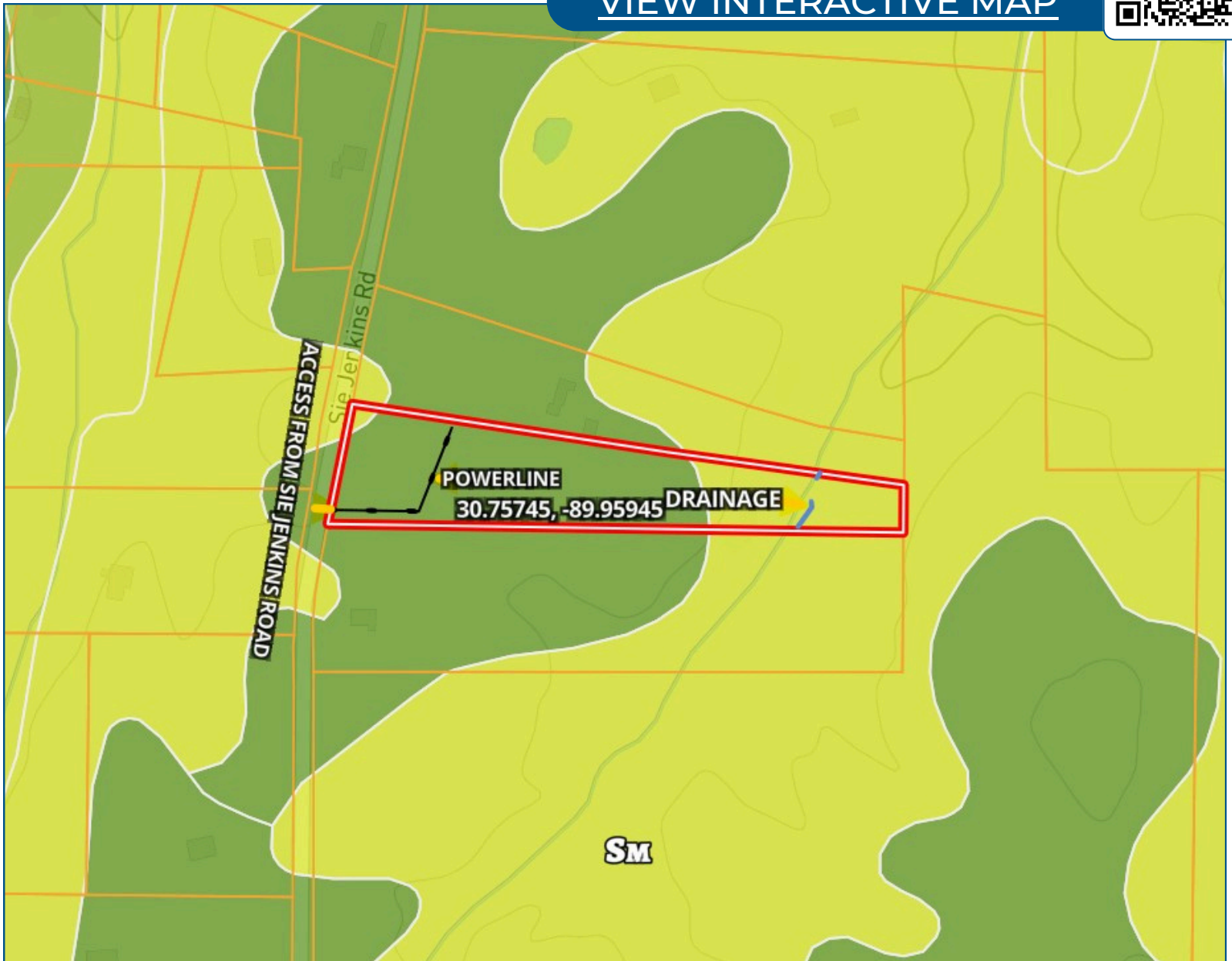


Expect More. Get More.

Soil Map



[VIEW INTERACTIVE MAP](#)



**ROBERT
RITCHIE**
REALTOR®

Office: 601.898.2772
Cell: 985.750.2968

RRitchie@TomSmithLand.com

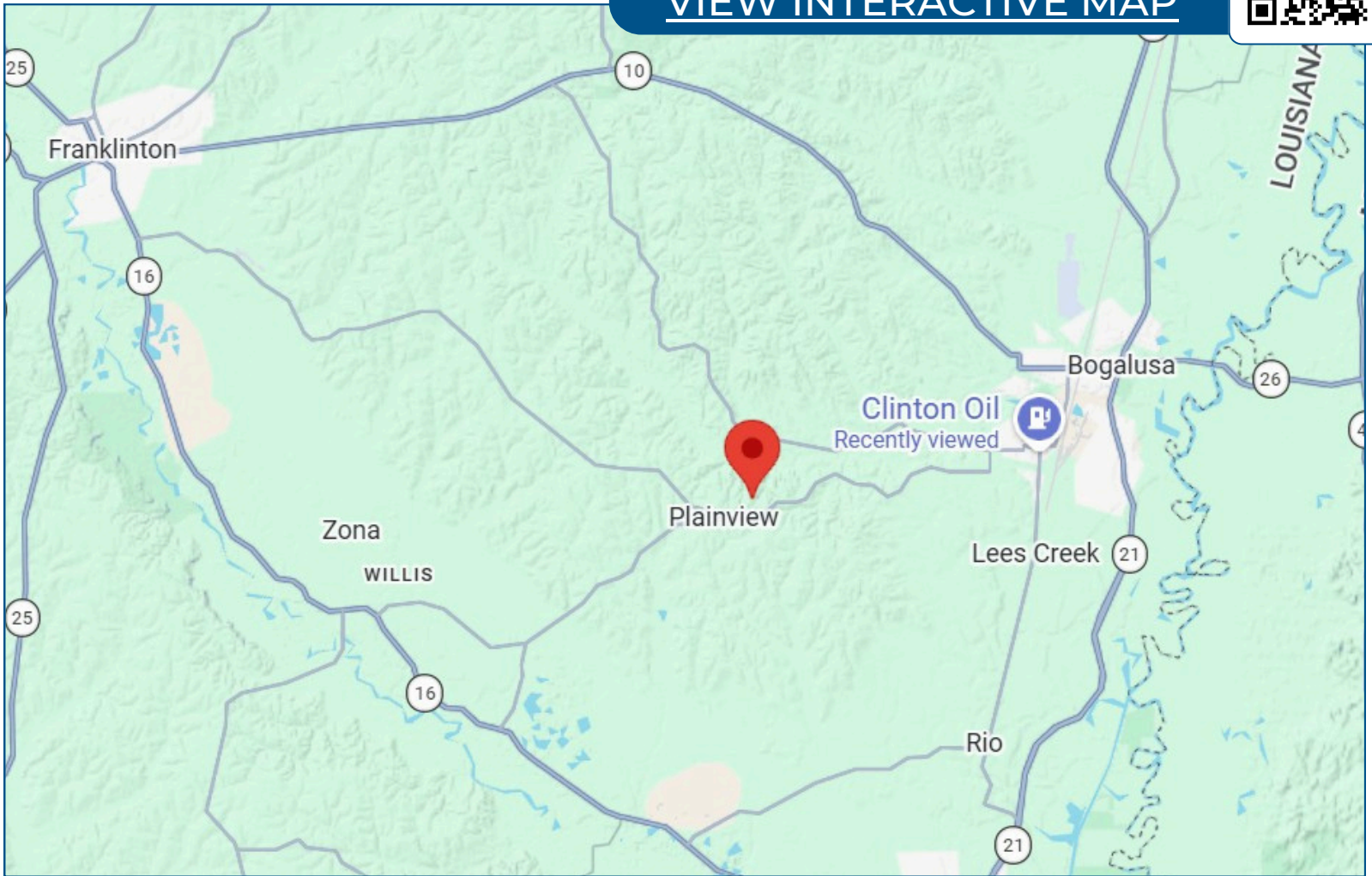


Expect More. Get More.

Directional Map



[VIEW INTERACTIVE MAP](#)



From the corner of Avenue F and West 10th Street in Bogalusa, head toward Ave G for 0.3 miles, turn left onto Avenue K and go 436 ft, turn right onto LA-60 W/W 10th Street for 0.6 miles, then continue onto LA-439 W for 4.6 miles and turn left onto Sie Jenkins Road, the destination will be on the left.

**ROBERT
RITCHIE**
REALTOR®

Office: 601.898.2772
Cell: 985.750.2968

RRitchie@TomSmithLand.com



Expect More. Get More.