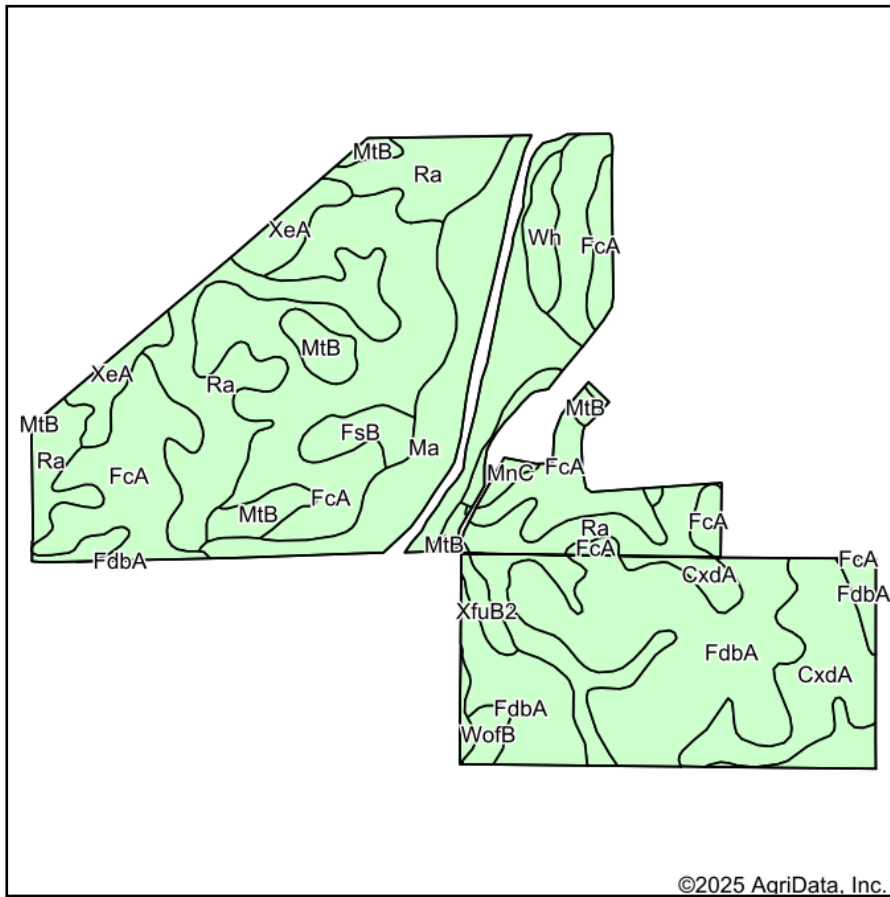
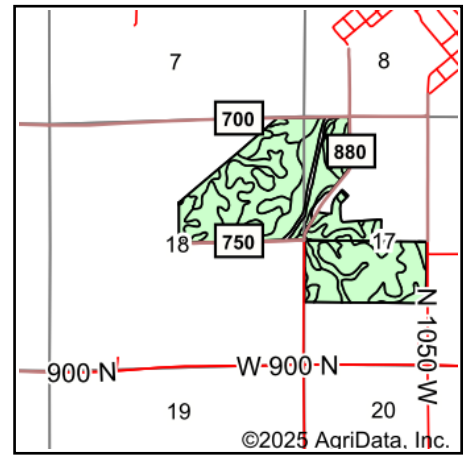


Soils Map



Soils data provided by USDA and NRCS.



State: **Indiana**
 County: **Clinton**
 Location: **18-20N-2W**
 Township: **Perry**
 Acres: **249.95**
 Date: **12/18/2025**



Maps Provided By:



© AgriData, Inc. 2025

www.AgriDataInc.com



Area Symbol: IN011, Soil Area Version: 28
 Area Symbol: IN023, Soil Area Version: 29

Code	Soil Description	Acres	Percent of field	Soil Drainage	Non-Irr Class *c	Corn Bu	Soybeans Bu	Winter wheat Bu
FcA	Fincastle silt loam, Tipton Till Plain, 0 to 2 percent slopes	65.86	26.6%	Somewhat poorly drained	IIw	168	62	65
FdbA	Fincastle silt loam, Tipton Till Plain, 0 to 2 percent slopes	49.34	19.7%	Somewhat poorly drained	IIw	168	62	65
Ra	Ragsdale silt loam, 0 to 2 percent slopes	41.57	16.6%	Poorly drained	IIw	185	56	75
Ma	Mahalasville silty clay loam, 0 to 2 percent slopes	30.11	12.0%	Poorly drained	IIw	175	61	58
CxdA	Cyclone silty clay loam, 0 to 2 percent slopes	26.45	10.6%	Poorly drained	IIw	185	65	75
MtB	Miami-Crosby silt loams, 2 to 6 percent slopes	15.03	6.0%	Moderately well drained	Ile	147	50	65
XeA	Xenia silt loam, 0 to 2 percent slopes	7.54	3.0%	Moderately well drained	Iw	154	54	69
FsB	Fox silt loam, 2 to 6 percent slopes	4.10	1.6%	Well drained	Ile	100	35	50
Wh	Whitaker silt loam, 0 to 2 percent slopes	3.78	1.5%	Somewhat poorly drained	IIw	155	51	70
MnC	Miami silt loam, 6 to 12 percent slopes	2.58	1.0%	Moderately well drained	IIle	138	48	61
XfuB2	Miami-Rainsville complex, 2 to 6 percent slopes, eroded	1.84	0.7%	Moderately well drained	Ile	141	49	63
WofB	Williamstown-Crosby silt loams, 2 to 4 percent slopes	1.75	0.7%	Moderately well drained	Ile	145	46	65
Weighted Average					1.98	169.8	59.3	66.8

*c: Using Capabilities Class Dominant Condition Aggregation Method

Soils data provided by USDA and NRCS.