

# 2.87± Acre Lot in Bolivar County

**Laughlin Road, Cleveland, MS 38732**

**\$72,000**



## Are you dreaming of building your forever home?

If you've been searching for the perfect location in Bolivar County, MS, your search ends here! This 2.87± acre lot on Laughlin Road in Cleveland offers an ideal spot to create your dream home. It's situated in a fantastic neighborhood, making it the perfect setting for your new space. Ready to make it yours and start building?

Call Anthony Steen today!



**ANTHONY  
STEEN**

REALTOR®

Office: 601.898.2772

Cell: 662.645.5151

[Anthony@TomSmithLand.com](mailto:Anthony@TomSmithLand.com)



Expect More. Get More.

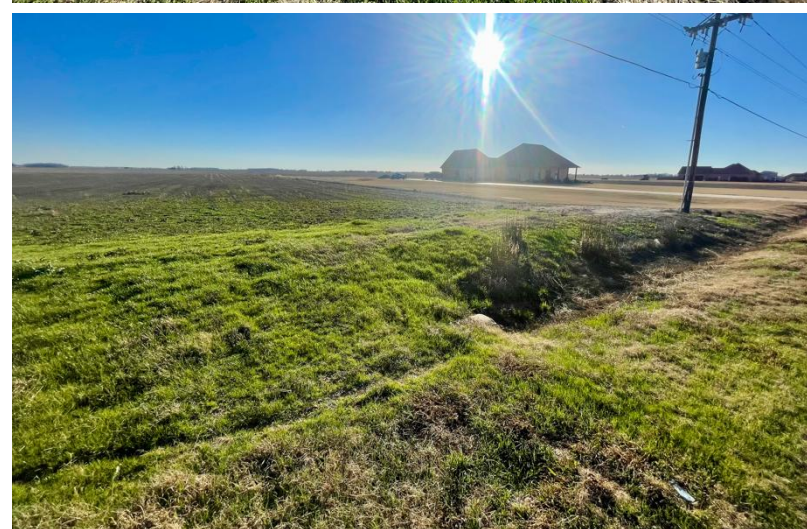
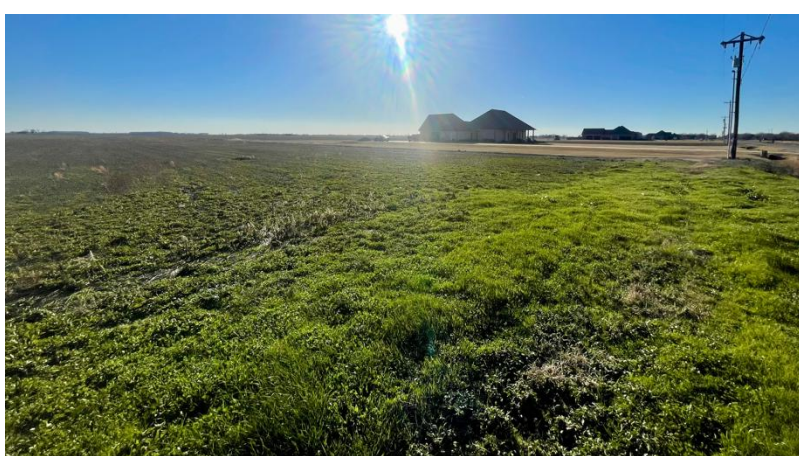
## A Real Estate Expert You Can Trust

[TomSmithLandandHomes.com](http://TomSmithLandandHomes.com)

Information is believed to be accurate but not guaranteed.







**A Real Estate Expert**  
*You Can Trust!*

**ANTHONY STEEN**

REALTOR®

O: 601.898.2772 C: 662.645.5151

Anthony@TomSmithLand.com

TomSmithLandandHomes.com



Expect More. Get More.



Information is believed to be accurate but not guaranteed.





**A Real Estate Expert**  
*You Can Trust!*

**ANTHONY STEEN**  
REALTOR®

O: 601.898.2772 C: 662.645.5151

[Anthony@TomSmithLand.com](mailto:Anthony@TomSmithLand.com)

[TomSmithLandandHomes.com](http://TomSmithLandandHomes.com)



Expect More. Get More.

Information is believed to be accurate but not guaranteed.





# AERIAL MAP | [Click for the Interactive Map](#)



**A Real Estate Expert**  
*You Can Trust!*

**ANTHONY STEEN**  
REALTOR®

O: 601.898.2772 C: 662.645.5151

Anthony@TomSmithLand.com

TomSmithLandandHomes.com

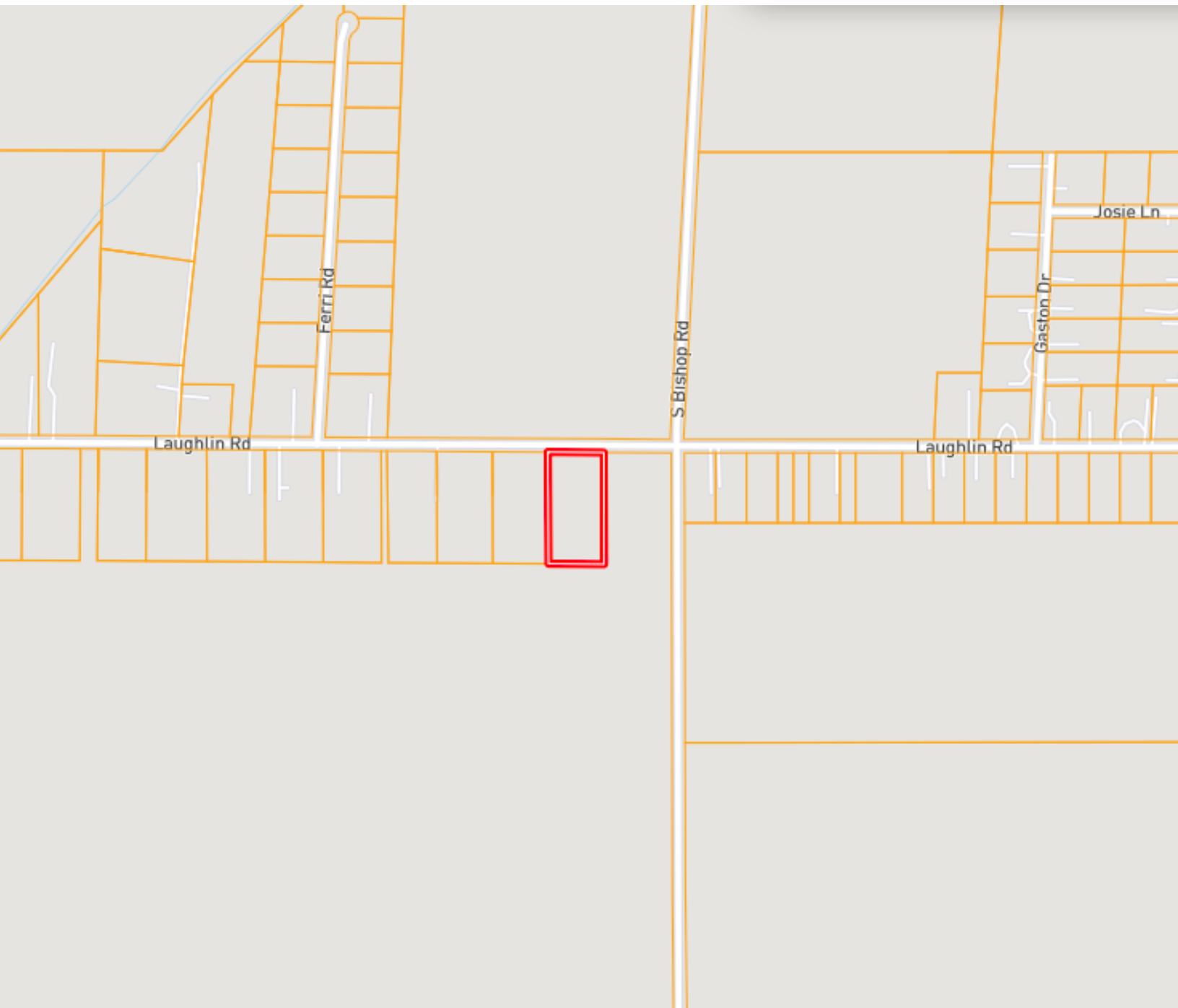


Expect More. Get More.



Information is believed to be accurate but not guaranteed.

# OWNERSHIP MAP



**A Real Estate Expert**  
*You Can Trust!*

**ANTHONY STEEN**  
REALTOR®

O: 601.898.2772 C: 662.645.5151

Anthony@TomSmithLand.com

TomSmithLandandHomes.com

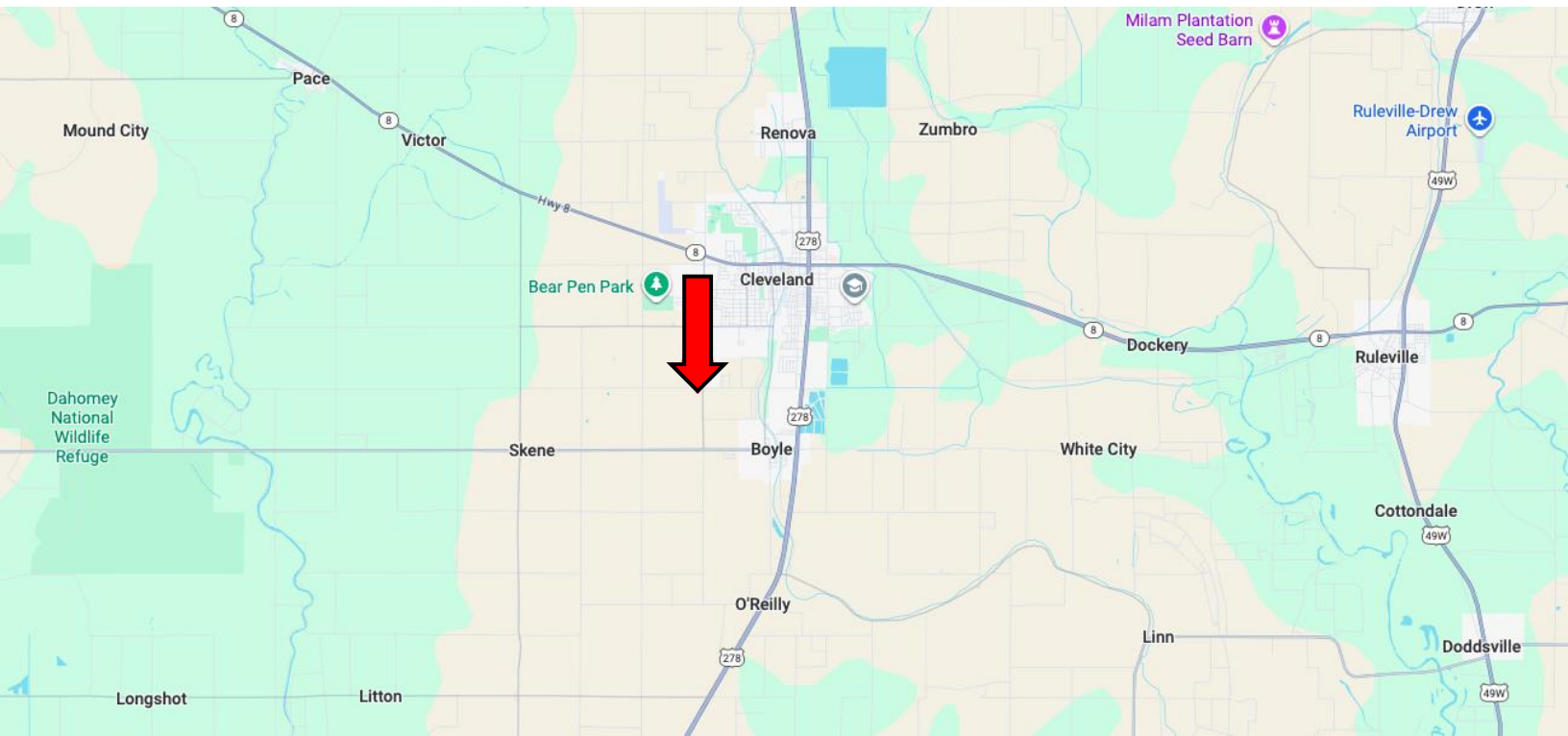


Expect More. Get More.



Information is believed to be accurate but not guaranteed.

# DIRECTIONAL MAP



**Address:** Laughlin Road, Cleveland, MS 38732

## **Directions from US-61 & MS-8, Cleveland, MS:**

Travel south on US-61 S for 2.0 miles.

Turn right onto Laughlin Road for 0.7 miles. Continue straight to stay on Laughlin Road. After 1.0 mile, the land will be on the left. [Google Maps Link](#)



**ANTHONY  
STEEN**

REALTOR®

Office: 601.898.2772

Cell: 662.645.5151

[Anthony@TomSmithLand.com](mailto:Anthony@TomSmithLand.com)



Expect More. Get More.

**A Real Estate Expert You Can Trust**

[TomSmithLandandHomes.com](http://TomSmithLandandHomes.com)

Information is believed to be accurate but not guaranteed.

