

33.8± Acres

Calhoun County, MS

Pittsboro, MS 38951



Preferred
BROKER

\$85,850



Expect More. Get More.

TomSmithLandandHomes.com

Office: 601.898.2772

Property Information

Location:

- Pittsboro, MS 38951

Property Use:

- Recreational
- Hunting

Coordinates:

- 33.92645, -89.27665

Property Highlights

- 33.8± Acres
- Abundant Game
- Gravel Road
- Vegetation That Provides Dense Cover



Expect More. Get More.

**BRUCE
WEST**

MANAGING BROKER, ALC®

Office: 662.771.1101

Cell: 662.873.3007

Bruce@TomSmithLand.com

**A Real Estate Expert
You Can Trust!**



The Property

33.8± Acres

Located in the secluded wilderness of Calhoun County, this 33.8± acre tract offers a tranquil retreat accessible via a rarely traveled gravel road. Replanted in 2019, the property features thriving vegetation that provides dense cover, ideal for creating deer bedding areas. Deer tracks were evident along the road system traversing the land, serving as a promising sign of abundant game. This remote tract presents an unmatched opportunity for those seeking an isolated haven for hunting pursuits. Give Bruce a call for your private showing today!



**BRUCE
WEST**
REALTOR®

Office: 662.771.1101
Cell: 662.873.3007

Bruce@TomSmithLand.com



Expect More. Get More.

The Property



**BRUCE
WEST**
REALTOR®

Office: 662.771.1101
Cell: 662.873.3007

Bruce@TomSmithLand.com



Expect More. Get More.

Aerial Map

[VIEW INTERACTIVE MAP](#)



**BRUCE
WEST**
REALTOR®

Office: 662.771.1101
Cell: 662.873.3007

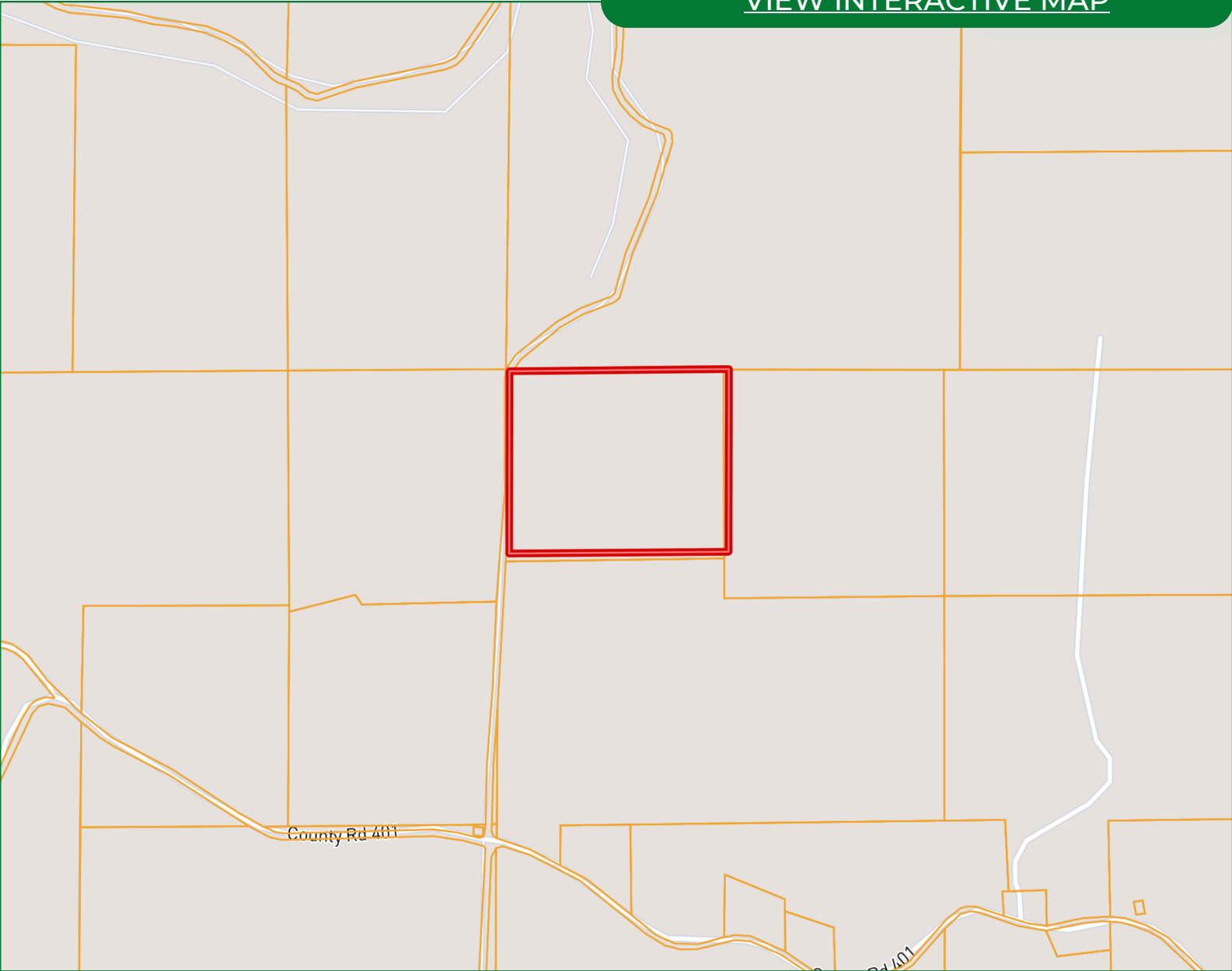
Bruce@TomSmithLand.com



Expect More. Get More.

Ownership Map

[VIEW INTERACTIVE MAP](#)



**BRUCE
WEST**
REALTOR®

Office: 662.771.1101
Cell: 662.873.3007

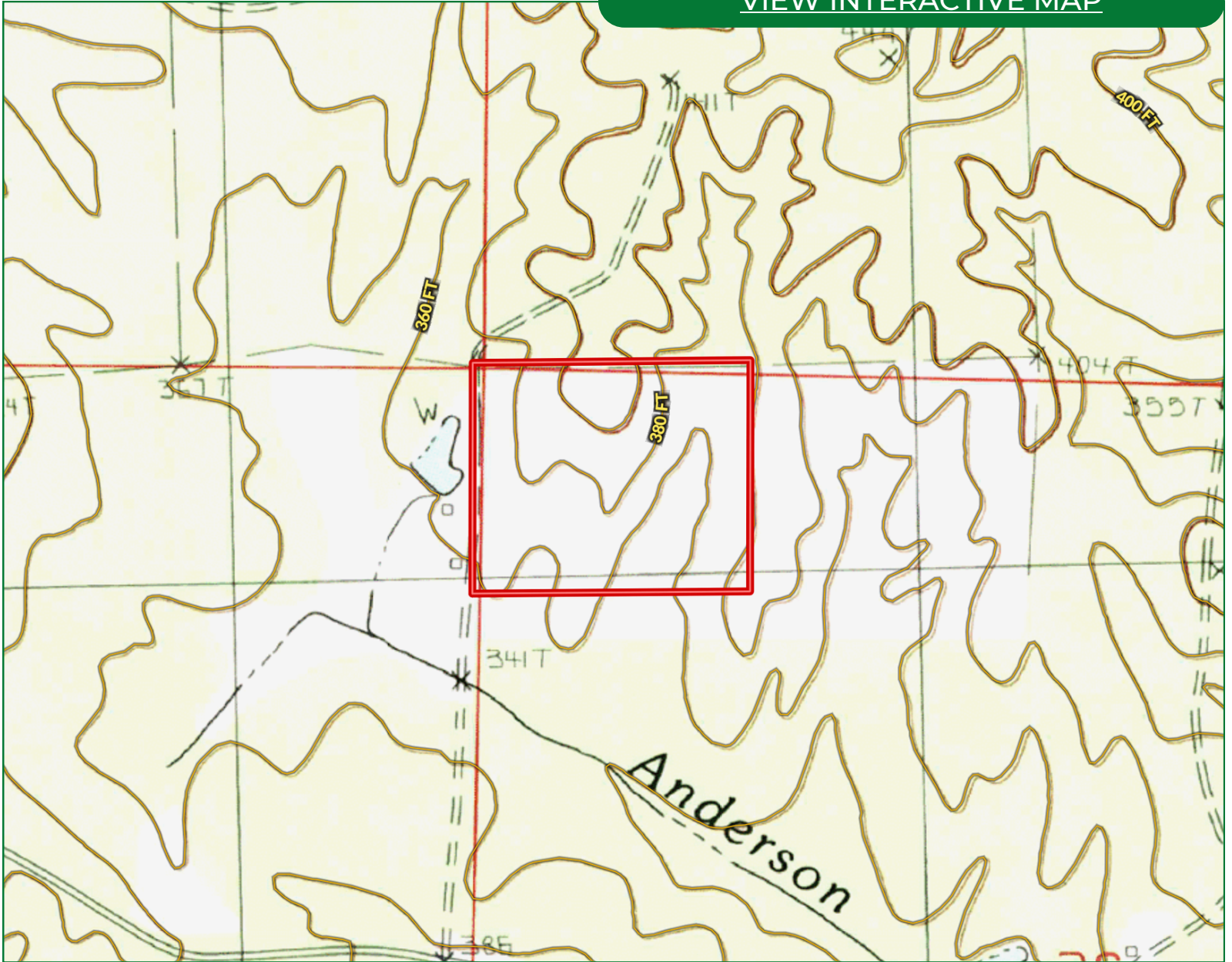
Bruce@TomSmithLand.com



Expect More. Get More.

Topo Map

[VIEW INTERACTIVE MAP](#)



**BRUCE
WEST**
REALTOR®

Office: 662.771.1101
Cell: 662.873.3007

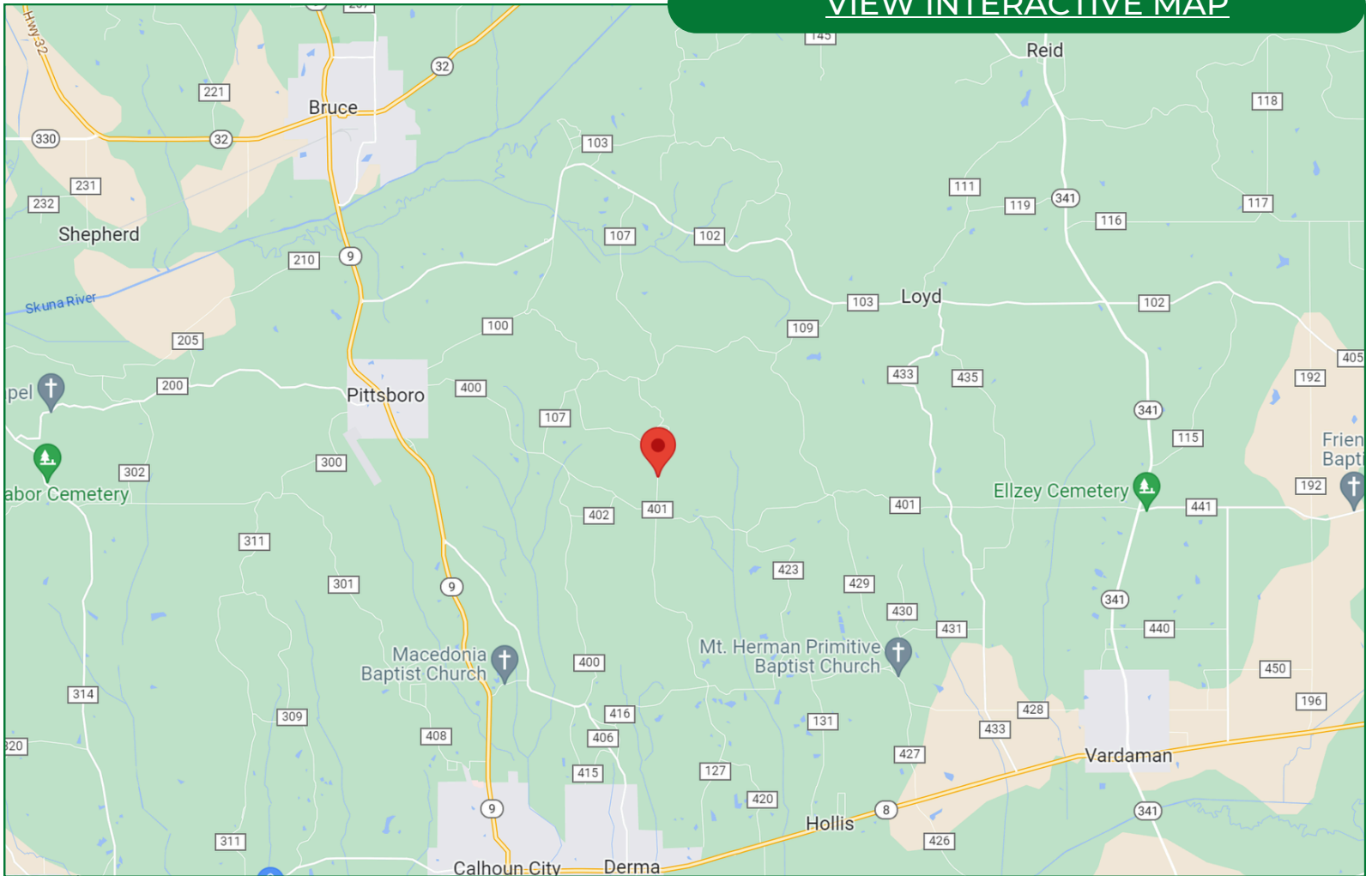
Bruce@TomSmithLand.com



Expect More. Get More.

Directional Map

[VIEW INTERACTIVE MAP](#)



Directions from Hwy 9 and CR 400 in Pittsboro, MS:

Travel CR 400 for 2.4 miles. Turn left onto CR 401 and travel 1.2 miles. Turn left onto CR 419. After 0.4 miles, the property will be on the right.

**BRUCE
WEST**
REALTOR®

Office: 662.771.1101
Cell: 662.873.3007

Bruce@TomSmithLand.com

