

Home in Rankin County

3922 Old Brandon Road

Pearl, MS 39208



\$150,000



**Tom
Smith
LAND AND
HOMES**

Expect More. Get More.

Property Information

Location:

- 3922 Old Brandon Road, Pearl, MS, 39208

Property Use:

- Residential
- Investment

Coordinates:

- 32.2905, -90.09285

Property Highlights

- 0.28± Acres
- 1,092± Sq Ft
- 3 Bedrooms, 1 Bathroom
- Storage Building
- Screened-In Front Porch
- Above-Ground Pool



**JAKE
CALLENDER**
REALTOR®

Office: 601.898.2772
Cell: 601.955.2559
Jake@TomSmithLand.com



Expect More. Get More.

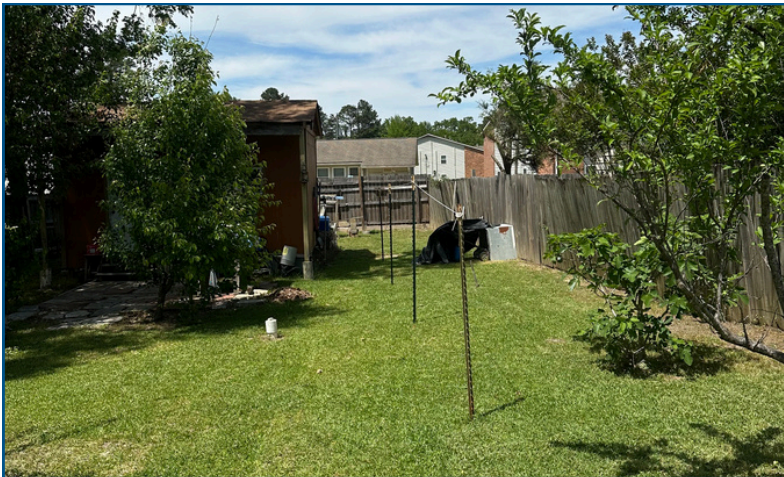
**A Real Estate Expert
You Can Trust!**



The Residence

1,092± Sq Ft

This charming 3-bedroom, 1-bathroom home in Pearl offers both comfort and convenience, ideally located just minutes from the Jackson-Medgar Wiley Evers International Airport and nearby grocery stores. With 1,092± square feet of living space, this home provides a functional layout perfect for a first-time buyer, downsizing, or an investment opportunity. The kitchen features extra-large countertops, offering ample space for cooking, entertaining, and everyday use. A screened-in front porch creates a relaxing space to enjoy your morning coffee or unwind in the evenings. Outside, the property features a greenhouse for gardening enthusiasts, along with two pear trees, one fig tree, and a herb garden that includes peppermint, parsley, and lemon mint. A storage building offers added convenience, and an above-ground pool provides the perfect spot to cool off and entertain during the warmer months. With its great location and unique outdoor features, this home is one you won't want to miss.



**JAKE
CALLENDER**
REALTOR®

Office: 601.898.2772
Cell: 601.955.2559

Jake@TomSmithLand.com



Expect More. Get More.

The Residence



**JAKE
CALLENDER**
REALTOR®

Office: 601.898.2772

Cell: 601.955.2559

Jake@TomSmithLand.com



Expect More. Get More.

The Property



**JAKE
CALLENDER**
REALTOR®

Office: 601.898.2772

Cell: 601.955.2559

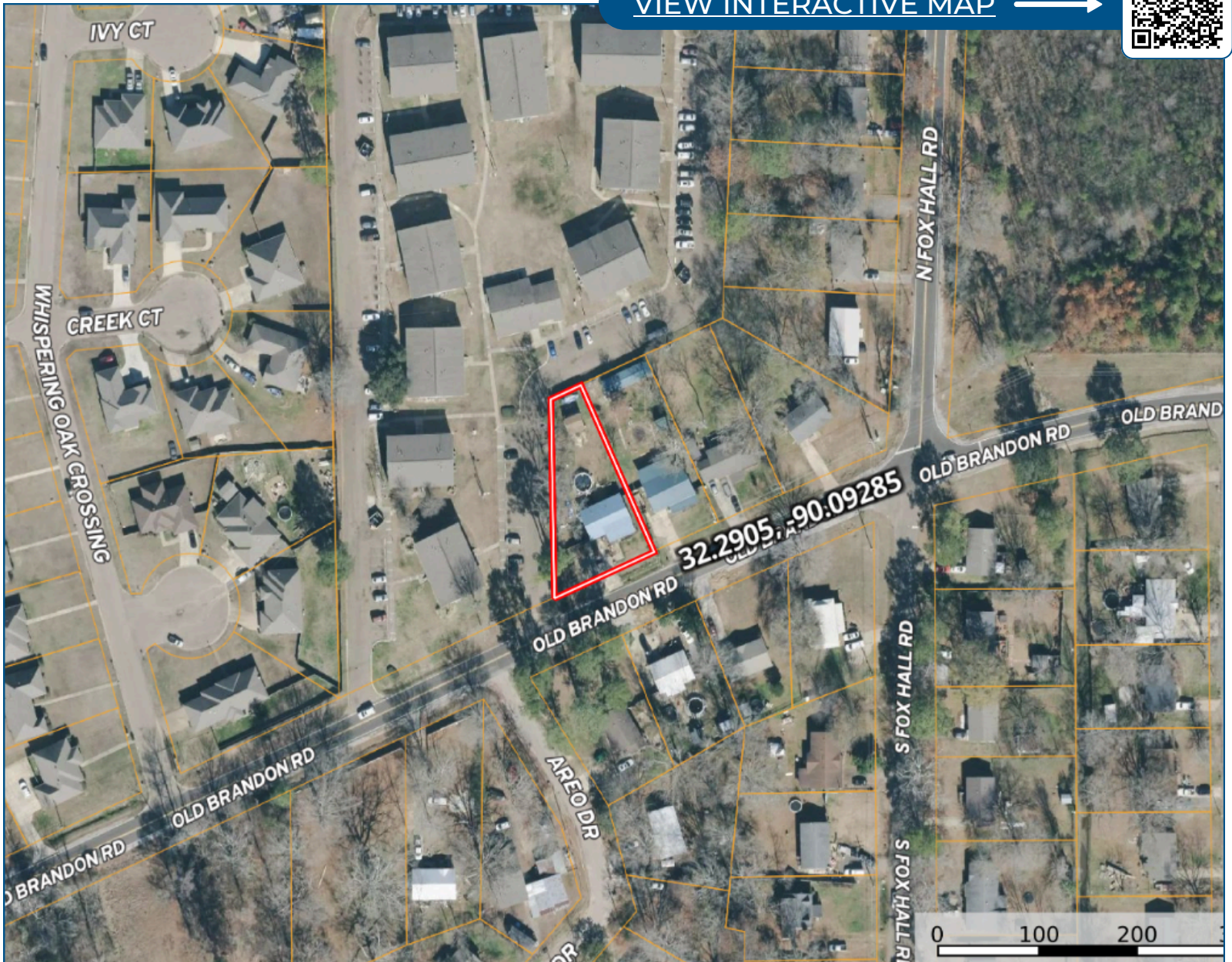
Jake@TomSmithLand.com



Expect More. Get More.

Aerial Map

VIEW INTERACTIVE MAP →



**JAKE
CALLENDER**
REALTOR®

Office: 601.898.2772
Cell: 601.955.2559

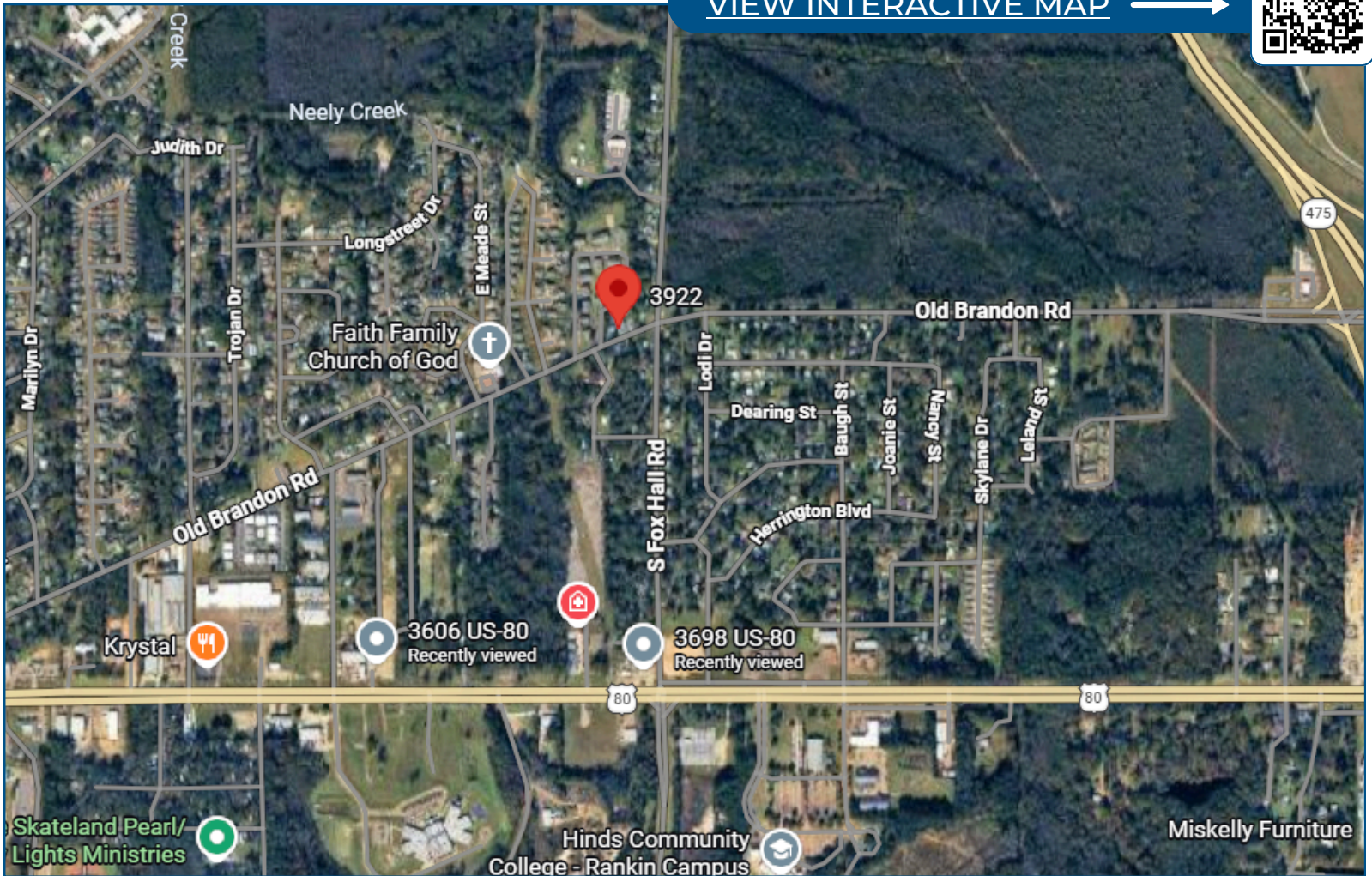
Jake@TomSmithLand.com



Expect More. Get More.

Directional Map

VIEW INTERACTIVE MAP →



From the intersection of Hwy 80 and Paul Truitt Lane: Turn right onto Paul Truitt Lane and straight for 0.3 miles. Turn right onto Old Brandon Road and continue straight for 0.4 miles. The destination will be on your left.

**JAKE
CALLENDER**
REALTOR®

Office: 601.898.2772
Cell: 601.955.2559

Jake@TomSmithLand.com



Expect More. Get More.