



15± ACRES
HICKORY COUNTY, MO
\$150,000



SMALLTOWN
HUNTING PROPERTIES
& REAL ESTATESM



OFFICE (816) 577-5206 | WWW.SMALLTOWNPROPERTIES.COM

THE HICKORY 15

PROPERTY PROFILE

LOCATION:

- County Road 333
Polk, MO 65727
- Across from Lindley Creek
- Borders U.S. Army
Corps of Engineers Land
- Hickory County
- 0.5± Miles S of the Nearest
Pomme de Terre Boat Ramp
- 5± Miles SE of Pittsburg
- 19.7± Miles NE of Bolivar

PROPERTY USE:

- Recreational
- Hunting & Fishing
- Potential Home/Cabin Site

PROPERTY INFORMATION:

- 15± Private Acres
- Mostly Wooded
- Road Frontage

COORDINATES:

- 37.80975, -93.26845

TAX INFORMATION:

- 2025 Taxes: \$6.46



SMALLTOWN
HUNTING PROPERTIES
& REAL ESTATESM

KIX NELSON

LAND SPECIALIST

C: 417-841-7984

O: 816-577-5206

kix@smalltownproperties.com

4848 Main St. - Flora, MS 39701

smalltownproperties.com

Information is believed to be accurate but not guaranteed.

WELCOME TO THE HICKORY 15

WELCOME TO THE HICKORY 15 IN POLK, MISSOURI. This 15± acre tract in Hickory County offers a great setup for anyone looking for a recreational getaway near Pomme de Terre Lake. Located along County Road 333, the Hickory 15 gives you easy road access while still offering the privacy and seclusion people look for in a hunting, camping, and weekend-use property.

The land is mostly wooded, creating excellent cover for wildlife and plenty of room to explore. Whether you're looking for a place to hunt, hike, camp, ride trails, or simply get away from town, this tract checks all the boxes. The Hickory 15 also sits close to Lindley Creek and is within walking distance to the Pomme de Terre Lake area, giving you nearby access to fishing, boating, and additional outdoor recreation.



SMALLTOWN
HUNTING PROPERTIES
& REAL ESTATESM

KIX NELSON

LAND SPECIALIST

C: 417-841-7984

O: 816-577-5206

kix@smalltownproperties.com

4848 Main St. - Flora, MS 39701

smalltownproperties.com

Information is believed to be accurate but not guaranteed.

MORE ABOUT THE HICKORY 15

One of the biggest advantages of the Hickory 15 is that it borders hundreds of acres of U.S. Army Corps of Engineers land. That means even more room to roam nearby and added recreational value without having to own it all yourself.

With its location, timber, road frontage, and proximity to lake country, the Hickory 15 would make a great hunting basecamp, weekend retreat, or private outdoor escape.

Contact Kix Nelson today to schedule a private showing and experience #TheSmallTownWay.



SMALLTOWN
HUNTING PROPERTIES
& REAL ESTATESM

KIX NELSON

LAND SPECIALIST

C: 417-841-7984

O: 816-577-5206

kix@smalltownproperties.com

4848 Main St. - Flora, MS 39701

smalltownproperties.com

Information is believed to be accurate but not guaranteed.

15± ACRES

HICKORY COUNTY, MISSOURI



SMALLTOWN
HUNTING PROPERTIES
& REAL ESTATESM

KIX NELSON

LAND SPECIALIST

C: 417-841-7984

O: 816-577-5206

kix@smalltownproperties.com

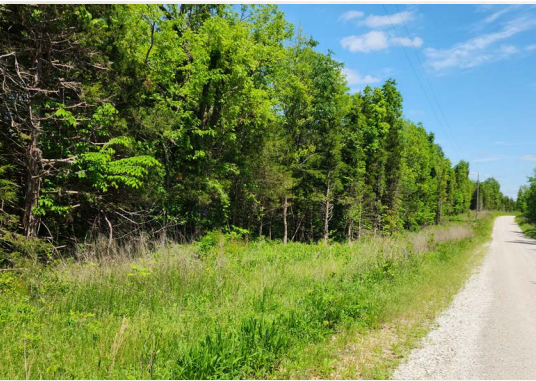
4848 Main St. - Flora, MS 39701

smalltownproperties.com

Information is believed to be accurate but not guaranteed.

15± ACRES

HICKORY COUNTY, MISSOURI



SMALLTOWN
HUNTING PROPERTIES
& REAL ESTATESM

KIX NELSON

LAND SPECIALIST

C: 417-841-7984

O: 816-577-5206

kix@smalltownproperties.com

4848 Main St. - Flora, MS 39701

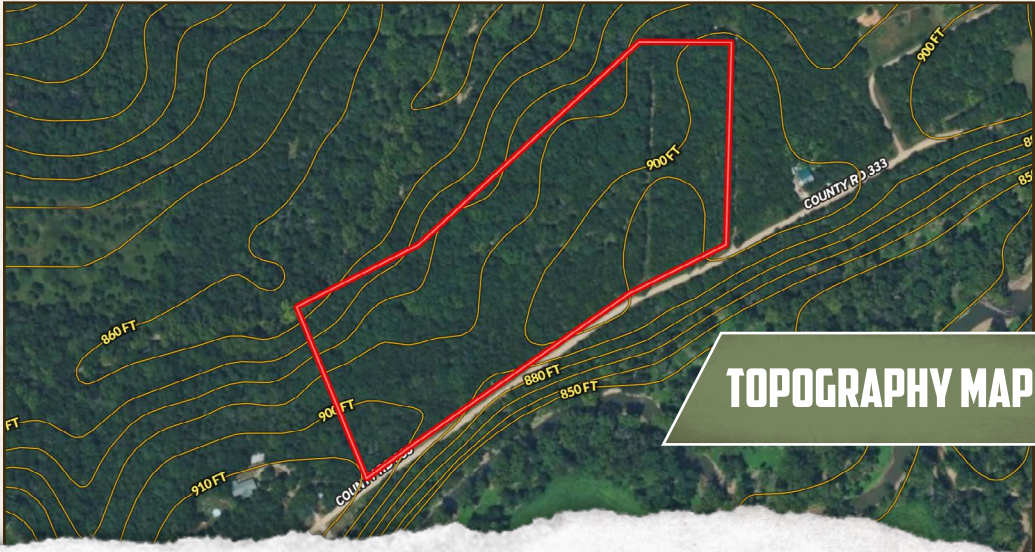
smalltownproperties.com

Information is believed to be accurate but not guaranteed.

15± ACRES

HICKORY COUNTY, MISSOURI

WATER MAP



TOPOGRAPHY MAP



SMALLTOWN
HUNTING PROPERTIES
& REAL ESTATESM

KIX NELSON

LAND SPECIALIST

C: 417-841-7984

O: 816-577-5206

kix@smalltownproperties.com

4848 Main St. - Flora, MS 39701

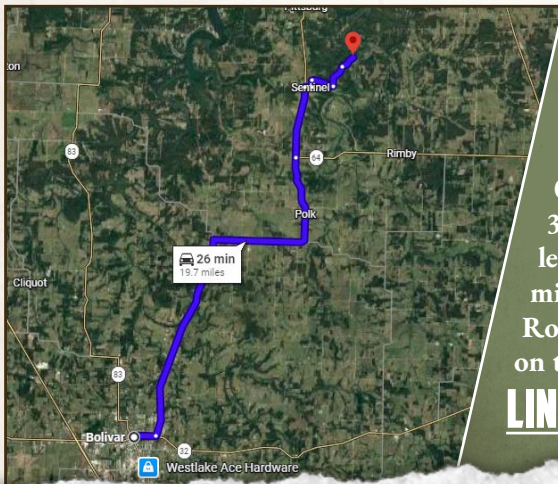
smalltownproperties.com

Information is believed to be accurate but not guaranteed.

15± ACRES

HICKORY COUNTY, MISSOURI

land id. LINK



Directions From Bolivar, MO:
Travel on State Highway D for 13.7 miles. Continue onto MO-64 W for 2.5 miles. Turn right onto E 318th Road, proceed for 0.2 miles, and then turn left onto S 181st Road. Travel for 0.2 miles, and then turn right onto E 315th Road. Proceed for 0.8 miles. Turn left onto S 190th Road, continue for 0.8 miles, and continue straight onto County Road 333. The property and sign will be on the left in 0.5 miles.

[LINK TO GOOGLE MAP DIRECTIONS](#)



SMALLTOWN
HUNTING PROPERTIES
& REAL ESTATESM

KIX NELSON

LAND SPECIALIST

C: 417-841-7984

O: 816-577-5206

kix@smalltownproperties.com

4848 Main St. - Flora, MS 39701

smalltownproperties.com

Information is believed to be accurate but not guaranteed.