

Home with Mother-in-Law House

Coahoma County

102 Elm Ave, Clarksdale, MS 38614



\$160,000



**Tom
Smith
LAND AND
HOMES**

Expect More. Get More.

Property Information

Location:

- 2 Minutes to Downtown Clarksdale, MS (0.4 Miles)

Property Use:

- Residential

Coordinates:

- 34.20495, -90.57985

Property Highlights

- 0.3± Acres
- 3 Bedrooms
- 2 Bathrooms
- 1,776± SqFt
- Built in 1921
- Front Porch
- 3-Car Attached Carport
- Fenced-In Backyard
- Mother-In-Law House



Expect More. Get More.

**ANTHONY
STEEN**

ALC®, REALTOR®

Office: 601.898.2772

Cell: 662.645.5151

Anthony@TomSmithLand.com

**A Real Estate Expert
You Can Trust!**



The Residence

1,776± SqFt

Home for sale located at 102 Elm Ave in Clarksdale, Coahoma County. This three-bedroom, two-bathroom house offers 1,776± square feet of heated and cooled living space. Inside, you will find a spacious kitchen, a dining room, and a living room complete with a fireplace. Outside, the property features a front porch, a covered 3-car attached carport, and a fenced-in backyard. The backyard also includes a newly renovated one-bedroom, one-bathroom Mother-in-law house. Call Anthony Steen today for a private showing of this home!



**ANTHONY
STEEN**

ALC®, REALTOR®

Office: 601.898.2772

Cell: 662.645.5151

Anthony@TomSmithLand.com



Expect More. Get More.

The Residence



**ANTHONY
STEEN**

ALC®, REALTOR®

Office: 601.898.2772

Cell: 662.645.5151

Anthony@TomSmithLand.com



Expect More. Get More.

The Residence



**ANTHONY
STEEN**

ALC®, REALTOR®

Office: 601.898.2772

Cell: 662.645.5151

Anthony@TomSmithLand.com



Expect More. Get More.

The Residence



**ANTHONY
STEEN**

ALC®, REALTOR®

Office: 601.898.2772

Cell: 662.645.5151

Anthony@TomSmithLand.com

**Tom
Smith
LAND AND
HOMES**

Expect More. Get More.

The Residence



**ANTHONY
STEEN**

ALC®, REALTOR®

Office: 601.898.2772

Cell: 662.645.5151

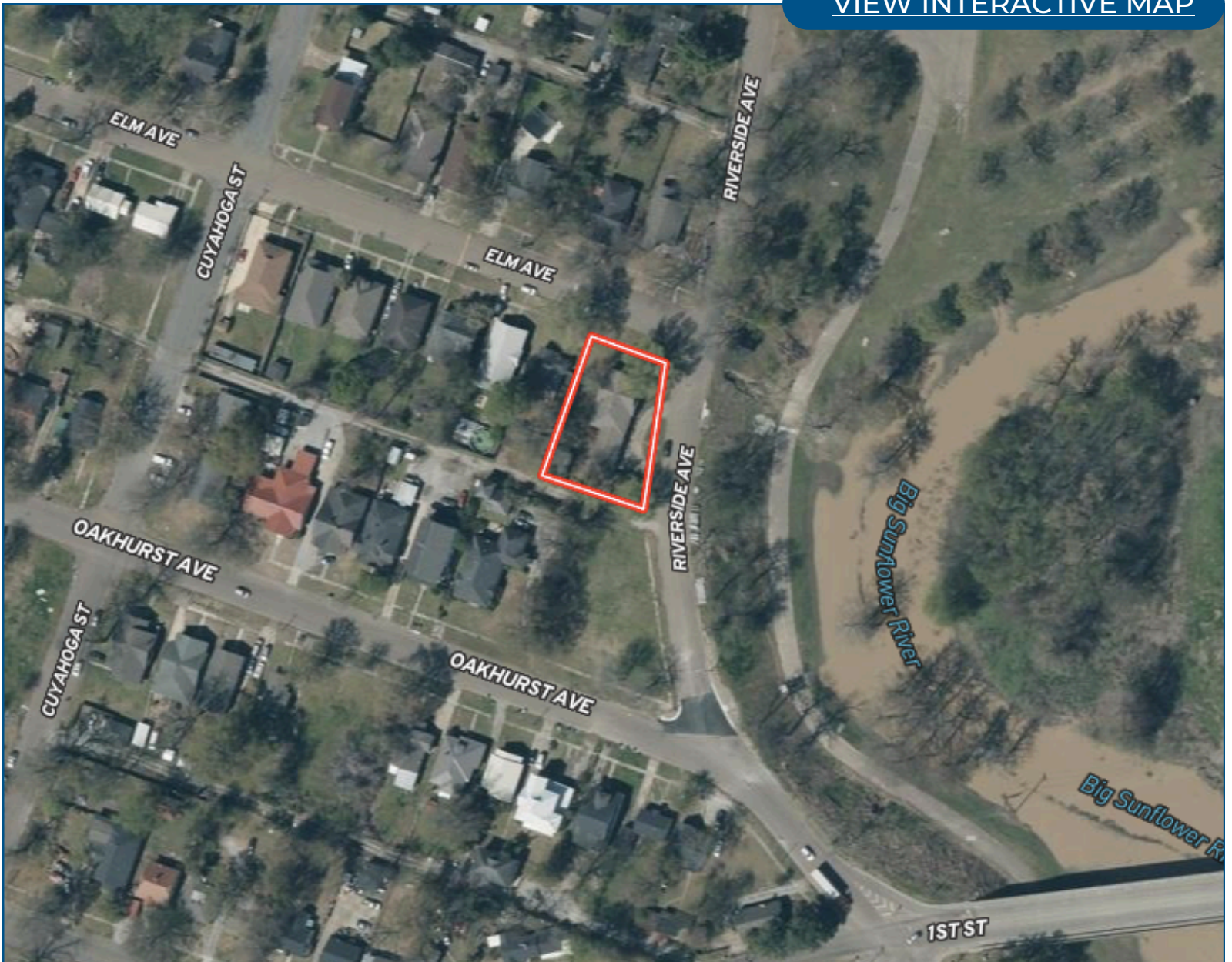
Anthony@TomSmithLand.com



Expect More. Get More.

Aerial Map

[VIEW INTERACTIVE MAP](#)



**ANTHONY
STEEN**

ALC®, REALTOR®

Office: 601.898.2772

Cell: 662.645.5151

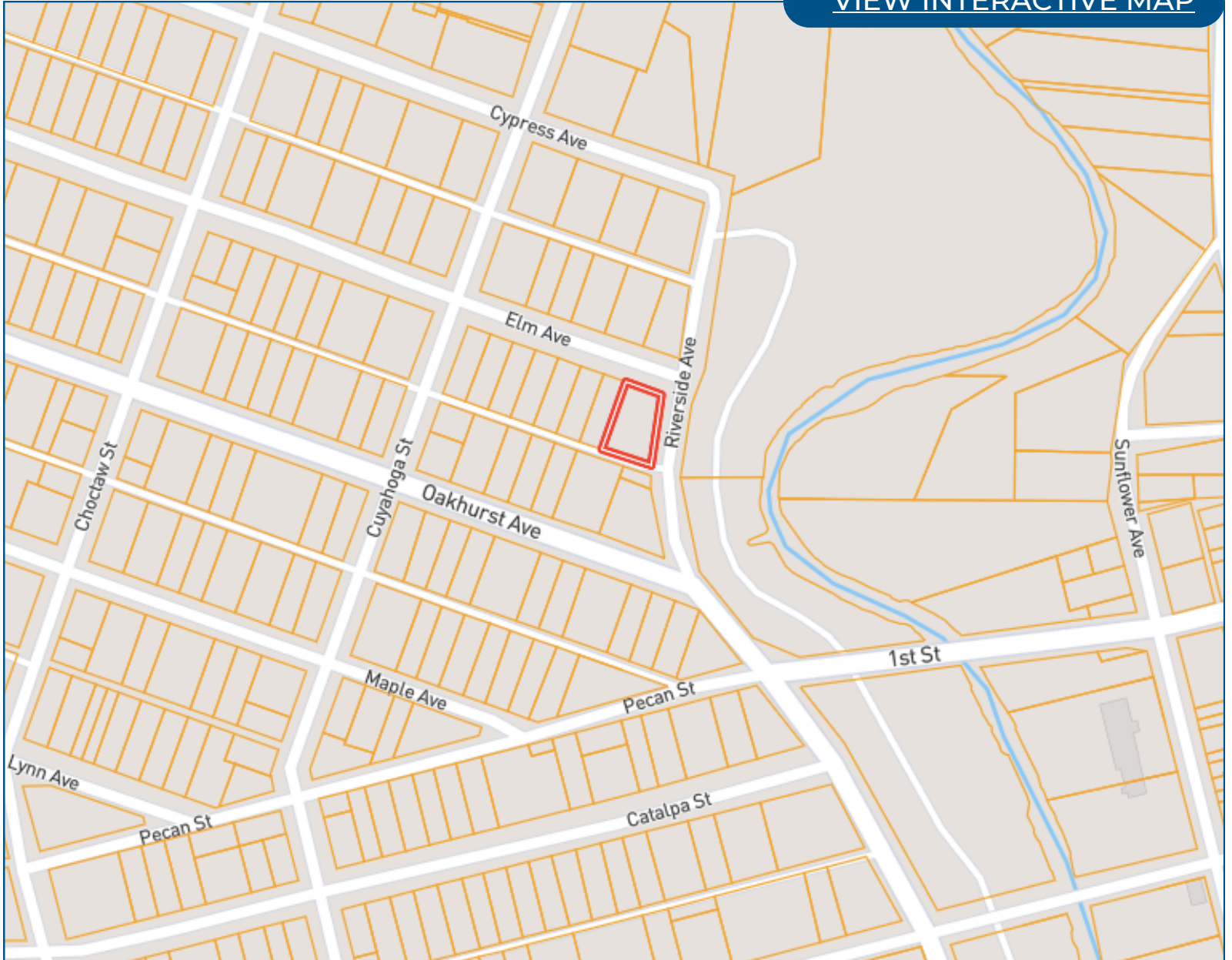
Anthony@TomSmithLand.com



Expect More. Get More.

Ownership Map

[VIEW INTERACTIVE MAP](#)



**ANTHONY
STEEN**

ALC®, REALTOR®

Office: 601.898.2772

Cell: 662.645.5151

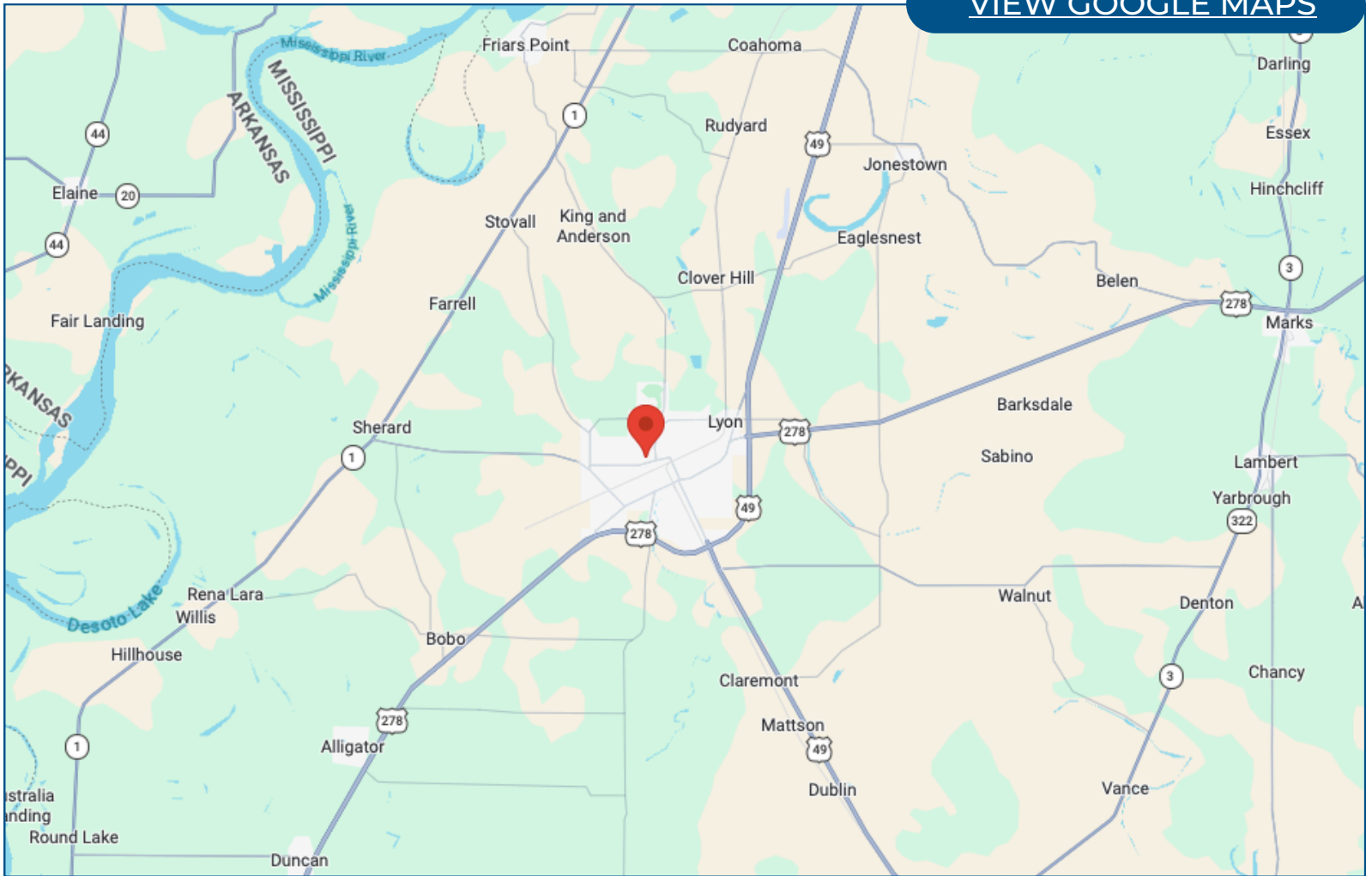
Anthony@TomSmithLand.com



Expect More. Get More.

Directional Map

[VIEW GOOGLE MAPS](#)



Directions from US-61 & US 49, Clarksdale, MS 38614

Travel west on US-61 for 0.5 miles, then take the exit toward Clarksdale for 338 feet. Merge onto Desoto Ave for 1.8 miles, then turn left onto N State Street for 0.7 miles. Take a sharp right onto Madison Ave for 0.4 miles. Merge onto Riverside Ave for 0.7 miles, then turn left onto Elm Ave. After 49 feet, the house will be on the left.

**ANTHONY
STEEN**

ALC®, REALTOR®

Office: 601.898.2772

Cell: 662.645.5151

Anthony@TomSmithLand.com



Expect More. Get More.

Listing Agent



Anthony Steen

ALC, Realtor & Land Specialist

Anthony was born in Bolivar County, but his family moved shortly after to Clarksdale, MS. He spent his primary educational and athletic years attending and playing sports at Lee Academy. As a child, he played baseball, football, basketball, soccer and even threw shot put and disc for track. After graduating in 2009, Anthony continued his education and athletic career for the next five years at the University of Alabama on a football scholarship. He majored in Health Environmental Science and completed his bachelor's degree and was a part of two SEC Championship and three National Championship teams with the Crimson Tide. After college, Anthony played for the Arizona Cardinals and the Miami Dolphins in the National Football League for 4 years until he decided to retire and come back to the Mississippi Delta where he grew up.

Growing up, Anthony was an avid hunter and fisherman who loved spending time helping his grandfather on the farm growing cotton and soybeans. His father and grandfather helped instill the importance of and a love for taking care of the land and wildlife around him. He enjoys all types of hunting from deer, duck, and turkey, to hogs, frogs, and pheasant. After retiring from the NFL, Anthony knew he wanted to come back home to the land he loved so much as a child.

Anthony currently resides in Tallahatchie County where he farmed soybeans with his family for a few years. After much deliberation and praying, Anthony knew it was time to start a new career path. He was certain he wanted to find a way to share his passion for the outdoors with others while staying true to his country roots. As a college athlete, Anthony learned hard work, dedication, discipline, trust, and how to work with others. These traits along with Anthony's personality, honesty, and knowledge of the land make him the perfect agent for you.

OFFICE: 601.898.2772

CELL: 662.645.5151

Anthony@TomSmithLand.com

**CALL ANTHONY STEEN
TODAY!**

