

Homesite in Pike County, MS

Deer Ridge Road

McComb, MS 39648



\$25,000



**Tom
Smith
LAND AND
HOMES**

Expect More. Get More.

Property Information

Location:

- 2.5 Miles East of McComb, MS

Property Use:

- Residential

Coordinates:

- 31.246, -90.4098

Property Highlights

- 1.42± Acres
- Power and Water Available



KADERO EDLEY

REALTOR®

O: 601.898.2772 | C: 601.488.7000

Kadero@TomSmithLand.com



JAKE CALLENDER

REALTOR®

O: 601.898.2772 | C: 601.955.2559

Jake@TomSmithLand.com

Expect More. Get More.

The Real Estate Experts You Can Trust!

601.898.2772 | TomSmithLandandHomes.com

Information is believed to be accurate but not guaranteed.



The Property

1.42± Acres

This 1.42± acre property in Pike County, MS, offers the perfect blend of peaceful country living with the convenience of nearby city amenities. Located just 3.5 miles from the heart of McComb, MS, this property provides quick access to shopping, dining, and schools while still enjoying a quiet, rural atmosphere. This tract is situated in a calm, close-knit community with a neighborhood watch program, minimal traffic, and a safe, quiet setting, making it ideal for your homesite or long-term investment. Whether you're looking to build your dream home or invest in a well-located piece of land, this 1.42± acre tract delivers a rare combination of convenience and peace. Give Kadero or Jake a call for your private viewing today!



KADERO EDLEY

REALTOR®

O: 601.898.2772 | C: 601.488.7000

Kadero@TomSmithLand.com

JAKE CALLENDER

REALTOR®

O: 601.898.2772 | C: 601.955.2559

Jake@TomSmithLand.com

Expect More. Get More.

The Real Estate Experts You Can Trust!

601.898.2772 | TomSmithLandandHomes.com

Information is believed to be accurate but not guaranteed.



The Residence



KADERO EDLEY

REALTOR®

O: 601.898.2772 | C: 601.488.7000

Kadero@TomSmithLand.com



JAKE CALLENDER

REALTOR®

O: 601.898.2772 | C: 601.955.2559

Jake@TomSmithLand.com

Expect More. Get More.

The Real Estate Experts You Can Trust!

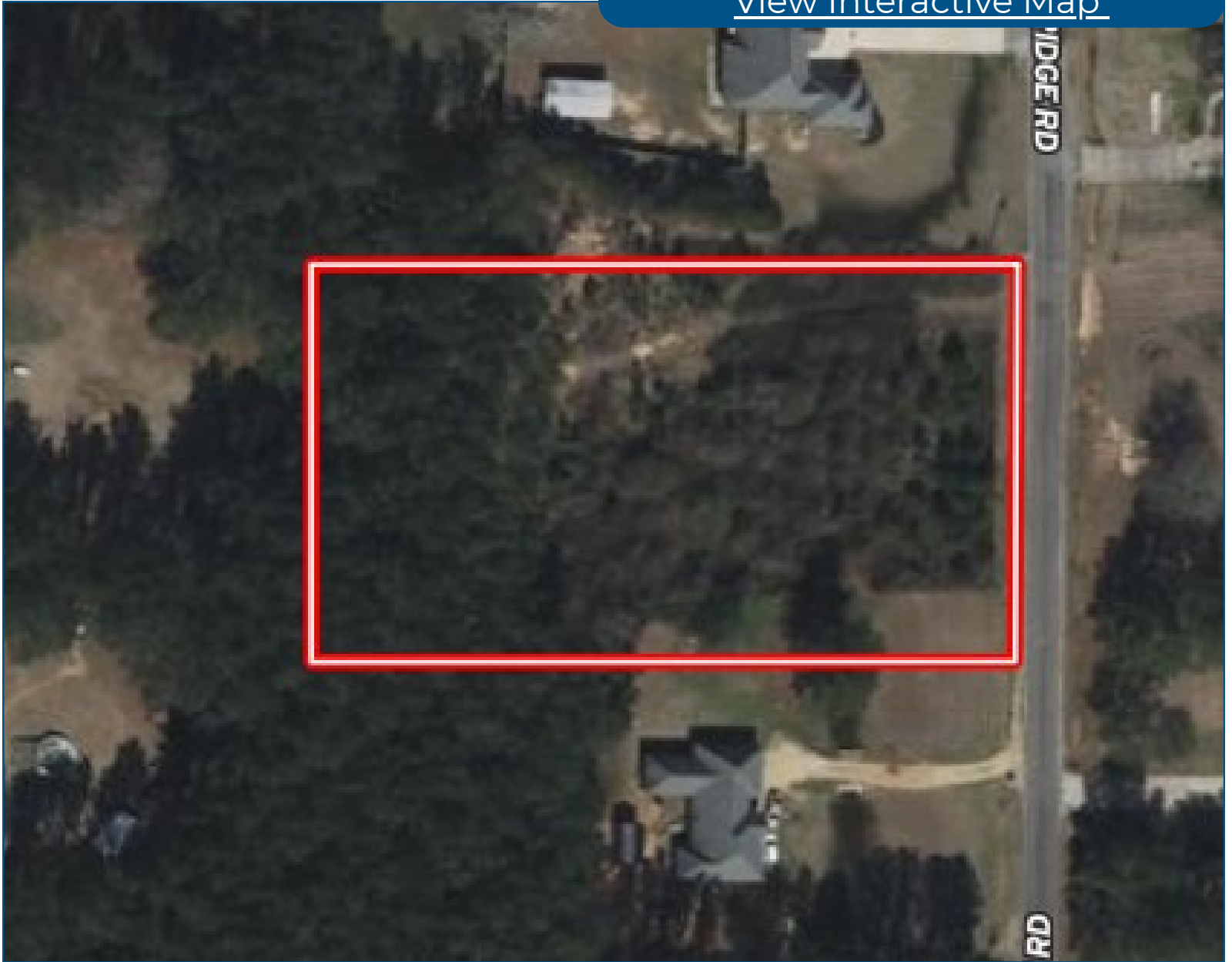
TomSmithLandandHomes.com

Information is believed to be accurate but not guaranteed.



Aerial Map

[View Interactive Map](#)



KADERO EDLEY

REALTOR®

O: 601.898.2772 | C: 601.488.7000

Kadero@TomSmithLand.com



JAKE CALLENDER

REALTOR®

O: 601.898.2772 | C: 601.955.2559

Jake@TomSmithLand.com

Expect More. Get More.

The Real Estate Experts You Can Trust!

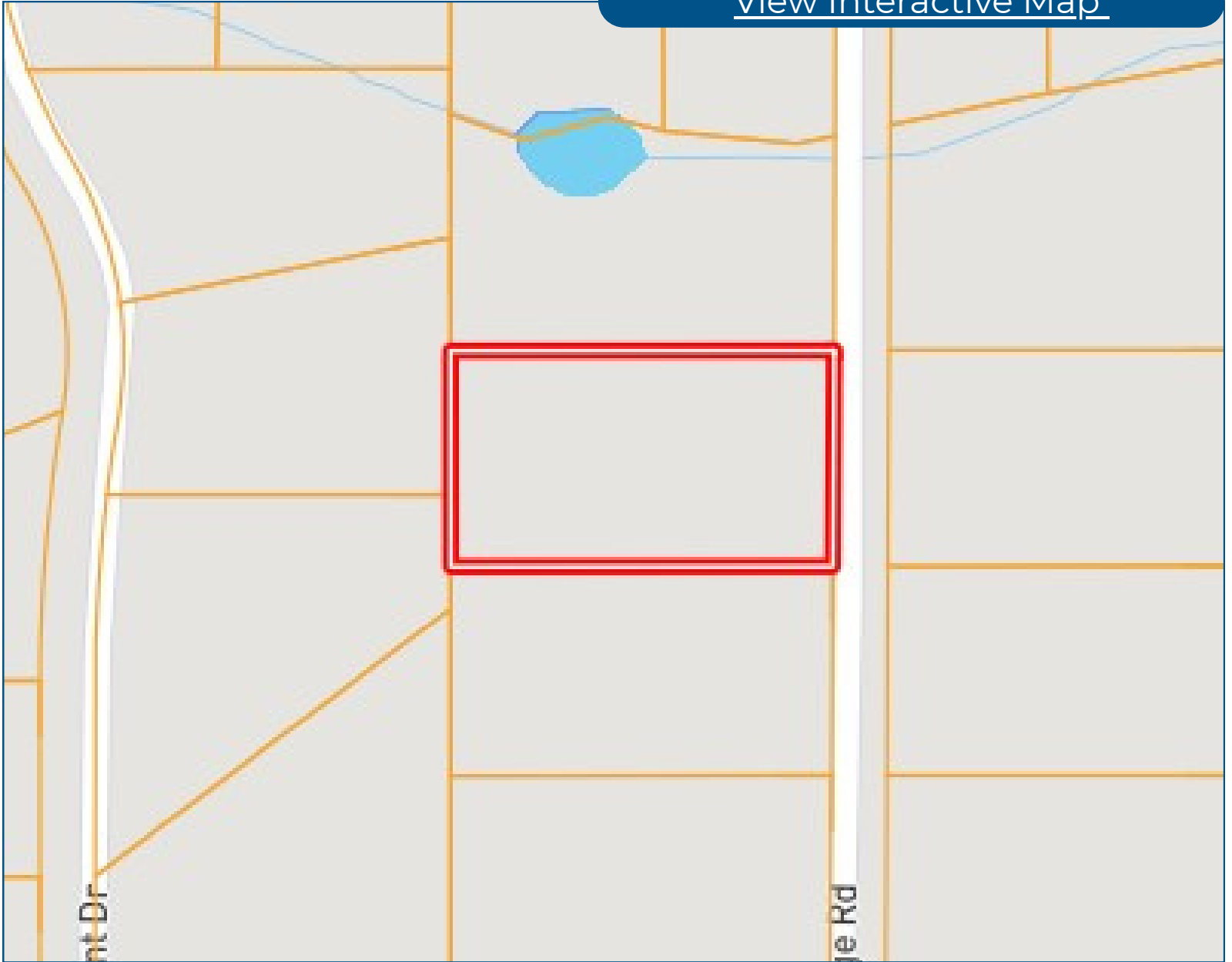
TomSmithLandandHomes.com

Information is believed to be accurate but not guaranteed.



Ownership Map

[View Interactive Map](#)



KADERO EDLEY

REALTOR®

O: 601.898.2772 | C: 601.488.7000

Kadero@TomSmithLand.com



JAKE CALLENDER

REALTOR®

O: 601.898.2772 | C: 601.955.2559

Jake@TomSmithLand.com

Expect More. Get More.

The Real Estate Experts You Can Trust!

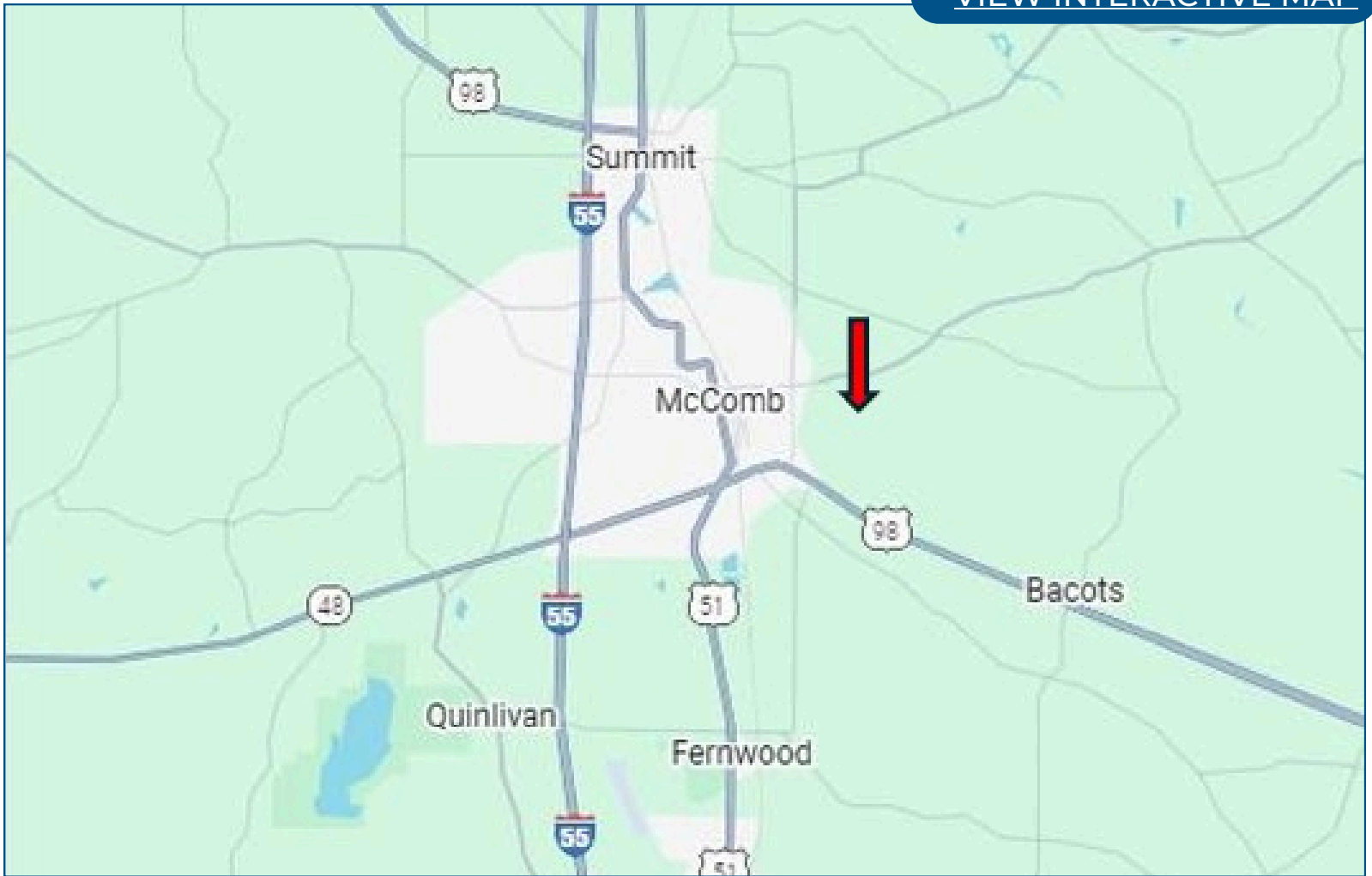
TomSmithLandandHomes.com

Information is believed to be accurate but not guaranteed.



Directional Map

[VIEW INTERACTIVE MAP](#)



Directions from MS-44 in McComb, MS: Travel east on MS-44 E/State St toward N Front St for 2.5 miles. Turn right onto Boone Rd for 0.3 miles. Turn left to stay on Boone Rd for 0.2 miles Turn right onto Deer Ridge Rd for 0.2 miles and the property will be on your right.

KADERO EDLEY

REALTOR®

O: 601.898.2772 | C: 601.488.7000

Kadero@TomSmithLand.com



JAKE CALLENDER

REALTOR®

O: 601.898.2772 | C: 601.955.2559

Jake@TomSmithLand.com

Expect More. Get More.

The Real Estate Experts You Can Trust!



TomSmithLandandHomes.com

Information is believed to be accurate but not guaranteed.