

# Country Living on 1± Acre

22 County Road 253

Louin, Jasper County, Mississippi



**\$117,000**



**BRIAN GRAY**  
REALTOR®

O: 601.898.2772 | C: 601.624.1175  
Brian@TomSmithLand.com



**LAYTON HORNE**  
REALTOR®

O: 601.898.2772 | C: 601.624.1282  
Layton@TomSmithLand.com



# Property Information

## Location:

- 22 County Road 253, Louin, Jasper County, MS

## Property Use:

- Residential

## Coordinates:

- 32.1563, -89.21505

# Property Highlights

- 1 Acre
- 1,050 Sqft.
- 3 Bedrooms, 1 Bathroom
- Slab Foundation Brick House with a Metal Roof
- Fireplace



**BRIAN GRAY**  
REALTOR®

O: 601.898.2772 | C: 601.624.1175  
Brian@TomSmithLand.com



**LAYTON HORNE**  
REALTOR®

O: 601.898.2772 | C: 601.624.1282  
Layton@TomSmithLand.com

# The Residence

1,050 Square Feet

Recently renovated and easy to maintain, this charming 3-bedroom, 1-bath brick home sits on a full acre and offers the best of country living. Perfect for first-time buyers, it features a slab foundation, durable metal roof, and tile floors throughout, built for comfort and simplicity.



**BRIAN GRAY**  
REALTOR®

O: 601.898.2772 | C: 601.624.1175  
Brian@TomSmithLand.com



**LAYTON HORNE**  
REALTOR®

O: 601.898.2772 | C: 601.624.1282  
Layton@TomSmithLand.com



# The Residence



**BRIAN GRAY**  
REALTOR®

O: 601.898.2772 | C: 601.624.1175  
Brian@TomSmithLand.com



**LAYTON HORNE**  
REALTOR®

O: 601.898.2772 | C: 601.624.1282  
Layton@TomSmithLand.com



# The Residence



**BRIAN GRAY**  
REALTOR®

O: 601.898.2772 | C: 601.624.1175  
Brian@TomSmithLand.com



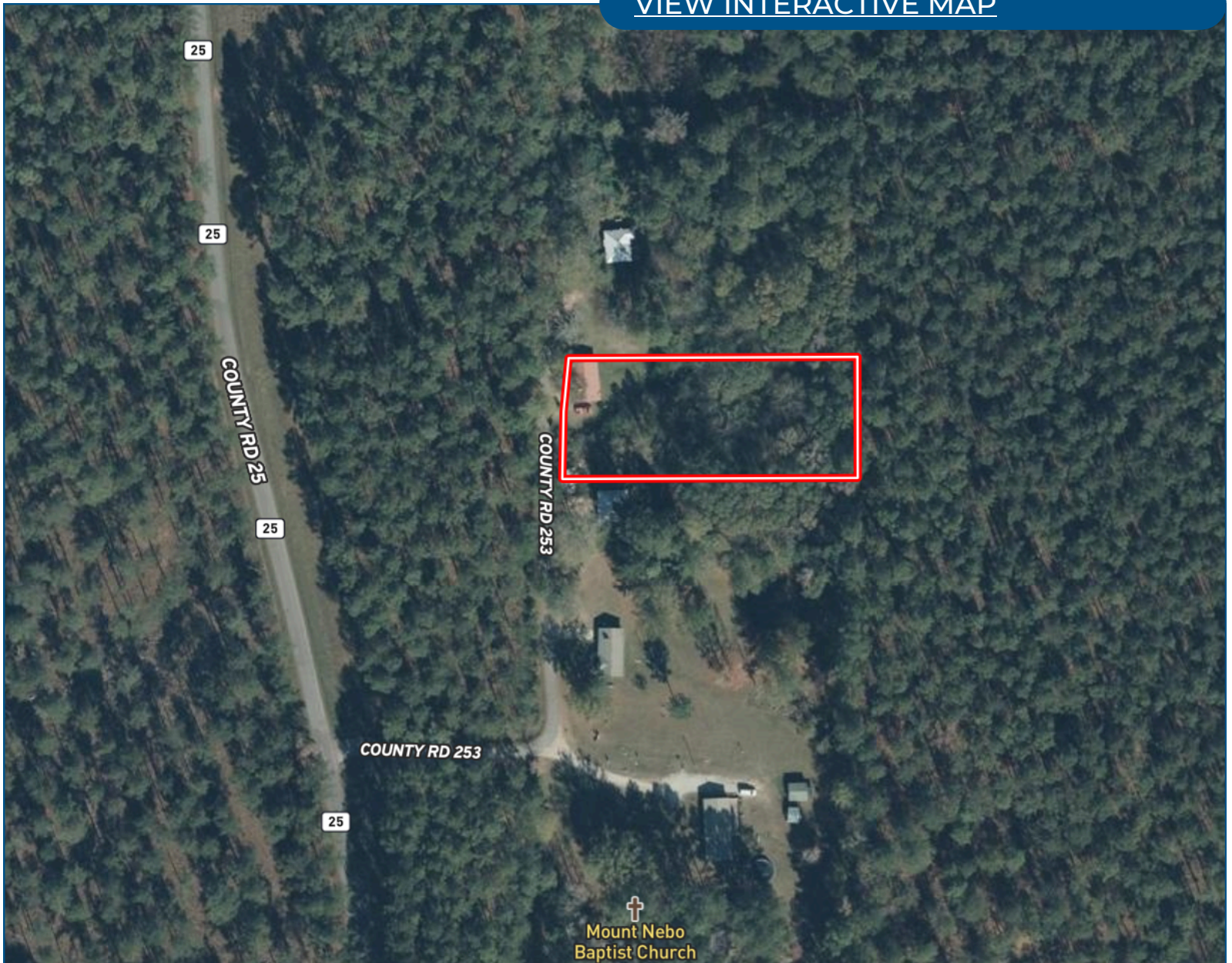
**LAYTON HORNE**  
REALTOR®

O: 601.898.2772 | C: 601.624.1282  
Layton@TomSmithLand.com



# Aerial Map

[VIEW INTERACTIVE MAP](#)



**BRIAN GRAY**  
REALTOR®

O: 601.898.2772 | C: 601.624.1175  
Brian@TomSmithLand.com



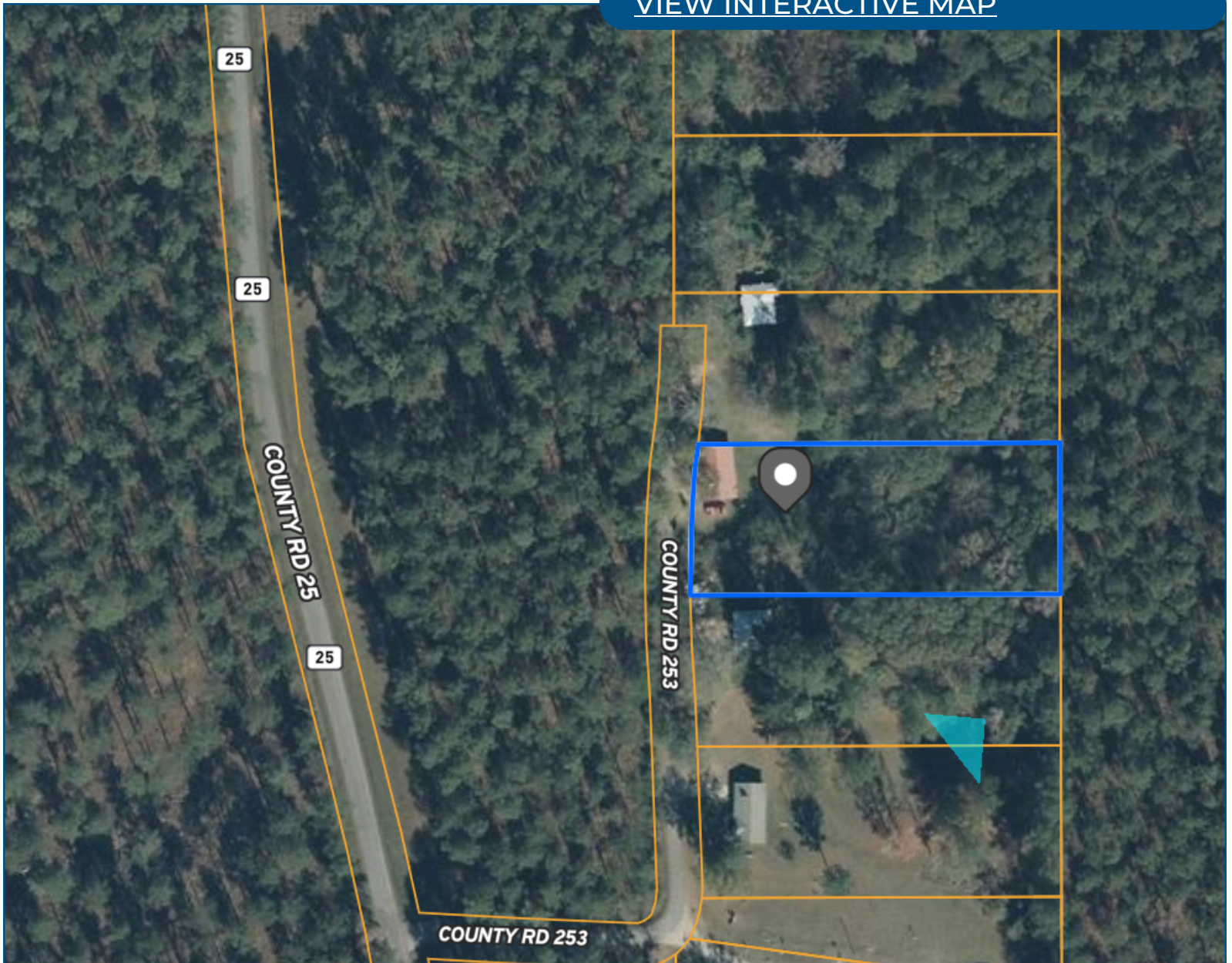
**LAYTON HORNE**  
REALTOR®

O: 601.898.2772 | C: 601.624.1282  
Layton@TomSmithLand.com



# Ownership Map

[VIEW INTERACTIVE MAP](#)



**BRIAN GRAY**  
REALTOR®

O: 601.898.2772 | C: 601.624.1175  
[Brian@TomSmithLand.com](mailto:Brian@TomSmithLand.com)



**LAYTON HORNE**  
REALTOR®

O: 601.898.2772 | C: 601.624.1282  
[Layton@TomSmithLand.com](mailto:Layton@TomSmithLand.com)



# Directional Map

[VIEW INTERACTIVE MAP](#)



From I-20 exit 109, head southwest on Hwy 15 for 15.3 miles. Turn right onto County Road 25. Stay on County Road 25 for 1 mile. Turn right onto County Road 225. The property will be .1 miles down County Road 225, on your right.



**BRIAN GRAY**  
REALTOR®

O: 601.898.2772 | C: 601.624.1175  
Brian@TomSmithLand.com



**LAYTON HORNE**  
REALTOR®

O: 601.898.2772 | C: 601.624.1282  
Layton@TomSmithLand.com