



# SMALLTOWN

HUNTING PROPERTIES  
& REAL ESTATE<sup>SM</sup>

**37.5± ACRES**  
**CLAY COUNTY, MS**  
**\$123,750**

OFFICE (662) 238-4077 | [WWW.SMALLTOWNPROPERTIES.COM](http://WWW.SMALLTOWNPROPERTIES.COM)

# THE CLAY 37.5

# PROPERTY PROFILE

## LOCATION:

- Happy Hollow Road  
Woodland, MS 39776
- Clay County
- 9.7± Miles SE of Houston
- 12.8± Miles NE of Woodland
- 37.5± Miles NW of Starkville
- 45.3± Miles SW of Tupelo

## COORDINATES:

- 33.8059915, -88.9056489

## TAX INFORMATION:

- Parcel #: 006-05-0030000
- \$100.68 (2024)

## PROPERTY USE:

- Hunting
- Recreational
- Agricultural
- Investment
- Potential Home/Cabin Site

## PROPERTY INFORMATION:

- 37.5± Total Acres
- 13± Acres Plantation Pine
- 8± Acres Farmland
- Road Frontage
- Multiple Creeks
- Frontage on Houlika Creek
- Internal Road System
- West Point School District
- Electricity Available



**SMALLTOWN**  
HUNTING PROPERTIES  
& REAL ESTATE™  
smalltownproperties.com



AMEILA SANSING | RESIDENTIAL & LAND SPECIALIST  
C: 769-204-0230 | ameila@smalltownproperties.com

HUNTER ROBISON | LAND SPECIALIST  
C: 662-816-7987 | hrobison@smalltownproperties.com

501 hwy 12 w ste. 150B - Starkville, MS 39759 | O: 662-338-2027

50 CR 401 - Oxford, MS 38655 | O: 662-238-4077

Information is believed to be accurate but not guaranteed.

# WELCOME TO THE CLAY 37.5

**WELCOME TO THE CLAY 37.5, LOCATED ON HAPPY HOLLOW ROAD JUST OUTSIDE OF WOODLAND IN CLAY COUNTY, MISSISSIPPI!** This versatile 37.5± acre tract offers a strong blend of timber, agriculture, water features, and accessibility, making it well-suited for hunting, recreation, a future homesite, or long-term investment.

With 13± acres of plantation pine and 8± acres of productive agricultural ground, the Clay 37.5 has the potential to serve as an income source for new owners through farming or leasing. It features frontage along Happy Hollow Road, an established internal road system, and multiple creeks, including frontage on Houlika Creek, providing both scenic appeal and reliable water sources for wildlife. A portion of the property lies within the FEMA-designated floodplain; however, there is ample acreage outside of the floodplain suitable for a homesite or future improvements. The tract is located in the West Point School District, with electricity available through Four-County EPA.



**SMALLTOWN**  
HUNTING PROPERTIES  
& REAL ESTATE™  
smalltownproperties.com



**AMEILA SANSING** | RESIDENTIAL & LAND SPECIALIST  
C: 769-204-0230 | ameila@smalltownproperties.com

**HUNTER ROBISON** | LAND SPECIALIST  
C: 662-816-7987 | hrobison@smalltownproperties.com

501 hwy 12 w ste. 150B - Starkville, MS 39759 | O: 662-338-2027

50 CR 401 - Oxford, MS 38655 | O: 662-238-4077

Information is believed to be accurate but not guaranteed.

# MORE ABOUT THE CLAY 37.5

Located in Clay County on the Chickasaw County line, the Clay 37.5 sits approximately 9.7 miles southeast of Houston, 12.8± miles northeast of Woodland, 37.5± miles northwest of Starkville, and 45.3± miles southwest of Tupelo, offering a convenient North Mississippi location with access to nearby towns and amenities.

If you're searching for a manageable acreage tract with water, accessibility, and income-producing potential, this Clay County property presents an excellent opportunity.

**Contact Hunter Robison or Ameila Sansing today to schedule a private showing and experience #TheSmallTownWay.**



**SMALLTOWN**  
HUNTING PROPERTIES  
& REAL ESTATE™  
smalltownproperties.com



**AMEILA SANSING** | RESIDENTIAL & LAND SPECIALIST  
C: 769-204-0230 | [ameila@smalltownproperties.com](mailto:ameila@smalltownproperties.com)

**HUNTER ROBISON** | LAND SPECIALIST  
C: 662-816-7987 | [hrobison@smalltownproperties.com](mailto:hrobison@smalltownproperties.com)

501 hwy 12 w ste. 150B - Starkville, MS 39759 | O: 662-338-2027

50 CR 401 - Oxford, MS 38655 | O: 662-238-4077

Information is believed to be accurate but not guaranteed.

37.5± ACRES

CLAY COUNTY, MISSISSIPPI



**SMALLTOWN**  
HUNTING PROPERTIES  
& REAL ESTATE™  
smalltownproperties.com



**AMEILA SANSING** | RESIDENTIAL & LAND SPECIALIST  
C: 769-204-0230 | ameila@smalltownproperties.com

**HUNTER ROBISON** | LAND SPECIALIST  
C: 662-816-7987 | hrobison@smalltownproperties.com

501 hwy 12 w ste. 150B - Starkville, MS 39759 | O: 662-338-2027

50 CR 401 - Oxford, MS 38655 | O: 662-238-4077

Information is believed to be accurate but not guaranteed.

37.5± ACRES

CLAY COUNTY, MISSISSIPPI



**AMEILA SANSING** | RESIDENTIAL & LAND SPECIALIST  
C: 769-204-0230 | [ameila@smalltownproperties.com](mailto:ameila@smalltownproperties.com)

**HUNTER ROBISON** | LAND SPECIALIST  
C: 662-816-7987 | [hrobison@smalltownproperties.com](mailto:hrobison@smalltownproperties.com)

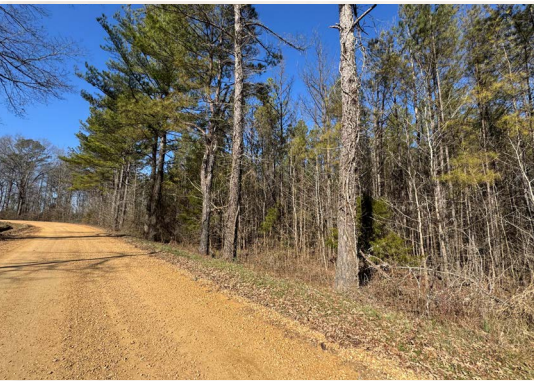
501 hwy 12 w ste. 150B - Starkville, MS 39759 | O: 662-338-2027

50 CR 401 - Oxford, MS 38655 | O: 662-238-4077

*Information is believed to be accurate but not guaranteed.*

37.5± ACRES

CLAY COUNTY, MISSISSIPPI



**SMALLTOWN**  
HUNTING PROPERTIES  
& REAL ESTATE™  
smalltownproperties.com



**AMEILA SANSING** | RESIDENTIAL & LAND SPECIALIST  
C: 769-204-0230 | ameila@smalltownproperties.com

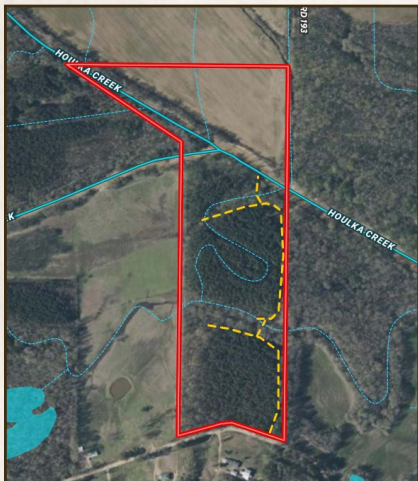
**HUNTER ROBISON** | LAND SPECIALIST  
C: 662-816-7987 | hrobison@smalltownproperties.com

501 hwy 12 w ste. 150B - Starkville, MS 39759 | O: 662-338-2027

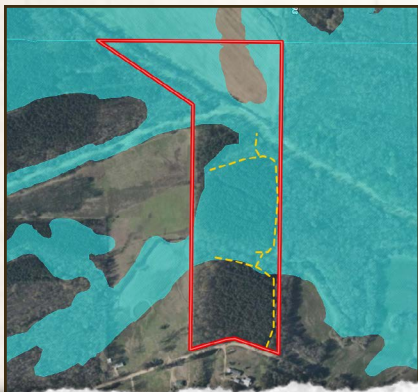
50 CR 401 - Oxford, MS 38655 | O: 662-238-4077

*Information is believed to be accurate but not guaranteed.*

# WATER FEATURES



# FLOOD MAP



# SOIL MAP & LEGEND



Code	Description	Acres	%	CPI	NCCPI	CAP	?
Be	Belden silt loam	35.00	93.11%	-	77	2w	?
OrD2	Ora loam, 8 to 12 percent slopes, eroded	1.88	5%	-	37	4e	?
KpC2	Kipling silt loam, 5 to 8 percent slopes, moderately eroded	0.71	1.89%	-	60	4e	?
<b>Totals</b>		<b>37.59 ac</b>		<b>0 CPI Average</b>	<b>74.68 NCCPI Average</b>	<b>2.14 Cap. Average</b>	



**AMEILA SANSING** | RESIDENTIAL & LAND SPECIALIST  
 C: 769-204-0230 | ameila@smalltownproperties.com



**SMALLTOWN**  
 HUNTING PROPERTIES  
 & REAL ESTATE™  
 smalltownproperties.com



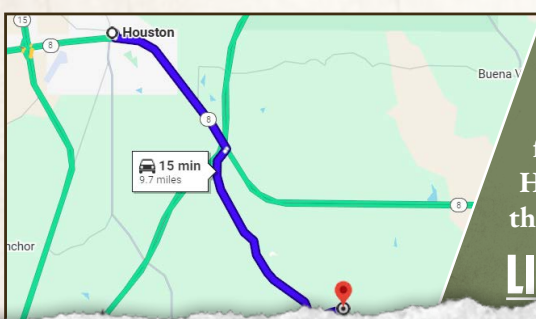
**HUNTER ROBISON** | LAND SPECIALIST  
 C: 662-816-7987 | hrobison@smalltownproperties.com

37.5± ACRES

CLAY COUNTY, MISSISSIPPI



land id. LINK



Directions From Houston, MS: Travel on MS-8 E for 2.8 miles. Turn right onto Doss Drive then immediately turn left onto County Road 92 and proceed for 4.8 miles. Turn left onto Happy Hollow Road and continue for 0.8 miles to the destination on the left.

[LINK TO GOOGLE MAP DIRECTIONS](#)



**SMALLTOWN**  
HUNTING PROPERTIES  
& REAL ESTATE™  
smalltownproperties.com



AMEILA SANSING | RESIDENTIAL & LAND SPECIALIST  
C: 769-204-0230 | ameila@smalltownproperties.com

HUNTER ROBISON | LAND SPECIALIST  
C: 662-816-7987 | hrobison@smalltownproperties.com

501 hwy 12 w ste. 150B - Starkville, MS 39759 | O: 662-338-2027

50 CR 401 - Oxford, MS 38655 | O: 662-238-4077

Information is believed to be accurate but not guaranteed.