

3 Bed, 3 Bath Home

Washington County

525 Delta City Road, Hollandale, MS



\$95,000



Expect More. Get More.

Property Information

Location:

- 525 Delta City Road,
Hollandale, MS 38748

Property Use:

- Residential

Coordinates:

- 33.1627, -90.78905

Property Highlights

- 1.48± Acres
- 2,846± Sq Ft
- 3 Bedrooms, 3 Bathrooms
- New Roof Installed in 2020
- Underground Storm Shelter
- Two-Car Carport
- Shop



BRUCE WEST

MANAGING BROKER, ALC®
O: 662.441.2500 | C: 662.873.3007
Bruce@TomSmithLand.com

ROB BALLINGER

LAND & CONSERVATION CONSULTANT
O: 662.441.2500 | C: 662.941.7175
Rob@TomSmithLand.com

Expect More. Get More.

The Real Estate Experts You Can Trust!

601.898.2772 | TomSmithLandandHomes.com

Information is believed to be accurate but not guaranteed.



The Residence

2,846± Sq Ft

525 Delta City Road has it all in Hollandale, Washington County, MS! Enjoy peaceful country living with quick access to both Hollandale and Belzoni from Highway 12! Situated on 1.48± acres, this spacious 3-bedroom, 3-bath brick home offers the perfect balance of rural charm and modern convenience. The home rests on a slab foundation with a durable brick exterior and features a new roof installed in 2020, providing a solid start for your renovation vision. With the current flooring removed, this property is truly a blank canvas ready for your personal touch—whether you're looking to customize your dream home or invest in a renovation project with great potential. Inside, you'll find two living areas, including a cozy den with a fireplace, offering plenty of space for family gatherings and entertaining. Outdoors, the property continues to impress with a two-car carport, extra storage, a concrete back patio, and mature shade trees perfect for enjoying quiet afternoons. A shop provides ample workspace for hobbies or projects, and an underground storm shelter offers added peace of mind. This property is ideal for buyers seeking country comfort, convenience, and endless possibilities for customization.



BRUCE WEST

MANAGING BROKER, ALC®

O: 662.441.2500 | C: 662.873.3007

Bruce@TomSmithLand.com

ROB BALLINGER

LAND & CONSERVATION SPECIALIST

O: 662.441.2500 | C: 662.941.7175

Rob@TomSmithLand.com

Expect More. Get More.

The Real Estate Experts You Can Trust!

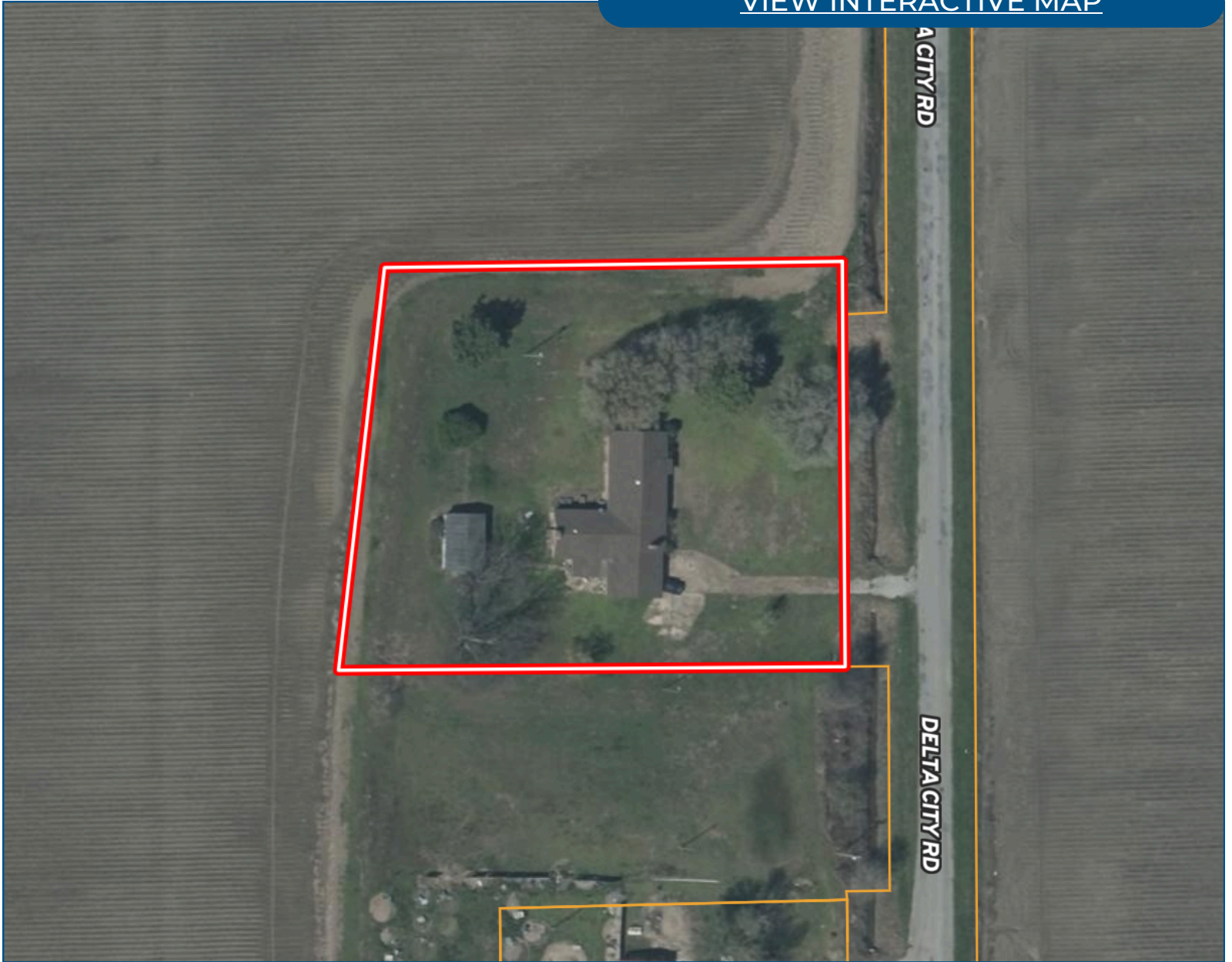
601.898.2772 | TomSmithLandandHomes.com

Information is believed to be accurate but not guaranteed.



Aerial Map

[VIEW INTERACTIVE MAP](#)



BRUCE WEST
MANAGING BROKER, ALC®
O: 662.441.2500 | C: 662.873.3007
Bruce@TomSmithLand.com



ROB BALLINGER
LAND & CONSERVATION SPECIALIST
O: 662.441.2500 | C: 662.941.7175
Rob@TomSmithLand.com

Expect More. Get More.

The Real Estate Experts You Can Trust!

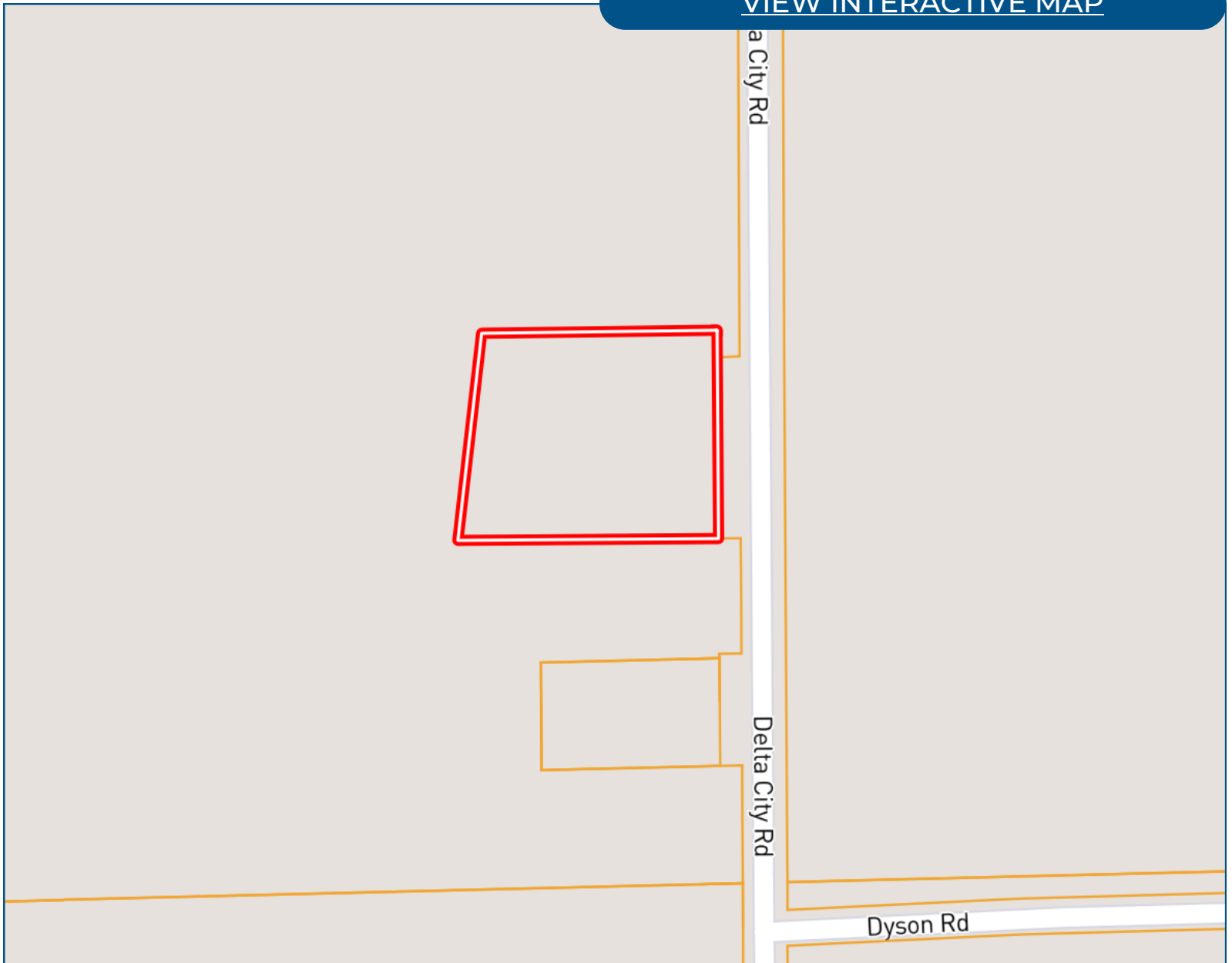
TomSmithLandandHomes.com

Information is believed to be accurate but not guaranteed.



Ownership Map

[VIEW INTERACTIVE MAP](#)



BRUCE WEST

MANAGING BROKER, ALC®
O: 662.441.2500 | C: 662.873.3007
Bruce@TomSmithLand.com

ROB BALLINGER

LAND & CONSERVATION SPECIALIST
O: 662.441.2500 | C: 662.941.7175
Rob@TomSmithLand.com

Expect More. Get More.

The Real Estate Experts You Can Trust!

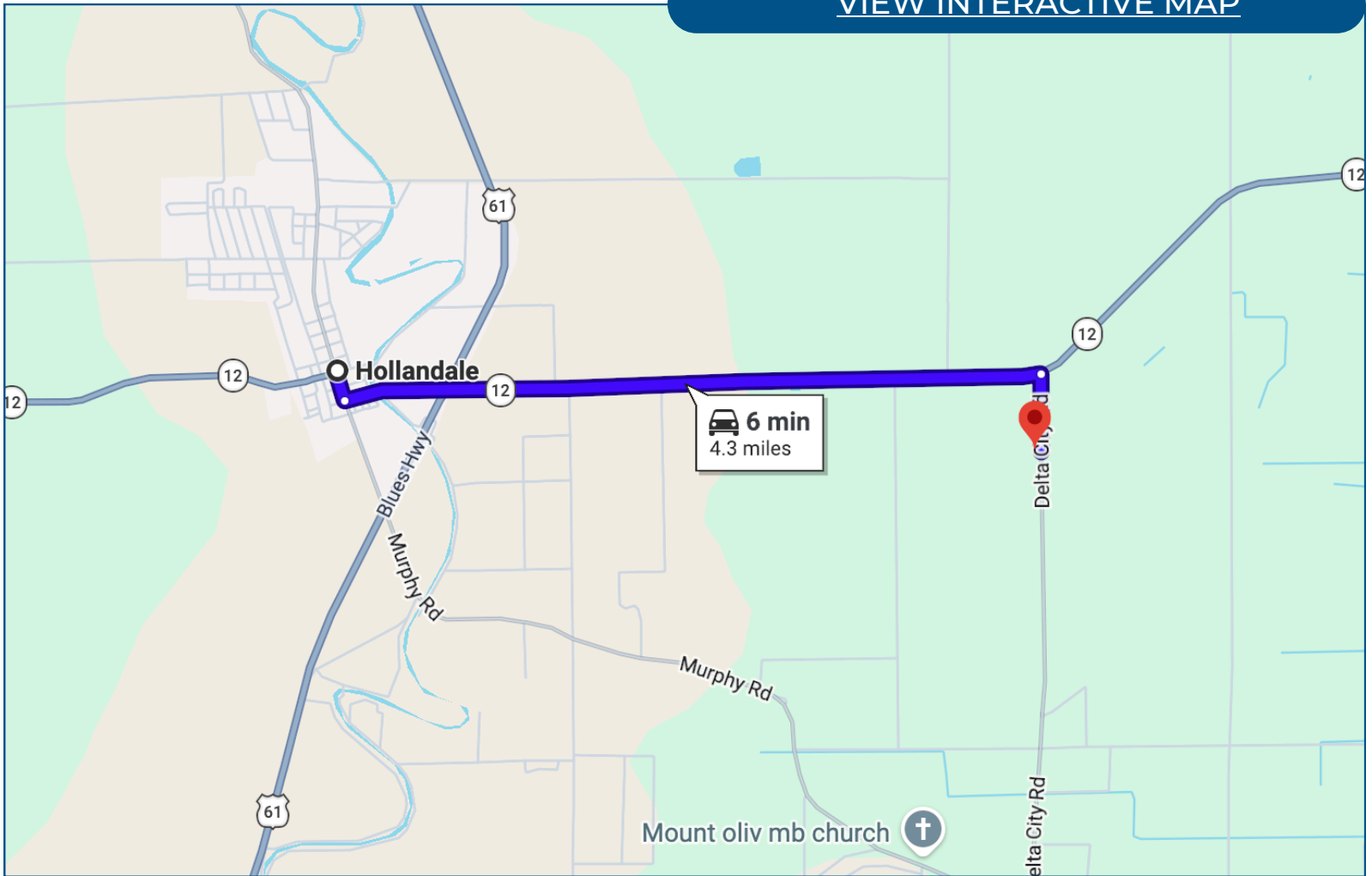
TomSmithLandandHomes.com

Information is believed to be accurate but not guaranteed.



Directional Map

[VIEW INTERACTIVE MAP](#)



Directions from Hollandale, MS:

Head toward W Washington St for 0.2 miles. Turn left onto MS-12 E/E Crouch St for 3.8 miles. Turn right onto Delta City Rd for 0.4 miles. The destination will be on the right.

BRUCE WEST

MANAGING BROKER, ALC®

O: 662.441.2500 | C: 662.873.3007

Bruce@TomSmithLand.com



ROB BALLINGER

LAND & CONSERVATION SPECIALIST

O: 662.441.2500 | C: 662.941.7175

Rob@TomSmithLand.com

Expect More. Get More.

The Real Estate Experts You Can Trust!

TomSmithLandandHomes.com

Information is believed to be accurate but not guaranteed.

