

# COUNTY LINE EXPIRED CRP/ PASTURE LAND AUCTION

KIMBALL & CHEYENNE COUNTIES, NE

**ONLINE  
ONLY  
Auction**

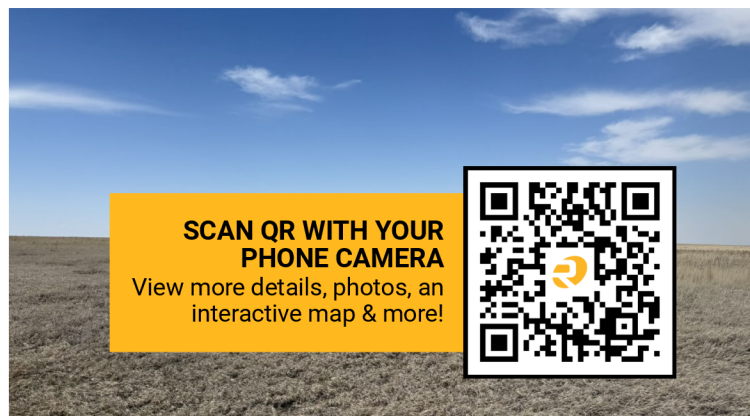
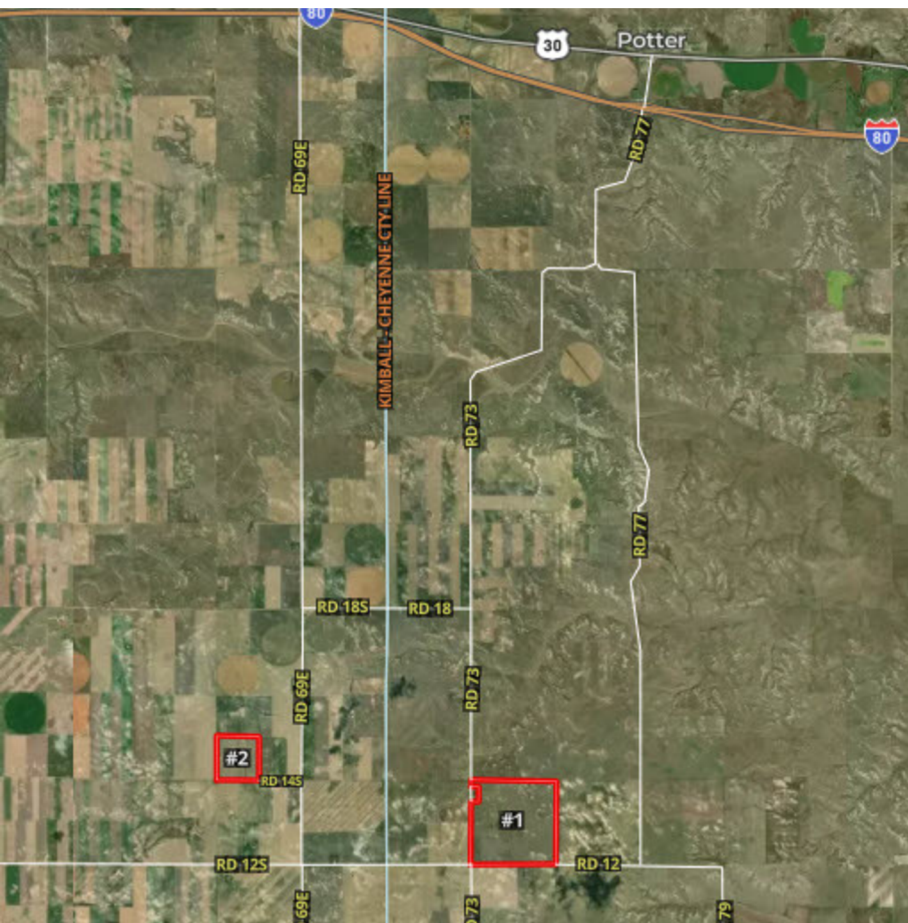
Thurs, June 25, 2026

Bidding Opens 10:00 am MT

"Soft" Closes at 12:00 pm (noon)

## QUICK FACTS

- 804.6± total acres
- 786.7± Expired CRP acres
- 17.9± grass/rds acres
- Offered in 2 Parcels
- Kimball & Cheyenne Counties, NE
- Located 9 – 12 miles SW of Potter, NE or 17 - 20 mi W of Lorenzo, NE
- Possession upon closing
- Seller has applied for CRP Grassland Program
- Cost share available for well/cross fencing
- Seller to convey all OWNED mineral rights
- **Parcel #1:** 634.4± acres; 616.5± acres Expired CRP; 17.9± acres grass/rds, Cheyenne County
  - All of Section 24, less a parcel, T13N, R53W
  - Real Estate Taxes: \$3,815.08
  - FSA Base: 329.1 ac wheat w/ 32 bu yield
  - **Starting Bid: \$320,000**
- **Parcel #2:** 170.2± acres Expired CRP, Kimball County
  - SW1/4 of Section 16, T13N, R53W
  - Real Estate Taxes: \$1,122.12
  - FSA Base: 145.3 ac wheat w/ 30 bu yield
  - **Starting Bid: \$90,000**



**SCAN QR WITH YOUR  
PHONE CAMERA**

View more details, photos, an  
interactive map & more!



Office: 970.522.7770 | Toll Free: 800.748.2589 | [reckagri.com](http://reckagri.com)

PO Box 407, Sterling, CO 80751  
ADDRESS SERVICE REQUESTED

PRSR FIRST CLASS  
U.S. POSTAGE  
**PAID**  
MAIL U.S.A.

## The proof is in the numbers.

We connect buyers and sellers of ag real estate like no one else can - and we have the reputation and relationships to prove it.

**976,685**

total acres sold

**2,116**

transactions

**456**

auctions

### What's inside:

#### COUNTY LINE EXPIRED CRP/ PASTURE LAND AUCTION

2 Parcels

804± total acres

#### ONLINE-ONLY AUCTION

June 25, 2026

10 am - 12 pm MT



*Mailer is not intended to solicit currently listed properties.  
Reck Agri Realty & Auction is licensed in CO, NE and KS.*

# COUNTY LINE EXPIRED CRP/ PASTURE LAND AUCTION

Kimball & Cheyenne Counties, NE | 2 Parcels

**ONLINE  
ONLY  
Auction**

KIMBALL & CHEYENNE COUNTIES, NE



## ONLINE-ONLY AUCTION

**Thurs, June 25, 2026**

**10 am - 12 pm MT**

Expired CRP ground — SW of Potter, NE, in Kimball and Cheyenne Counties.

Immediate possession; available to graze or break out to farm. Offered in 2 parcels (634.4± ac & 170.2± ac); owned minerals convey.

