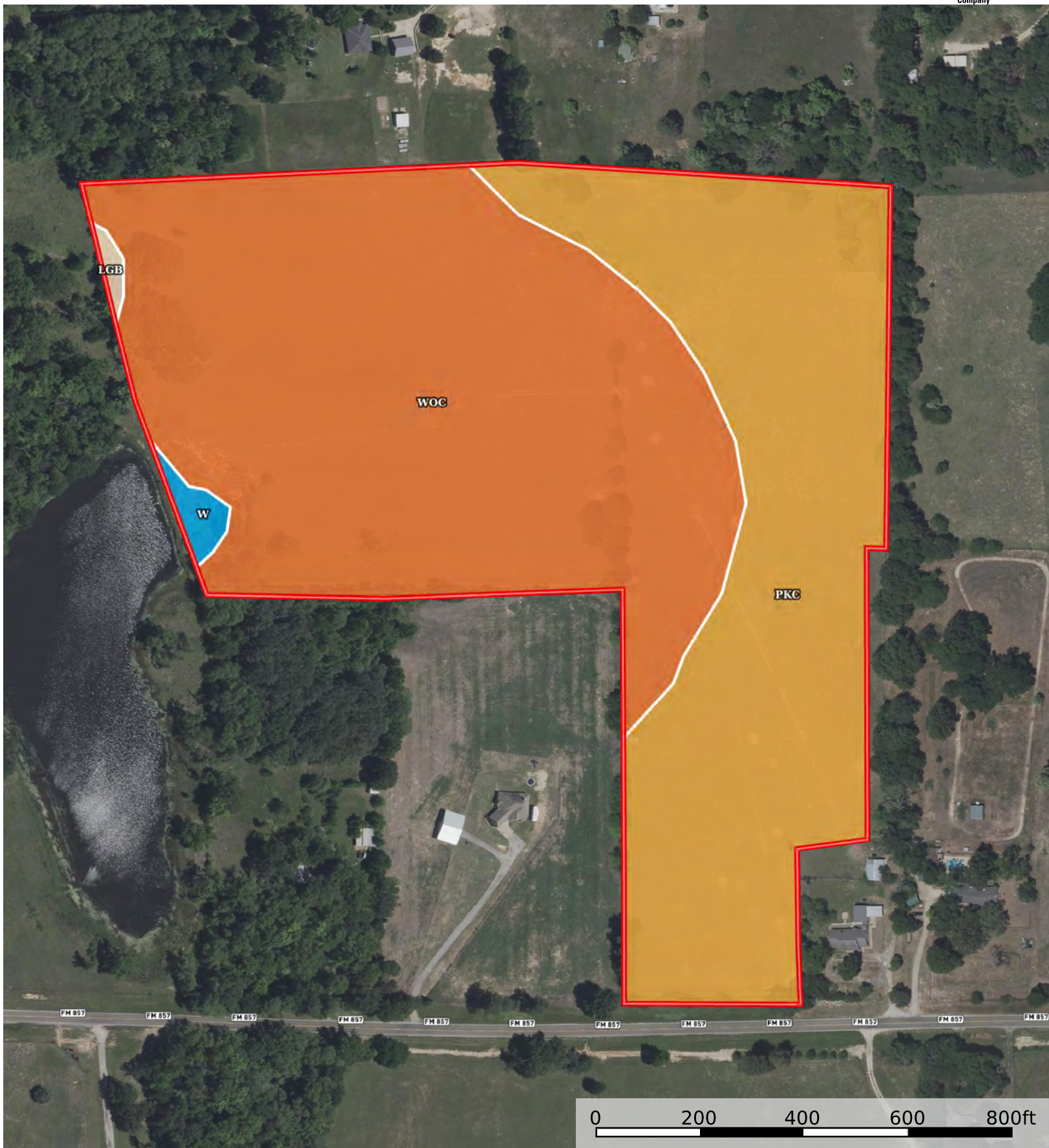


Grand Saline TX Land for Sale Smith County Dodds Land

Smith County, Texas, 35.7657 AC +/-



Boundary

Boundary 34.57 ac

SOIL CODE	SOIL DESCRIPTION	ACRES	%	CPI	NCCPI	CAP
WoC	Wolfpen loamy fine sand, 1 to 5 percent slopes	19.49	56.38	0	55	3e
PKC	Pickton loamy fine sand, 2 to 5 percent slopes	14.65	42.38	0	55	3s
W	Water	0.3	0.87	0	-	8
LgB	Leagueville loamy fine sand, 0 to 5 percent slopes	0.13	0.38	0	51	4w
TOTALS		34.57(*)	100%	-	54.51	3.05

(*) Total acres may differ in the second decimal compared to the sum of each acreage soil. This is due to a round error because we only show the acres of each soil with two decimal.

