



**Clift Land Brokers**



**ROOSEVELT COUNTY DAIRY**  
306 +/- ACRES

**TARA BONESTROO**  
806.535.9414

## LOCATION:

West from Portales on HWY 267 towards Floyd. Turn back south on S Roosevelt Road AD. Drive one mile and the dairy property begins on the east side of S RR AD.

## SIZE:

+/- 306 acres

## CAPACITY:

This facility has the capacity to milk 4,000 and includes 4,000 locking stanchions sized 6\*10 and another 1,200 locking stanchions sized 5\*10.

## MILK PARLOR:

The west (main) parlor is a +/- 15,756 sf double 20 parallel built in 2003. The east parlor is not currently being used but has all the equipment except the chiller. It is a double 20 with a single 10 hospital barn.

## FARMLAND:

There is 1 Pivot on +/- 120 Acres on the south side of the property.

## FEED STORAGE:

This dairy features one, five bay commodity barn, 3 hay sheds sized 200\*50 and 1 hay shed size 200\*60.

## SOIL:

See 'Soil Map'

## HOMES:

This property includes a 4,898 sq. ft. brick home (\*Per county assessor) originally built in 1981. This facility also includes 1 Mobile home.

## BARNS:

This facility includes multiple barns. The two larger barns have dimensions of 3,000 sq. ft. and 2,800 sq. ft.

## PRICE:

**\$2,800,000**

## LEGAL:

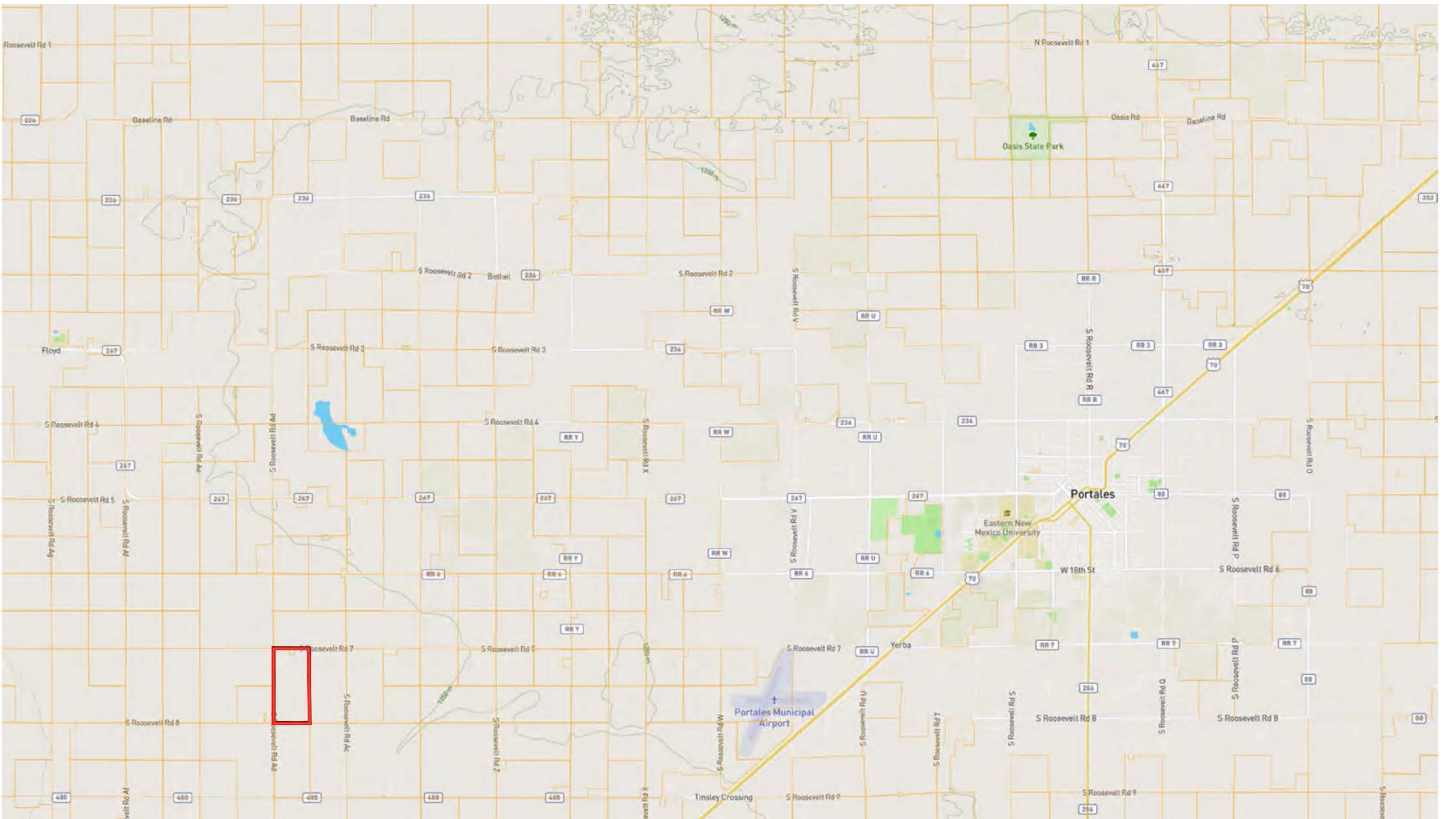
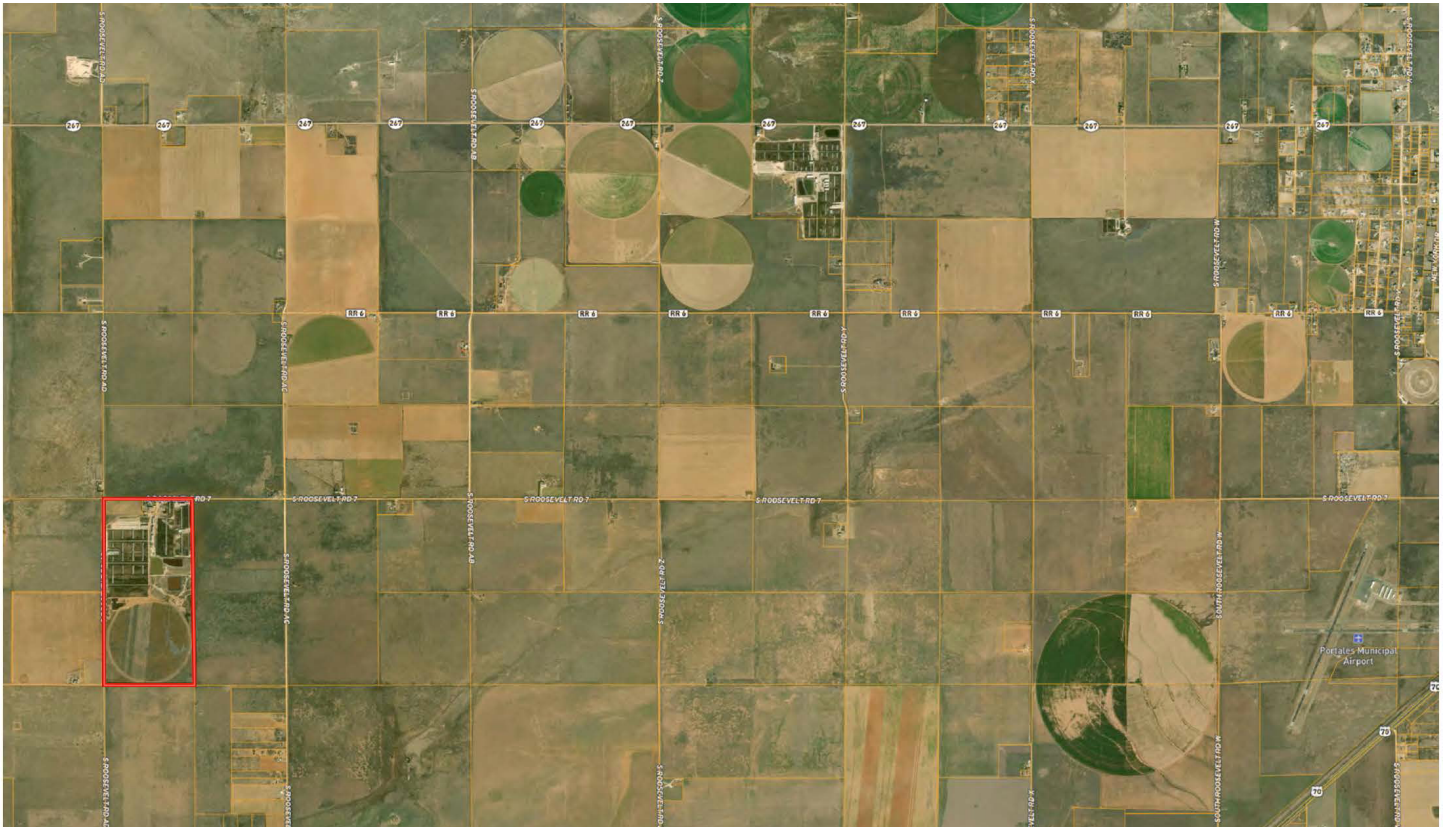
S:7 T:2S R:33e

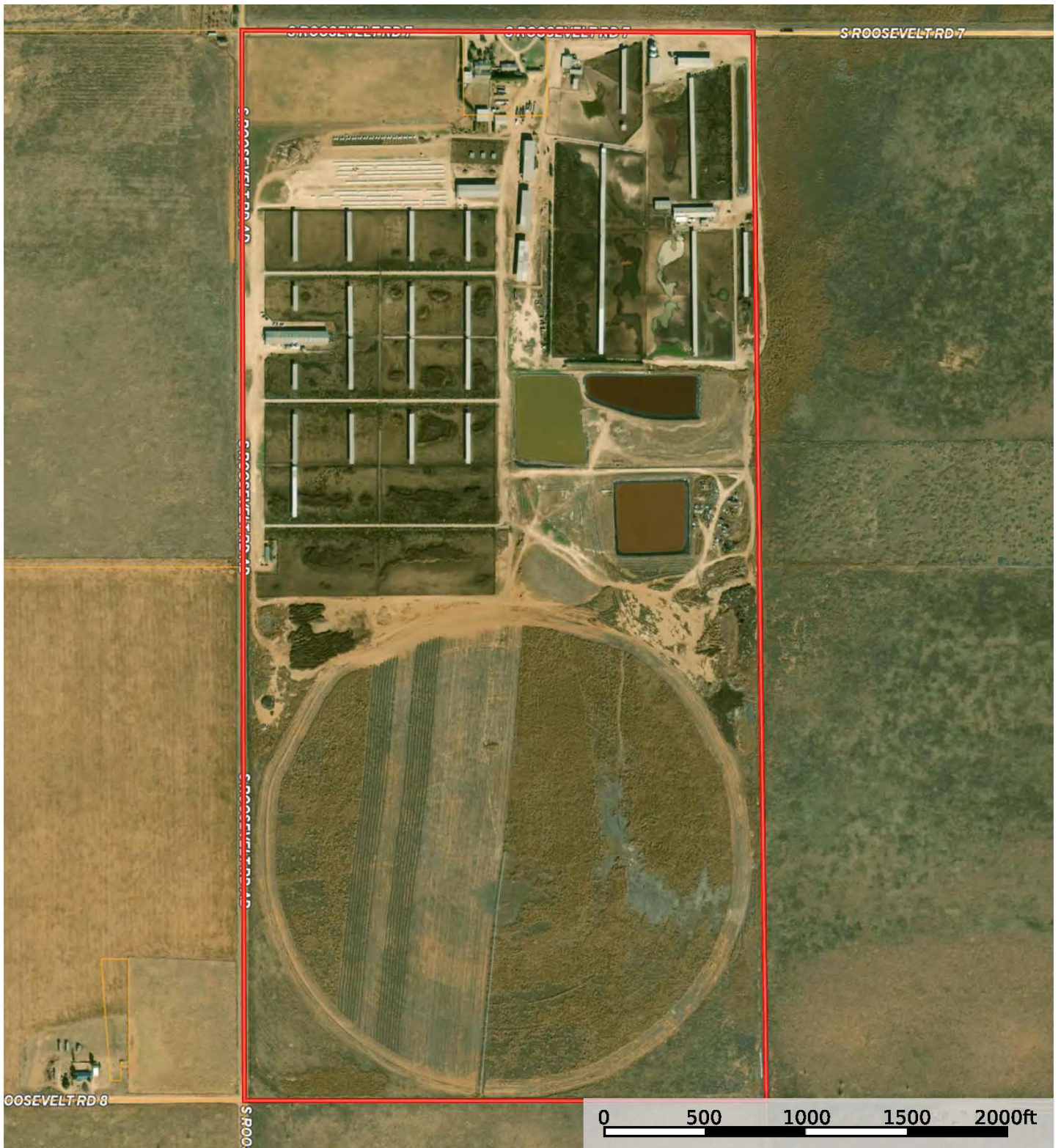
## REMARKS:

Tara Bonestroo Lic # REC-2023-0388

## CONTACT:

Tara Bonestroo  
806-535-9414  
tara@clifflandbrokers.com





Soil Map—Roosevelt County, New Mexico



Soil Map may not be valid at this scale.

Map Scale: 1:9,540 if printed on A portrait (8.5" x 11") sheet.

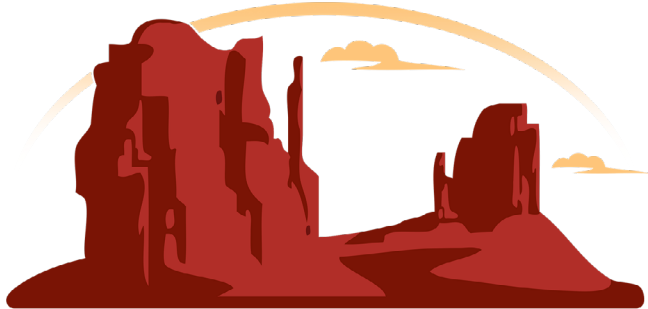
0 100 200 400 600 Meters

0 450 900 1800 2700 Feet

Map projection: Web Mercator Corner coordinates: WGS84 Edge tics: UTM Zone 13N WGS84







**Clift Land Brokers**

**TARA BONESTROO**

806.535.9414

TARA@CLIFTLANDBROKERS.COM

SCAN TO  
VIEW ONLINE



**WWW.CLIFTLANDBROKERS.COM | 805-355-9856**