

# 3 Bed, 1.5 Bath Home

Kemper County

326 Webb Goodin Rd, Preston, MS



**\$112,000**



**Tom  
Smith  
LAND AND  
HOMES**

Expect More. Get More.

# Property Information

## Location:

- 326 Webb Goodin Rd,  
Preston, MS 39354

## Property Use:

- Residential
- Investment

## Coordinates:

- 32.89125, -88.90135

# Property Highlights

- 1± Acre
- 1,161± Square Feet
- 3 Bedrooms, 1.5 Bathrooms



Expect More. Get More.

**JOHNNY  
LUKE**  
REALTOR®

Office: 662.268.6333

Cell: 662.803.2622

JohnnyLuke@TomSmithLand.com

**A Real Estate Expert  
You Can Trust!**



# The Residence

1,161± Sq Ft

This 3-bedroom, 1.5-bath home is located in Preston, MS.

This 1,161± square-foot home would be great for a first-time homebuyer or someone looking for an investment opportunity. Call Johnny to schedule a showing!



**JOHNNY  
LUKE**  
REALTOR®

Office: 662.268.6333

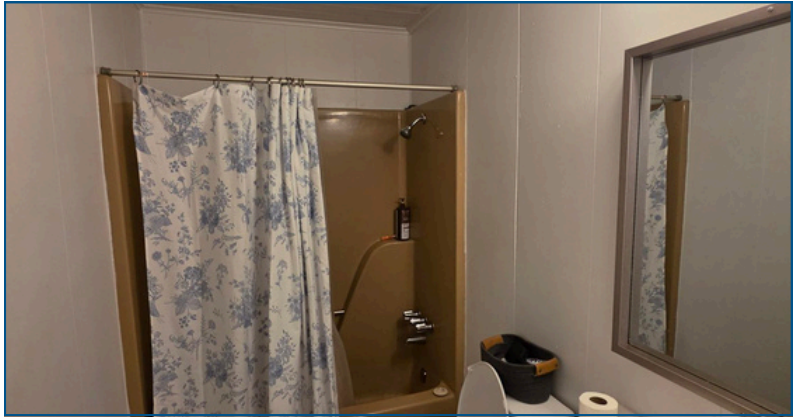
Cell: 662.803.2622

JohnnyLuke@TomSmithLand.com



Expect More. Get More.

# The Residence



**JOHNNY  
LUKE**  
REALTOR®

Office: 662.268.6333

Cell: 662.803.2622

JohnnyLuke@TomSmithLand.com

**Tom  
Smith  
LAND AND  
HOMES**

Expect More. Get More.

# The Residence



**JOHNNY  
LUKE**  
REALTOR®

Office: 662.268.6333

Cell: 662.803.2622

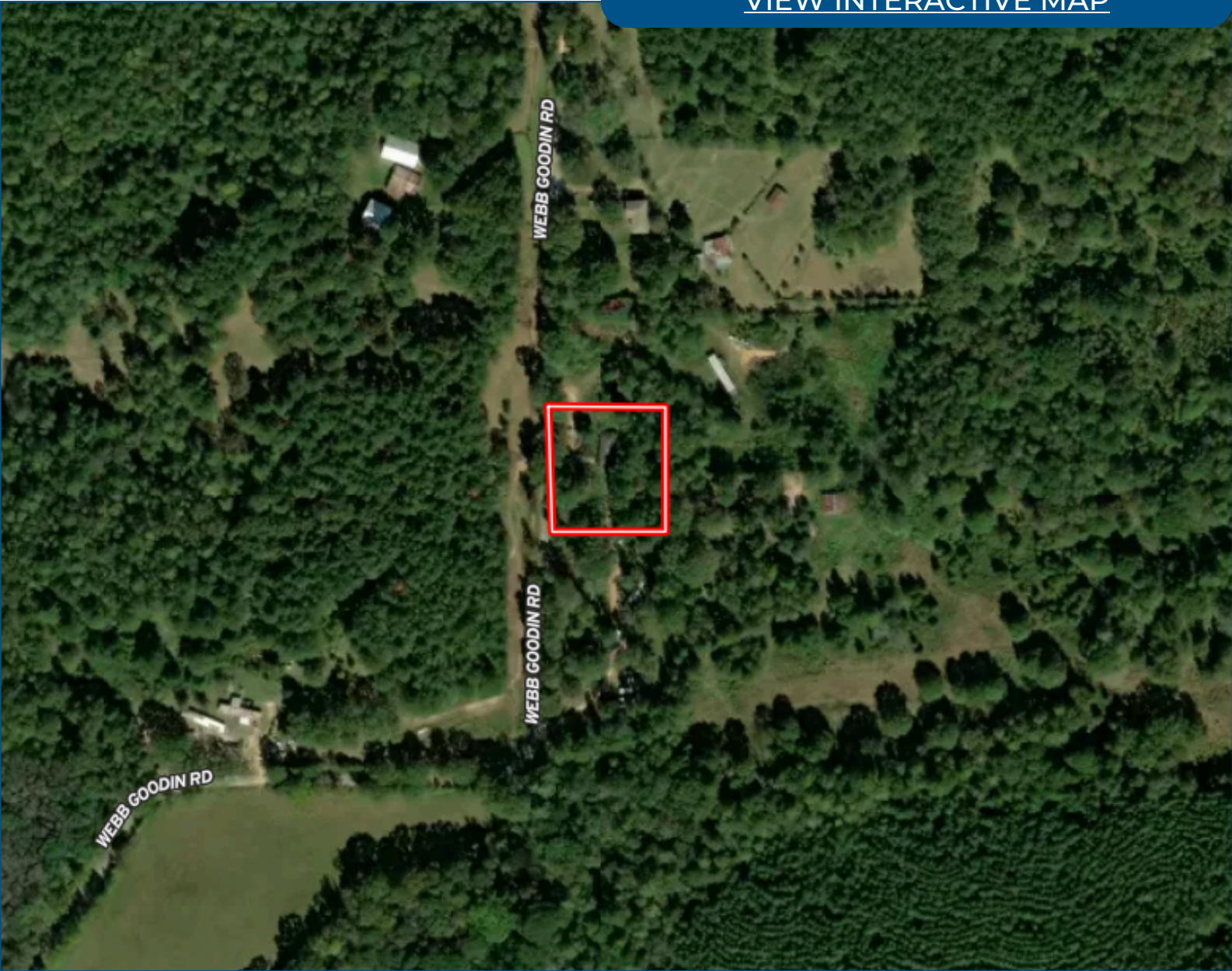
JohnnyLuke@TomSmithLand.com



Expect More. Get More.

# Aerial Map

[VIEW INTERACTIVE MAP](#)



**JOHNNY  
LUKE**  
REALTOR®

Office: 662.268.6333  
Cell: 662.803.2622

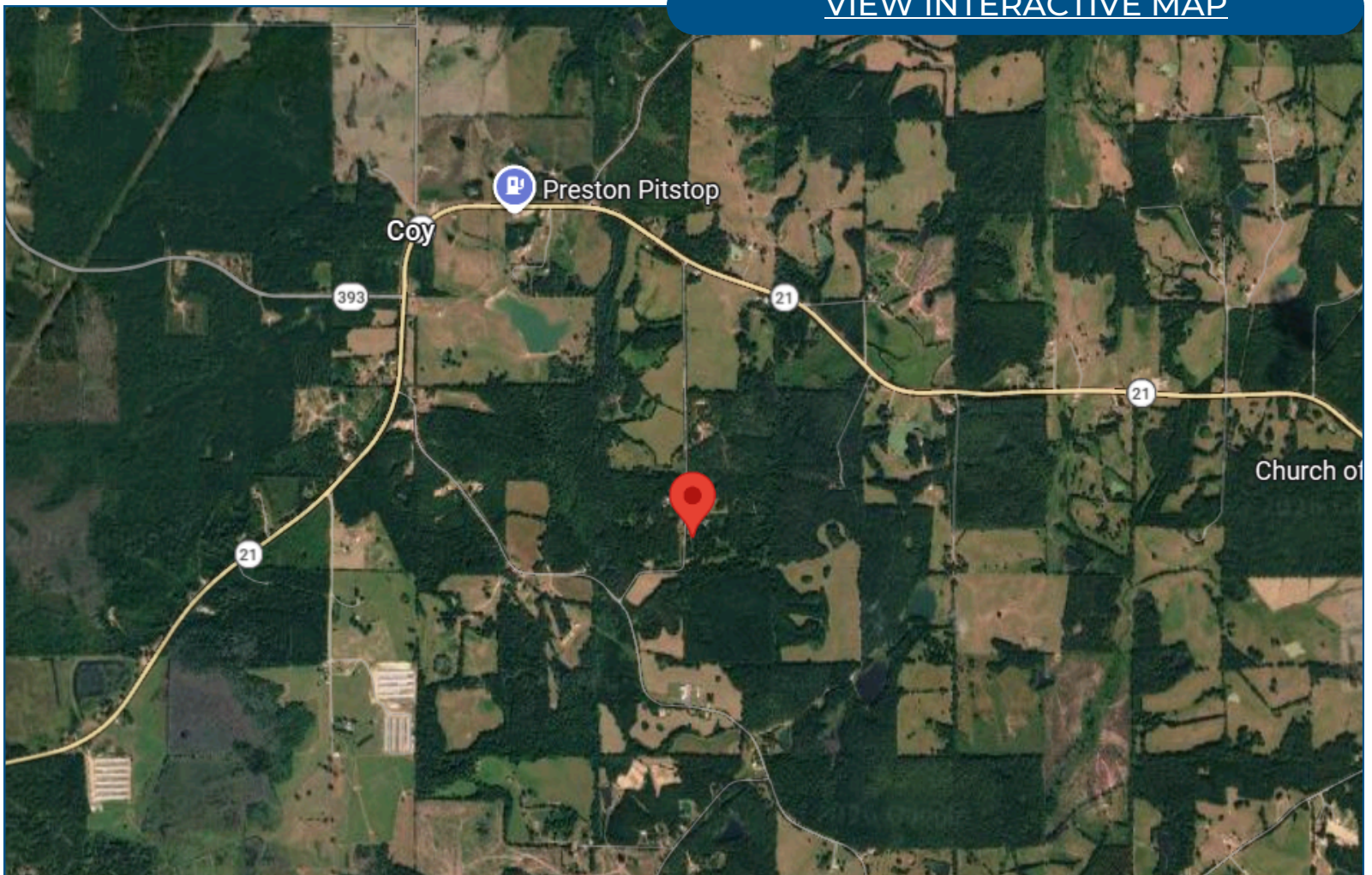
JohnnyLuke@TomSmithLand.com



Expect More. Get More.

# Directional Map

[VIEW INTERACTIVE MAP](#)



## Directions from Preston, MS:

Head toward Shuqualak Rd for 0.6 miles. Turn left onto Shuqualak Rd for 1.6 miles. Continue onto Burrage Rd for 2.5 miles. Continue onto Stokes Rd for 2 miles. Turn left onto MS-21 S for 0.3 miles. Turn right onto Webb Goodin Rd in 0.8 miles, and the destination will be on the left.

**JOHNNY  
LUKE**  
REALTOR®

Office: 662.268.6333  
Cell: 662.803.2622

JohnnyLuke@TomSmithLand.com

