



1865 N HWY 326, KOUNTZE, TEXAS, 77625
HARDIN COUNTY

74± ACRES | \$433,202

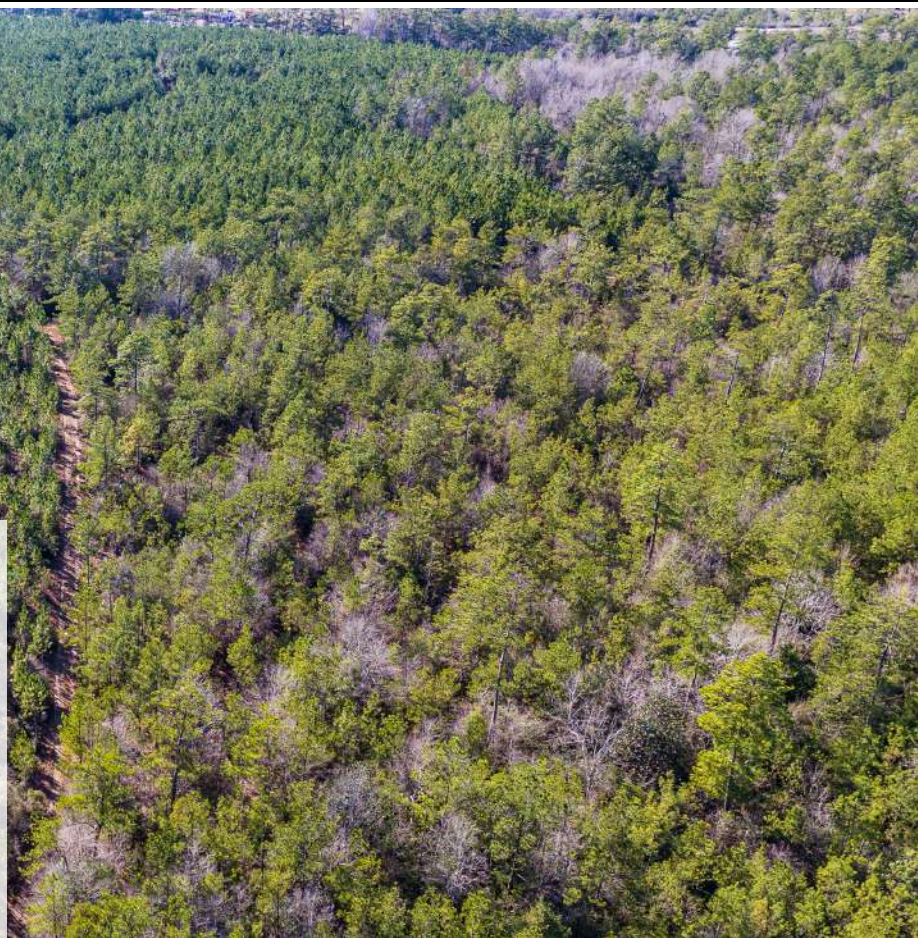




THE INFORMATION PROVIDED HEREIN IS BELIEVED TO BE ACCURATE BUT IS NOT GUARANTEED BY ANDRUS LAND GROUP. DETAILS ARE SUBJECT TO CHANGE AT ANY TIME WITHOUT NOTICE.

PROPERTY DESCRIPTION.

OWNER FINANCING AVAILABLE!! Nestled just beyond the Kountze city limits, this 74.689-acre tract offers a rare combination of convenient access and private, natural seclusion. Featuring frontage along Hwy 326 and located just 1.5 miles from the intersection of Hwy 326 and Hwy 69, the property is well positioned for future development or long-term investment. The land is heavily wooded with a diverse mix of pine and hardwoods, creating a scenic and tranquil setting well suited for hunting, recreational use, or a private retreat. Located directly across from a power substation, the property also presents strong potential for solar development. Whether envisioned as a development opportunity, renewable energy site, or a peaceful escape into nature, this versatile property offers the space and flexibility to bring your vision to life



THE INFORMATION PROVIDED HEREIN IS BELIEVED TO BE ACCURATE BUT IS NOT GUARANTEED BY ANDRUS LAND GROUP. DETAILS ARE SUBJECT TO CHANGE AT ANY TIME WITHOUT NOTICE.



PROPERTY FEATURES

Creek, Hunting, Electricity, Hwy-County Rd Frontage, Development Potential, Timber



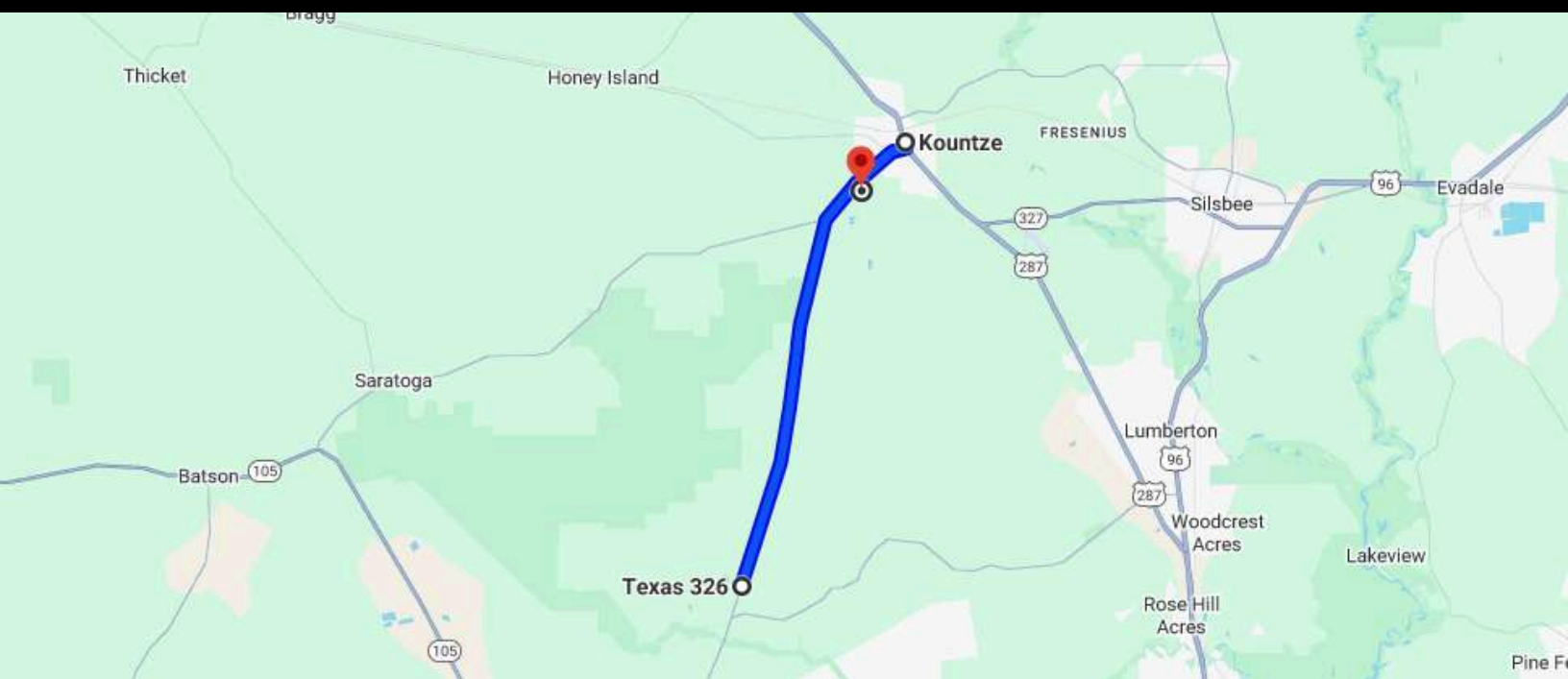
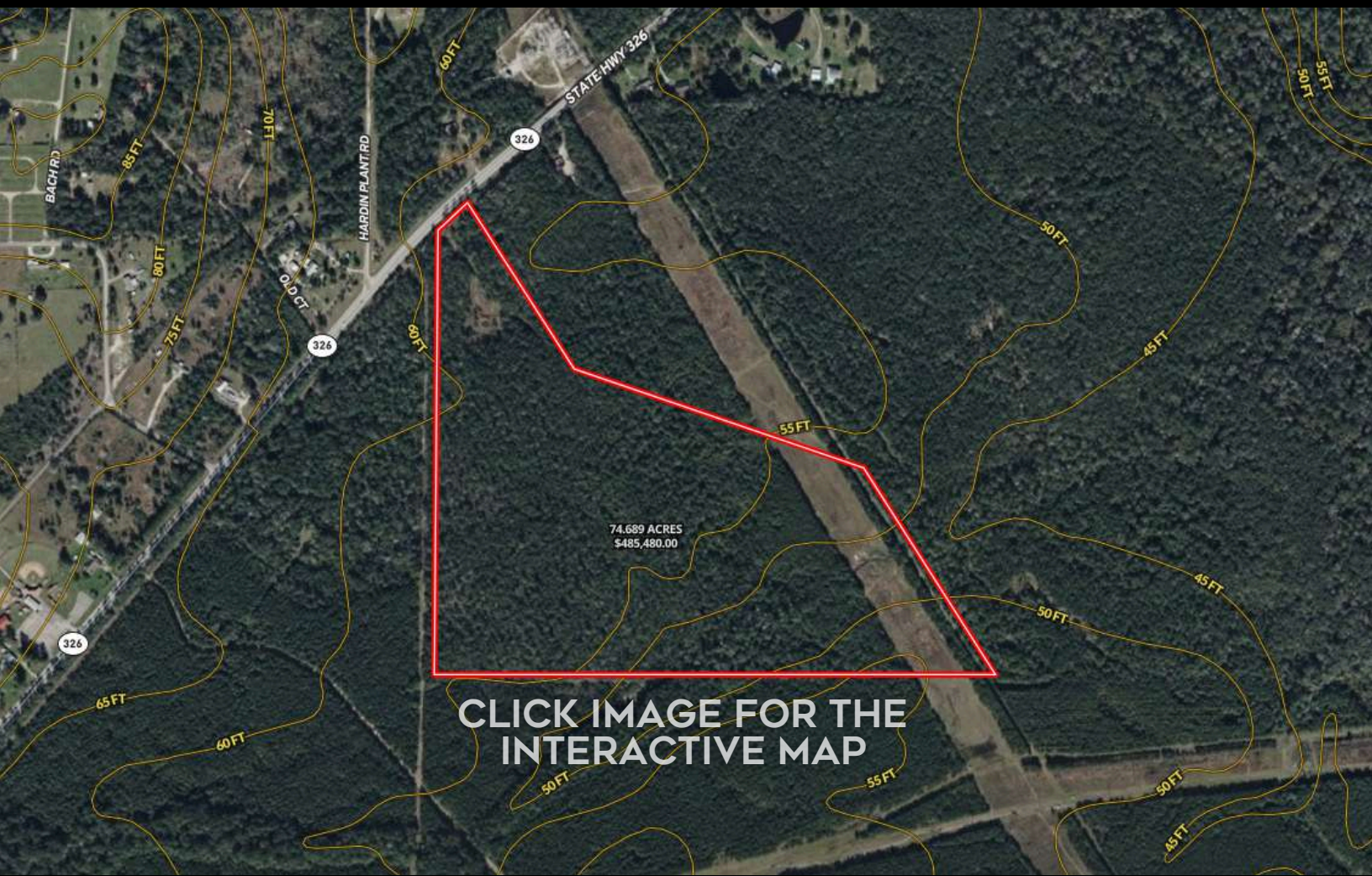
THE INFORMATION PROVIDED HEREIN IS BELIEVED TO BE ACCURATE BUT IS NOT GUARANTEED BY ANDRUS LAND GROUP. DETAILS ARE SUBJECT TO CHANGE AT ANY TIME WITHOUT NOTICE.

1865 N HWY 326, KOUNTZE, TEXAS, 77625

HARDIN COUNTY



THE INFORMATION PROVIDED HEREIN IS BELIEVED TO BE ACCURATE BUT IS NOT GUARANTEED BY ANDRUS LAND GROUP. DETAILS ARE SUBJECT TO CHANGE AT ANY TIME WITHOUT NOTICE.



NAVIGATION DIRECTIONS

From the intersection of Hwy 326 & Hwy 69 in Kountze:
Travel west on Hwy 326 for 1.5 miles. Property will be on your left.

CHAD ANDRUS, ALC ACCREDITED LAND CONSULTANT

chad@andruslandgroup.com

832-402-9211

www.andruslandgroup.com



ALL MATERIALS AND INFORMATION RECEIVED OR DERIVED FROM ANDRUS LAND GROUP AND ITS DIRECTORS, OFFICERS, AGENTS, ADVISORS, AFFILIATES AND/OR ANY THIRD PARTY SOURCES ARE PROVIDED WITHOUT REPRESENTATION OR WARRANTY AS TO COMPLETENESS, VERACITY, OR ACCURACY, CONDITION OF THE PROPERTY, COMPLIANCE OR LACK OF COMPLIANCE WITH APPLICABLE GOVERNMENTAL REQUIREMENTS, DEVELOPABILITY OR SUITABILITY, FINANCIAL PERFORMANCE OF THE PROPERTY, PROJECTED FINANCIAL PERFORMANCE OF THE PROPERTY FOR ANY PARTY'S INTENDED USE OR ANY AND ALL OTHER MATTERS. NEITHER ANDRUS LAND GROUP, ITS DIRECTORS, OFFICERS, AGENTS, ADVISORS, OR AFFILIATES MAKES ANY REPRESENTATION OR WARRANTY, EXPRESS OR IMPLIED, AS TO ACCURACY OR COMPLETENESS OF THE MATERIALS OR INFORMATION PROVIDED, DERIVED, OR RECEIVED. MATERIALS AND INFORMATION FROM ANY SOURCE, WHETHER WRITTEN OR VERBAL, THAT MAY BE FURNISHED FOR REVIEW ARE NOT A SUBSTITUTE FOR A PARTY'S ACTIVE CONDUCT OF ITS OWN DUE DILIGENCE TO DETERMINE THESE AND OTHER MATTERS OF SIGNIFICANCE TO SUCH PARTY. ANDRUS LAND GROUP WILL NOT INVESTIGATE OR VERIFY ANY SUCH MATTERS OR CONDUCT DUE DILIGENCE FOR A PARTY UNLESS OTHERWISE AGREED IN WRITING. EACH PARTY SHALL CONDUCT ITS OWN INDEPENDENT INVESTIGATION AND DUE DILIGENCE.

Ranch. financing made simple



WINNIE OFFICE

NMLS493828 | 409.400.4066 | capitalfarmcredit.com



Anthony Vaughan