

**14.8± ACRES**

**Marshall County**

**Holly Springs, MS 38635**



**\$68,900**



*Expect More. Get More.*

**TomSmithLandandHomes.com**

**Office: 601.898.2772**

# Property Information

## Location:

- McMillan Drive  
Holly Springs, MS

## Coordinates:

- 34.7857, -89.4698

## Property Use:

- Private Estate Lot
- Family Homestead
- Investment Opportunity

# Property Highlights

- 14.8± Acres
- Tucked away at the end of a quiet cul-de-sac
- Wooded Entrance
- Private Lot



**LESLIE PINNIX** REALTOR®  
O: 662.771.1101 | C: 662.820.2205  
Leslie@TomSmithLand.com



**DAVID BELDEN** ASSOCIATE BROKER, ALC®  
O: 601.898.2772 | C: 601.415.3884  
DBelden@TomSmithLand.com

**Expect More. Get More.**

[TomSmithLandandHomes.com](http://TomSmithLandandHomes.com)

*The Real Estate Experts You Can Trust!*

Information is believed to be accurate but not guaranteed.



# The Property

# 14.8± Acres

Discover the perfect place to build your dream home on this beautiful 14.8± acre tract in Marshall County. Tucked away at the end of a quiet cul-de-sac, this property offers the privacy and peaceful setting that's getting harder to find. A wooded entrance welcomes you in, creating a natural buffer from the road and a scenic backdrop for a future homesite. The acreage provides plenty of space for a custom home, workshop, barn, or even a small hobby farm. With mature trees and a private setting, this tract offers both seclusion and flexibility. Whether you're looking for a private estate lot, a family homestead, or an investment in growing Marshall County, this property checks all the boxes. Opportunities like this—acreage, privacy, and location—don't come along often.



**LESLIE PINNIX**

REALTOR®

O: 662.771.1101 | C: 662.820.2205

Leslie@TomSmithLand.com



**DAVID BELDEN**

ASSOCIATE BROKER, ALC®

O: 601.898.2772 | C: 601.415.3884

DBelden@TomSmithLand.com

**Expect More. Get More.**

*The Real Estate Experts You Can Trust!*



**TomSmithLandandHomes.com**

Information is believed to be accurate but not guaranteed.

# Aerial Photos



**LESLIE PINNIX**

REALTOR®

O: 662.771.1101 | C: 662.820.2205

Leslie@TomSmithLand.com

**DAVID BELDEN**

ASSOCIATE BROKER, ALC®

O: 601.898.2772 | C: 601.415.3884

DBelden@TomSmithLand.com

**Expect More. Get More.**

*The Real Estate Experts You Can Trust!*

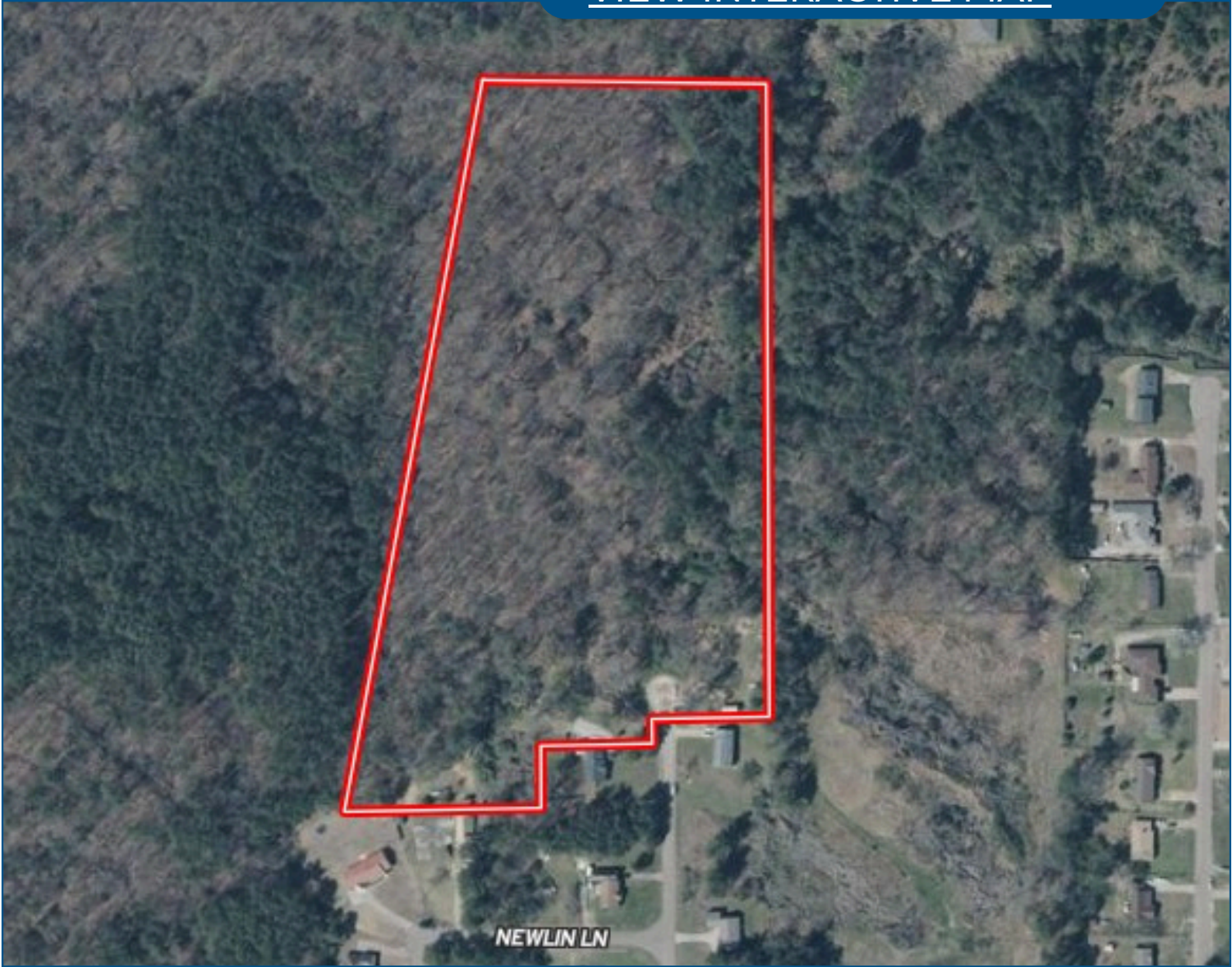


**TomSmithLandandHomes.com**

Information is believed to be accurate but not guaranteed.

# Aerial Map

[VIEW INTERACTIVE MAP](#)



**LESLIE PINNIX**

REALTOR®

O: 662.771.1101 | C: 662.820.2205

Leslie@TomSmithLand.com



**DAVID BELDEN**

ASSOCIATE BROKER, ALC®

O: 601.898.2772 | C: 601.415.3884

DBelden@TomSmithLand.com

**Expect More. Get More.**

*The Real Estate Experts You Can Trust!*

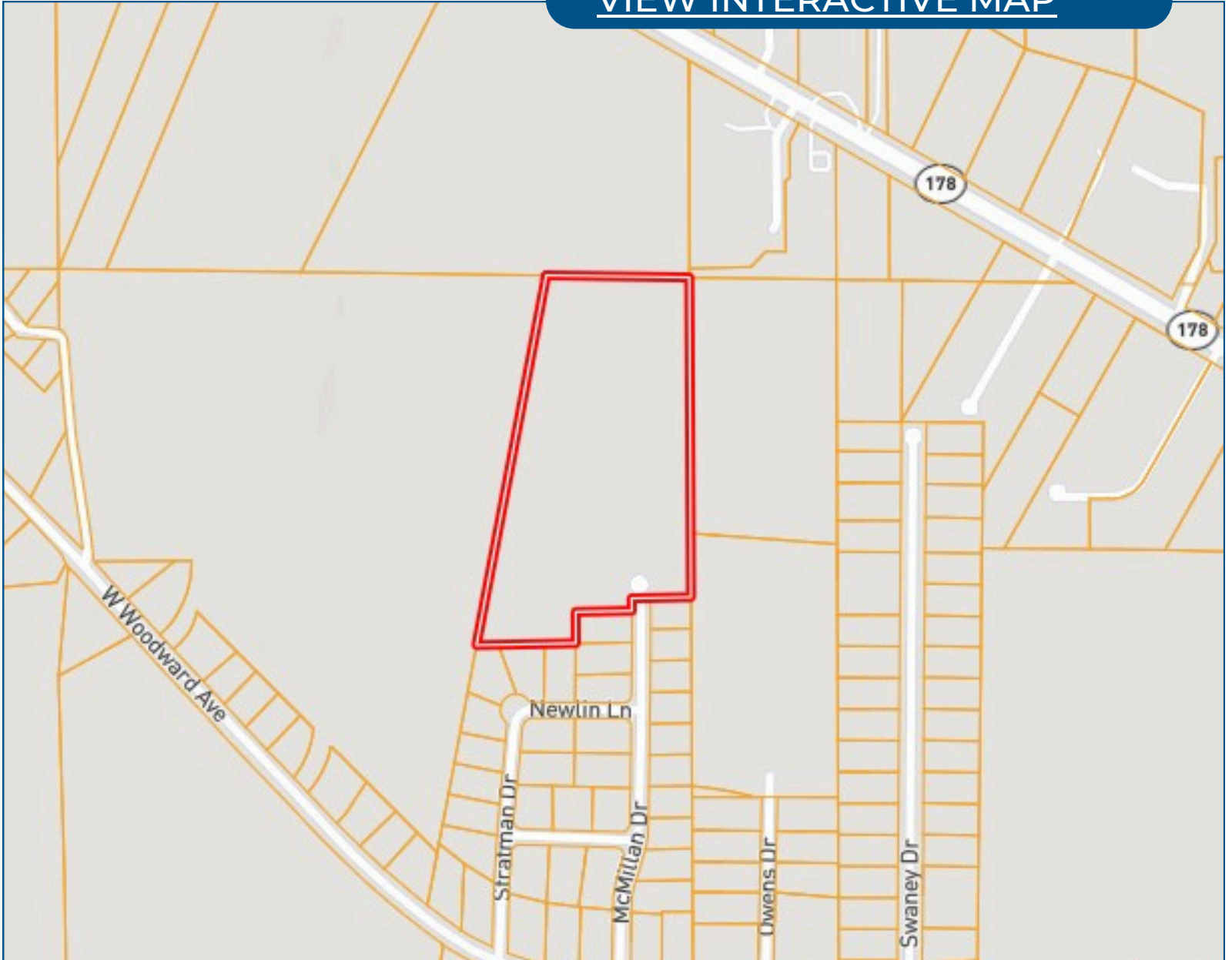


[TomSmithLandandHomes.com](http://TomSmithLandandHomes.com)

Information is believed to be accurate but not guaranteed.

# Ownership Map

[VIEW INTERACTIVE MAP](#)



**LESLIE PINNIX**

REALTOR®

O: 662.771.1101 | C: 662.820.2205

Leslie@TomSmithLand.com



**DAVID BELDEN**

ASSOCIATE BROKER, ALC®

O: 601.898.2772 | C: 601.415.3884

DBelden@TomSmithLand.com

**Expect More. Get More.**

*The Real Estate Experts You Can Trust!*

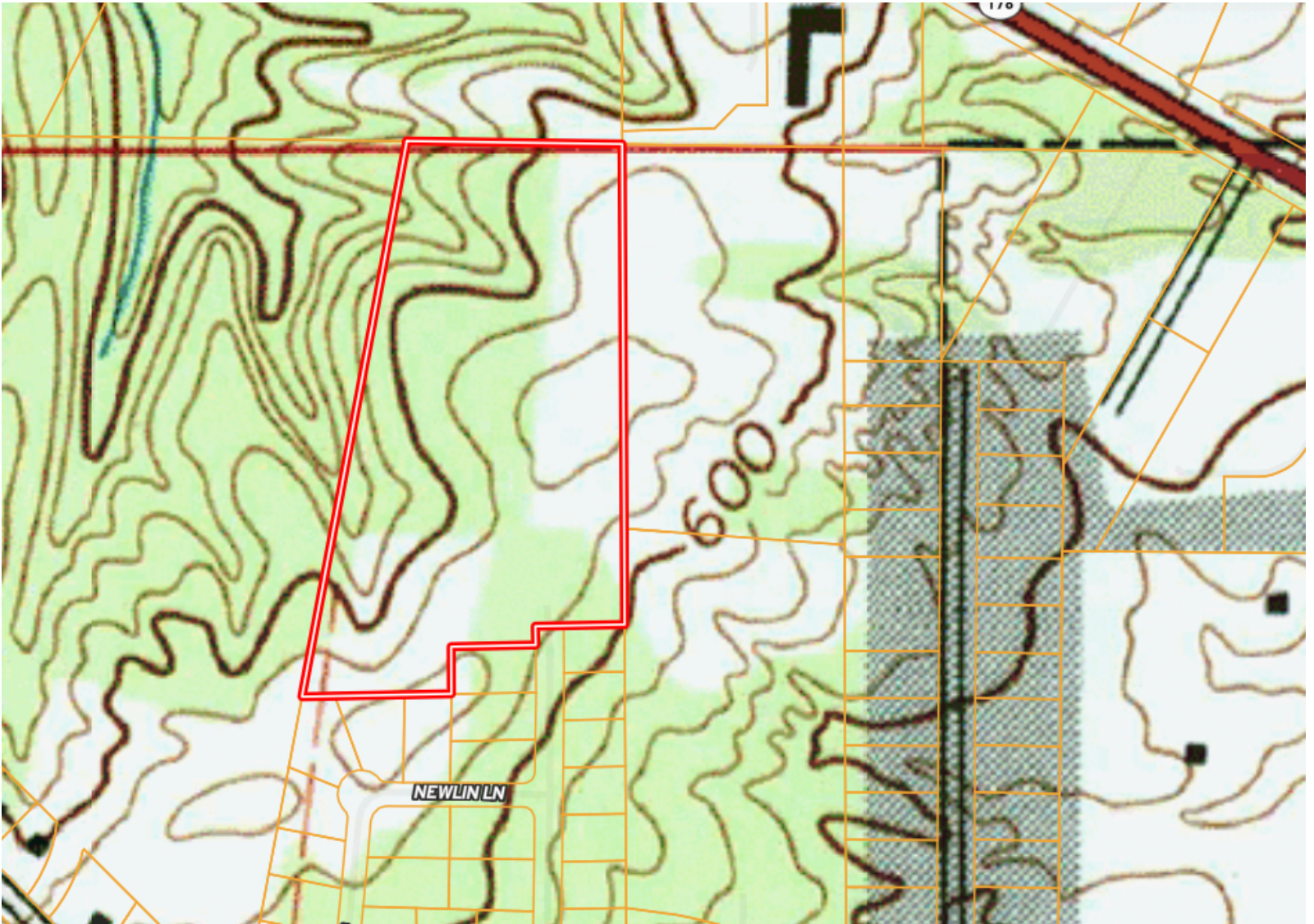


[TomSmithLandandHomes.com](http://TomSmithLandandHomes.com)

Information is believed to be accurate but not guaranteed.

# Topo Map

[VIEW INTERACTIVE MAP](#)



**LESLIE PINNIX**  
REALTOR®  
O: 662.771.1101 | C: 662.820.2205  
Leslie@TomSmithLand.com



**DAVID BELDEN**  
ASSOCIATE BROKER, ALC®  
O: 601.898.2772 | C: 601.415.3884  
DBelden@TomSmithLand.com

**Expect More. Get More.**

*The Real Estate Experts You Can Trust!*

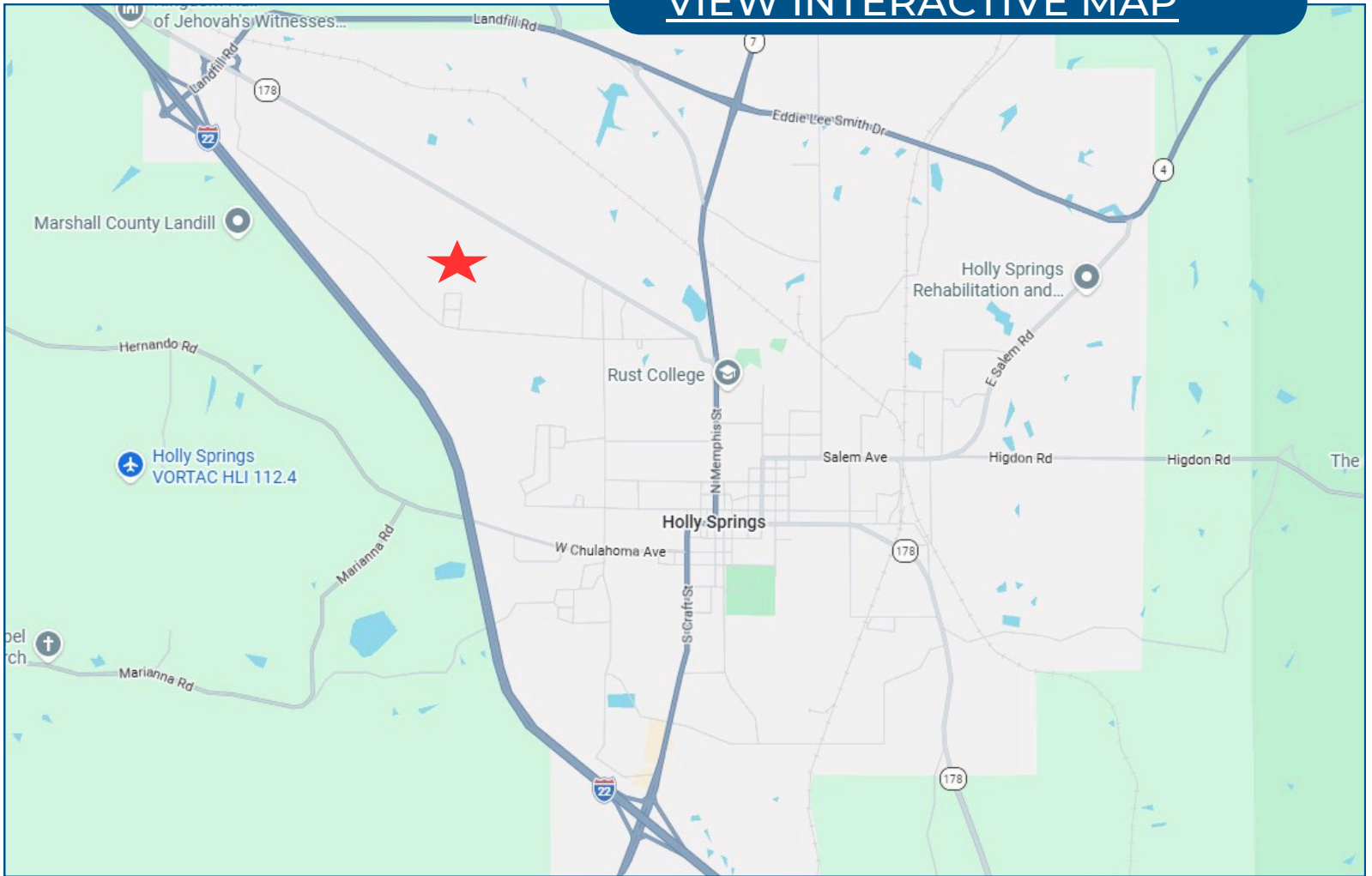


[TomSmithLandandHomes.com](http://TomSmithLandandHomes.com)

Information is believed to be accurate but not guaranteed.

# Directional Map

[VIEW INTERACTIVE MAP](#)



From the I-22/Hwy 7 Intersection Near Holly Springs, MS: Head northwest on I-22/US-78 toward the Landfill Road exit (Exit 26), take the Landfill Road exit and turn right onto Landfill Road (which runs off US-78 toward the city area) and follow Landfill Road as it leads you into Holly Springs, then turn left onto MS-178/Van Dorn Ave once you reach the main local roads, continue on Van Dorn Ave, turn right onto J M Ash Drive, and the turn left onto Crescent Meadow Dr and the property is at the end of the street

**LESLIE PINNIX**

REALTOR®

O: 662.771.1101 | C: 662.820.2205

Leslie@TomSmithLand.com



**DAVID BELDEN**

ASSOCIATE BROKER, ALC®

O: 601.898.2772 | C: 601.415.3884

DBelden@TomSmithLand.com

**Expect More. Get More.**

[TomSmithLandandHomes.com](http://TomSmithLandandHomes.com)

*The Real Estate Experts You Can Trust!*

Information is believed to be accurate but not guaranteed.

