

# 42± Acres With a 10± Acre Duck Hole

Leflore County

Airport Road, Greenwood, MS, 38930



**\$160,000**



Expect More. Get More.

# Property Information

## Location:

- 10 Minutes to Greenwood, MS (6.8 Miles)

## Property Use:

- Hunting
- Recreation

## Coordinates:

- 33.46255, -90.0906

# Property Highlights

- 42± Acres
- Leflore County
- 10± Acre Duck Hole
- Mixed Hardwoods
- Deer Trails and Signs



**ANTHONY  
STEEN**

ALC®, REALTOR®

Office: 601.898.2772

Cell: 662.645.5151

Anthony@TomSmithLand.com



Expect More. Get More.

**A Real Estate Expert  
You Can Trust!**



# *The Property*

42± Acres

42± acres for sale off Airport Road in Greenwood, Leflore County.

This property includes a 10± acre duck hole, providing ample cover with small willows and sage grass along the bank.

You also have the option to install your own blind.

The rest of the land features mixed hardwoods, with plenty of deer trails and signs.

Contact Anthony Steen today to schedule a visit to this 42± acre tract in Leflore County.

**ANTHONY  
STEEN**

ALC®, REALTOR®

Office: 601.898.2772

Cell: 662.645.5151

Anthony@TomSmithLand.com



Expect More. Get More.

# The Property



**ANTHONY  
STEEN**

ALC®, REALTOR®

Office: 601.898.2772

Cell: 662.645.5151

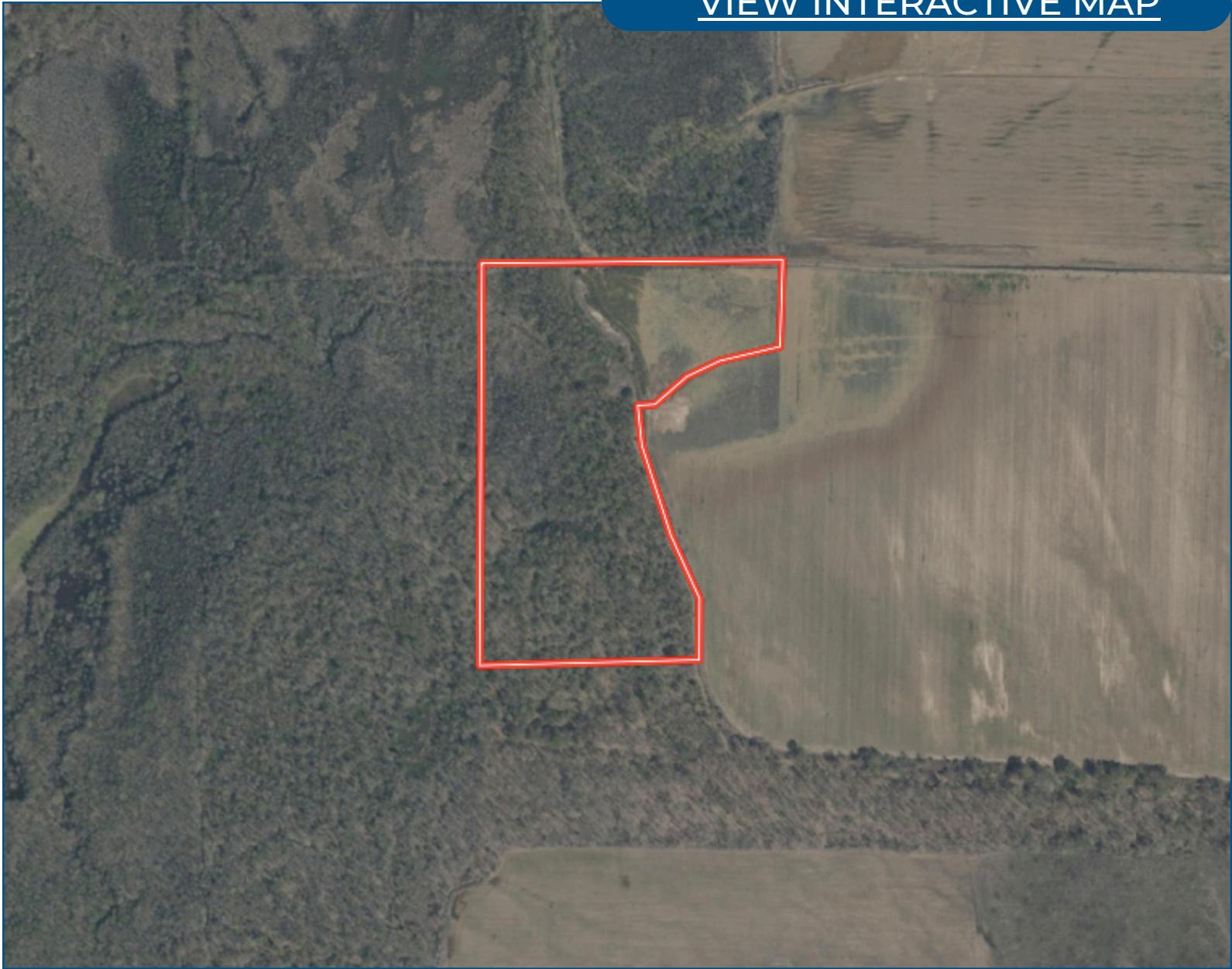
Anthony@TomSmithLand.com



Expect More. Get More.

# Aerial Map

[VIEW INTERACTIVE MAP](#)



**ANTHONY  
STEEN**

ALC®, REALTOR®

Office: 601.898.2772

Cell: 662.645.5151

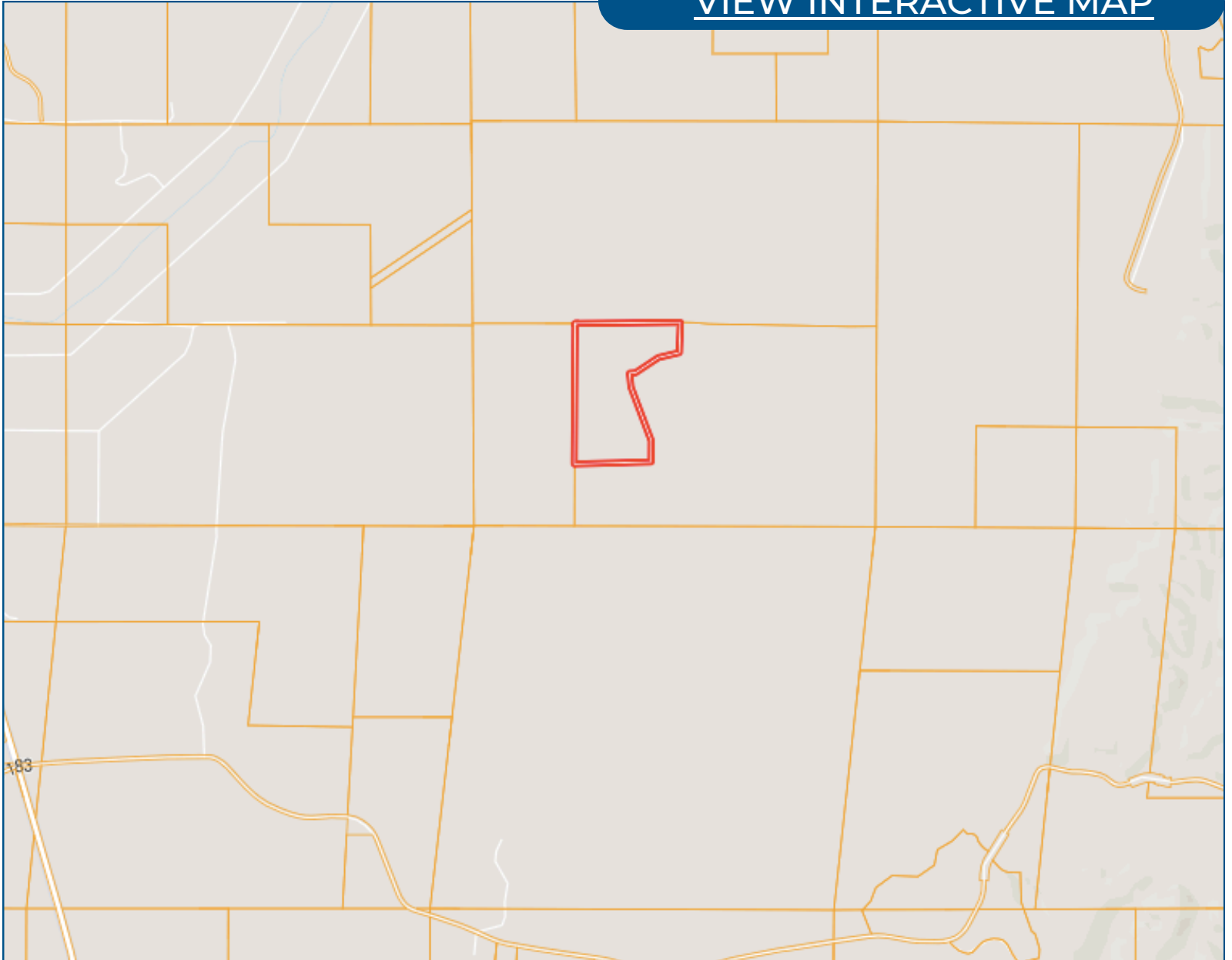
Anthony@TomSmithLand.com



Expect More. Get More.

# Ownership Map

[VIEW INTERACTIVE MAP](#)



**ANTHONY  
STEEN**

ALC®, REALTOR®

Office: 601.898.2772

Cell: 662.645.5151

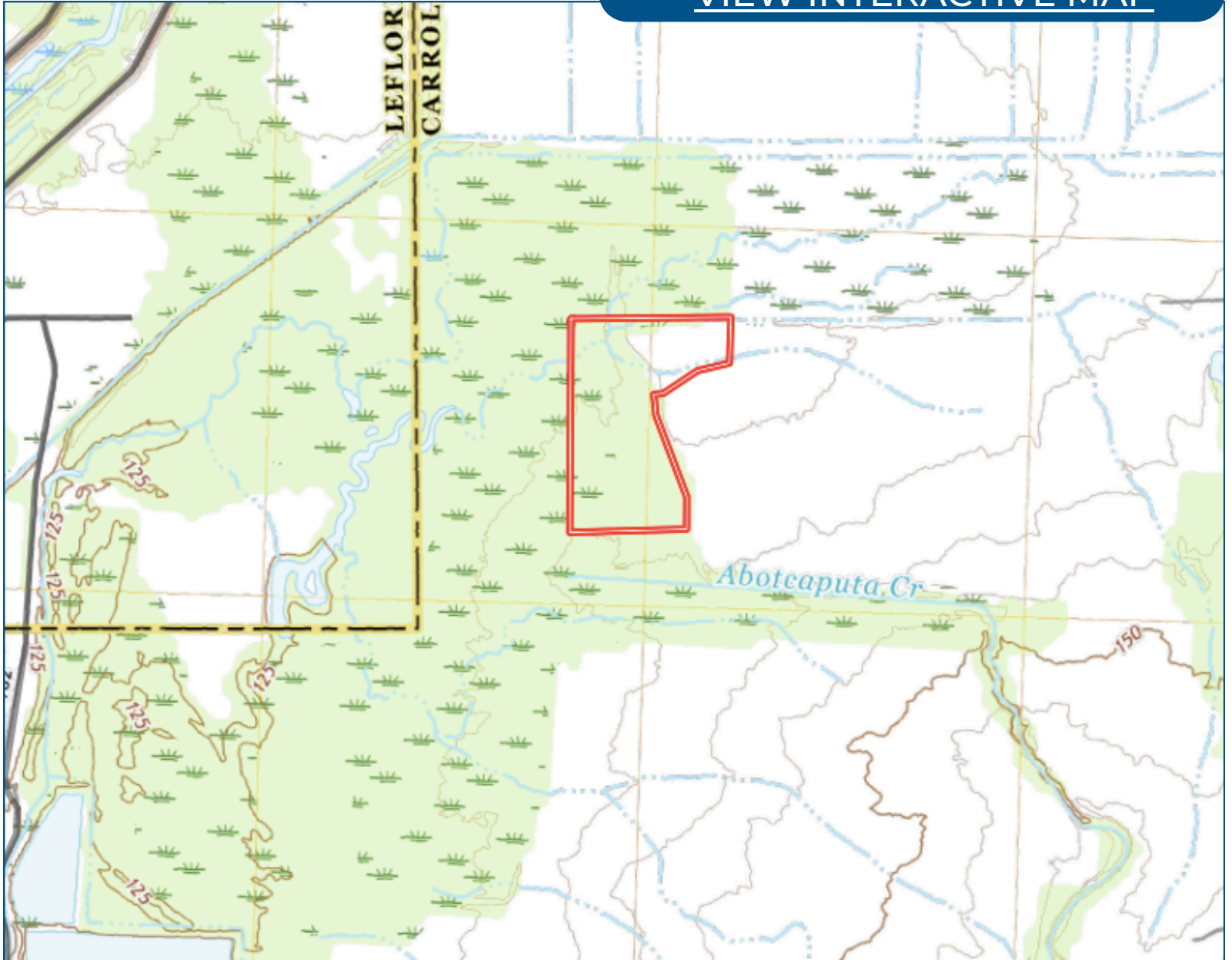
[Anthony@TomSmithLand.com](mailto:Anthony@TomSmithLand.com)



Expect More. Get More.

# Topo Map

[VIEW INTERACTIVE MAP](#)



**ANTHONY  
STEEN**

ALC®, REALTOR®

Office: 601.898.2772

Cell: 662.645.5151

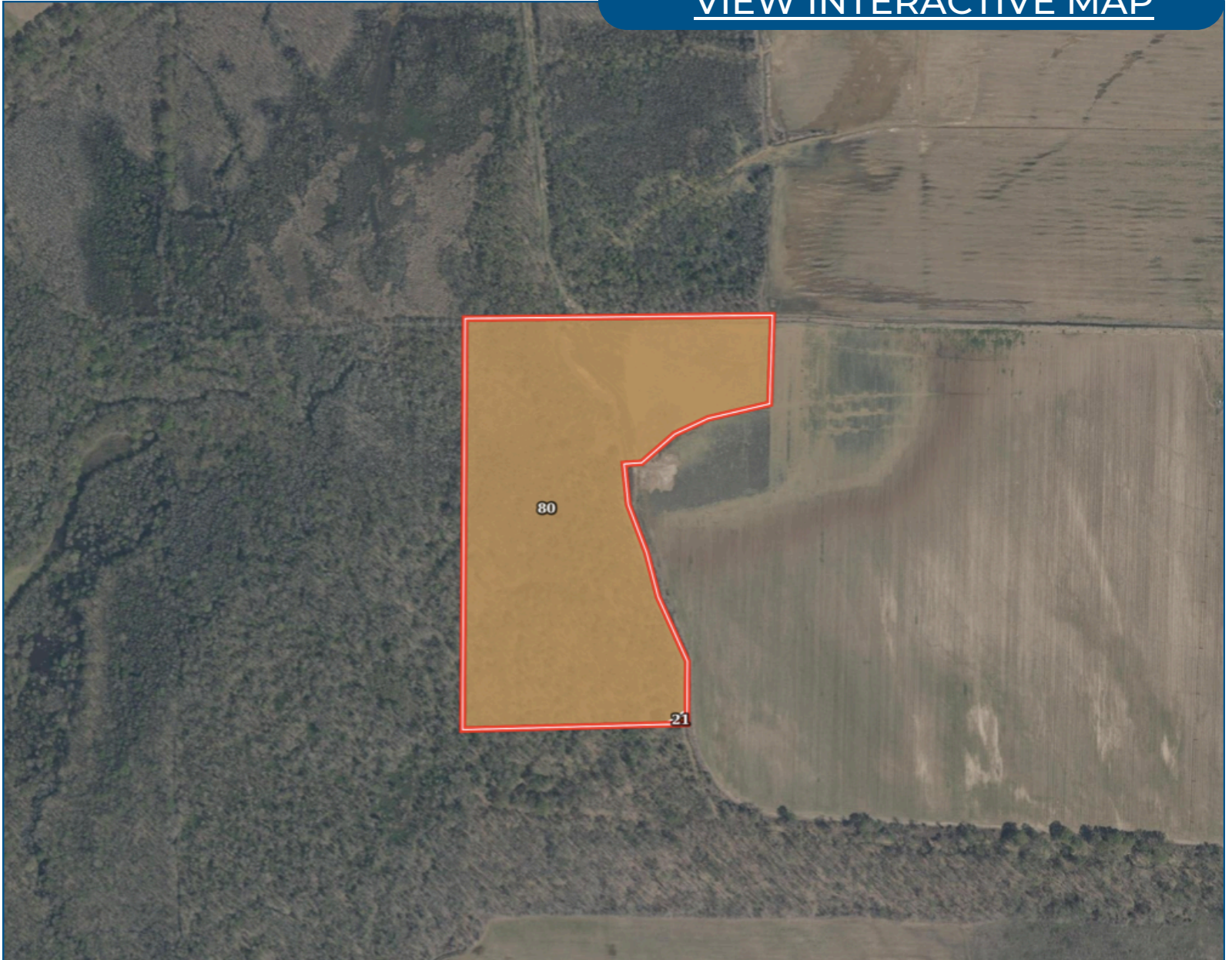
Anthony@TomSmithLand.com



Expect More. Get More.

# Soil Map

[VIEW INTERACTIVE MAP](#)



**ANTHONY  
STEEN**

ALC®, REALTOR®

Office: 601.898.2772

Cell: 662.645.5151

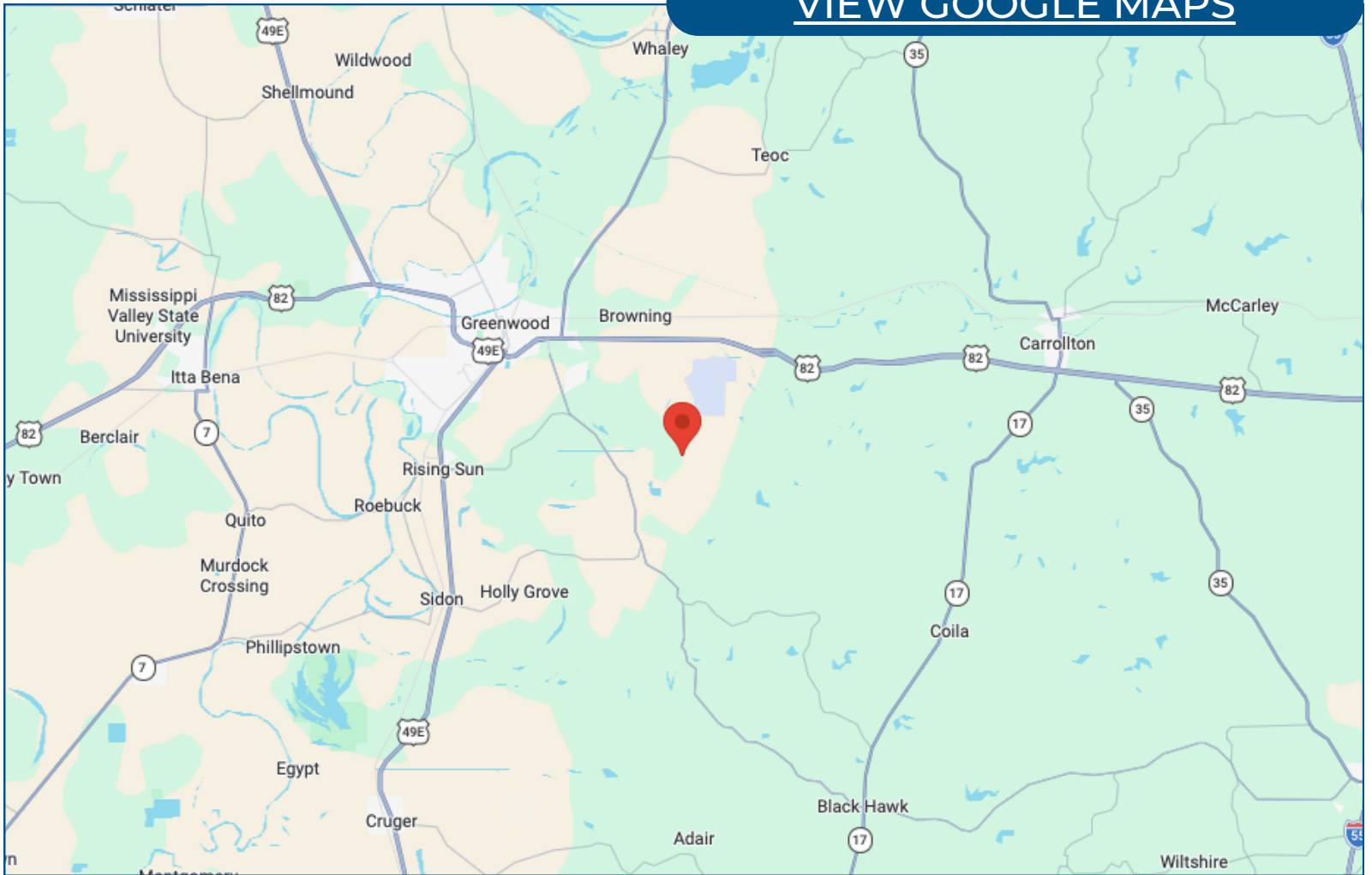
Anthony@TomSmithLand.com



Expect More. Get More.

# Directional Map

[VIEW GOOGLE MAPS](#)



## Directions from US-49E & US-82, Greenwood, MS 38930:

Travel east on US-82 E for 1.4 miles. Turn right onto MS-430 E for 4.1 miles, then turn left for 0.3 miles. Turn right, after 1.0 mile, the land will be on the right.

**ANTHONY  
STEEN**

ALC®, REALTOR®

Office: 601.898.2772

Cell: 662.645.5151

Anthony@TomSmithLand.com



Expect More. Get More.

# Listing Agent



## Anthony Steen

ALC, Realtor & Land Specialist

Anthony was born in Bolivar County, but his family moved shortly after to Clarksdale, MS. He spent his primary educational and athletic years attending and playing sports at Lee Academy. As a child, he played baseball, football, basketball, soccer and even threw shot put and disc for track. After graduating in 2009, Anthony continued his education and athletic career for the next five years at the University of Alabama on a football scholarship. He majored in Health Environmental Science and completed his bachelor's degree and was a part of two SEC Championship and three National Championship teams with the Crimson Tide. After college, Anthony played for the Arizona Cardinals and the Miami Dolphins in the National Football League for 4 years until he decided to retire and come back to the Mississippi Delta where he grew up.

Growing up, Anthony was an avid hunter and fisherman who loved spending time helping his grandfather on the farm growing cotton and soybeans. His father and grandfather helped instill the importance of and a love for taking care of the land and wildlife around him. He enjoys all types of hunting from deer, duck, and turkey, to hogs, frogs, and pheasant. After retiring from the NFL, Anthony knew he wanted to come back home to the land he loved so much as a child.

Anthony currently resides in Tallahatchie County where he farmed soybeans with his family for a few years. After much deliberation and praying, Anthony knew it was time to start a new career path. He was certain he wanted to find a way to share his passion for the outdoors with others while staying true to his country roots. As a college athlete, Anthony learned hard work, dedication, discipline, trust, and how to work with others. These traits along with Anthony's personality, honesty, and knowledge of the land make him the perfect agent for you.

**OFFICE: 601.898.2772**

**CELL: 662.645.5151**

[Anthony@TomSmithLand.com](mailto:Anthony@TomSmithLand.com)

**CALL ANTHONY STEEN  
TODAY!**

