

Three Bedroom/Two Bath Home

607 East Percy Street

Indianola, Sunflower County, MS



\$159,500



Expect More. Get More.

Property Information

Location:

- Indianola, MS

Property Use:

- Residential

Coordinates:

- 33.4532, -90.6413

Property Highlights

- Three Bedroom / Two Bath
- 1,900± base sqft / 2,100± adjusted sqft
- Built 1950
- Hardwood Flooring
- Gas Fireplace
- Stainless Appliances
- Granite Countertops
- Two Car Carport
- Back Patio & Front Porch



**EMERSON
LOVELACE**
REALTOR®

Office: 662.441.2500
Cell: 601.715.3302

Emerson@TomSmithLand.com

**A Real Estate Expert
You Can Trust!**



The Residence

1,900± sq. ft.

Welcome home to this beautifully maintained 3-bedroom, 2-bath residence offering approximately 1,900± square feet of living space and 2,100± adjusted square feet of comfortable living. Built in 1950, this home blends classic charm with modern updates to create the perfect place for family living and entertaining. Inside, you'll find stunning hardwood flooring throughout much of the home, adding warmth and character to every room. The inviting living area features a cozy gas fireplace, creating the perfect gathering space during cooler months. The kitchen is equipped with stainless steel appliances, granite countertops, and ample workspace for everyday cooking and hosting guests. The spacious floor plan offers comfortable bedrooms, well-appointed bathrooms, and plenty of room to accommodate your lifestyle. Outside, enjoy relaxing mornings on the welcoming front porch or unwind in the evenings on the back patio overlooking the yard. Additional features include a convenient two-car carport and the timeless appeal of a home built to last.



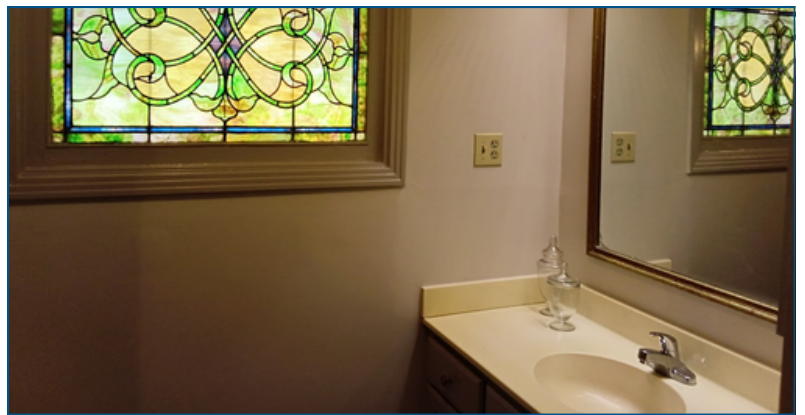
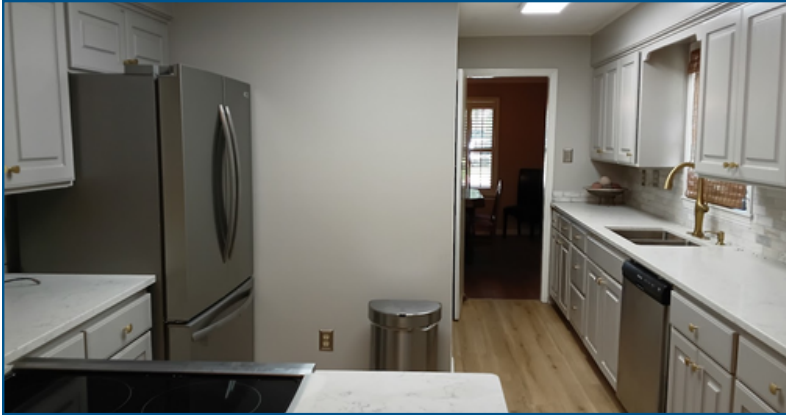
**EMERSON
LOVELACE**
REALTOR®

Office: 662.441.2500
Cell: 601.715.3302

Emerson@TomSmithLand.com



The Residence



**EMERSON
LOVELACE**
REALTOR®

Office: 662.441.2500

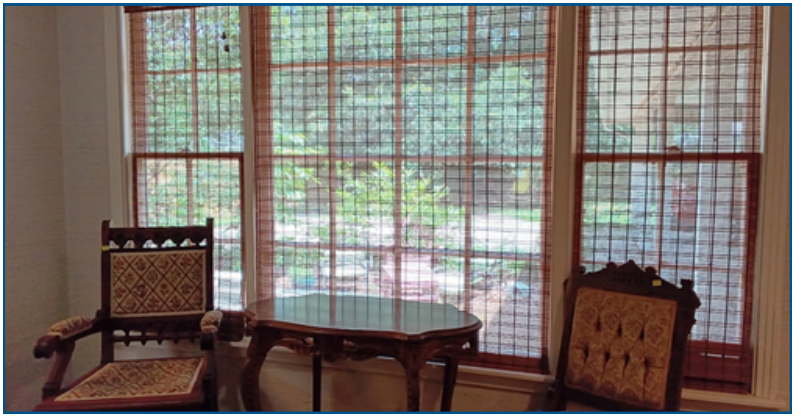
Cell: 601.715.3302

Emerson@TomSmithLand.com

**Tom
Smith
LAND AND
HOMES**

Expect More. Get More.

The Residence



**EMERSON
LOVELACE**
REALTOR®

Office: 662.441.2500

Cell: 601.715.3302

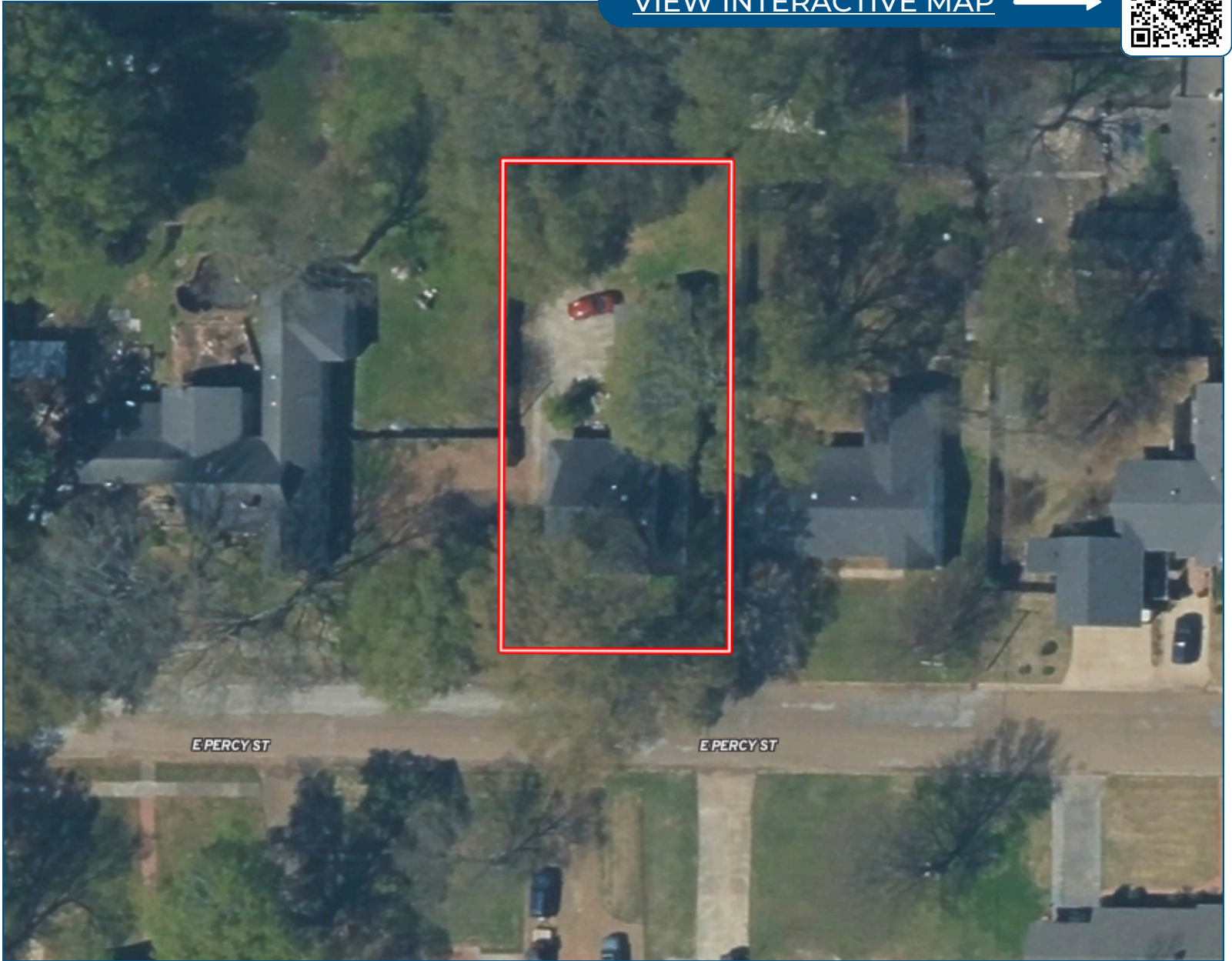
Emerson@TomSmithLand.com



Expect More. Get More.

Aerial Map

[VIEW INTERACTIVE MAP](#) →



**EMERSON
LOVELACE**
REALTOR®

Office: 662.441.2500

Cell: 601.715.3302

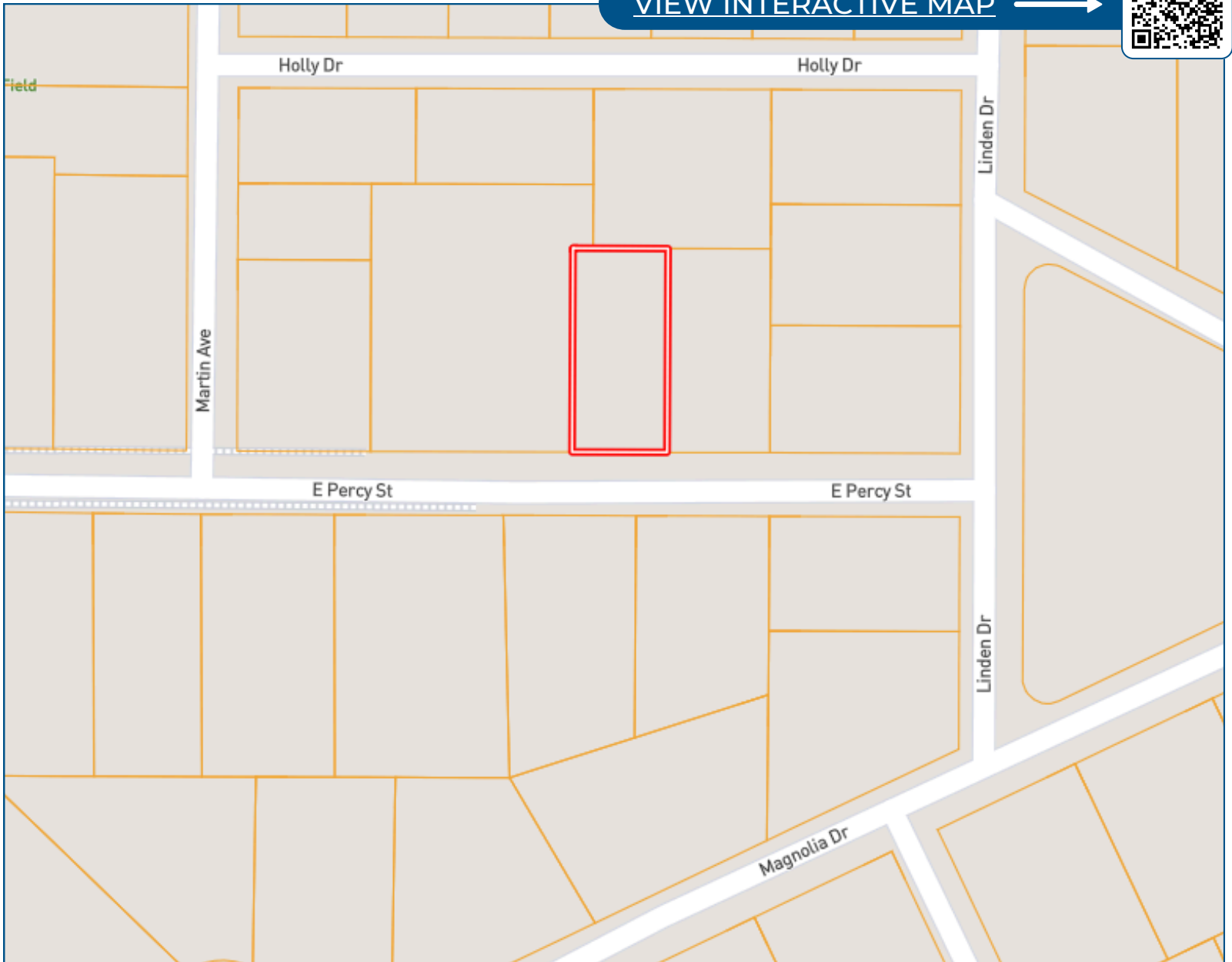
Emerson@TomSmithLand.com



Expect More. Get More.

Ownership Map

[VIEW INTERACTIVE MAP](#) →



**EMERSON
LOVELACE**
REALTOR®

Office: 662.441.2500
Cell: 601.715.3302

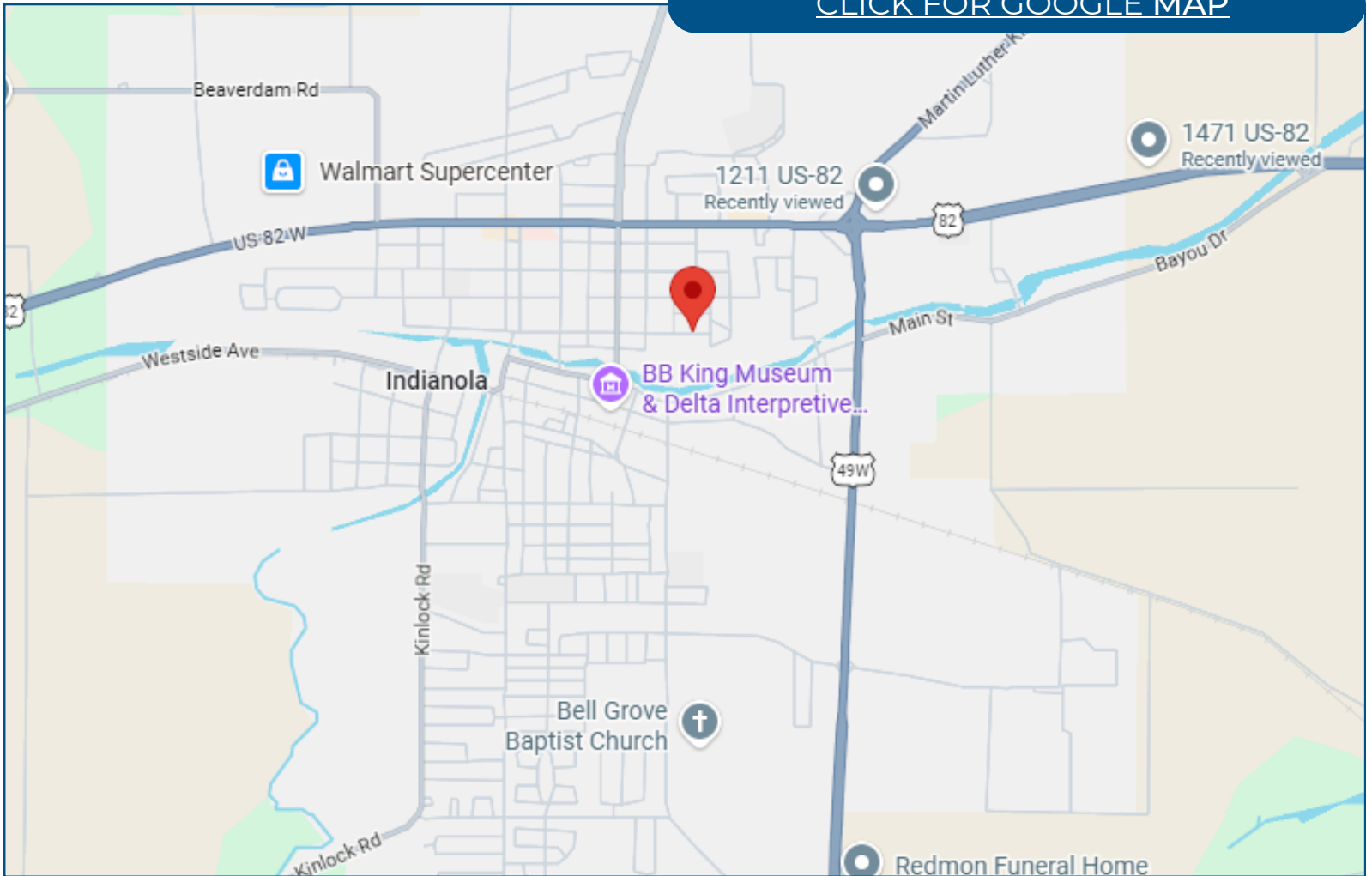
Emerson@TomSmithLand.com



Expect More. Get More.

Directional Map

[CLICK FOR GOOGLE MAP](#)



607 E. Percy Street Indianola, MS 38751

Directions from the intersection of Hwy 49 and Hwy 82 Indianola, MS: Travel East on Hwy 82 for approximately 0.8 miles. Turn left onto N sunflower Ave and in 0.3 miles tuyrn left ono E Percy St. In 0.2 miles the house will be on the left.

**EMERSON
LOVELACE**
REALTOR®

Office: 662.441.2500

Cell: 601.715.3302

Emerson@TomSmithLand.com



Expect More. Get More.

Listing Agent



EMERSON LOVELACE

Emerson is a fifth generation native of the Mississippi Delta dating back to the late 1800's. With strong family ties in the Indianola Commercial Real Estate Market, Emerson manages and consults both clients and prospective clients on real estate opportunities in and around Sunflower County, MS.

After graduating from the University of Mississippi with a Bachelor of Business Administration degree in 1998, Emerson spent a year enjoying the mountains of Aspen, Colorado which proved to be a much-needed prospective change for his future plans. His first job in real estate would be realized in Denver, Colorado as a real estate mortgage consultant, followed by six years managing a successful financial futures trading group at the Chicago Board of Trade.

Originally receiving his real estate license in 2006 selling homes along the beaches of Highway 30A in Florida, Emerson has since held real estate licenses in both Georgia and Mississippi as well. Shortly after moving back to the Mississippi Delta in 2013 to manage and sell his real estate investments, he decided his love of the area was just too strong to move away. As a consultant with his late father's firm Lovelace Real Estate Investments, Emerson built a successful real estate investment portfolio he proudly manages to this day.

Over the course of his professional career in real estate finance, sales, consulting and management, nothing is more important to Emerson than the fiduciary relationship with his clients. Attention to detail, hard work, dedication, and an open mind are of the utmost importance to him getting the job done right and maintaining long lasting relationships for the future.

OFFICE: 662.441.2500

CELL: 601.715.3302

Emerson@TomSmithLand.com

CALL EMERSON TODAY!



Expect More. Get More.