

HWY 30 W
SHIRO, TEXAS | 60 ± ACRES

Markham
Realty



Hwy 30 W



60 acres on Hwy 30 between Shiro and Roans Prairie in Grimes County. Mainly open pasture with a few scattered trees and a small pond. Electricity available at the road. Unrestricted with multiple homesite options. Located just 30 miles from College Station.



Markham Realty
Selling Quality Texas Properties Since 1970
contact@markhamrealty.com
936-295-5989 | markhamrealty.com



Scan here for additional information & photos.



Information furnished is from sources deemed reliable, but is not guaranteed by Markham Realty, Inc. The offerings are subject to change in price, errors, omissions, prior sales, or withdrawal without notice. Square footage, acreage size and lot dimensions are approximate. All persons and firms named in this brochure are licensed brokers or salespersons. Markham Realty, Inc. will co-broker with any licensed Broker if Broker and/or agent accompanies his or her prospective buyer from the first (1st) showing forward.

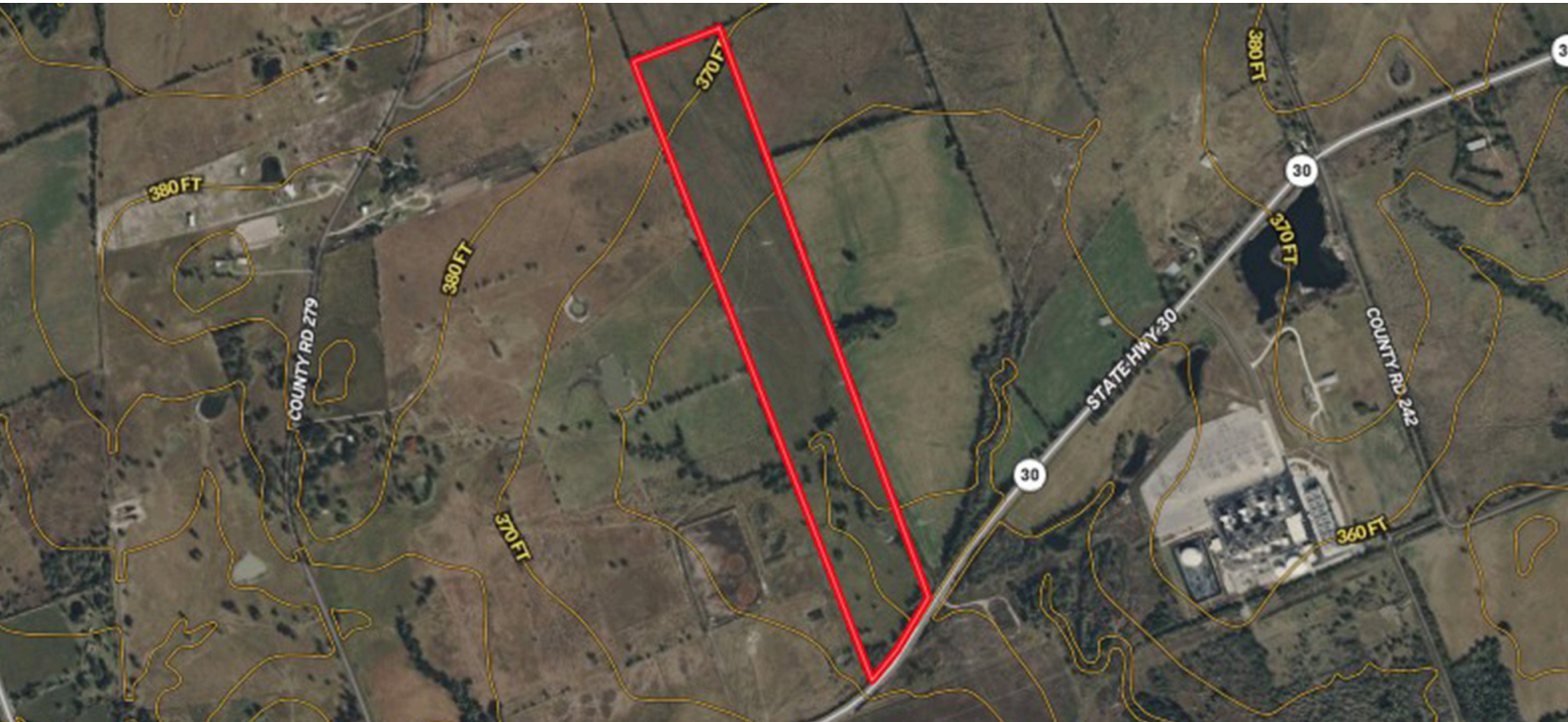
Hwy 30 W

SHIRO, TEXAS

Markham
Realty



Directions: Take Hwy 30 west to Shiro and the property is approximately 2.5 west of Shiro on the right side.



Markham
Realty

Markham Realty
Selling Quality Texas Properties Since 1970
contact@markhamrealty.com
936-295-5989 | markhamrealty.com



Scan here for additional information & photos.



Information furnished is from sources deemed reliable, but is not guaranteed by Markham Realty, Inc. The offerings are subject to change in price, errors, omissions, prior sales, or withdrawal without notice. Square footage, acreage size and lot dimensions are approximate. All persons and firms named in this brochure are licensed brokers or salespersons. Markham Realty, Inc. will co-broker with any licensed Broker if Broker and/or agent accompanies his or her prospective buyer from the first (1st) showing forward.