

# HUNTING & RECREATION

## Monroe County, MS

### 26.7± ACRES | \$77,500

Are you looking for a small hunting tract or just a place to get away? This 26.7± acres in Monroe County is what you have been looking for. It's located in Smithville, MS and is ready for its next owner. The property features one centralized food plot with a shooting house and is surrounded by five- to eight-year-old natural regeneration timber. There is a small ditch running through the property that has mature hardwoods surrounding it. If you're looking for a good hunting tract, give 26.7± Monroe a look.! Call Tom Wiseman for your private showing today!



**TOM  
WISEMAN**

ASSOCIATE BROKER

Office: 662.268.6333

Cell: 662.317.0467

[TWiseman@TomSmithLand.com](mailto:TWiseman@TomSmithLand.com)



Expect More. Get More.

**A Real Estate Expert You Can Trust**

[TomSmithLandandHomes.com](http://TomSmithLandandHomes.com)

Information is believed to be accurate but not guaranteed.







**A Real Estate Expert**  
*You Can Trust!*

**TOM WISEMAN**

ASSOCIATE BROKER

O: 662.268.6333 C: 662.317.0467

[TWiseman@TomSmithLand.com](mailto:TWiseman@TomSmithLand.com)

[TomSmithLandandHomes.com](http://TomSmithLandandHomes.com)



Expect More. Get More.

Information is believed to be accurate but not guaranteed.





# Aerial Map



**land id.** [Click Here for Interactive Map](#)

**A Real Estate Expert**  
*You Can Trust!*

**TOM WISEMAN**

ASSOCIATE BROKER

O: 662.268.6333 C: 662.317.0467

[TWiseman@TomSmithLand.com](mailto:TWiseman@TomSmithLand.com)

[TomSmithLandandHomes.com](http://TomSmithLandandHomes.com)

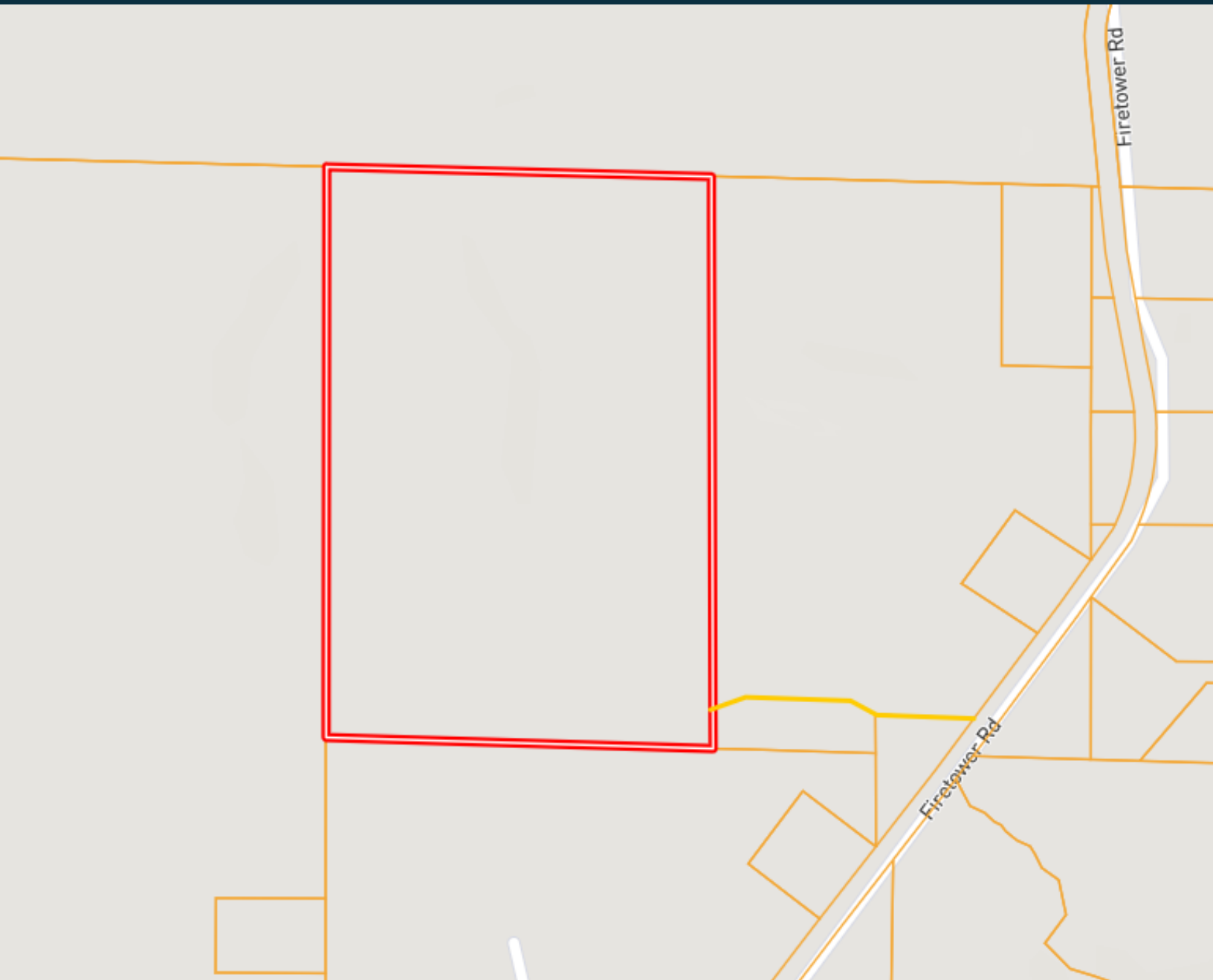


Expect More. Get More.

Information is believed to be accurate but not guaranteed.



# Ownership Map



**A Real Estate Expert**  
*You Can Trust!*

**TOM WISEMAN**

ASSOCIATE BROKER

O: 662.268.6333 C: 662.317.0467

[TWiseman@TomSmithLand.com](mailto:TWiseman@TomSmithLand.com)

[TomSmithLandandHomes.com](http://TomSmithLandandHomes.com)



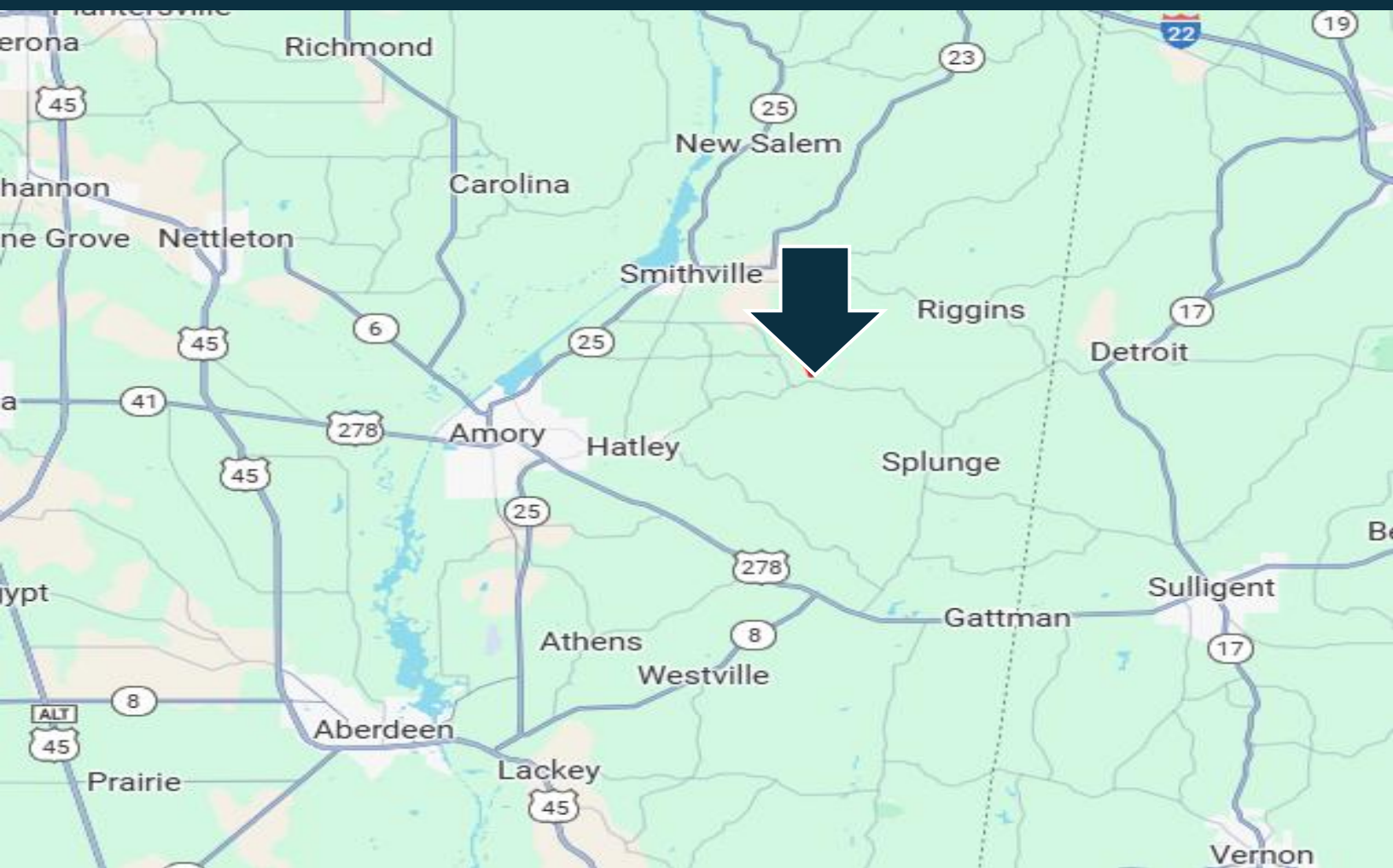
Expect More. Get More.

Information is believed to be accurate but not guaranteed.





# Directional Map



**Directions from Smithville, MS:** Take Smithville Road to Iron Bridge Road for .3 miles. Then take Wright Road to Parham Store Road for 2.3 miles. After that, continue on Parham Store Road heading towards Firetower Road for another 4.2 miles. Then turn left on Firetower Road and the property will be on your left. [Google Map Link](#)

**A Real Estate Expert**  
*You Can Trust!*

**TOM WISEMAN**

ASSOCIATE BROKER

O: 662.268.6333 C: 662.317.0467

TWiseman@TomSmithLand.com

TomSmithLandandHomes.com



Expect More. Get More.

