

# RESIDENTIAL | RECREATIONAL

## 18.77± Acres in Union County, MS



### \$99,500



Don't miss this 18.77± acre residential/recreational tract located on the east side of Hwy 9 in desirable Blue Springs, MS. The open residential site near the road contains approximately 1 acre with a sprinkler. There are two sheds for storage and a small pond for your enjoyment or animals. The 17.77± acres of recreational land feature mostly hardwood timber with some pine. The established food plot has a shooting house in place. Located in the A rated East Union School district, this would be a great site for your forever home. Don't wait—call Tom today!



**TOM**  
**WISEMAN**

ASSOCIATE BROKER

Office: 662.268.6333

Cell: 662.317.0467

[TWiseman@TomSmithLand.com](mailto:TWiseman@TomSmithLand.com)



Expect More. Get More.

### A Real Estate Expert You Can Trust

[TomSmithLandandHomes.com](http://TomSmithLandandHomes.com)

Information is believed to be accurate but not guaranteed.







## A Real Estate Expert *You Can Trust!*

**TOM WISEMAN**

ASSOCIATE BROKER

O: 662.268.6333 C: 662.317.0467

[TWiseman@TomSmithLand.com](mailto:TWiseman@TomSmithLand.com)

[TomSmithLandandHomes.com](http://TomSmithLandandHomes.com)



Expect More. Get More.



Information is believed to be accurate but not guaranteed.





## A Real Estate Expert *You Can Trust!*

**TOM WISEMAN**

ASSOCIATE BROKER

O: 662.268.6333 C: 662.317.0467

Twiseman@TomSmithLand.com

TomSmithLandandHomes.com



Expect More. Get More.



Information is believed to be accurate but not guaranteed.



# AERIAL MAP



[Click Here for the LandID Interactive Map Link](#)

**A Real Estate Expert**  
*You Can Trust!*

**TOM WISEMAN**

ASSOCIATE BROKER

O: 662.268.6333 C: 662.317.0467

Twiseman@TomSmithLand.com

TomSmithLandandHomes.com



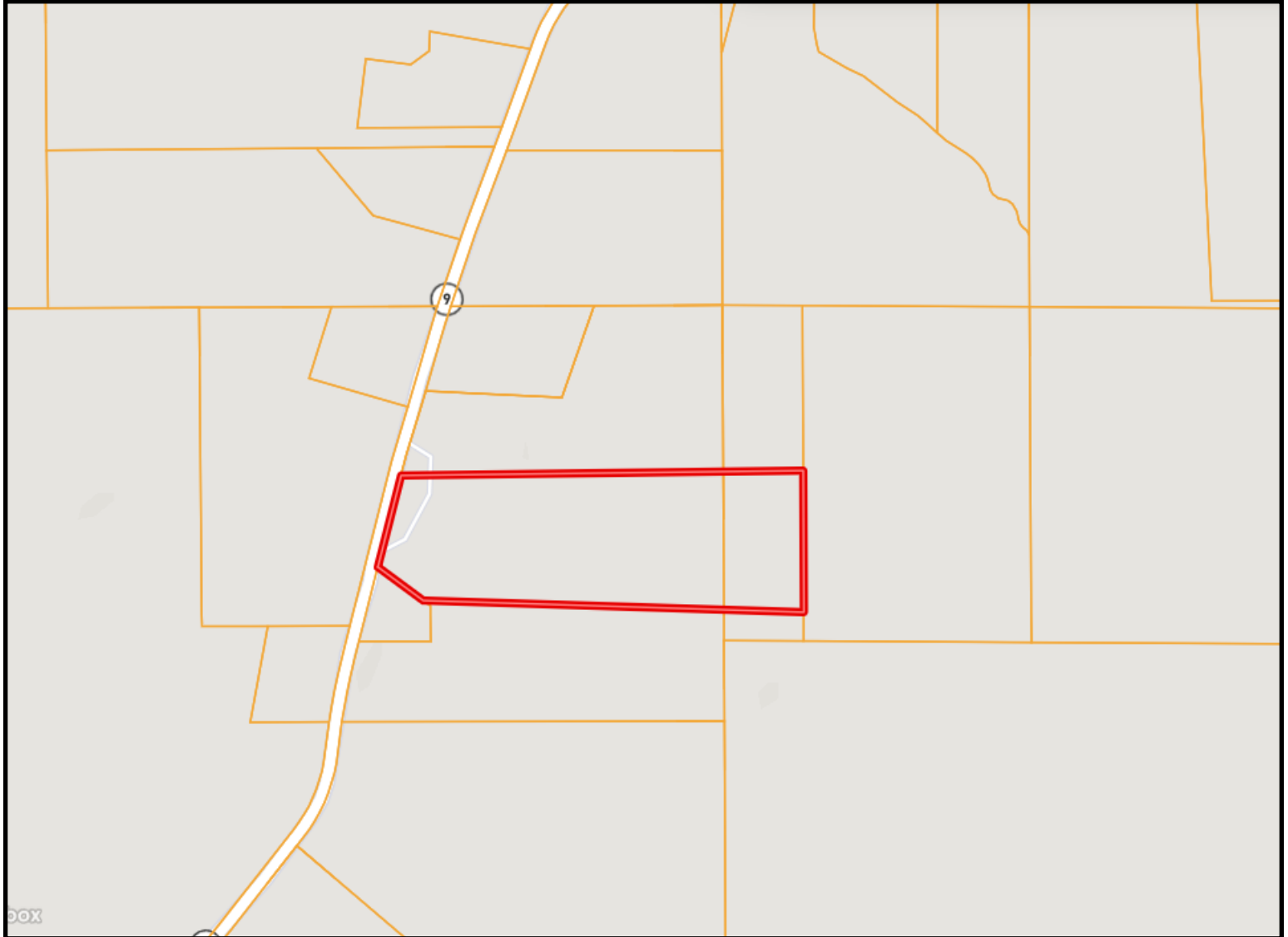
Expect More. Get More.



Information is believed to be accurate but not guaranteed.



# OWNERSHIP MAP



**A Real Estate Expert**  
*You Can Trust!*

**TOM WISEMAN**

ASSOCIATE BROKER

O: 662.268.6333 C: 662.317.0467

[TWiseman@TomSmithLand.com](mailto:TWiseman@TomSmithLand.com)

[TomSmithLandandHomes.com](http://TomSmithLandandHomes.com)



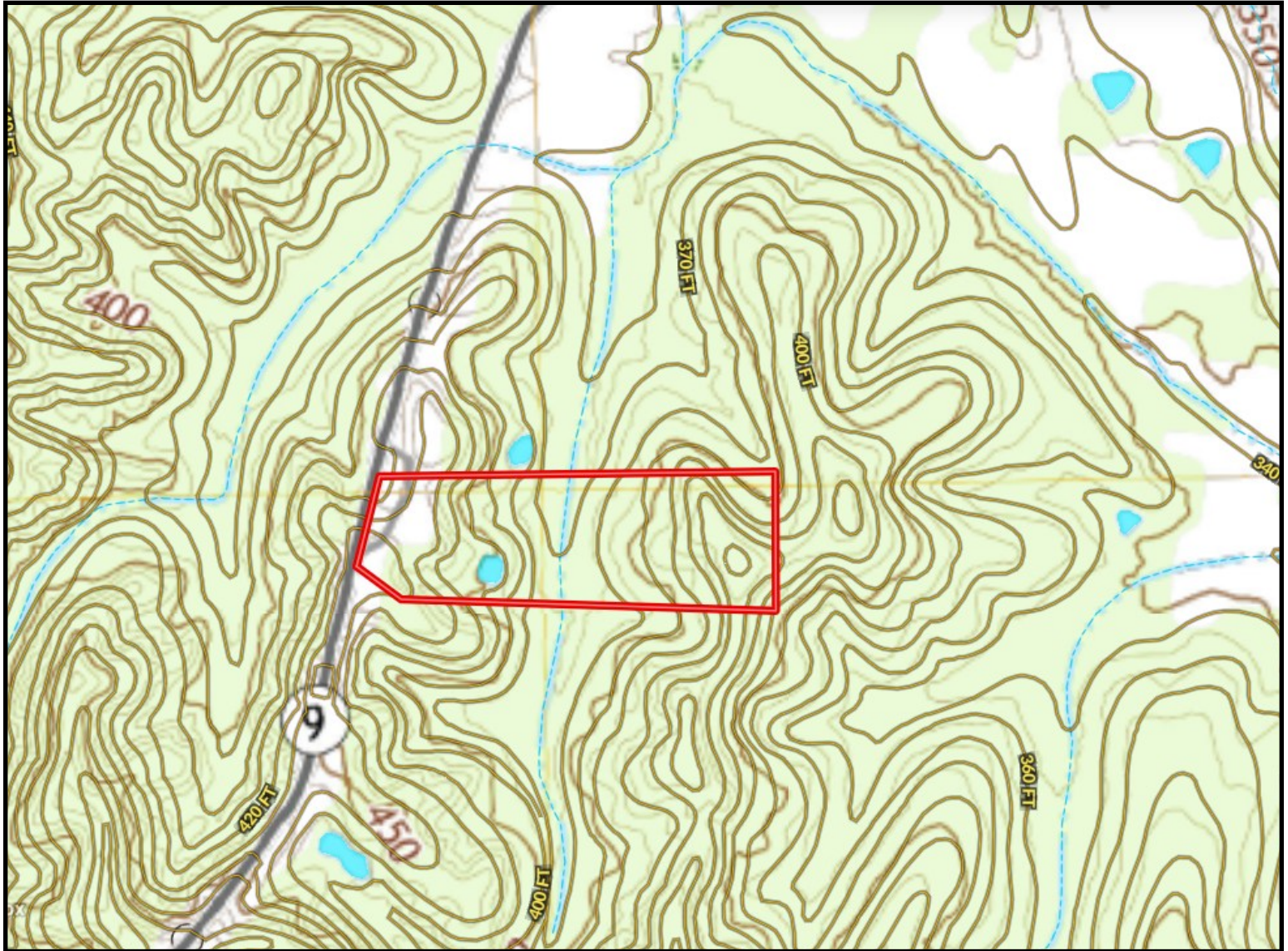
Expect More. Get More.

Information is believed to be accurate but not guaranteed.





# TOPO MAP



**A Real Estate Expert**  
*You Can Trust!*

**TOM WISEMAN**

ASSOCIATE BROKER

O: 662.268.6333 C: 662.317.0467

[TWiseman@TomSmithLand.com](mailto:TWiseman@TomSmithLand.com)

[TomSmithLandandHomes.com](http://TomSmithLandandHomes.com)

**Tom  
Smith  
LAND AND  
HOMES**

Expect More. Get More.

2011-2014  
NATIONAL  
BEST  
BROKERAGES

Information is believed to be accurate but not guaranteed.



# DIRECTIONAL MAP



From the Intersection of Main Street and Hwy 9 in Blue Springs, MS:  
Take Hwy 9 North 1.20 miles to property on the right.



**TOM  
WISEMAN**

ASSOCIATE BROKER

Office: 662.268.6333

Cell: 662.317.0467

[TWiseman@TomSmithLand.com](mailto:TWiseman@TomSmithLand.com)



Expect More. Get More.

**A Real Estate Expert You Can Trust**

[TomSmithLandandHomes.com](http://TomSmithLandandHomes.com)

Information is believed to be accurate but not guaranteed.

