

49± Acres Commercial Property

Off of HWY 25

Louisville, Mississippi



\$600,000



Expect More. Get More.

**JOHNNY
LUKE**
REALTOR®

Office: 662.268.6333
Cell: 662.803.2622

JohnnyLuke@TomSmithLand.com

**A Real Estate Expert
You Can Trust!**



TomSmithLandandHomes.com

Office: 601.898.2772

Property Information

Location:

- South West Louisville, MS
- Approximately 3 miles from Downtown Louisville, MS
- Approximately 34 miles from Starkville, MS
- Approximately 26 miles from Philadelphia, MS
- Approximately 84 miles from Flowood, MS

Coordinates:

- 33.10065, -89.0864

Property Use:

- Commercial
- Industrial

Property Highlights

- 49± Acres
- \$12,244.89/Acre
- 24.5± Acres of Vacant Commercial
- Approximately 3,050 Ft of Hwy 25 Frontage

**JOHNNY
LUKE**
REALTOR®

Office: 662.268.6333
Cell: 662.803.2622

JohnnyLuke@TomSmithLand.com



Expect More. Get More.

The Property

49± Acres

Positioned in Southwest Louisville, Mississippi, this 49± acre property offers exceptional potential for commercial or industrial development. Conveniently located just 3 miles from downtown Louisville, approximately 34 miles from Starkville, and 84 miles from Flowood, the property combines accessibility, visibility, and convenience in a highly desirable location.

The tract includes approximately 49± acres of vacant commercial land and features an impressive 3,050± feet of frontage along Highway 25, providing outstanding exposure in a high-traffic area. Its strategic location and extensive highway frontage make it well-suited for a variety of commercial, industrial, or investment opportunities.



**JOHNNY
LUKE**
REALTOR®

Office: 662.268.6333
Cell: 662.803.2622

JohnnyLuke@TomSmithLand.com



Expect More. Get More.

The Property



**JOHNNY
LUKE**
REALTOR®

Office: 662.268.6333
Cell: 662.803.2622

JohnnyLuke@TomSmithLand.com



Expect More. Get More.

The Property



**JOHNNY
LUKE**
REALTOR®

Office: 662.268.6333
Cell: 662.803.2622

JohnnyLuke@TomSmithLand.com



Expect More. Get More.

Aerial Map



[VIEW INTERACTIVE MAP](#)



**JOHNNY
LUKE**
REALTOR®

Office: 662.268.6333
Cell: 662.803.2622

JohnnyLuke@TomSmithLand.com



Expect More. Get More.

Ownership Map



[VIEW INTERACTIVE MAP](#)



**JOHNNY
LUKE**
REALTOR®

Office: 662.268.6333
Cell: 662.803.2622

JohnnyLuke@TomSmithLand.com

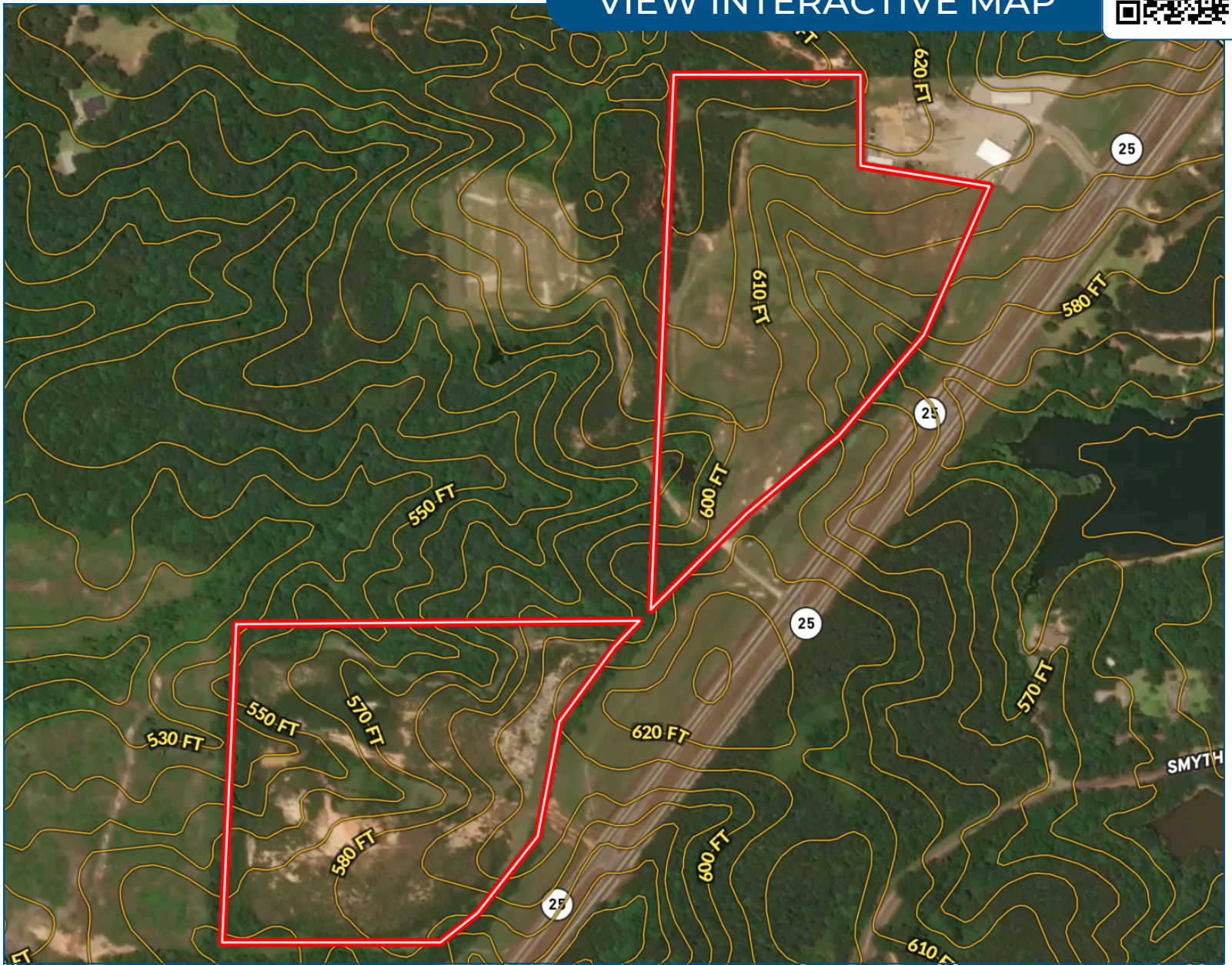


Expect More. Get More.

Topo Map



[VIEW INTERACTIVE MAP](#)



**JOHNNY
LUKE**
REALTOR®

Office: 662.268.6333
Cell: 662.803.2622

JohnnyLuke@TomSmithLand.com

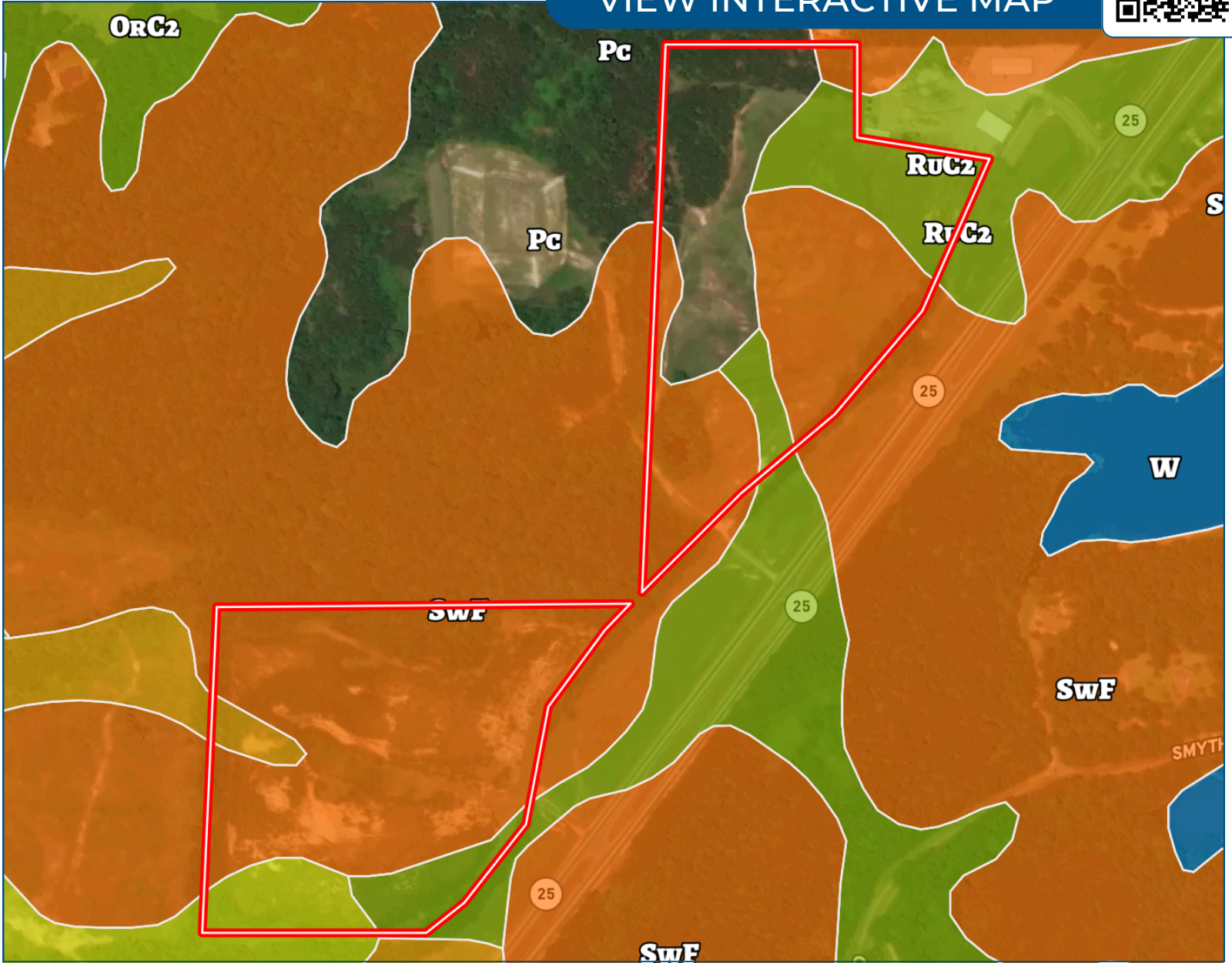


Expect More. Get More.

Soil Map



[VIEW INTERACTIVE MAP](#)



**JOHNNY
LUKE**
REALTOR®

Office: 662.268.6333
Cell: 662.803.2622

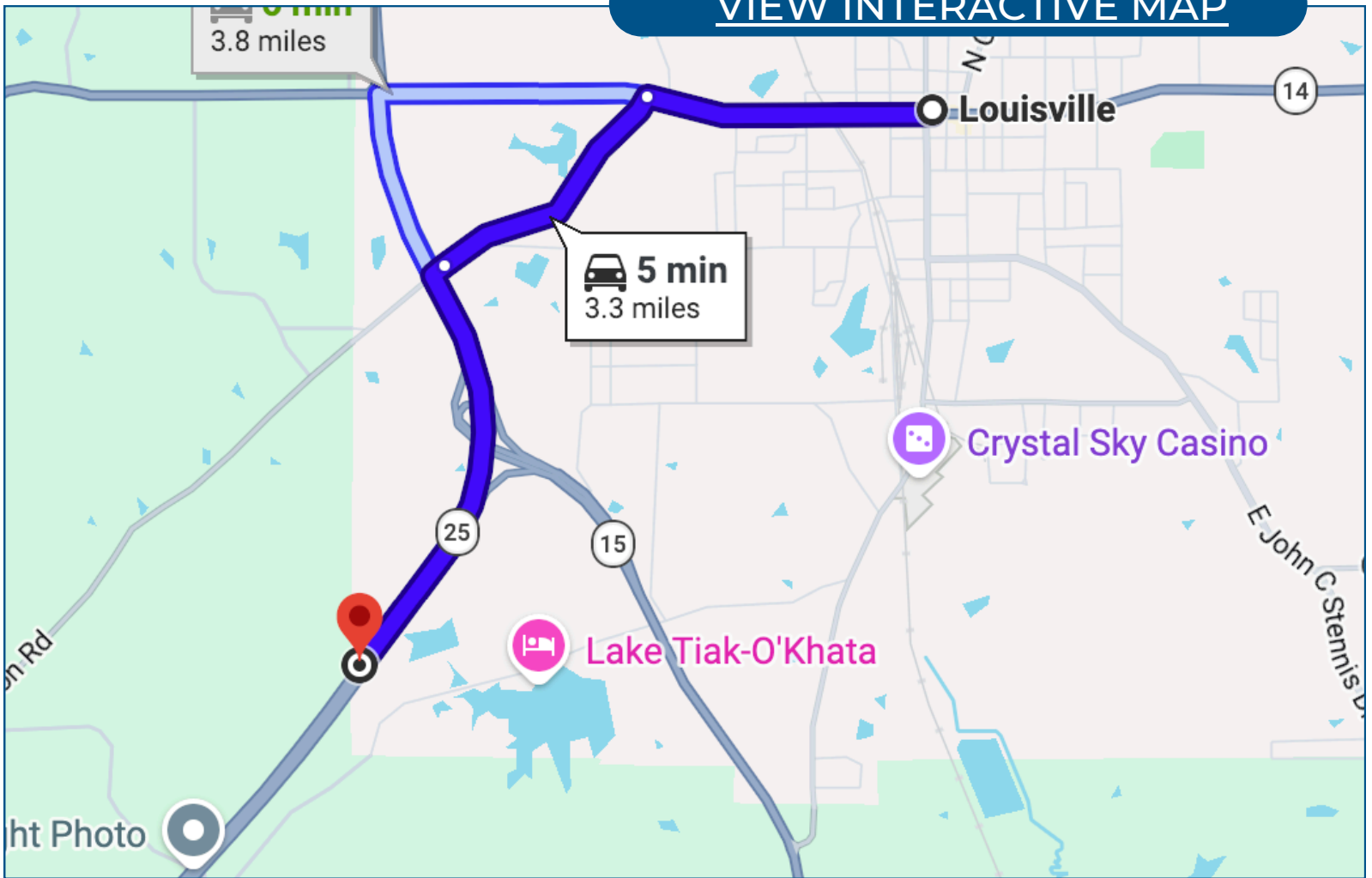
JohnnyLuke@TomSmithLand.com



Expect More. Get More.

Directional Map

[VIEW INTERACTIVE MAP](#)



Directions from Downtown Louisville, MS:

Head toward N Church Ave for approximately 0.9 miles. Turn left onto Old Robinson Road and continue for 0.9 miles. Turn left onto MS-15 S/MS-25 S and continue to follow MS-25 S. The property will be located on the right.

**JOHNNY
LUKE**
REALTOR®

Office: 662.268.6333
Cell: 662.803.2622

JohnnyLuke@TomSmithLand.com



Expect More. Get More.

Listing Agent



Johnny Luke

Realtor®

Johnny Luke is a lifelong resident of Winston County, where he developed a deep love for the outdoors and a strong connection to the land and community. He has over 25 years of experience working with the public, earning the trust and respect of his clients through dependable service and genuine care.

He attended East Central Community College and Mississippi State University. Johnny has always had a passion for helping people. Whether you're selling property, searching for a recreational getaway, or looking for your forever home, he's here to help with your needs every step of the way.

Johnny brings dedication, local knowledge, and a friendly, down-to-earth approach to every detail. He's ready to help you find the perfect place to call home.

OFFICE: 662.228.6333

CELL: 601.803.2622

JohnnyLuke@TomSmithLand.com

CALL ME TODAY!

