

# PASTURE, HARDWOODS & PRIME HOMESITE

61 ± Acres in Marion County, MS



**\$286,700**

This 61±-acre tract on Columbia Purvis Road offers an ideal blend of open pasture and wooded habitat—perfect for a private estate, small farm, or multi-home development. With approximately 25± acres of pasture ready for livestock, hay production, or immediate construction, the remaining acreage transitions into mixed pine and hardwoods that provide natural privacy, wildlife cover, and strong deer and turkey hunting opportunities. Paved road frontage and available utilities make building or development seamless, making this property an excellent opportunity for families, investors, or developers in a highly desirable area.



**DALE WILDS**  
REALTOR®

O: 601.898.2772 | C: 662.715.7109  
Dale@TomSmithLand.com



**DAVID BELDEN**  
ALC®, REALTOR®

O: 601.898.2772 | C: 601.415.3884  
DBelden@TomSmithLand.com

**TomSmithLandandHomes.com**

Information is believed to be accurate but not guaranteed.





**DALE WILDS**  
REALTOR®

O: 601.898.2772 | C: 662.715.7109  
Dale@TomSmithLand.com



**DAVID BELDEN**  
ALC®, REALTOR®

O: 601.898.2772 | C: 601.415.3884  
DBelden@TomSmithLand.com

**TomSmithLandandHomes.com**


Information is believed to be accurate but not guaranteed.

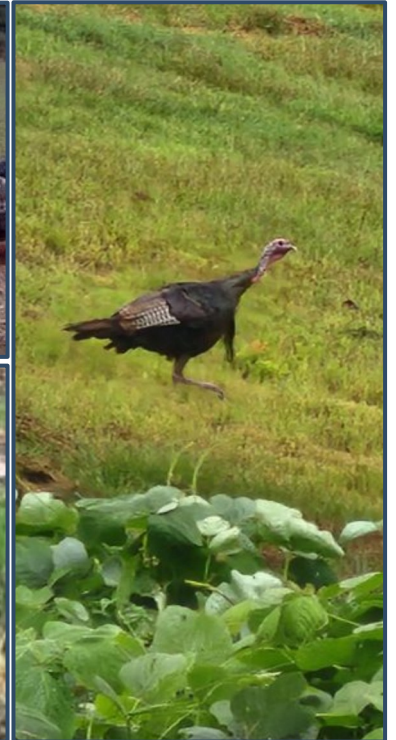




**MOULTRIE**

North Key Lock On B

10/25/25 11:35 PM  68 °F



**DALE WILDS**  
REALTOR®

O: 601.898.2772 | C: 662.715.7109  
Dale@TomSmithLand.com

**DAVID BELDEN**  
ALC®, REALTOR®

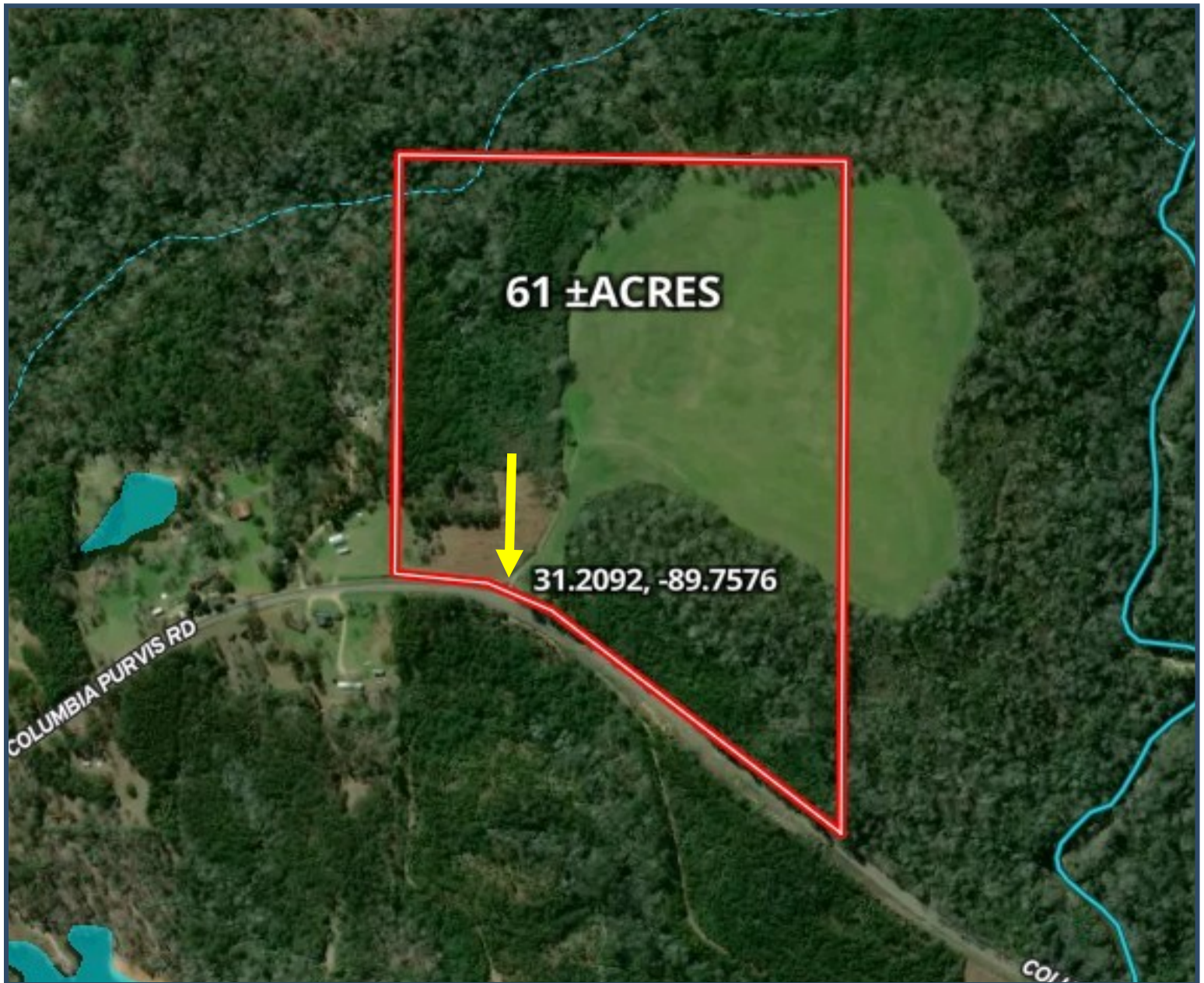
O: 601.898.2772 | C: 601.415.3884  
DBelden@TomSmithLand.com

**TomSmithLandandHomes.com**

Information is believed to be accurate but not guaranteed.



# AERIAL MAP



[CLICK HERE FOR THE LANDID INTERACTIVE MAP](#)

**DALE WILDS**  
REALTOR®

O: 601.898.2772 | C: 662.715.7109  
Dale@TomSmithLand.com



**DAVID BELDEN**  
ALC®, REALTOR®

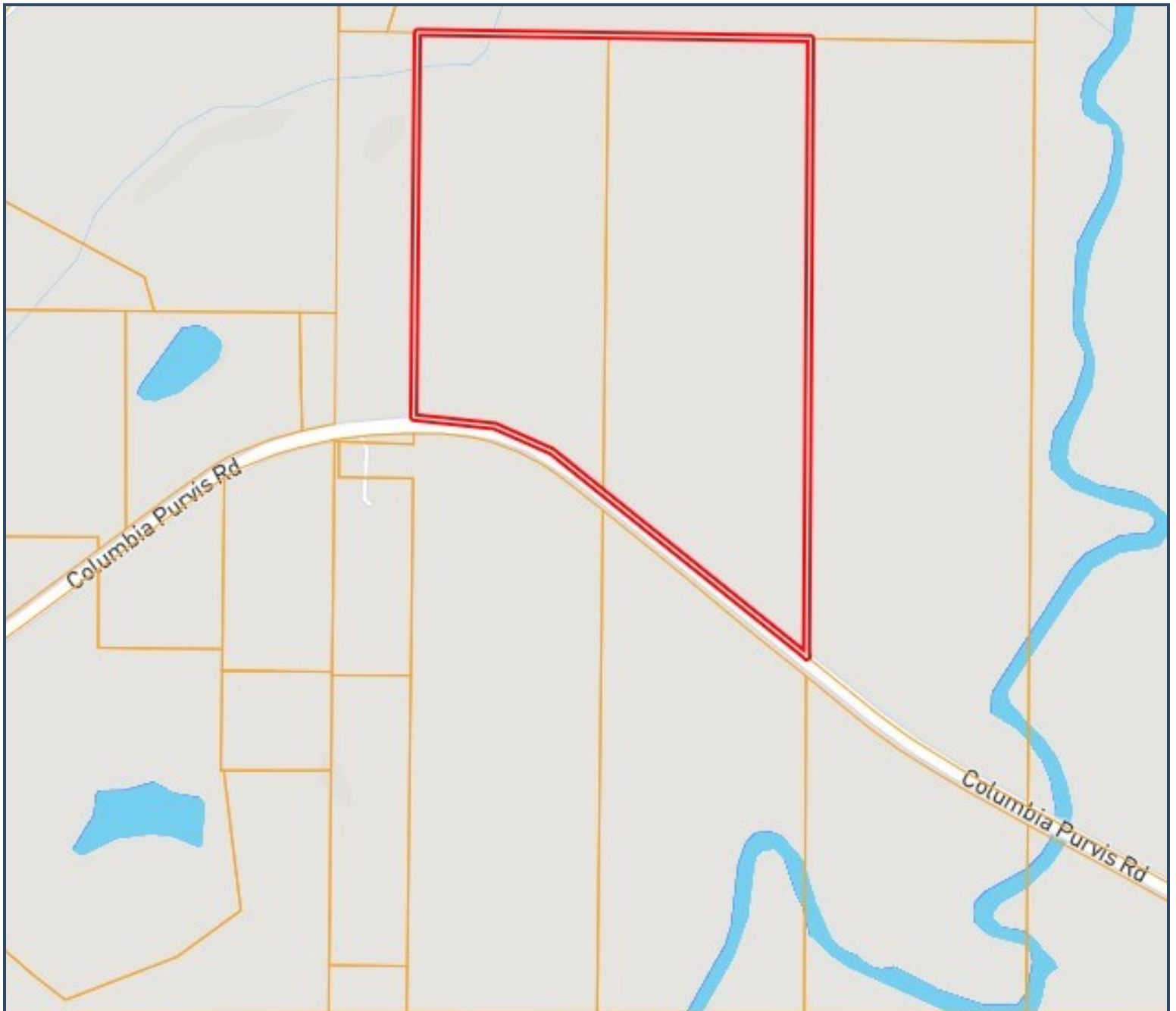
O: 601.898.2772 | C: 601.415.3884  
DBelden@TomSmithLand.com

**TomSmithLandandHomes.com**

Information is believed to be accurate but not guaranteed.



# OWNERSHIP MAP



**DALE WILDS**  
REALTOR®

O: 601.898.2772 | C: 662.715.7109  
Dale@TomSmithLand.com



**DAVID BELDEN**  
ALC®, REALTOR®

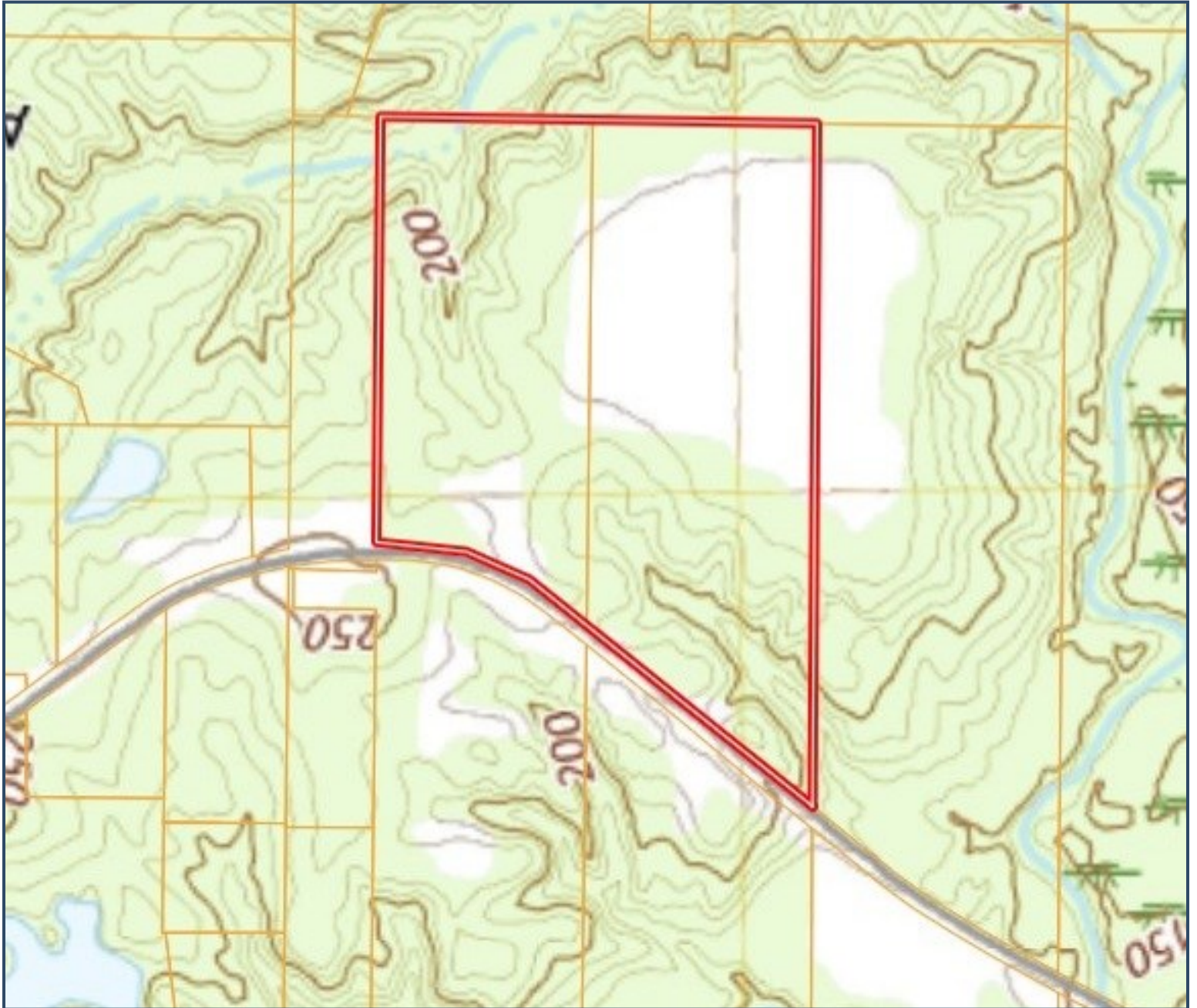
O: 601.898.2772 | C: 601.415.3884  
DBelden@TomSmithLand.com

**TomSmithLandandHomes.com**

Information is believed to be accurate but not guaranteed.



# TOPO MAP



**DALE WILDS**  
REALTOR®

O: 601.898.2772 | C: 662.715.7109  
Dale@TomSmithLand.com



**DAVID BELDEN**  
ALC®, REALTOR®

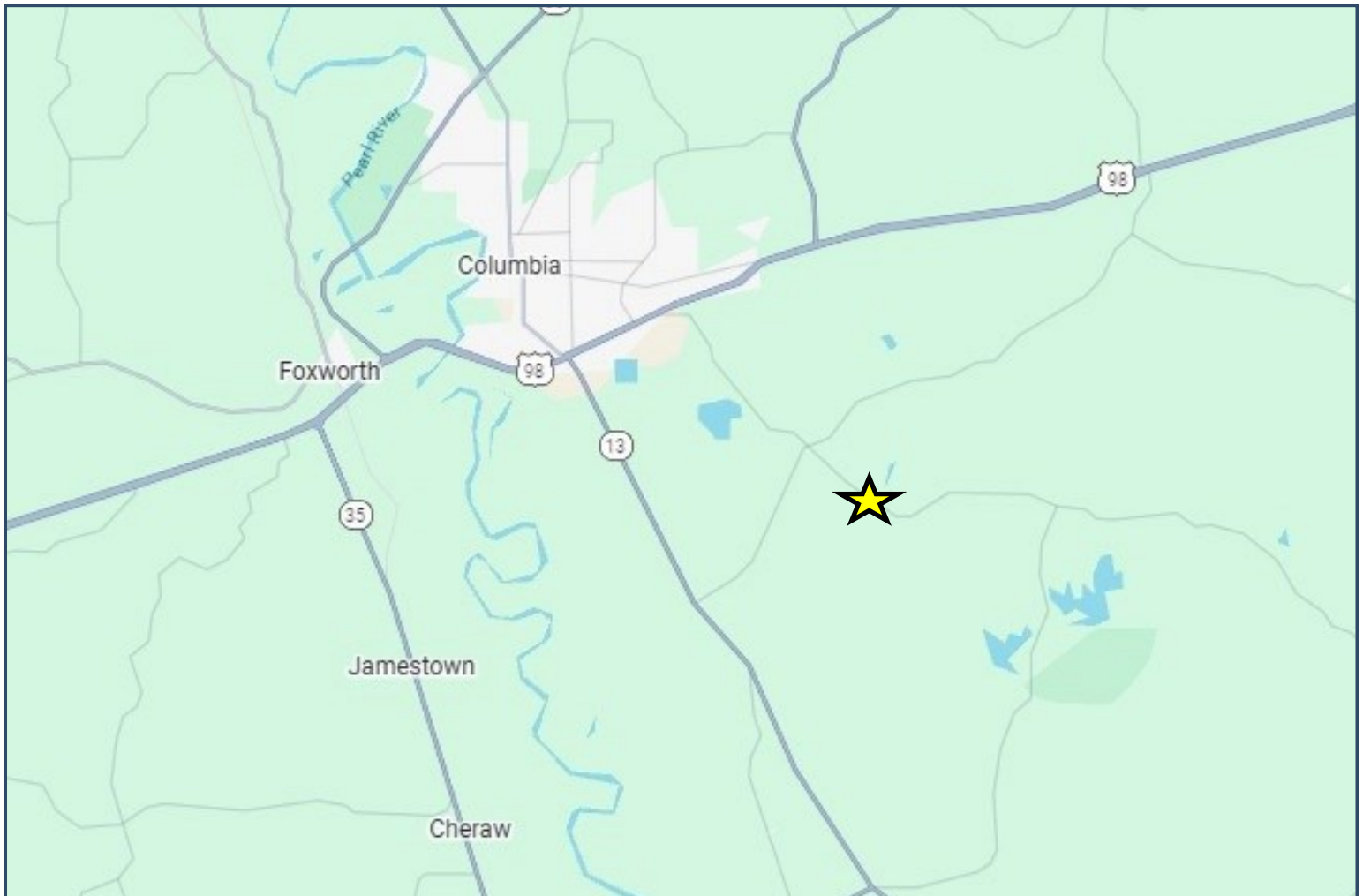
O: 601.898.2772 | C: 601.415.3884  
DBelden@TomSmithLand.com

**TomSmithLandandHomes.com**

Information is believed to be accurate but not guaranteed.



# DIRECTIONAL MAP



Directions from Hwy 98/Columbia Purvis Rd intersection: Turn Right onto Columbia Purvis Rd and the destination will be on your left after 3.9 miles.

[GOOGLE MAP LINK](#)

**DALE WILDS**  
REALTOR®

O: 601.898.2772 | C: 662.715.7109  
Dale@TomSmithLand.com



**DAVID BELDEN**  
ALC®, REALTOR®

O: 601.898.2772 | C: 601.415.3884  
DBelden@TomSmithLand.com

**TomSmithLandandHomes.com**

Information is believed to be accurate but not guaranteed.

