



**Slade Priest**  
 sladepriest1@gmail.com  
 Office: (601) 250-0017  
 Cell: (601) 888-0094  
 SouthernStatesRealty.com



**Southern  
States Realty**



MLS United LLC

Tucked away in a truly special setting, this exceptional 30± acre property at 7035 Robertson Road offers the perfect blend of comfort, privacy, and outdoor recreation in the heart of Amite/Franklin County. Situated along the scenic Homochitto River and bordering the Homochitto National Forest, this property provides unmatched access to nature, hunting, and year-round enjoyment. The land itself is diverse and beautiful, featuring open pasture, two established food plots, stunning hardwood timber, and a gorgeous cypress bottom that creates a classic South Mississippi river-bottom atmosphere. Wildlife is abundant, making this an ideal property for hunters, nature lovers, or anyone seeking a peaceful escape surrounded by thousands of acres of protected forestland. Despite its seclusion, the property enjoys convenient blacktop road frontage, offering easy access without sacrificing privacy. At the center of the property sits a well-appointed 2,700 square foot farmhouse-style home with 3 bedrooms and 3 bathrooms. The home has been tastefully updated and modernized while still maintaining its warm, inviting character. Spacious living areas, comfortable bedrooms, and thoughtful updates make this home equally suited for full-time living or as a weekend camp and getaway. There is also a standby backup generator to keep you comfortable during any outages. Whether you're hosting family, entertaining friends, or simply enjoying quiet evenings, the home offers both functionality and charm. This property checks every box: river frontage, national forest boundary, beautiful timber, open pasture, established food plots, and a move-in-ready home. It would make an outstanding hunting camp, a relaxing recreational retreat, or a secluded full-time residence where you can enjoy peace, privacy, and natural beauty every day. Opportunities like this along the Homochitto River are rare—don't miss your chance to own a truly unique piece of Mississippi land.

**7035 Robertson Road, Meadville, MS**

**31.3513, -90.9631 GPS**



MLS United LLC



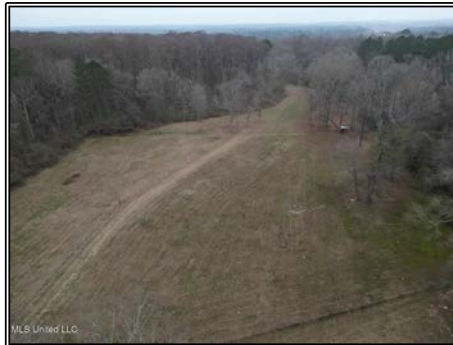
MLS United LLC



MLS United LLC



MLS United LLC



MLS United LLC



MLS United LLC

**\$450,000**

**30± Acres  
3 Bed/3 Bath  
MLS #4135858**



**#HUNTINGLANDMAN**