

Spacious Home

200 Flemming Lane

Indianola, Sunflower County, MS



\$199,500



Expect More. Get More.

Property Information

Location:

- Located in Grove Park Neighborhood

Property Use:

- Residential

Coordinates:

- 33.4315, -90.6452

Property Highlights

- 0.74 Acre Lot
- Large Corner Lot (134.8x240)
- +/- 2,000 sq/ft (Adjusted) +/- 1,800 sq/ft (Base)
- Three Bedroom, Two Bathrooms
- Brick Exterior (Georgia Pink)
- Metal Roof
- Central HVAC
- Two Car Carport
- Private Fenced Backyard



Expect More. Get More.

**EMERSON
LOVELACE**
REALTOR®

Office: 662.441.2500
Cell: 601.715.3302

Emerson@TomSmithLand.com

**A Real Estate Expert
You Can Trust!**



The Residence

+/- 2,100 SQ/FT

Spacious three-bedroom, two-bathroom home situated on a large 0.75-acre corner lot in desirable Grove Park. Features include Georgia Pink brick exterior, metal roof, central HVAC, and approx. 2,100 sq. ft. adjusted (1,800 sq. ft. base). Interior offers updated kitchen and bathrooms, cherry hardwood and ceramic flooring, stainless steel appliances, and Squire wood-burning fireplace. Exterior highlights include private fenced backyard and two-car garage. Well-maintained home with excellent space, comfort, and curb appeal.



**EMERSON
LOVELACE**
REALTOR®

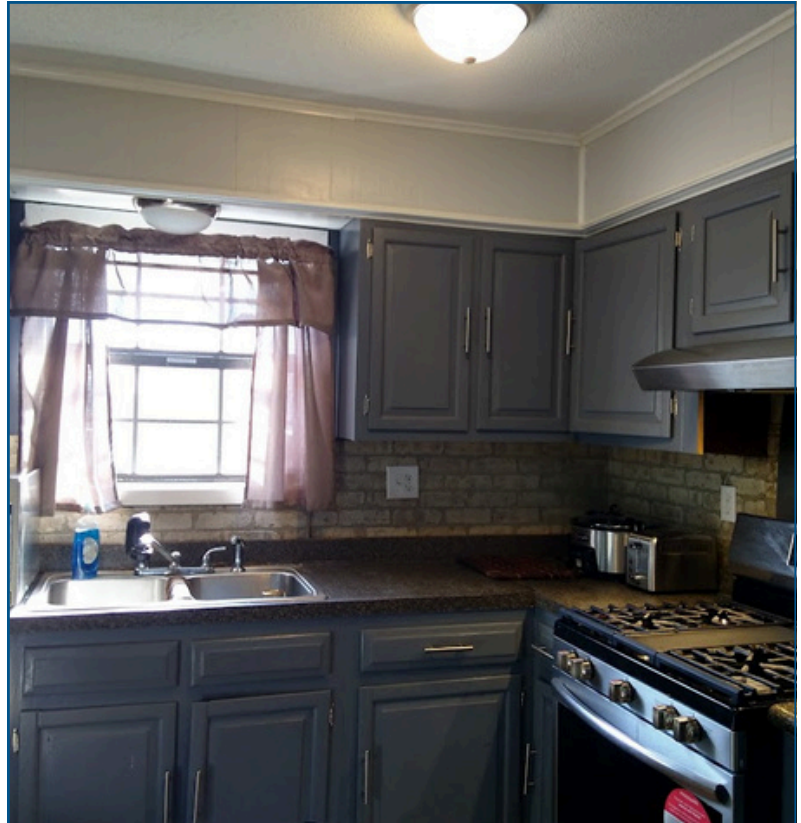
Office: 662.441.2500

Cell: 601.715.3302

Emerson@TomSmithLand.com


**Tom
Smith
LAND AND
HOMES**
Expect More. Get More.

The Residence



**EMERSON
LOVELACE**
REALTOR®

Office: 662.441.2500

Cell: 601.715.3302

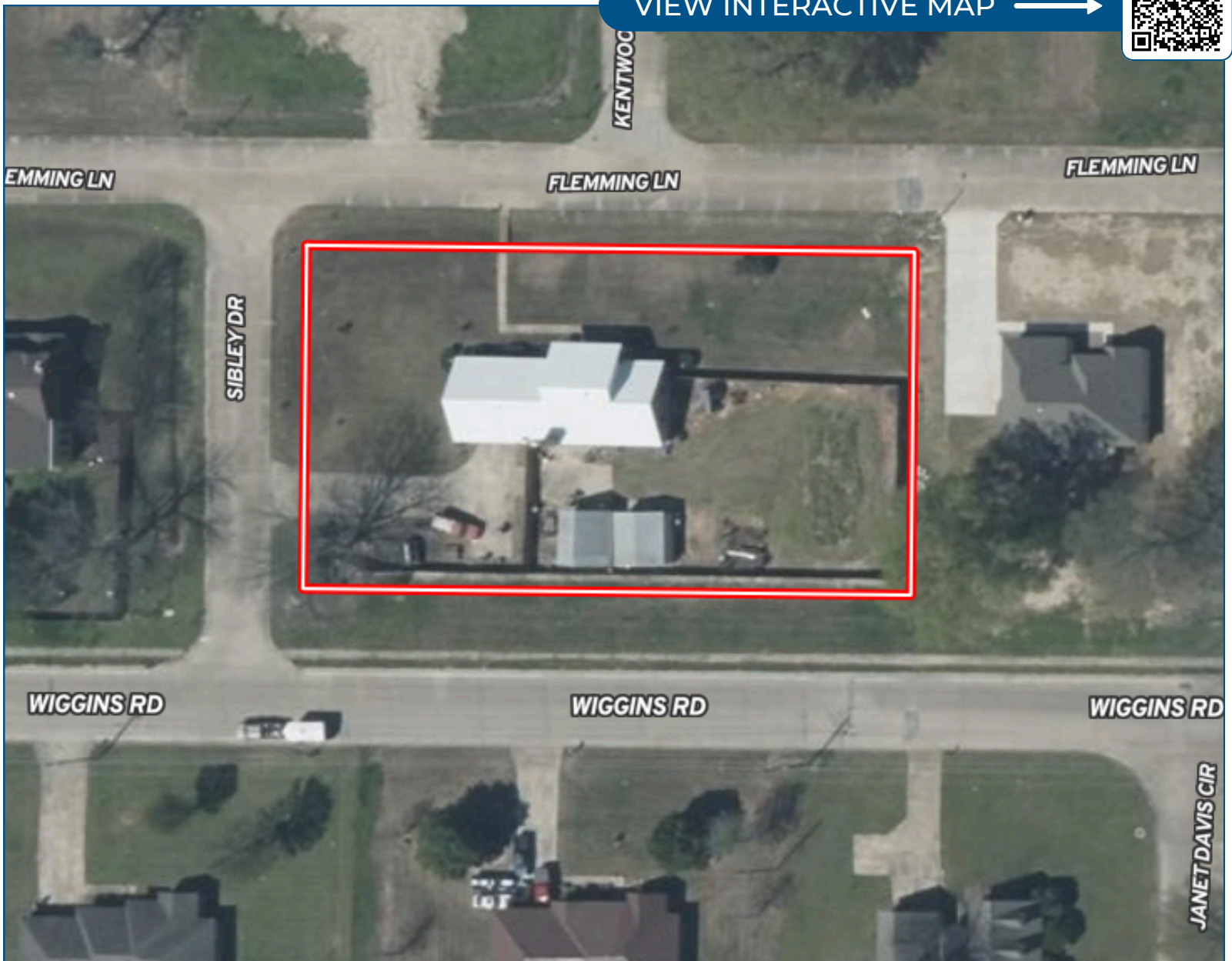
Emerson@TomSmithLand.com

**Tom
Smith
LAND AND
HOMES**

Expect More. Get More.

Aerial Map

VIEW INTERACTIVE MAP →



**EMERSON
LOVELACE**
REALTOR®

Office: 662.441.2500

Cell: 601.715.3302

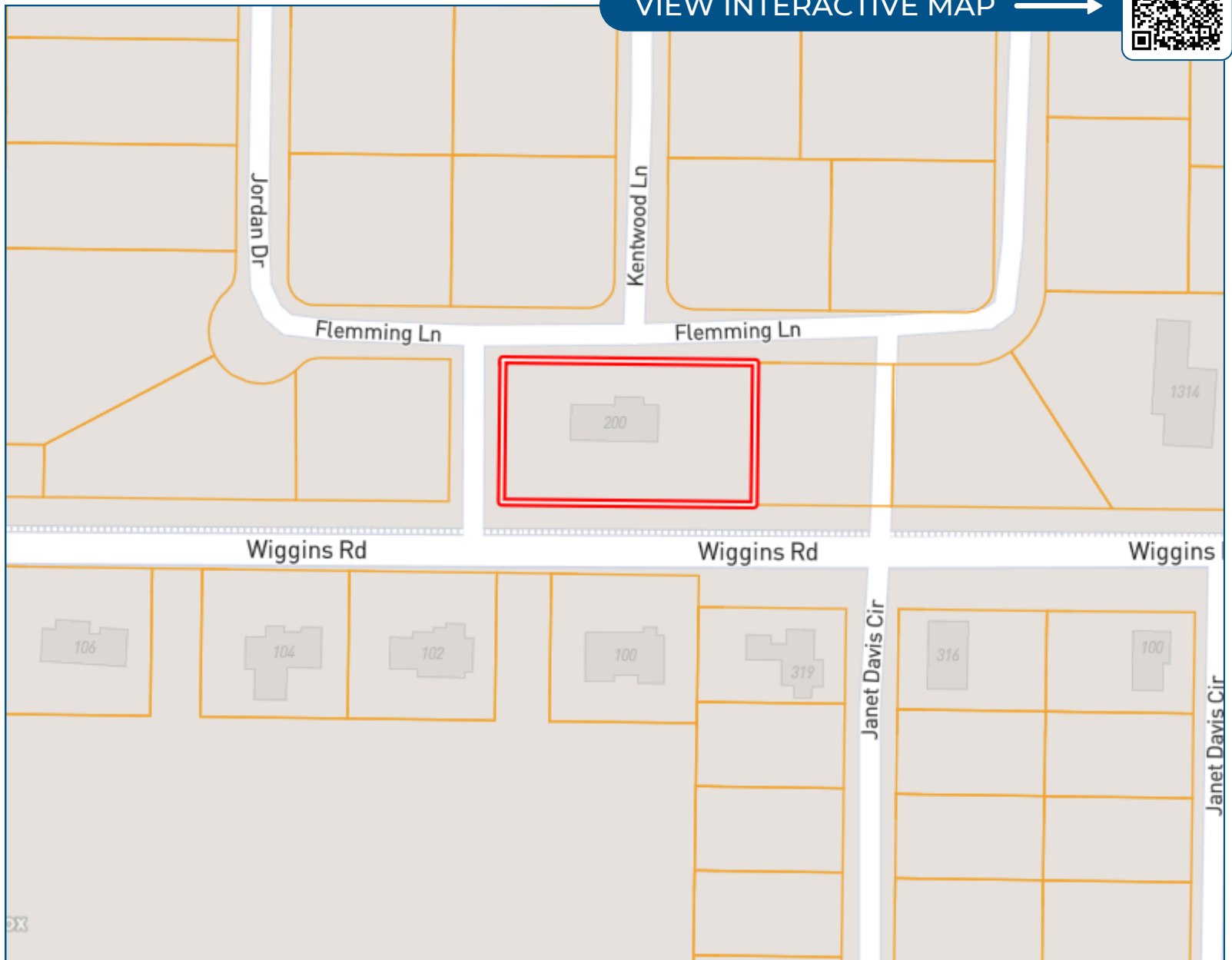
Emerson@TomSmithLand.com



Expect More. Get More.

Ownership Map

VIEW INTERACTIVE MAP →



**EMERSON
LOVELACE**
REALTOR®

Office: 662.441.2500

Cell: 601.715.3302

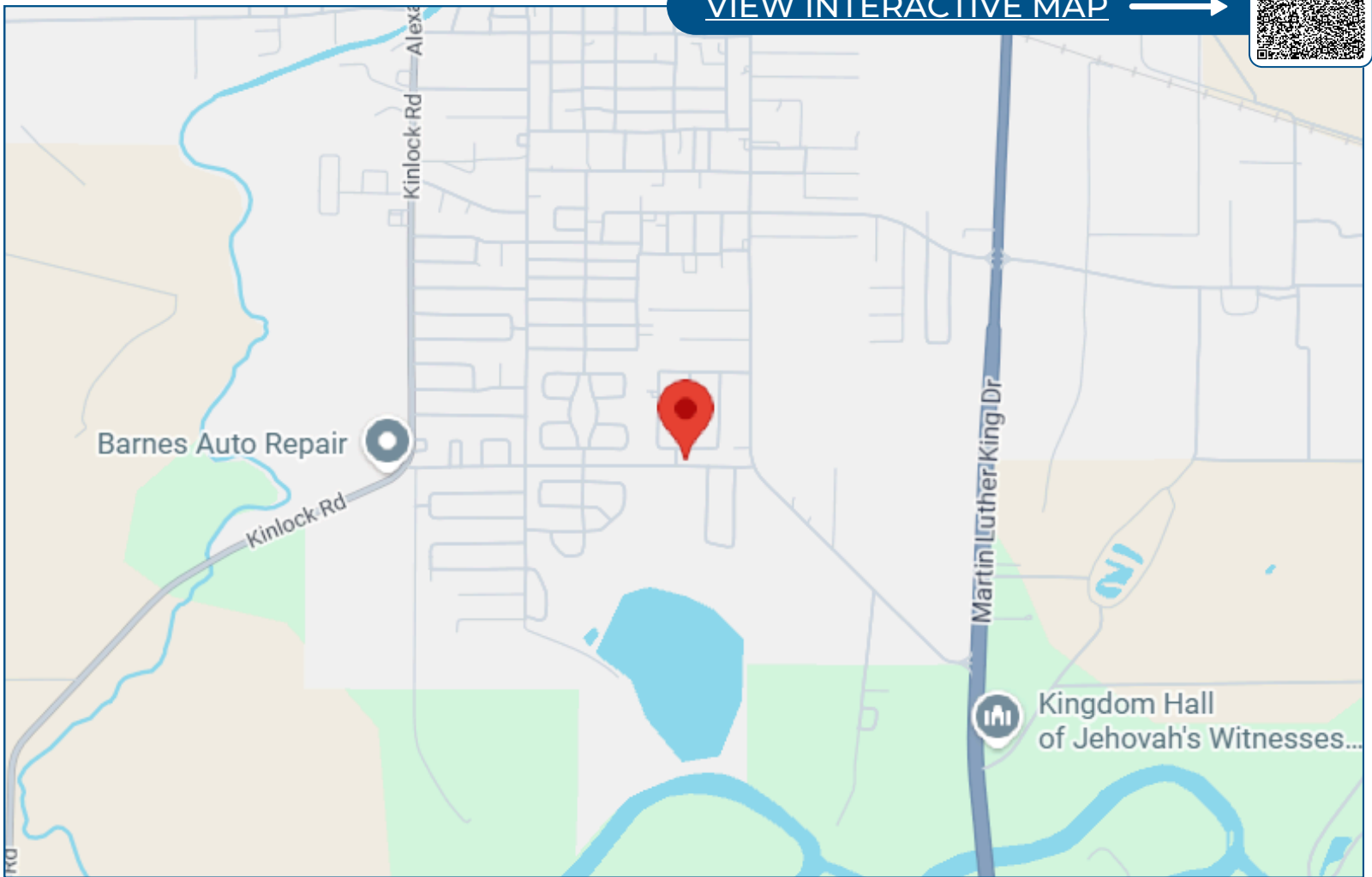
Emerson@TomSmithLand.com



Expect More. Get More.

Directional Map

[VIEW INTERACTIVE MAP](#) →



200 Flemming Lane Indianola, MS 38751

Travel West on Hwy 82 for approximately 0.1 miles. Turn left onto Martin Luther King Dr. and in 2.3 miles turn right onto B. B. King Rd. In 0.7 miles turn left onto Wiggins Rd. and in 0.2 miles turn right onto Sibley Dr. In 207 feet turn right onto Flemming Lane and the house will be on the right.

**EMERSON
LOVELACE**
REALTOR®

Office: 662.441.2500
Cell: 601.715.3302

Emerson@TomSmithLand.com



Listing Agent



EMERSON LOVELACE

Emerson is a fifth generation native of the Mississippi Delta dating back to the late 1800's. With strong family ties in the Indianola Commercial Real Estate Market, Emerson manages and consults both clients and prospective clients on real estate opportunities in and around Sunflower County, MS.

After graduating from the University of Mississippi with a Bachelor of Business Administration degree in 1998, Emerson spent a year enjoying the mountains of Aspen, Colorado which proved to be a much-needed prospective change for his future plans. His first job in real estate would be realized in Denver, Colorado as a real estate mortgage consultant, followed by six years managing a successful financial futures trading group at the Chicago Board of Trade.

Originally receiving his real estate license in 2006 selling homes along the beaches of Highway 30A in Florida, Emerson has since held real estate licenses in both Georgia and Mississippi as well. Shortly after moving back to the Mississippi Delta in 2013 to manage and sell his real estate investments, he decided his love of the area was just too strong to move away. As a consultant with his late father's firm Lovelace Real Estate Investments, Emerson built a successful real estate investment portfolio he proudly manages to this day.

Over the course of his professional career in real estate finance, sales, consulting and management, nothing is more important to Emerson than the fiduciary relationship with his clients. Attention to detail, hard work, dedication, and an open mind are of the utmost importance to him getting the job done right and maintaining long lasting relationships for the future.

OFFICE: 662.441.2500

CELL: 601.715.3302

Emerson@TomSmithLand.com

CALL EMERSON TODAY!



Expect More. Get More.