

LARRY E. LANGSTON & ASSOCIATES

CONSULTING ENGINEERING AND LAND SURVEYING

P. O. BOX 754
GATESVILLE, TEXAS 76528
Field Notes

48999

For: Etta Sanders

Dated: April 4, 1984

All that certain land situated in Coryell County, Texas and being a part of the Allen Caruthers Survey and the S.P.R.R.Co. Survey (patented to C.W.Blair). Being a part of the same land described as 203 acres in a conveyance from the Matthews Royalty Co. to J.B. Sanders and wife. Said instrument being of record in Vol. 104, Pg. 111 of the Coryell County Deed Records.

The land described herein is more particularly in two tracts as follows:

TRACT NO. 1 (Being a part of the Allen Caruthers Survey and the S.P.R.R.Co. Survey)
Beginning at a steel pin at a corner post in the east line of said Caruthers Survey for the northeast corner this and the northeast corner of the above described 203 acre tract.

Thence with the lines of said 203 acre tract, as fenced, as follows: N85°36'52"W, 1802.42 ft. to a steel pin at a corner post; S17°01'44"W, 1310.29 ft. to a steel pin at a corner post; S08°56'08"E, 464.42 ft. to a steel pin at a corner post; S27°06'40"E, 784.48 ft. to a steel pin at a corner post; S53°17'49"W, 673.81 ft. to a steel pin at a corner post; S74°14'24"W, 375.60 ft. to a steel pin at a corner post; N71°21'37"W, 271.74 ft. to a steel pin at a corner post; and S22°16'33"W, 190.94 ft. to a steel pin at a corner post in the north right of way line of F.M.Hwy. 1241. Said corner being a point on a curve whose radius is 1477.69 ft.

Thence with said right of way line, along a curve to the right, S39°52'30"E, 15.70 ft. to the end of said curve.

Thence S39°33'00"E, 363.63 ft. to the beginning of another curve whose radius is 1387.69 ft.

Thence with said curve to the left on a baseline chord of S55°52'30"E, 780.12 ft. to the end of said curve.

Thence continuing with said right of way line S72°12'00"E, 847.69 ft. to a steel pin at a corner post for the southeast corner this, a point in the east line of the S.P.R.R.Co. Survey.

Thence leaving said right of way line and following a fenceline and the east lines of said S.P.R.R.Co. Survey and said Caruthers Survey, N18°28'30"E, 4065.40 ft. to the place of beginning and containing 136.00 acres of land.

Of the above described 136.00 acres, 119.06 acres lay in said Caruthers Survey and 16.94 acres lay in said S.P.R.R.Co. Survey.

TRACT NO. 2 (Being a part of the S.P.R.R.Co. Survey)
Beginning at a steel pin at a corner post for the southeast corner this and the southeast corner of the above described 203 acre tract.

Thence with a fenceline N70°04'02"W, at 2518.31 ft. pass a steel pin at a corner post in the east line of a lane, in all a distance of 2534.31 ft. to the center of said lane.

Thence with the center of said lane N18°55'28"E, 899.62 ft. to corner in the south right of way line of F.M.Hwy. 1241, from which a steel pin lays S66°04'32"E, 16.02 ft. Said corner being a point in a curve whose radius is 1477.69 ft.

LARRY E. LANGSTON & ASSOCIATES

CONSULTING ENGINEERING AND LAND SURVEYING

P. O. BOX 754
GATESVILLE, TEXAS 76528

Field Notes for Etta Sanders
(Contd.)

Thence with said curve to the left on a baseline chord of $S68^{\circ}58'53''E$, 166.00 ft. to the end of said curve.

Thence continuing along said right of way line $S72^{\circ}12'00''E$, 2143.94 ft. to the beginning of another curve whose radius is 5684.65 ft.

Thence with said curve to the right on a baseline chord of $S71^{\circ}09'30''E$, 206.69 ft. to the end of said curve.

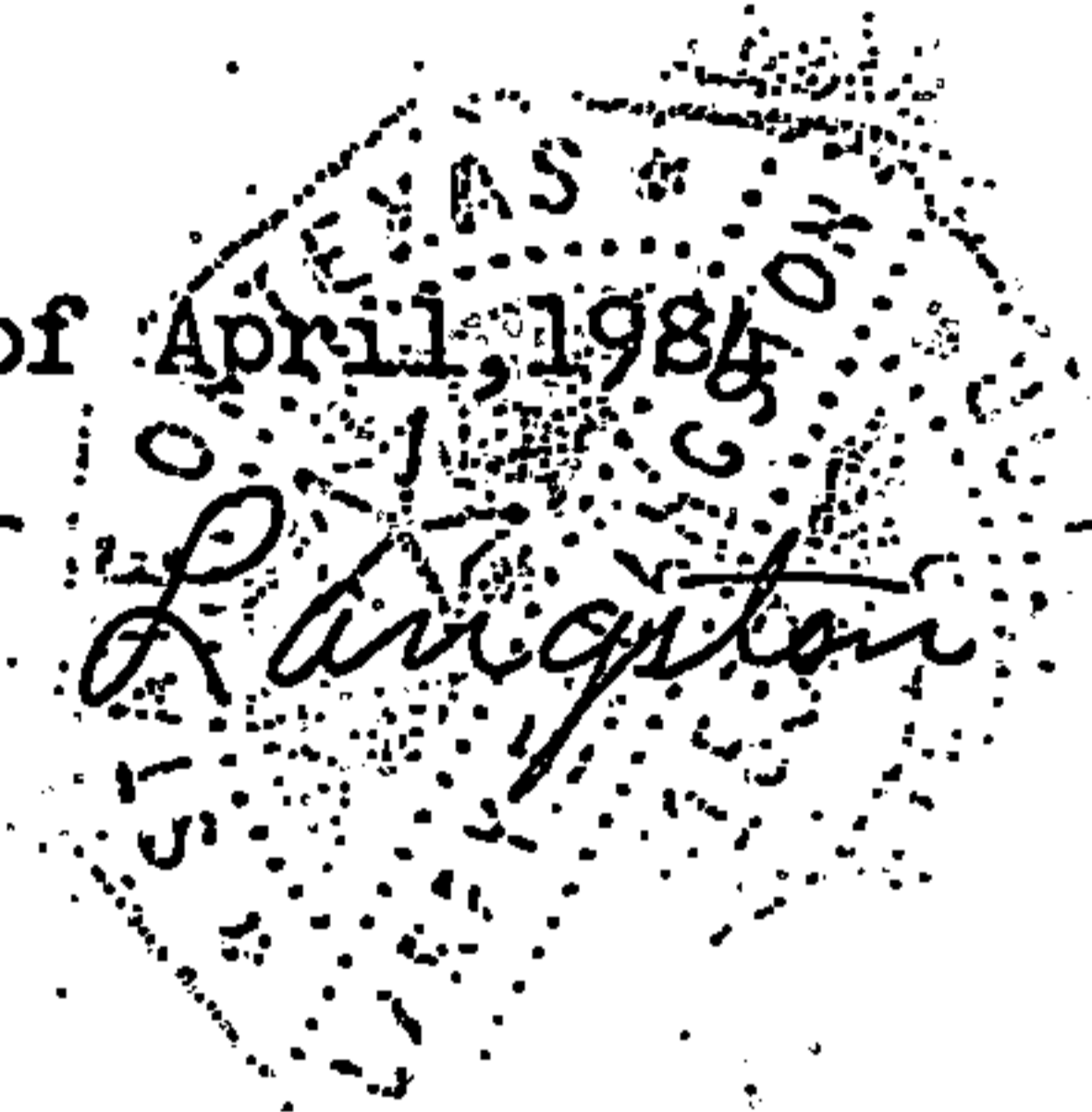
Thence continuing along said right of way line $S70^{\circ}07'00''E$, 27.41 ft. to a steel pin found at a corner post for the northeast corner this.

Thence leaving said right of way line and following a fenceline $S19^{\circ}29'07''W$, 980.11 ft. to the place of beginning and containing 54.64 acres of land (includes 0.33 acre in said lane).

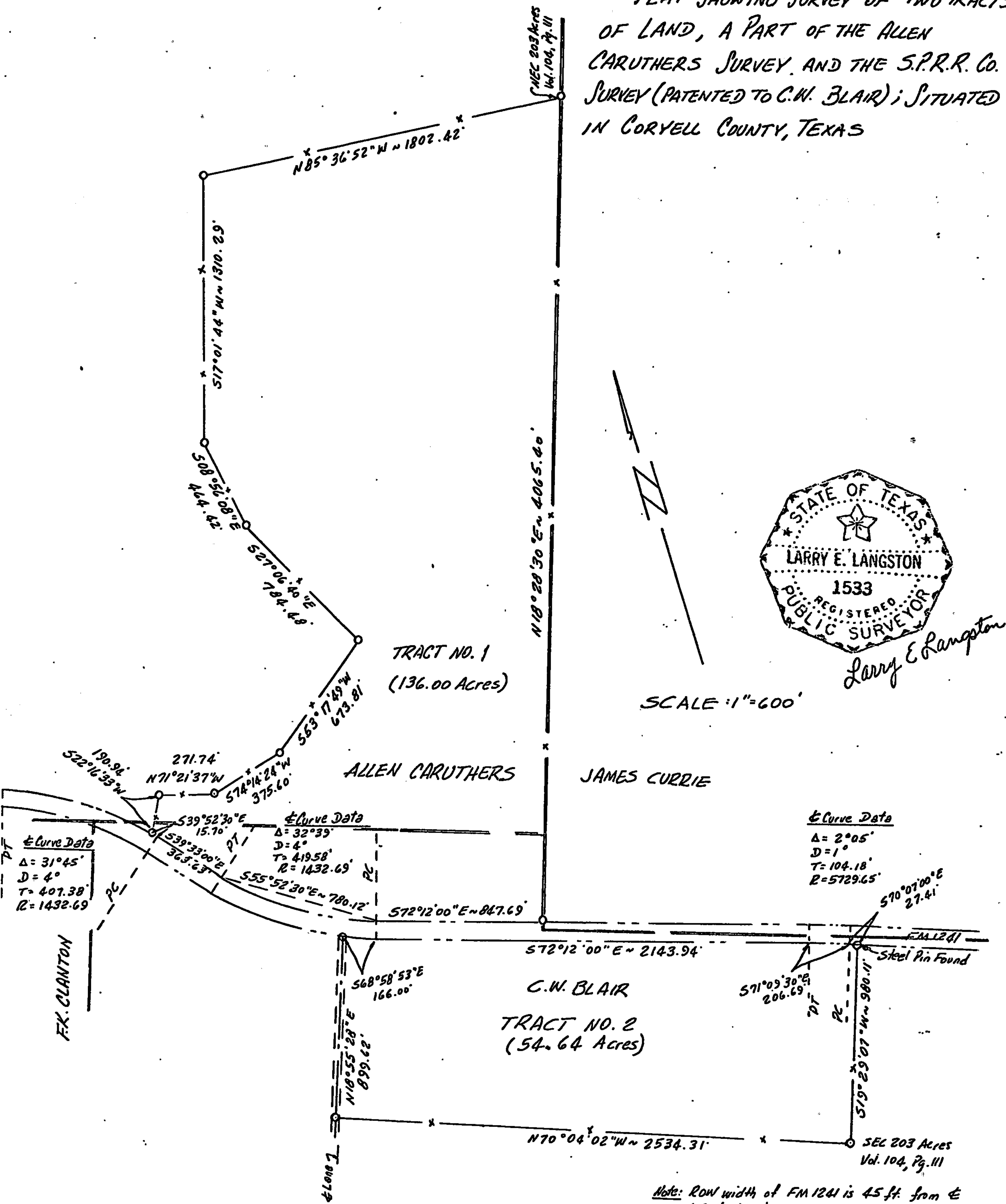
I, Larry E. Langston, Registered Public Surveyor of Coryell County, Texas do hereby certify that the foregoing survey was done by me on the ground and that it is true and correct to the best of my knowledge and belief.

This 4th Day of April, 1984

Larry E. Langston



PLAT SHOWING SURVEY OF TWO TRACTS OF LAND, A PART OF THE ALLEN CARUTHERS SURVEY AND THE S.P.R.R. CO. SURVEY (PATENTED TO C.W. BLAIR); SITUATED IN CORYELL COUNTY, TEXAS



FILED FOR RECORD April 26, 1984 at 12:10 0'Clock P M.
 RECORDED April 30, 1984 at 10:32 0'Clock A M.
 TRIBBLE SHEPHERD
 COUNTY CLERK, CORYELL COUNTY, TEXAS BY: ELLA HOLLINGSWORTH DEPUTY
 (ELLA HOLLINGSWORTH)