

Spacious 3 Bedroom Home

307 Clover Drive Indianola, MS 38751



\$99,500

Spacious three-bedroom, two-bath home offering approximately 1,637 sq/ft on a generous 1.3-acre city lot. Built in 1962, this property presents a fantastic investment or renovation opportunity. Home needs significant work, but the potential is undeniable. Highly encourage ANY and ALL offers! Call Emerson today for your private showing.

Directions from the intersection of Hwy 49 and Hwy 82 in Indianola, MS: Travel West on Hwy 82 for approximately 0.7 miles, turn right onto N. Sunflower Ave. In 0.3 Miles turn left onto Clover Drive and in 427 feet the house will be on the right. [Click for Google Maps.](#)



**EMERSON
LOVELACE**
REALTOR®

Office: 662.441.2500
Cell: 601.715.3302

Emerson@TomSmithLand.com



Expect More. Get More.

**A Real Estate Expert
You Can Trust!**





**EMERSON
LOVELACE**
REALTOR®

Office: 662.441.2500
Cell: 601.715.3302

Emerson@TomSmithLand.com

**Tom
Smith**
**LAND AND
HOMES**
Expect More. Get More.



**EMERSON
LOVELACE**
REALTOR®

Office: 662.441.2500

Cell: 601.715.3302

Emerson@TomSmithLand.com



Expect More. Get More.

Aerial Map



[Click for Interactive Map](#)

**EMERSON
LOVELACE**
REALTOR®

Office: 662.441.2500

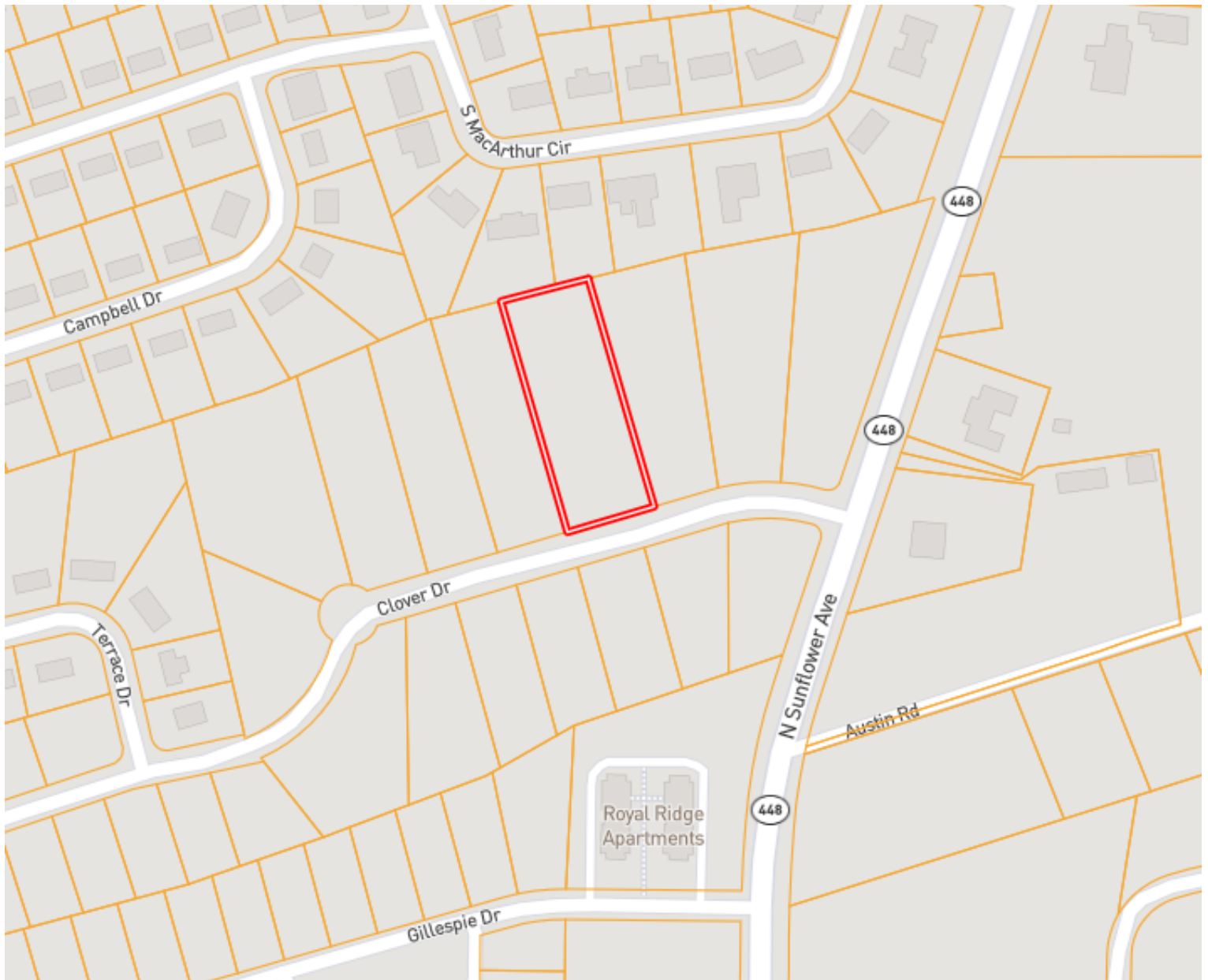
Cell: 601.715.3302

Emerson@TomSmithLand.com



Expect More. Get More.

Ownership Map



**EMERSON
LOVELACE**

REALTOR®

Office: 662.441.2500

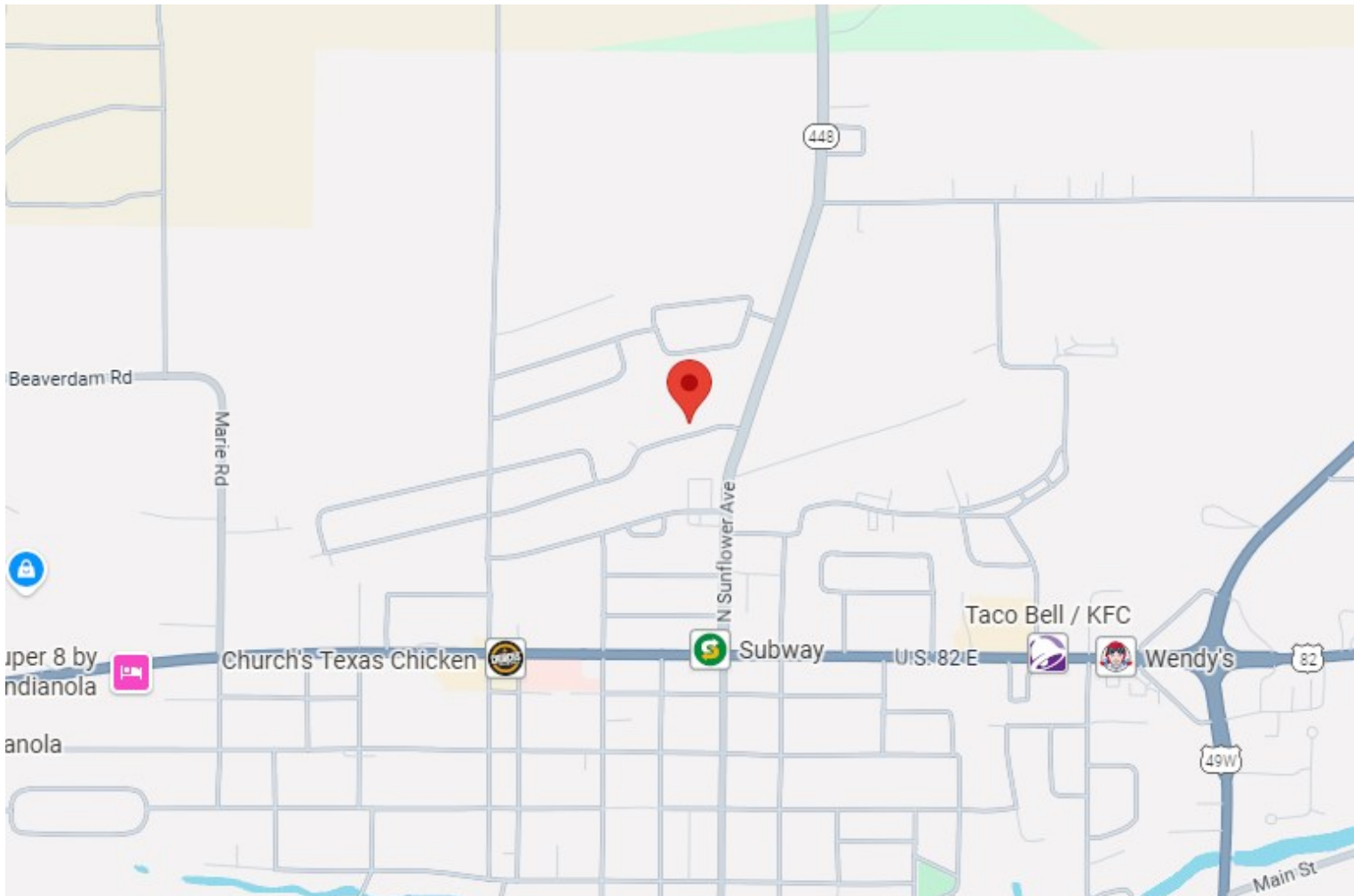
Cell: 601.715.3302

Emerson@TomSmithLand.com



Expect More. Get More.

Directional Map



Address: 307 Clover Drive Indianola, MS 38751

Directions from the intersection of Hwy 49 and Hwy 82 in Indianola, MS: Travel West on Hwy 82 for approximately 0.7 miles, turn right onto N. Sunflower Ave. In 0.3 Miles turn left onto Clover Drive and in 427 feet the house will be on the right. [Click for Google Maps.](#)

**EMERSON
LOVELACE**
REALTOR®

**Office: 662.441.2500
Cell: 601.715.3302**

Emerson@TomSmithLand.com



Expect More. Get More.